

Product datasheet for **RC223676**

PLEKHO2 (NM_025201) Human Tagged ORF Clone

Product data:

Product Type:	Expression Plasmids
Product Name:	PLEKHO2 (NM_025201) Human Tagged ORF Clone
Tag:	Myc-DDK
Symbol:	PLEKHO2
Synonyms:	PLEKHQ1; PP1628; pp9099
Mammalian Cell Selection:	Neomycin
Vector:	pCMV6-Entry (PS100001)
E. coli Selection:	Kanamycin (25 ug/mL)



[View online »](#)

ORF Nucleotide Sequence:

>RC223676 representing NM_025201
 Red=Cloning site Blue=ORF Green=Tags(s)

TTTTGTAATACGACTCACTATAGGGCGGCCGGAATTCGTCGACTGGATCCGGTACCGAGGAGATCTGCC
 GCC**CGGATCGCC**

ATGGAGGAGGAGGTGTGAAGGAAGCCGGTGAAGCCTCGGGGAGCACAGATGGTGGACAAGGCTGGCT
 GGATCAAGAAGAGCAGTGGGGCCCTCTGGGTTTCTGAAAGACCGATATCTGCTCCTCTGCCAGGCCCA
 GCTGCTGGTCTATGAGAATGAGGATGATCAGAAGTGTGTGGAGACTGTGGAGCTGGGCAGCTATGAGAAG
 TGCCAGGACCTTCGTGCCCTCTCAAGCGAAAACACCGCTTTATCCTGCTGCGATCCCCAGGGAACAAGG
 TCACGCACATCAAATCCAGGCACCCACCGGGGAGGAGAAGGAATCCTGGATCAAAGCCCTCAATGAAGG
 GATTAACCGAGGCAAAAACAAGGCTTTCGATGAGGTAAGGTGGACAAGAGCTGCGCCCTGGAGCATGTG
 ACACGGGACCGGGTGCAGGGGGCCAGCGACGCCGGCCACCAACGAGAGTCCACCTGAAGGAGGTGGCCA
 GTGCAGCTTCTGACGGTCTTCTGCGCTGGATCTTGATGTTCCGGACAGTGGGCCACCAGTGTGGCCCC
 CAGCAATCATGTCAGTGAAGCCCAACCTCGGGAGACACCCGGCCCTCATGCCCTCTACCAAGCCTTTC
 CTAGCACCTGAGACCACAGCCCTGGTGACAGGTGGAGACCCCTGTGGGGGAGAGAGCCCAACCCCTG
 TCTCAGCAAGCTCTGAGGTCTCCCTGAGAGCCAAGAGGACTCAGAGACCCAGCAGAGGAGGACAGTGG
 CTCTGAGCAGCCTCCCAACAGCGTCTGCTGACAAAAGTGAAGGTGAGCTGGGAGAACCCAGCCCCAG
 GAGGCCCTGCTGCAGAGAGTGCAGAACCGTCCCAGGCACCCCTGTTCTGAGACTTCTGAGGCTGCCCCCA
 GGGAGGTGGGAAGCCCCCTACACCCCAACCAAGATCTTATCAGAGAACTGAAAGCCTCCATGGGTGA
 GATGCAGGCTTCTGGGCCACCTGCTCCAGGCACAGTGCAGGTCTCAGTGAATGGCATGGATGACAGTCT
 GAGCCTGCCAAGCCCTCTCAGGCTGAGGGCACCCAGGAACCTCCTCAAAGGATGCAACAACATCCACAG
 CACTGCCCCCTGGGACCTGCCACCTCAGTTCATCCCCGCTGCTCCTCCCTTGGGGACTTGTCTGGGGA
 AGGCCCGCGGCATCCCTTGACAGCCAGGGAACGGCTATATCGGGCCAGCTGGAGGTGAAGGTGGCCTCG
 GAACAGACGAGAACTGTTGAACAAGGTGCTGGGCAAGTGGCCGCGCCCTGTTAGTGCCGAAACATTGC
 TCAGCCAGGCTGTGGAGCAGCTGAGGCAGGCCACCCAGGTCTGCAGGAAATGAGAGATTGGGAGAGCT
 GAGCCAGGAAGCACCTGGGCTAAGGGAGAAGCGGAAGGAGCTGGTGACCCCTACAGGAGAAGTGCACCC

ACGCGTACGCGGCCGCTCGAGCAGAACTCATCTCAGAAGAGGATCTGGCAGCAAATGATATCTGGATT
 ACAAGGATGACGACGATAAGGTTTAA

Protein Sequence:

>RC223676 representing NM_025201
 Red=Cloning site Green=Tags(s)

MEEEGVKEAGEKPRGAQMVDKAGWIKKSSGGLLGFWKDRYLLLCQAQLLVYENEDDQKCVETVELGSYEK
 CQDLRALLKRKHRFILLRSPGNKVS DIKFQAPTGEEKESWIKALNEGINRGKNKAFDEVKVDKSCALEHV
 TRDRVRGGQRRRPTRVHLKEVASAASDGLLRDLDPDPSGPPVFAFNSNHVSEAQPRTPRPLMPPTKPF
 LAPETTSFGDRVETPVGERAPTPVSASSEVSPESQEDSETPAEEDSGSEQPPNSVLPDKLKVSWENPSPQ
 EAPAAESAEPSQAPCSETSEAPREGGKPPTPPKILSEKLKASMGEMQASGPPAPGTVQVSYNGMDDSP
 EPAKPSQAEGTPTPKDATTSTALPPWDLPPQFHPRCSSLGDLLGEGPRHPLQPRERLYRAQLEVKVAS
 EQTEKLLNKVLGSEPAVSAETLLSQAVEQLRQATQVLQEMRDLGELSQEAPGLREKRKELVTLYRRSAP

TRTRPLEQKLI SEEDLAANDILDYKDDDDKV

Chromatograms:

https://cdn.origene.com/chromatograms/mk8046_f04.zip

Restriction Sites:

Sgfl-MluI

Cloning Scheme:


ACCN: NM_025201

ORF Size: 1470 bp

OTI Disclaimer: The molecular sequence of this clone aligns with the gene accession number as a point of reference only. However, individual transcript sequences of the same gene can differ through naturally occurring variations (e.g. polymorphisms), each with its own valid existence. This clone is substantially in agreement with the reference, but a complete review of all prevailing variants is recommended prior to use. [More info](#)

OTI Annotation: This clone was engineered to express the complete ORF with an expression tag. Expression varies depending on the nature of the gene.

Components: The ORF clone is ion-exchange column purified and shipped in a 2D barcoded Matrix tube containing 10ug of transfection-ready, dried plasmid DNA (reconstitute with 100 ul of water).

Reconstitution Method:

1. Centrifuge at 5,000xg for 5min.
2. Carefully open the tube and add 100ul of sterile water to dissolve the DNA.
3. Close the tube and incubate for 10 minutes at room temperature.
4. Briefly vortex the tube and then do a quick spin (less than 5000xg) to concentrate the liquid at the bottom.
5. Store the suspended plasmid at -20°C. The DNA is stable for at least one year from date of shipping when stored at -20°C.

RefSeq: [NM_025201.5](#)

RefSeq Size: 3675 bp

RefSeq ORF: 1473 bp

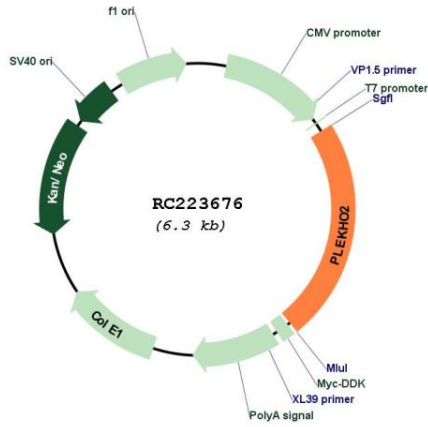
Locus ID: 80301

UniProt ID: [Q8TD55](#)

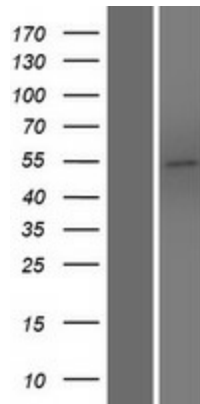
Cytogenetics: 15q22.31

Protein Families: Druggable Genome
Protein Pathways: Cytokine-cytokine receptor interaction
MW: 53.2 kDa

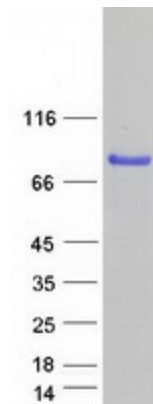
Product images:



Circular map for RC223676



Western blot validation of overexpression lysate (Cat# [LY410849]) using anti-DDK antibody (Cat# [TA50011-100]). Left: Cell lysates from untransfected HEK293T cells; Right: Cell lysates from HEK293T cells transfected with RC223676 using transfection reagent MegaTran 2.0 (Cat# [TT210002]).



Coomassie blue staining of purified PLEKHO2 protein (Cat# [TP323676]). The protein was produced from HEK293T cells transfected with PLEKHO2 cDNA clone (Cat# RC223676) using MegaTran 2.0 (Cat# [TT210002]).