

Product datasheet for **RC223396**

C9orf23 (RPP25L) (NM_148179) Human Tagged ORF Clone

Product data:

Product Type: Expression Plasmids
Product Name: C9orf23 (RPP25L) (NM_148179) Human Tagged ORF Clone
Tag: Myc-DDK
Symbol: C9orf23
Synonyms: bA296L22.5; C9orf23
Mammalian Cell Selection: Neomycin
Vector: pCMV6-Entry (PS100001)
E. coli Selection: Kanamycin (25 ug/mL)
ORF Nucleotide Sequence: >RC223396 ORF sequence
Red=Cloning site Blue=ORF Green=Tags(s)

TTTTGTAATACGACTCACTATAGGGCGGCCGGAATTCGTCGACTGGATCCGGTACCGAGGAGATCTGCC
GCC**CGATCGCC**

ATGGAGCACTACCGAAAGCTGGCTCTGTAGAGCTCCCAGCGCCTTCCCCAATGCCCCAGCTACCTCCTG
ATACCTTGAGATGCGGGTCCGAGATGGCAGCAAATTCGCAACCTGCTGGGGTTGGCTCCTGGTTCGGT
GGAGGGCGGCAGTCTCGGCATGTAGTGTCTCAGGTTCTGGCAGGGCTGCAGGAAAGGCTGTCAGCTGC
GCTGAGATTGTCAAGCGCGGGTCCAGGCCTGCACCAGCTCACCAAGCTACGTTTCCTTCAGACTGAGG
ACAGCTGGTCCCAGCCTCACCTGACACAGGGCTAGACCCCTCACAGTGCGCCCATGTGCCTGCAGT
GTGGGTGCTGCTCAGCCGGGACCCCTGGACCCCAATGAGTGTGGTTACCAACCCCGAGGAGACCCCT
GGCCTGGGTTCCATGCCAGCTCCAGCTGTGGCCCTCGTCCCGAAGAAGGGCTCGAGACACCCGATCG

ACGCGTACGCGGCCGCTCGAGCAGAACTCATCTCAGAAGAGGATCTGGCAGCAAATGATATCCTGGATT
ACAAGGATGACGACGATAAGGTTTAA

Protein Sequence: >RC223396 protein sequence
Red=Cloning site Green=Tags(s)

MEHYRKAGSVLPPSPMPQLPPDTLEMRVDRGSKIRNLLGLALGRLEGG SARHVVFSGSGRAAGKAVSC
AEIVKRRVPLHQLTKLRFQTEDSWVPASPDTGLDPLTVRRHVPVWVLLSRDPLDPNCEGYQPPGAPP
GLGMPSSSCGPRRARRDRTRS

TRTRPLEQKLISEEDLAANDILDYKDDDDKV

Chromatograms: https://cdn.origene.com/chromatograms/mk6427_g12.zip



[View online »](#)

Restriction Sites: SgfI-MluI

Cloning Scheme:



ACCN: NM_148179

ORF Size: 489 bp

OTI Disclaimer: The molecular sequence of this clone aligns with the gene accession number as a point of reference only. However, individual transcript sequences of the same gene can differ through naturally occurring variations (e.g. polymorphisms), each with its own valid existence. This clone is substantially in agreement with the reference, but a complete review of all prevailing variants is recommended prior to use. [More info](#)

OTI Annotation: This clone was engineered to express the complete ORF with an expression tag. Expression varies depending on the nature of the gene.

Components: The ORF clone is ion-exchange column purified and shipped in a 2D barcoded Matrix tube containing 10ug of transfection-ready, dried plasmid DNA (reconstitute with 100 ul of water).

Reconstitution Method:

1. Centrifuge at 5,000xg for 5min.
2. Carefully open the tube and add 100ul of sterile water to dissolve the DNA.
3. Close the tube and incubate for 10 minutes at room temperature.
4. Briefly vortex the tube and then do a quick spin (less than 5000xg) to concentrate the liquid at the bottom.
5. Store the suspended plasmid at -20°C. The DNA is stable for at least one year from date of shipping when stored at -20°C.

RefSeq: [NM_148179.3](#)

RefSeq Size: 1119 bp

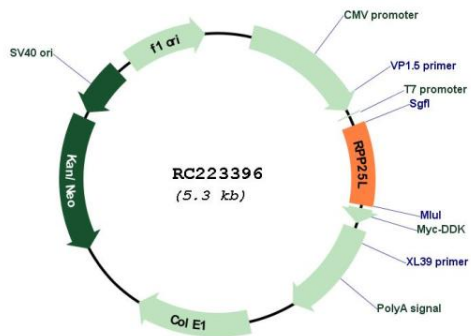
RefSeq ORF: 492 bp

Locus ID: 138716

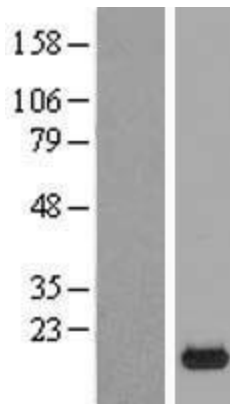
UniProt ID: [Q8N5L8](#)
 Cytogenetics: 9p13.3
 MW: 17.6 kDa

Gene Summary: This gene encodes a protein that appears to belong to a family of evolutionarily related proteins (DUF78), that may share one or more domains in common. Members of this family are small archaeobacterial proteins with no known function. Alternative splicing has been observed at this locus and two variants, both encoding the same protein, have been identified. [provided by RefSeq, Jul 2008]

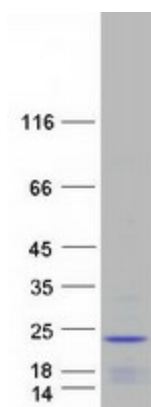
Product images:



Circular map for RC223396



Western blot validation of overexpression lysate (Cat# [LY407739]) using anti-DDK antibody (Cat# [TA50011-100]). Left: Cell lysates from untransfected HEK293T cells; Right: Cell lysates from HEK293T cells transfected with RC223396 using transfection reagent MegaTran 2.0 (Cat# [TT210002]).



Coomassie blue staining of purified RPP25L protein (Cat# [TP323396]). The protein was produced from HEK293T cells transfected with RPP25L cDNA clone (Cat# RC223396) using MegaTran 2.0 (Cat# [TT210002]).