

Product datasheet for **RC223262**

CD11c (ITGAX) (NM_000887) Human Tagged ORF Clone

Product data:

Product Type:	Expression Plasmids
Product Name:	CD11c (ITGAX) (NM_000887) Human Tagged ORF Clone
Tag:	Myc-DDK
Symbol:	CD11c
Synonyms:	CD11C; SLEB6
Mammalian Cell Selection:	Neomycin
Vector:	pCMV6-Entry (PS100001)
E. coli Selection:	Kanamycin (25 ug/mL)
ORF Nucleotide Sequence:	>RC223262 representing NM_000887 Red=Cloning site Blue=ORF Green=Tags(s)

TTTTGTAATACGACTCACTATAGGGCGCCGGGAATTCGTCGACTGGATCCGGTACCGAGGAGATCTGCC
GCC**CGATCGCC**

ATGACCAGGACCAGGGCAGCACTCCTCCTGTTCACAGCCTTAGCAACTTCTCTAGGTTTCAACTTGGACA
CAGAGGAGCTGACAGCCTTCCGTGTGGACAGCGTGGGTTTGGAGACAGCGTGGTCCAGTATGCCAACTC
CTGGGTGGTGGTGGAGCCCCAAAAGATAACAGCTGCCAACCAACGGGTGGCCTCTACCAGTGTGGC
TACAGCACTGGTGCCTGTGAGCCATCGGCTGCAGGTGCCCGGAGGCCGTGAACATGTCCTGGGCC
TGTCCCTGGCGTCTACCACCAGCCTTCCAGCTGCTGGCCTGCGGCCACCCTGCACCACGAGTCCGG
GAGGAACATGTACCTCACCGACTCTGCTTCTCCTGGGCCCCACCCAGCTCACCCAGAGGCTCCCGGTG
TCCAGGCAGGAGTGCCCAAGACAGGAGCAGGACATTGTGTTCTGATCGATGGCTCAGGCAGCATCTCT
CCCCTCACTTTGCCACGATGATGAACCTCGTGAGAGCTGTGATAAGCCAGTTCAGAGACCCAGCACCCA
GTTTTCCCTGATGCAGTTCTCCAACAAATCCAACACACTTCACTTTCGAGGAATTCAGGCGCAGCTCA
AACCCCTCAGCCTGTTGGCTTCTGTTCCACAGCTGCAAGGGTTTACATACAGGCCACCCGCATCCAAA
ATGTCGTGCACCGATTGTTCCATGCCTCATATGGGGCCGTAGGGATGCCGCCAAATTTCTATTGTCAT
CACTGATGGGAAGAAAGAAGGCGACAGCCTGGATTATAAGGATGTCATCCCCATGGCTGATGCAGCAGGC
ATCATCCGCTATGCAATTGGGGTTGGATTAGCTTTTCAAACAGAAATTTGAAAGAAATTAATGACA
TTGCATCGAAGCCCTCCAGGAACACATATTTAAAGTGGAGGACTTTGATGCTCTGAAAGATATTCAAAA
CCAAGTGAAGGAGAAGATCTTTGCCATTGAGGGTACGGAGACCACAAGCAGTAGCTCCTTGAATTGGAG
ATGGCACAGGAGGGCTTCAGCGCTGTGTTACACCTGATGGCCCCGTTCTGGGGCTGTGGGGAGCTTCA
CCTGGTCTGGAGGTGCCTTCTGTACCCCCAAATATGAGCCCTACCTTCATCAACATGTCTCAGGAGAA
TGTGGACATGAGGGACTTACCTGGGTTACTCCACCGAGCTGGCCCTCTGAAAGGGGTGCAGAGCCTG
GTCCTGGGGCCCCCGTACCAGCACACCGGGAAGGCTGTCATTTACCCAGGTGTCCAGGCAATGGA
GGATGAAGGCCGAAGTACGGGGACTCAGATCGGCTCCTACTTCGGGGCCTCCCTCTGCTCCGTGGACGT
AGACAGCGACGGCAGCACCGACCTGGTCTCATCGGGCCCCCATTACTACGAGCAGACCCGAGGGGGC



CAGGTGTCTGTGTGCCCTTGCCAGGGGGTGGAGAAGGTGGTGGTGTGATGCTGTTCTCTACGGGGAGC
AGGGCCACCCCTGGGGTGCCTTTGGGGCGGCTCTGACAGTGTGGGGATGTGAATGGGGACAAGCTGAC
AGACGTGGTCAATCGGGGCCCCAGGAGAGGAGGAGAACCGGGTGTCTACCTGTTTCACGGAGCTTG
GGACCCAGCATCAGCCCCCCCACAGCCAGCGGATCGCGGGTCCCAGCTCTCCTCCAGGCTGCAGTATT
TTGGGCAGGACTGAGCGGGGTCAAGACCTCACCCAGGATGACTGGTGGACCTGGCTGTGGGGCCCC
GGGCCAGGTGCTCCTGCTCAGGACCAGACCTGTGCTCTGGGTGGGGTGGAGTGCAGTTCATACCTGCC
GAGATCCCCAGGTGCTGCTTTGAGTGTCCGGAGCAGGTGGTCTCTGAGCAGACCTGGTACAGTCCAACA
TCTGCCTTACATTGACAAACGTTCTAAGAACCTGCTTGGGAGCCGTGACCTCCAAGCTCTGTGACCTT
GGACCTGGCCCTCGACCTGGCCGCTGAGTCCCCGTGCCACCTTCCAGGAAACAAGAACCAGGAGTCTG
AGCCGAGTCCGAGTCTCGGGTGAAGGCACACTGTGAAAACCTCAACCTGCTGCTCCCGAGCTGCGTGG
AGGACTCTGTGACCCCCATTACCTTGCCTGAACTTACGCTGGTGGGCAAGCCCTCCTTGCCTTCAG
AAACCTGCGCCATGCTGGCCGCGATGCTCAGAGATACTTACGCGCTCCCTACCTTTGAGAAGAAC
TGTGGAGCCGACCATATCTGCCAGGACAATCTCGGCATCTCCTCAGCTTCCAGGCTTGAAGTCCCTGC
TGGTGGGAGTAACCTGGAGCTGAACGCAGAAGTATGGTGTGGAATGACGGGAAAGACTCTACGGAAC
CACCATCACCTTCTCCACCCCGCAGGACTGTCTACCGTACGTGGCAGAGGGCCAGAAAACAGGGCAG
CTGCGTTCCTGCACCTGACATGTGACAGCGCCCCAGTTGGGAGCCAGGGCACCTGGAGCACCAGCTGCA
GAATCAACCACCTCATCTTCCGTGGCGGCGCCAGATCACCTTCTGGCTACCTTTGACGCTCCCCCAA
GGCTGTCTGGGAGACCGGCTGCTTCTGACAGCCAATGTGAGCAGTGAGAACAACACTCCCAGGACCAGC
AAGACCACCTTCCAGCTGGAGCTCCCGTGAAGTATGCTGTCTACACTGTGGTTAGCAGCCACGAACAAT
TCACCAAATACCTCAACTTCTCAGAGTCTGAGGAGAAGGAAAGCCATGTGGCCATGCACAGATACCAGT
CAATAACCTGGGACAGAGGGACCTGCCTGTCAGCATCACTTCTGGTGCCTGTGGAGCTGAACCAGGAG
GCTGTGTGGATGGATGTGGAGGTCTCCACCCCGCAGAACCCATCCCTTCCGTGCTCCTCAGAGAAAATCG
CACCCCGCAGCATCTGACTTCTGGCGCACATTGAGAAGAATCCCGTGTGGACTGCTCATTGCTGGTGC
CCTGCGGTTCCGCTGTGACGTCCCTCCTTCCAGGCTCCAGGAGGAGCTGGATTTACCTGAAGGGCAAC
CTCAGCTTTGGTGGTCCGCCAGATATTGAGAAGAAGGTGTCGGTCTGAGTGTGGCTGAAATTACGT
TCGACACATCCGTGACTCCAGCTTCCAGGACAGGAGGATTTATGAGAGCTCAGACGACAACGGTGTCT
GGAGAAGTACAAGGTCCACAACCCACCCCTCATCGTAGGCAGCTCCATTGGGGTCTGTTGCTGCTG
GCACTCATCAGCGGTACTGTACAAAGTTGGCTTCTTCAAGCGTCAGTACAAGGAAATGATGGAGGAGG
CAAATGGACAAATTGCCCGAAAACGGGACACAGACCCCGCCAGCCCGCCAGTGAGAAA

ACGCGTACGCGGCGGCTCGAGCAGAACTCATCTCAGAAGAGGATCTGGCAGCAAATGATATCCTGGATT
ACAAGGATGACGACGATAAGGTTTAA

Protein Sequence: >RC223262 representing NM_000887
 Red=Cloning site Green=Tags(s)

MTRTRAALLLFTALATSLGFNLDTEELTAFRVDSAGFGDSVVQYANSWVVVGAPQKITAANQTGGLYQCG
 YSTGACEPIGLQVPPEAVNMSLGLSLASTTSPSQLLACGPTVHHECGRNMVLTGLCFLLGPTQLTQRLPV
 SRQECPRQEQDIVFLIDGSGSISRNFATMMNFVRAVISQFQRPSTQFSLMQFSNKFQTHFTFEFRSS
 NPLSLLASVHQLQGFTYTATAIQNVVHRLFHASYGARRDAKILIVITDGKKEGDSLVDYKDVIPMADAAG
 IIRYAIQVGLAFQNRNSWKELNDIASKPSQEHIFKVEDFDALKDIONLKEKIFATEGTETTSSSFELE
 MAQEGFSAVFTPDGPVLGAVGSFTWGGAFLYPPNMSPTFINMSQENVDMRDSYLYSTELALWKGVSLSL
 VLGAPRYQHTGKAVIFTQVSRQWRMKAQVETGTQIGSYFGASLCSVDVSDGSDTLVIGAPHYYEQTRGG
 QVSVCPPLPRGWRWCDVLYGEQGHWPGRFGAALTVLGDVNGDKLTDVVIAGPGEENRGAVYLFHGV
 GPSISPSHSQRIAGSQLSSRLQYFGQALSGGQDLTQDGLVDLAVGARGQVLLLRTRPVLWVGVMQFIPA
 EIPRSFAFECREQVVEQTLVQSNICLYIDKRKNLLGSRDLQSSVTLDLALDPGRLSPRATFQETKNRSL
 SRVRVLGLKAHCENFNLLPSCVEDSVTPITLRLNFTLVGKPLLAFRNLRPMLAADAQRYFTASLPFEKN
 CGADHICQDNLGISFSFPGLKSLLVGSNLELNAEVMVWNDGEDSYGTTITFSHPAGLSYRYVAEQKQGG
 LRSLHLTCDSAPVGSQGTWSTSCRINHLIFRGGQITFLATFDVSPKAVLGDRLLLTANVSENNTPRTS
 KTTFQLELQVYVYTVVSSHEQFTKYLNFSESEEKESHVAMHRYQVNNLQGRDLVPSINFWVPVELNQE
 AVWMDVEVSHQPNSLRCSSEKIAPPASDFLAHIQKNPVLDCSIAGCLRFRCVPSFSVQEELDFTLKGN
 LSFQWVRQILQKKVSVVSAEITFDTSVYQLPGQEAQFMRQTTTLEKYKVNHPPLIVGSSIGLLLLL
 ALITAVLYKVGFFKRQYKEMMEEANGQIAPENGTQTPSPPEK

TRTRPLEQKLISEEDLAANDILDYKDDDDKV

Chromatograms: https://cdn.origene.com/chromatograms/mk8001_b05.zip

Restriction Sites: SgfI-MluI

Cloning Scheme:

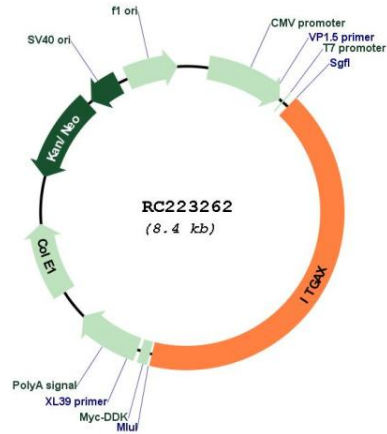


ACCN: NM_000887

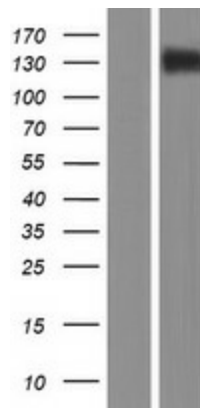
ORF Size: 3489 bp

OTI Disclaimer:	The molecular sequence of this clone aligns with the gene accession number as a point of reference only. However, individual transcript sequences of the same gene can differ through naturally occurring variations (e.g. polymorphisms), each with its own valid existence. This clone is substantially in agreement with the reference, but a complete review of all prevailing variants is recommended prior to use. More info
OTI Annotation:	This clone was engineered to express the complete ORF with an expression tag. Expression varies depending on the nature of the gene.
Components:	The ORF clone is ion-exchange column purified and shipped in a 2D barcoded Matrix tube containing 10ug of transfection-ready, dried plasmid DNA (reconstitute with 100 ul of water).
Reconstitution Method:	<ol style="list-style-type: none">1. Centrifuge at 5,000xg for 5min.2. Carefully open the tube and add 100ul of sterile water to dissolve the DNA.3. Close the tube and incubate for 10 minutes at room temperature.4. Briefly vortex the tube and then do a quick spin (less than 5000xg) to concentrate the liquid at the bottom.5. Store the suspended plasmid at -20°C. The DNA is stable for at least one year from date of shipping when stored at -20°C.
RefSeq:	NM_000887.5
RefSeq Size:	4666 bp
RefSeq ORF:	3492 bp
Locus ID:	3687
UniProt ID:	P20702
Cytogenetics:	16p11.2
Protein Families:	Druggable Genome, Transmembrane
Protein Pathways:	Regulation of actin cytoskeleton
MW:	127.83 kDa
Gene Summary:	This gene encodes the integrin alpha X chain protein. Integrins are heterodimeric integral membrane proteins composed of an alpha chain and a beta chain. This protein combines with the beta 2 chain (ITGB2) to form a leukocyte-specific integrin referred to as inactivated-C3b (iC3b) receptor 4 (CR4). The alpha X beta 2 complex seems to overlap the properties of the alpha M beta 2 integrin in the adherence of neutrophils and monocytes to stimulated endothelium cells, and in the phagocytosis of complement coated particles. Two transcript variants encoding different isoforms have been found for this gene. [provided by RefSeq, Nov 2013]

Product images:



Circular map for RC223262



Western blot validation of overexpression lysate (Cat# [LY424468]) using anti-DDK antibody (Cat# [TA50011-100]). Left: Cell lysates from untransfected HEK293T cells; Right: Cell lysates from HEK293T cells transfected with RC223262 using transfection reagent MegaTran 2.0 (Cat# [TT210002]).