

Product datasheet for RC223225

Thrombospondin 2 (THBS2) (NM_003247) Human Tagged ORF Clone

Product data:

| | |
|---------------------------|---|
| Product Type: | Expression Plasmids |
| Product Name: | Thrombospondin 2 (THBS2) (NM_003247) Human Tagged ORF Clone |
| Tag: | Myc-DDK |
| Symbol: | Thrombospondin 2 |
| Synonyms: | TSP2 |
| Mammalian Cell Selection: | Neomycin |
| Vector: | pCMV6-Entry (PS100001) |
| E. coli Selection: | Kanamycin (25 ug/mL) |
| ORF Nucleotide Sequence: | >RC223225 representing NM_003247 Red=Cloning site Blue=ORF Green=Tags(s) |

TTTTGTAATACGACTCACTATAGGGCGGCCGGAATTCGTCGACTGGATCCGGTACCGAGGAGATCTGCC
GCC**CGATCGCC**

ATGGTCTGGAGGCTGGTCTGCTGGCTCTGTGGGTGTGGCCAGCACGCAAGCTGGTCACCAGGACAAAG
ACACGACCTTCGACCTTTTCAGTATCAGCAACATCAACCGCAAGACCATTGGCGCCAAGCAGTTCGCGG
GCCCGACCCCGCGTGCCGGCTTACCGCTTCGTGCGCTTTGACTACATCCACCGGTGAACGAGATGAC
CTCAGCAAGATCACCAAGATCATGCGGCAGAAGGAGGGCTTCTTCTCACGGCCAGCTCAAGCAGGACG
GCAAGTCCAGGGCAGCTGTTGGCTCTGGAGGGCCCGTCTCTCCAGAGGCAGTTCGAGATCGTCTC
CAACGGCCCCGCGGACACGCTGGATCTACCTACTGGATTGACGGCACCCGGCATGTGGTCTCCCTGGAG
GACGTCGGCCTGGCTGACTCGCAGTGGAAGAAGCTCACCGTGCAGGTGGCTGGCGAGACCTACAGCTTGC
ACGTGGGCTGCGACCTCATAGACAGCTTCGCTCTGGACGAGCCCTTCTACGAGCACCTGCAGGCGGAAAA
GAGCCGGATGTACGTGGCCAAAGGCTCTGCCAGAGAGAGTCACTTCAGGGGTTTGCTTCAGAACGTCCAC
CTAGTGTTTGAAAACCTGTGGAAGATATTCTAAGCAAGAAGGGTTGCCAGCAAGGCCAGGGAGCTGAGA
TCAACGCCATCAGTGAGAACACAGAGACGCTGCGCCTGGTCCGCATGTCACCACCGAGTACGTGGGCC
CAGCTCGGAGAGGAGGCCGAGGTGTGCGAACGCTCGTGCGAGGAGCTGGGAAACATGGTCCAGGAGCTC
TCGGGGCTCCACGCTCTCGTGAACCAGCTCAGCGAGAACCTCAAGAGAGTGTGCAATGATAACCAAGTTTC
TCTGGGAGCTCATTGGTGGCCCTCCTAAGACAAGGAACATGTGAGCTTGCTGGCAGGATGGCCGGTTCTT
TGCGGAAAATGAAACGTGGGTGGTGACAGCTGCACCACGTGTACCTGCAAGAAATTTAAAAACATTTGC
CACCAAATCACCTGCCCGCTGCAACCTGCGCCAGTCCATCCTTTGTGGAAGGCGAATGCTGCCCTTCT
GCCTCCACTCGGTGGACGGTGAGGAGGGCTGGTCTCCGTGGCAGAGTGGACCCAGTGTCTCGTGACGTG
TGGCTCTGGGACCCAGCAGAGAGGCCGGTCTGTGACGTACCAGCAACACCTGCTTGGGGCCCTCCATC
CAGACACGGGCTTGACGTCTGAGCAAGTGTGACACCCGCATCCGGCAGGACGGCGCTGGAGCCACTGGT
CACCTTGGTCTTCATGCTCTGTGACCTGTGGAGTTGGCAATATCACACGCATCCGTCTCTGCAACTCCCC
AGTGCCCCAGATGGGGGCAAGAATTGCAAAGGGAGTGGCCGGGAGACCAAGCCTGCCAGGGCGCCCA



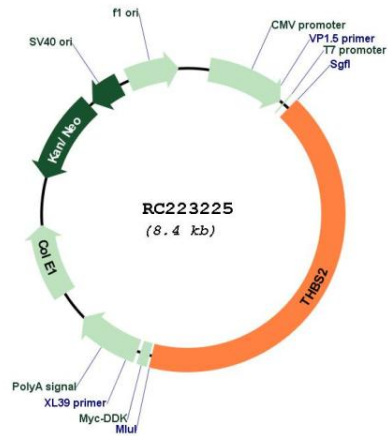
[View online »](#)

TGCCAATCGATGGCCGCTGGAGCCCCTGGTCCCCGTGGTCGGCCTGCACTGTCACCTGTGCCGGTGGGA
TCCGGGAGCGCACCCGGGTCTGCAACAGCCCTGAGCCTCAGTACGGAGGGAAGGCCCTGCGTGGGGATGT
GCAGGAGCGTCAGATGTGCAACAAGAGGAGCTGCCCGTGGATGGCTGTTTATCCAACCCCTGCTCCCC
GGAGCCCAGTGCAGCAGCTTCCCGATGGTCTGGTTCATGCGGCTCCTGCCCTGTGGGCTTCTGGGCA
ATGGCACCCACTGTGAGGACCTGGACGAGTGTGCCCTGGTCCCGACATCTGCTTCTCCACCAGCAAGGT
GCCTCGCTGTGTCAACACTCAGCCTGGCTTCCACTGCCCTGCCCTGCCCGCCCGATACAGAGGGAACCG
CCCGTCGGGGTCCGCTGGAAGCAGCCAAGACGGAAAAGCAAGTGTGTGAGCCCGAAAACCCATGCAAGG
ACAAGACACACAAGTCCACAAGCACGCGGAGTGCATCTACCTGGGCCACTTCAGCGACCCCATGTACAA
GTGCGAGTGCCAGACAGGCTACGCGGGCAGCGGCTCATCTGCGGGGAGGACTCGGACCTGGACGGCTGG
CCCAACCTCAATCTGGTCTGCGCCACCAACGCCACCTACCACTGCATCAAGGATAACTGCCCCATCTGC
CAAATTCTGGGCAGGAAGACTTTGACAAGGACGGGATTGGCGATGCCTGTGATGATGACGATGACAAATGA
CGGTGTGACCGATGAGAAGGACAAGTCCAGCTCCTTCAATCCCGCCAGGCTGACTATGACAAGGAT
GAGGTTGGGGACCGCTGTGACAAGTCCCTTACGTGCACAACCTGCCAGATCGACACAGACAACAATG
GAGAGGTTGACGCTGCTCCGTGGACATTGATGGGACGATGTCTTCAATGAACGAGACAATTGTCCCTA
CGTCTACAACACTGACCAGAGGGACACGGATGGTACGGTGTGGGGGATCACTGTGACAAGTCCCGCTG
GTGCACAACCTGACCAGACCGAGTGGACAATGACCTTGTGGGGACCGTGTGACAACACGAGGACA
TAGATGACGACGGCCACCAGAACAACAGGACAAGTCCCTACATCTCCAACGCCAACAGGCTGACCA
TGACAGAGACGGCCAGGGCGACGCTGTGACCCTGATGATGACAACGATGGCGTCCCGATGACAGGGAC
AACTGCCGGCTTGTGTTCAACCCAGACCAGGAGGACTTGGACGGTGTGACGGGGTGTATTTGTAAG
ATGATTTTGACAATGACAACATCCAGATATTGATGATGTGTGCTGAAACAATGCCATCAGTGAGAC
AGACTTCAGGAATTCAGATGGTCCCCTGGATCCCAAAGGGACCACCAAAATGATCCCAACTGGGTC
ATTCGCCATCAAGGCAAGGAGCTGGTTCAGACAGCCAACCTCGGACCCCGCATCGCTGTAGGTTTTGACG
AGTTTGGTCTGTGGACTTCAGTGGCATTCTACGTAACACTGACCGGGACGACGACTATGCCGGCTT
CGTCTTTGGTTACCAGTCAAGCAGCCGCTTCTATGTGGTGTGGAAGCAGGTGACGCAGACCTACTGG
GAGGACCAGCCCACGCGGCCTATGGCTACTCCGGCGTGTCCCTCAAGGTGGTGAACCTCCACCACGGGGA
CGGGCAGCACCTGAGGAACGCGCTGTGGCACACGGGAAACGCGCGGGCAGGTGCGAACCTTATGGCA
CGACCCAGGAACATTGGCTGGAAGGACTACACGGCCTATAGGTGGCACCTGACTCACAGGCCAAAGACT
GGCTACATCAGAGTCTTAGTGATGAAGGAAAACAGGTGATGGCAGACTCAGGACCTATCTATGACAAA
CCTACGCTGGCGGGCGGCTGGTCTATTTGTCTTCTCAAGAAATGGTCTATTTCTCAGACCTCAAGTA
CGAATGCAGAGATATT

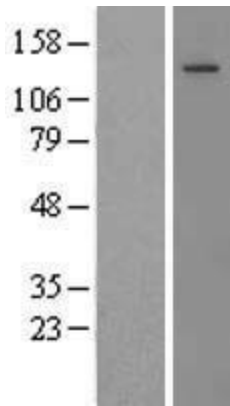
ACGCGTACGCGGCCGCTCGAGCAGAAACTCATCTCAGAAGAGGATCTGGCAGCAAATGATATCCTGGATT
ACAAGGATGACGACGATAAGGTTTAA

| | |
|-------------------------------|---|
| OTI Disclaimer: | The molecular sequence of this clone aligns with the gene accession number as a point of reference only. However, individual transcript sequences of the same gene can differ through naturally occurring variations (e.g. polymorphisms), each with its own valid existence. This clone is substantially in agreement with the reference, but a complete review of all prevailing variants is recommended prior to use. More info |
| OTI Annotation: | This clone was engineered to express the complete ORF with an expression tag. Expression varies depending on the nature of the gene. |
| Components: | The ORF clone is ion-exchange column purified and shipped in a 2D barcoded Matrix tube containing 10ug of transfection-ready, dried plasmid DNA (reconstitute with 100 ul of water). |
| Reconstitution Method: | <ol style="list-style-type: none">1. Centrifuge at 5,000xg for 5min.2. Carefully open the tube and add 100ul of sterile water to dissolve the DNA.3. Close the tube and incubate for 10 minutes at room temperature.4. Briefly vortex the tube and then do a quick spin (less than 5000xg) to concentrate the liquid at the bottom.5. Store the suspended plasmid at -20°C. The DNA is stable for at least one year from date of shipping when stored at -20°C. |
| RefSeq: | NM_003247.5 |
| RefSeq Size: | 5826 bp |
| RefSeq ORF: | 3519 bp |
| Locus ID: | 7058 |
| UniProt ID: | P35442 |
| Cytogenetics: | 6q27 |
| Domains: | tsp_1, VWC, EGF_CA, TSPN, tsp_3, EGF, EGF |
| Protein Families: | Druggable Genome |
| Protein Pathways: | ECM-receptor interaction, Focal adhesion, TGF-beta signaling pathway |
| MW: | 129.99 kDa |
| Gene Summary: | The protein encoded by this gene belongs to the thrombospondin family. It is a disulfide-linked homotrimeric glycoprotein that mediates cell-to-cell and cell-to-matrix interactions. This protein has been shown to function as a potent inhibitor of tumor growth and angiogenesis. Studies of the mouse counterpart suggest that this protein may modulate the cell surface properties of mesenchymal cells and be involved in cell adhesion and migration. [provided by RefSeq, Jul 2008] |

Product images:



Circular map for RC223225



Western blot validation of overexpression lysate (Cat# [LY418810]) using anti-DDK antibody (Cat# [TA50011-100]). Left: Cell lysates from untransfected HEK293T cells; Right: Cell lysates from HEK293T cells transfected with RC223225 using transfection reagent MegaTran 2.0 (Cat# [TT210002]).