

## Product datasheet for **RC223216**

### MBNL1 (NM\_207296) Human Tagged ORF Clone

#### Product data:

Product Type:	Expression Plasmids
Product Name:	MBNL1 (NM_207296) Human Tagged ORF Clone
Tag:	Myc-DDK
Symbol:	MBNL1
Synonyms:	EXP; MBNL
Mammalian Cell Selection:	Neomycin
Vector:	pCMV6-Entry (PS100001)
E. coli Selection:	Kanamycin (25 ug/mL)
ORF Nucleotide Sequence:	>RC223216 representing NM_207296 Red=Cloning site Blue=ORF Green=Tags(s)

TTTTGTAATACGACTCACTATAGGGCGGCCGGAATTCGTCGACTGGATCCGGTACCGAGGAGATCTGCC  
GCC**CGATCGCC**

ATGGCTGTTAGTGTACACCAATTCGGGACACAAAATGGCTAACACTGGAAGTATGTAGAGAGTTCCAGA  
GGGGGACTTGCTCACGGCCAGACACGGAATGTAATTTGCACATCCTTCGAAAAGCTGCCAAGTTGAAAA  
TGGACGAGTAATCGCCTGCTTTGATTTCATTGAAAGGCCGTTGCTCCAGGGAGAAGTCAAATATCTTCAT  
CCACCCCCACATTTAAAAACGCAGTTGGAGATAAATGGACGCAATAACTTGATTCAGCAGAAGAATCGG  
CCATGTTGGCCCAGCAAATGCAACTAGCCAATGCCATGATGCCTGGTGCCTTACAACCCGTGCCAAT  
GTTTTTCAGTTGCACCAAGCTTAGCCACCAATGCATCAGCAGCCGCTTTAATCCCTATCTGGGACCTGTT  
TCTCCAAGCCTGGTCCCAGCAGAGATCTTGCCGACTGCACCAATGTTGGTTACAGGGAATCCGGGTGCC  
CTGTACCTGCAGCTGCTGCAGCTGCTGCACAGAAATTAATGCGAACAGACAGACTTGAGGTATGTCGAGA  
GTACCAACGTGGCAATTGCAACCGAGGAGAAAAATGATTGTCGGTTTGCTCATCTGCTGCAGCACAATG  
ATTGACACCAATGACAACACAGTCACTGTGTATGGATTACATCAAAGGGAGATGCTCTCGGAAAAAGT  
GCAAATACTTTTCATCCCCCTGCACATTTGCAAGCCAAGATCAAGGCTGCCAATACCAGGTCAACCCAGGC  
TGCAGCTGCACAGGCTGCAGCCACCGCAGCTGCCATGTTCCCATGGTGCACGGTGTACGCCAGCCACTG  
TGTCGGCAGCAACAACATCTGCCACAAGTGTCCCTTCGCTGCAACAGCCACAGCCAACCCAGCCCATCC  
TTGATGCTTCTACACTGTTGGGTGCAACATCCTGTCTGAGCAGCAGGAAAAATGATACCCATAATATC  
TGCCGAACATCTGACTAGCCACAAGTATGTTACCCAGATG

**ACGCGT**ACGCGGCCGCTCGAGCAGAACTCATCTCAGAAGAGGATCTGGCAGCAAATGATATCCTGGATT  
ACAAGGATGACGACGATAAGGTTTAA



[View online »](#)

**Protein Sequence:** >RC223216 representing NM\_207296  
Red=Cloning site Green=Tags(s)

MAVSVTPIRDTKWL TLEVCREFQRTGCSRPDTECKFAHPSKSCQVENGRVIACFDSLKGRCSENCKYLH  
 PPPHLKTQLEINGRNNLIQQKNMAMLAQQMQLANAMMPGAPLQPVPMF SVAPSLATNASAAAFNPYLGPV  
 SPSLVPAEILPTAPMLVTGNPGVPVPAAAAAAQQKLMRTDRLEVCREYQQRGNCNRGENDCRFAHPADSTM  
 IDTNDNTVTVCMDYIKGRCSREKCKYFHPPAHLQAKIKAAQYQVNQAAAAQAAATAAAMFPWCTVLRQPL  
 CPQQHL PQVFP SLQQPQPTSPILDASTLLGATSCPAAAGKMIPIISAHLTSHKYVTQM

TRTRPLEQKLISEEDLAANDILDYKDDDDKV

**Chromatograms:** [https://cdn.origene.com/chromatograms/mg3885\\_g01.zip](https://cdn.origene.com/chromatograms/mg3885_g01.zip)

**Restriction Sites:** SgfI-MluI

**Cloning Scheme:**



**ACCN:** NM\_207296

**ORF Size:** 1020 bp

**OTI Disclaimer:** The molecular sequence of this clone aligns with the gene accession number as a point of reference only. However, individual transcript sequences of the same gene can differ through naturally occurring variations (e.g. polymorphisms), each with its own valid existence. This clone is substantially in agreement with the reference, but a complete review of all prevailing variants is recommended prior to use. [More info](#)

**OTI Annotation:** This clone was engineered to express the complete ORF with an expression tag. Expression varies depending on the nature of the gene.

**Components:** The ORF clone is ion-exchange column purified and shipped in a 2D barcoded Matrix tube containing 10ug of transfection-ready, dried plasmid DNA (reconstitute with 100 ul of water).

**Reconstitution Method:**

1. Centrifuge at 5,000xg for 5min.
2. Carefully open the tube and add 100ul of sterile water to dissolve the DNA.
3. Close the tube and incubate for 10 minutes at room temperature.
4. Briefly vortex the tube and then do a quick spin (less than 5000xg) to concentrate the liquid at the bottom.
5. Store the suspended plasmid at -20°C. The DNA is stable for at least one year from date of shipping when stored at -20°C.

**RefSeq:** [NM\\_207296.2](#)

**RefSeq Size:** 5246 bp

**RefSeq ORF:** 1023 bp

**Locus ID:** 4154

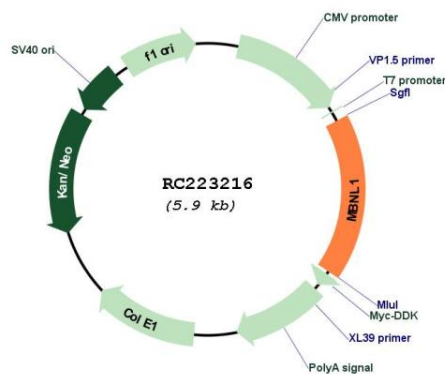
**UniProt ID:** [Q9NR56](#)

**Cytogenetics:** 3q25.1-q25.2

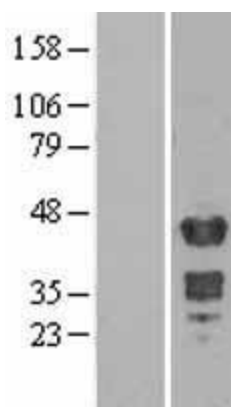
**MW:** 36.8 kDa

**Gene Summary:** This gene encodes a member of the muscleblind protein family which was initially described in *Drosophila melanogaster*. The encoded protein is a C3H-type zinc finger protein that modulates alternative splicing of pre-mRNAs. Muscleblind proteins bind specifically to expanded dsCUG RNA but not to normal size CUG repeats and may thereby play a role in the pathophysiology of myotonic dystrophy. Mice lacking this gene exhibited muscle abnormalities and cataracts. Several alternatively spliced transcript variants have been described but the full-length natures of only some have been determined. The different isoforms are thought to have different binding specificities and/or splicing activities. [provided by RefSeq, Sep 2015]

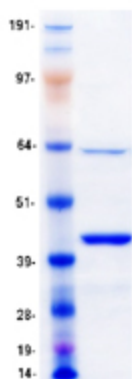
### Product images:



Circular map for RC223216



Western blot validation of overexpression lysate (Cat# [LY404079]) using anti-DDK antibody (Cat# [TA50011-100]). Left: Cell lysates from untransfected HEK293T cells; Right: Cell lysates from HEK293T cells transfected with RC223216 using transfection reagent MegaTran 2.0 (Cat# [TT210002]).



Coomassie blue staining of purified MBNL1 protein (Cat# [TP323216]). The protein was produced from HEK293T cells transfected with MBNL1 cDNA clone (Cat# RC223216) using MegaTran 2.0 (Cat# [TT210002]).