

Product datasheet for RC222455

Myelin oligodendrocyte glycoprotein (MOG) (NM_206809) Human Tagged ORF Clone

Product data:

Product Type:	Expression Plasmids
Product Name:	Myelin oligodendrocyte glycoprotein (MOG) (NM_206809) Human Tagged ORF Clone
Tag:	Myc-DDK
Symbol:	Myelin oligodendrocyte glycoprotein
Synonyms:	BTN6; BTNL11; MOGIG2; NRCLP7
Mammalian Cell Selection:	Neomycin
Vector:	pCMV6-Entry (PS100001)
E. coli Selection:	Kanamycin (25 ug/mL)
ORF Nucleotide Sequence:	>RC222455 representing NM_206809 Red=Cloning site Blue=ORF Green=Tags(s)

TTTTGTAATACGACTCACTATAGGGCGGCCGGAATTCGTCGACTGGATCCGGTACCGAGGAGATCTGCC
GCC**CGATCGCC**

ATGGCAAGCTTATCAAGACCCTCTGCCAGCTGCCTCTGCTCCTTCTCCTCCTCCTCCTCCAAG
TGTCTTCCAGCTATGCAGGGCAGTTCAGAGTGATAGGACCAAGACACCCTATCCGGGCTCTGGTCGGGA
TGAAGTGAATTGCCATGTCGATATCTCTGGGAAGAAGCTACAGGCATGGAGGTGGGTGGTACCGC
CCCCCTTCTCTAGGGTGGTTCATCTCTACAGAAATGGCAAGGACCAAGATGGAGACCAGGCACCTGAAT
ATCGGGGCCGGACAGAGCTGCTGAAAGATGCTATTGGTGAGGAAAGGTGACTCTCAGGATCCGGAATGT
AAGTTTCTCAGATGAAGGAGTTTACCTGCTTCTCCGAGATCATTCTTACCAAGAGGAGGCAGCAATG
GAATTGAAAGTAGAAGATCCTTTCTACTGGGTGAGCCCTGGAGTCTGTTCTCCTCGCGGTGCTGCCTG
TGCTCCTCCTGCAGATCACTGTTGGCCTCATCTTCTCTGCTGAGTACAGACTGAGAGGAAAACCTTCG
AGCAGAGATAGAGAATCTCCACCGGACTTTTGTACCCACTTTCTGAGGGTGCCCTGCTGGAAGATAACC
CTGTTTGAATTGTGCCGGTCTTGGACCCTTGGTTGCCTTGATCATCTGCTACAACCTGGCTACATCGAA
GACTAGCAGGGCAATTCTTGAAGAGCTACGAAATCCCTTC

ACGCGTACGCGGCCGCTCGAGCAGAAACTCATCTCAGAAGAGGATCTGGCAGCAAATGATATCCTGGATT
ACAAGGATGACGACGATAAGGTTTAA



[View online »](#)

Reconstitution Method:

1. Centrifuge at 5,000xg for 5min.
2. Carefully open the tube and add 100ul of sterile water to dissolve the DNA.
3. Close the tube and incubate for 10 minutes at room temperature.
4. Briefly vortex the tube and then do a quick spin (less than 5000xg) to concentrate the liquid at the bottom.
5. Store the suspended plasmid at -20°C. The DNA is stable for at least one year from date of shipping when stored at -20°C.

RefSeq: [NM_206809.4](#)

RefSeq Size: 2119 bp

RefSeq ORF: 744 bp

Locus ID: 4340

UniProt ID: [Q16653](#)

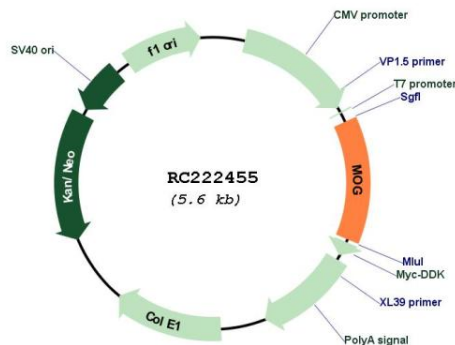
Cytogenetics: 6p22.1

Protein Families: Transmembrane

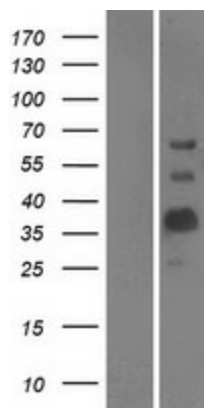
MW: 25.1 kDa

Gene Summary: The product of this gene is a membrane protein expressed on the oligodendrocyte cell surface and the outermost surface of myelin sheaths. Due to this localization, it is a primary target antigen involved in immune-mediated demyelination. This protein may be involved in completion and maintenance of the myelin sheath and in cell-cell communication. Alternatively spliced transcript variants encoding different isoforms have been identified. [provided by RefSeq, Jul 2008]

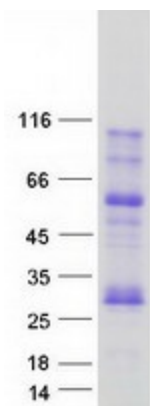
Product images:



Circular map for RC222455



Western blot validation of overexpression lysate (Cat# [LY404218]) using anti-DDK antibody (Cat# [TA50011-100]). Left: Cell lysates from untransfected HEK293T cells; Right: Cell lysates from HEK293T cells transfected with RC222455 using transfection reagent MegaTran 2.0 (Cat# [TT210002]).



Coomassie blue staining of purified MOG protein (Cat# [TP322455]). The protein was produced from HEK293T cells transfected with MOG cDNA clone (Cat# RC222455) using MegaTran 2.0 (Cat# [TT210002]).