

Product datasheet for RC222362

HTRA1 (NM_002775) Human Tagged ORF Clone

Product data:

Product Type:	Expression Plasmids
Product Name:	HTRA1 (NM_002775) Human Tagged ORF Clone
Tag:	Myc-DDK
Symbol:	HTRA1
Synonyms:	ARMD7; CADASIL2; CARASIL; HtrA; L56; ORF480; PRSS11
Mammalian Cell Selection:	Neomycin
Vector:	pCMV6-Entry (PS100001)
E. coli Selection:	Kanamycin (25 ug/mL)
ORF Nucleotide Sequence:	>RC222362 representing NM_002775. Blue=ORF Red=Cloning site Green=Tag(s)

GCGATCGCC
 ATGCAGATCCCGCGCGCCGCTCTTCTCCCGCTGCTGCTGCTGCTGCTGGCGGCGCCGCCTCGGCGCAG
 CTGTCCCGGGCCGGCCGCTCGGCGCCTTTGGTGCCGGTTGCCAGACCGCTGCGAGCCGGCGCGCTGC
 CCGCCGACGCGGAGCACTGCGAGGGCGGCGGGCCGGGACGCGTGCGGCTGCTGCGAGGTGTGCGGC
 GCGCCCGAGGGCGCCGCTGCGGCTGCAGGAGGGCCCGTGCGGCGAGGGGCTGCAGTGCCTGGTCC
 TTCGGGGTGCCAGCCTCGGCCACGGTGCGGCGGCGCGCAGGCCGGCCTCTGTGTGTGCCAGCAGC
 GAGCCGGTGTGCGGCAGCGACGCCAACACCTACGCCAACCTGTGCCAGCTGCGCGCCGCCAGCCCGC
 TCCGAGAGGCTGCACCGCCGCGGTTCATCGTCTGCAGCGCGGAGCCTGCGGCCAAGGGCAGGAAGAT
 CCCAACAGTTTGCGCCATAAATAAATTTATCGCGGACGTGGTGGAGAAGATCGCCCTGCCGTGGTT
 CATATCGAATTGTTTCGCAAGCTTCCGTTTTCTAAACGAGAGGTGCCGGTGGCTAGTGGGTCTGGTTTT
 ATTGTGTGCGAAGATGGACTGATCGTGACAAAATGCCACGTGGTACCAACAAGCACCGGGTCAAAGTT
 GAGCTGAAGAACGGTGCCACTTACGAAGCCAAAATCAAGGATGTGGATGAGAAAGCAGACATCGCACTC
 ATCAAAATTGACCACCAGGGCAAGCTGCCTGTCTGTGCTTGGCCGCTCCTCAGAGTGCGGCCGGGA
 GAGTTCGTGGTGCATCGAAGCCCGTTTTCCCTTCAAACACAGTACCACCGGGATCGTGAGCACC
 ACCCAGCGAGGCGCAAGAGCTGGGGCTCCGCAACTCAGACATGGACTACATCCAGACCGACGCCATC
 ATCAACTATGAAACTCGGGAGGCCGTTAGTAAACCTGGACGGTGAAGTATTGAATTAACACTTTG
 AAAGTGACAGCTGGAATCTCCTTTGCAATCCCATCTGATAAGATTAAGAAAGTTCCCTCAGGAGTCCCAT
 GACCGACAGGCCAAAGGAAAAGCCATCACCAAGAAGAAGTATATTGGTATCCGAATGATGCACTCAG
 TCCAGCAAAGCCAAAGAGCTGAAGGACCGGCACCGGGACTTCCAGACGTGATCTCAGGAGCGTATATA
 ATTGAAGTAATTCCTGATACCCAGCAGAAGCTGGTGGTCTCAAGGAAAACGACGTATAATCAGCATC
 AATGGACAGTCCGTGGTCTCCGCAATGATGTCAGCGACGTCATTAAGGGAAAGCACCCTGAACATG
 GTGGTCCGAGGGTAATGAAGATATCATGATCACAGTGATCCCGAAGAAATTGACCCA



[View online »](#)

Protein Sequence: >Peptide sequence encoded by RC222362
 Blue=ORF Red=Cloning site Green=Tag(s)

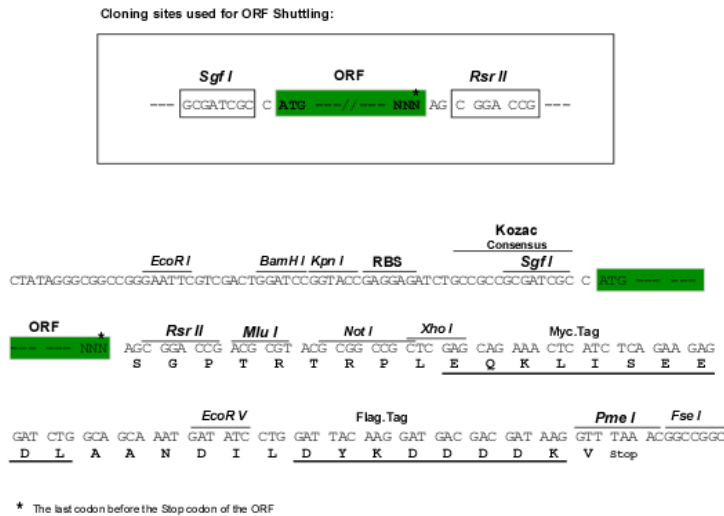
MQIPRAALLPLLLLLLAAPASAQLSRAGRSAPLAAGCPDRCEPARCPPQPEHCEGGRARDACGCCEVCG
 APEGAACGLQEGPCGEGLCQVVPFGVPASATVRRRAQAGLCVCASSEPVCGSDANTYANLCQLRAASRR
 SERLHRPPVIVLQRGACGQGEDPNLRHKYNF IADVVEKIAPAVVHIELFRKLPFSKREVPVAGSGGF
 IVSEDLIVTNAHVVTNKHRVKVELKNGATYEAKIKDVDEKADIALIKIDHQGKLPVLLLRSSSELRPG
 EFVVAIGSPFLQNTVTTGIVSTTQRGGKELGLRNSMDYIQTDAIINYGNSSGGLVNL DGEVIGINTL
 KYTAGISFAIPSDKIKKFLTESHDRQAKGKAITKKYIGIRMSLTSSKAKELKDRHRDFPDVISGAYI
 IEVIPDTPAEAGGLKENDVIISINGQSVSANDVSDVIKRESTLNMVRRGNEDIMITVIPEEIDP

Recombinant protein using RC222362 also available, [TP322362](#)

Chromatograms: https://cdn.origene.com/chromatograms/mk6190_d12.zip

Restriction Sites: SgfI-RsrII

Cloning Scheme:



ACCN: NM_002775

ORF Size: 1440 bp

OTI Disclaimer: The molecular sequence of this clone aligns with the gene accession number as a point of reference only. However, individual transcript sequences of the same gene can differ through naturally occurring variations (e.g. polymorphisms), each with its own valid existence. This clone is substantially in agreement with the reference, but a complete review of all prevailing variants is recommended prior to use. [More info](#)

OTI Annotation: This clone was engineered to express the complete ORF with an expression tag. Expression varies depending on the nature of the gene.

Components: The ORF clone is ion-exchange column purified and shipped in a 2D barcoded Matrix tube containing 10ug of transfection-ready, dried plasmid DNA (reconstitute with 100 ul of water).

Reconstitution Method:

1. Centrifuge at 5,000xg for 5min.
2. Carefully open the tube and add 100ul of sterile water to dissolve the DNA.
3. Close the tube and incubate for 10 minutes at room temperature.
4. Briefly vortex the tube and then do a quick spin (less than 5000xg) to concentrate the liquid at the bottom.
5. Store the suspended plasmid at -20°C. The DNA is stable for at least one year from date of shipping when stored at -20°C.

RefSeq Size: 2133 bp

RefSeq ORF: 1443 bp

Locus ID: 5654

UniProt ID: [Q92743](#)

Cytogenetics: 10q26.13

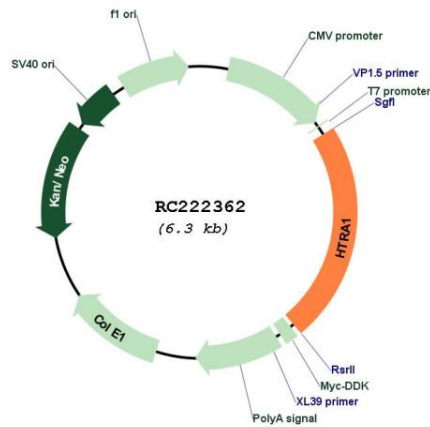
Domains: IB, Tryp_SPc, PDZ, kazal

Protein Families: Druggable Genome, Protease, Secreted Protein

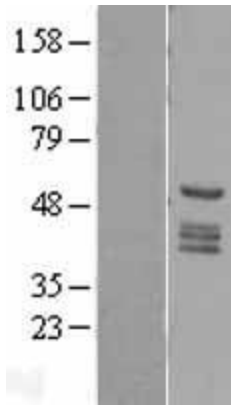
MW: 51.3 kDa

Gene Summary: This gene encodes a member of the trypsin family of serine proteases. This protein is a secreted enzyme that is proposed to regulate the availability of insulin-like growth factors (IGFs) by cleaving IGF-binding proteins. It has also been suggested to be a regulator of cell growth. Variations in the promoter region of this gene are the cause of susceptibility to age-related macular degeneration type 7. [provided by RefSeq, Jul 2008]

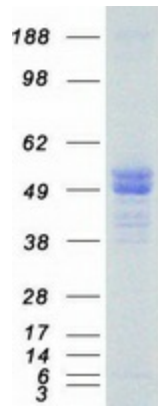
Product images:



Circular map for RC222362



Western blot validation of overexpression lysate (Cat# [LY400983]) using anti-DDK antibody (Cat# [TA50011-100]). Left: Cell lysates from untransfected HEK293T cells; Right: Cell lysates from HEK293T cells transfected with RC222362 using transfection reagent MegaTran 2.0 (Cat# [TT210002]).



Coomassie blue staining of purified HTRA1 protein (Cat# [TP322362]). The protein was produced from HEK293T cells transfected with HTRA1 cDNA clone (Cat# RC222362) using MegaTran 2.0 (Cat# [TT210002]).