

Product datasheet for RC222161

SCN1B (NM_199037) Human Tagged ORF Clone

Product data:

Product Type:	Expression Plasmids
Product Name:	SCN1B (NM_199037) Human Tagged ORF Clone
Tag:	Myc-DDK
Symbol:	SCN1B
Synonyms:	ATFB13; BRGDA5; DEE52; EIEE52; GEFSP1
Mammalian Cell Selection:	Neomycin
Vector:	pCMV6-Entry (PS100001)
E. coli Selection:	Kanamycin (25 ug/mL)
ORF Nucleotide Sequence:	>RC222161 representing NM_199037 Red=Cloning site Blue=ORF Green=Tags(s)

TTTTGTAATACGACTCACTATAGGGCGGCCGGAATTCGTCGACTGGATCCGGTACCGAGGAGATCTGCC
GCC**CGATCGC**C

ATGGGGAGGCTGCTGGCCTTAGTGGTCGGCGGGCACTGGTGTCTCAGCCTGCGGGGGCTGCGTGGAGG
TGGACTCGGAGACCGAGGCCGTGTATGGGATGACCTTCAAATTTTTCATCTCCTGCAAGCGCCGAG
CGAGACCAACGCTGAGACCTTACCGAGTGGACCTTCCGCCAGAAGGGCACTGAGGAGTTTGTCAAGATC
CTGCGCTATGAGAATGAGGTGTTGCAGCTGGAGGAGGATGAGCGCTTCGAGGGCCCGTGGTGTGAATG
GCAGCCGGGGACCAAAGACCTGCAGGATCTGTCTATCTTCATCACCAATGTCACCTACAACCACTCGGG
CGACTACGAGTGCCACGTCTACCGCTGCTCTTCTCGAAAACACGAGCACAACACCAGCGTCGTCGAA
AAGATCCACATTGAGGTAGTGGACAAAGGTGAGTCGGGTGCTGCCTGCCCTTTACCGTCAACCCACCGGA
GAGCCAGATGGAGGGACAGATGGCAGGCAGTGGACAGGACAGGCTGGCTCTGTGCCTGGCCAGCCAAACCG
CCCACAGCAGCGGGCTGAGGGGGAGGGGAGCAGCCCTCCTGCCACTCCAGCTCTGGCCTCTGTTTCTC
TCCAGCCACGGAGAGGTCAAAGCATGCCTGTCCCCACAGACGCTCCGGGTACAGAACCAGCTCTGTC
ACCTGTGCTGTATGACCTCTGGCAGGTGCCTTCTGTCTCTGAGCCAAAGGGTTGCTCTGGGCTTGCCCGG
GATAATAATCCGATGTGTTTCTCGGGGTGTGGTT

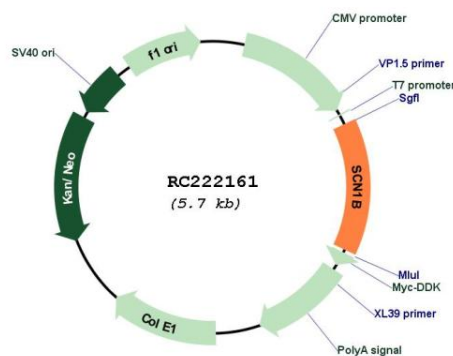
ACGCGTACGCGGCCGCTCGAGCAGAAACTCATCTCAGAAGAGGATCTGGCAGCAAATGATATCCTGGATT
ACAAGGATGACGACGATAAGGTTTAA



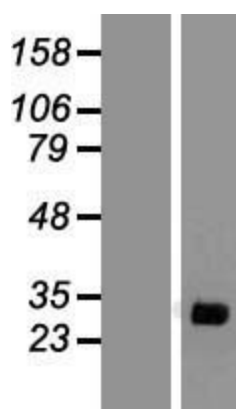
[View online »](#)

Reconstitution Method:	<ol style="list-style-type: none">1. Centrifuge at 5,000xg for 5min.2. Carefully open the tube and add 100ul of sterile water to dissolve the DNA.3. Close the tube and incubate for 10 minutes at room temperature.4. Briefly vortex the tube and then do a quick spin (less than 5000xg) to concentrate the liquid at the bottom.5. Store the suspended plasmid at -20°C. The DNA is stable for at least one year from date of shipping when stored at -20°C.
RefSeq:	NM_199037.5
RefSeq Size:	1170 bp
RefSeq ORF:	807 bp
Locus ID:	6324
UniProt ID:	Q07699
Cytogenetics:	19q13.11
Protein Families:	Druggable Genome, Ion Channels: Sodium, Transmembrane
MW:	30.3 kDa
Gene Summary:	Voltage-gated sodium channels are heteromeric proteins that function in the generation and propagation of action potentials in muscle and neuronal cells. They are composed of one alpha and two beta subunits, where the alpha subunit provides channel activity and the beta-1 subunit modulates the kinetics of channel inactivation. This gene encodes a sodium channel beta-1 subunit. Mutations in this gene result in generalized epilepsy with febrile seizures plus, Brugada syndrome 5, and defects in cardiac conduction. Multiple transcript variants encoding different isoforms have been found for this gene.[provided by RefSeq, Oct 2009]

Product images:



Circular map for RC222161



Western blot validation of overexpression lysate (Cat# [LY404718]) using anti-DDK antibody (Cat# [TA50011-100]). Left: Cell lysates from untransfected HEK293T cells; Right: Cell lysates from HEK293T cells transfected with RC222161 using transfection reagent MegaTran 2.0 (Cat# [TT210002]).