

Product datasheet for RC221820

CD44 (NM_001001391) Human Tagged ORF Clone

Product data:

Product Type:	Expression Plasmids
Product Name:	CD44 (NM_001001391) Human Tagged ORF Clone
Tag:	Myc-DDK
Symbol:	CD44
Synonyms:	CDW44; CSPG8; ECMR-III; HCELL; HUTCH-I; IN; LHR; MC56; MDU2; MDU3; MIC4; Pgp1
Mammalian Cell Selection:	Neomycin
Vector:	pCMV6-Entry (PS100001)
E. coli Selection:	Kanamycin (25 ug/mL)
ORF Nucleotide Sequence:	>RC221820 representing NM_001001391 Red=Cloning site Blue=ORF Green=Tags(s)

TTTTGTAATACGACTCACTATAGGGCGCCGGGAATTCGTCGACTGGATCCGGTACCGAGGAGATCTGCC
GCC**CGATCGCC**

ATGGACAAGTTTTGGTGGCAGCAGCCTGGGACTCTGCCTCGTGCCGCTGAGCCTGGCGCAGATCGATT
TGAATATAACCTGCCGCTTTCAGGTGTATTCCACGTGGAGAAAAATGGTCGCTACAGCATCTCTCGGAC
GGAGGCCGCTGACCTCTGCAAGGCTTTCATAGCACCTTGCCACAATGGCCAGATGGAGAAAGCTCTG
AGCATCGGATTTGAGACCTGCAGGTATGGGTTCATAGAAGGGCACGTGGTGATCCCGGATCCACCCCA
ACTCCATCTGTGCAGAAACAACACAGGGGTGTACATCCTCACATCCAACACCTCCAGTATGACACATA
TTGCTTCAATGCTTCAGCTCCACCTGAAGAAGATTGTACATCAGTCACAGACCTGCCAATGCCTTTGAT
GGACCAATTACCATAACTATTGTTAACCGTGATGGCACCCGCTATGTCCAGAAAGGAGAATACAGAACGA
ATCCTGAAGACATCTACCCAGCAACCCTACTGATGATGACGTGAGCAGCGGCTCCTCCAGTGAAAGGAG
CAGCACTTCAGGAGGTTACATCTTTACACCTTTTCTACTGTACACCCCATCCCAGACGAAGACAGTCCC
TGGATCACCGACAGCACAGACAATCCCTGCTACCAGAGACCAAGACACATTCCACCCAGTGGGGGT
CCCATACCACTCATGGATCTGAATCAGATGGACTCACATGGGAGTCAAGAAGGTGGAGCAAACAAC
CTCTGGTCCTATAAGGACACCCCAAAATCCAGAATGGCTGATCATCTTGGCATCCCTCTTGGCCTTGGCT
TTGATTCTGCAGTTTGCATTGCAGTCAACAGTCAAGAAGGTGTGGCAGAAGAAAAAGCTAGTGATCA
ACAGTGGCAATGGAGCTGTGGAGGACAGAAAGCCAAGTGGACTCAACGGAGAGGCCAGCAAGTCTCAGGA
AATGGTGCAATTTGGTGAACAAGGAGTCGTCAGAAACTCCAGACCAGTTTATGACAGCTGATGAGACAAGG
AACCTGCAGAATGTGGACATGAAGATTGGGGTG

ACGCGTACGCGGCCGCTCGAGCAGAAACTCATCTCAGAAGAGGATCTGGCAGCAATGATATCCTGGATT
ACAAGGATGACGACGATAAGGTTAA



[View online »](#)

Reconstitution Method:

1. Centrifuge at 5,000xg for 5min.
2. Carefully open the tube and add 100ul of sterile water to dissolve the DNA.
3. Close the tube and incubate for 10 minutes at room temperature.
4. Briefly vortex the tube and then do a quick spin (less than 5000xg) to concentrate the liquid at the bottom.
5. Store the suspended plasmid at -20°C. The DNA is stable for at least one year from date of shipping when stored at -20°C.

RefSeq: [NM_001001391.2](#)

RefSeq Size: 4605 bp

RefSeq ORF: 1086 bp

Locus ID: 960

UniProt ID: [P16070](#)

Cytogenetics: 11p13

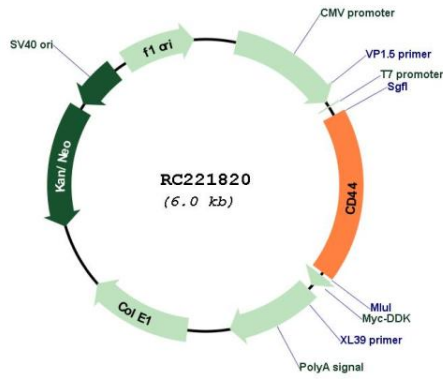
Protein Families: Adult stem cells, Cancer stem cells, Druggable Genome, Embryonic stem cells, ES Cell Differentiation/IPS, Stem cell relevant signaling - DSL/Notch pathway, Transmembrane

Protein Pathways: ECM-receptor interaction, Hematopoietic cell lineage

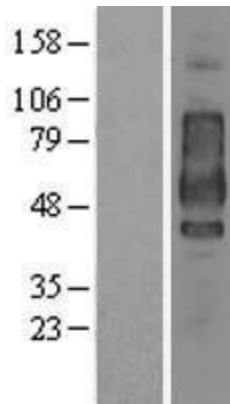
MW: 39.42 kDa

Gene Summary: The protein encoded by this gene is a cell-surface glycoprotein involved in cell-cell interactions, cell adhesion and migration. It is a receptor for hyaluronic acid (HA) and can also interact with other ligands, such as osteopontin, collagens, and matrix metalloproteinases (MMPs). This protein participates in a wide variety of cellular functions including lymphocyte activation, recirculation and homing, hematopoiesis, and tumor metastasis. Transcripts for this gene undergo complex alternative splicing that results in many functionally distinct isoforms, however, the full length nature of some of these variants has not been determined. Alternative splicing is the basis for the structural and functional diversity of this protein, and may be related to tumor metastasis. [provided by RefSeq, Jul 2008]

Product images:



Circular map for RC221820



Western blot validation of overexpression lysate (Cat# [LY424334]) using anti-DDK antibody (Cat# [TA50011-100]). Left: Cell lysates from untransfected HEK293T cells; Right: Cell lysates from HEK293T cells transfected with RC221820 using transfection reagent MegaTran 2.0 (Cat# [TT210002]).