

## Product datasheet for RC221795

### smooth muscle Myosin heavy chain 11 (MYH11) (NM\_001040114) Human Tagged ORF Clone

#### Product data:

Product Type:	Expression Plasmids
Product Name:	smooth muscle Myosin heavy chain 11 (MYH11) (NM_001040114) Human Tagged ORF Clone
Tag:	Myc-DDK
Symbol:	smooth muscle Myosin heavy chain 11
Synonyms:	AAT4; FAA4; SMHC; SMMHC; VSCM2
Mammalian Cell Selection:	Neomycin
Vector:	pCMV6-Entry (PS100001)
E. coli Selection:	Kanamycin (25 ug/mL)
ORF Nucleotide Sequence:	>RC221795 representing NM_001040114 Red=Cloning site Blue=ORF Green=Tags(s)

TTTTGTAATACGACTCACTATAGGGCGGCCGGAATTCGTCGACTGGATCCGGTACCGAGGAGATCTGCC  
GCCCGCATCGCC

ATGGCGCAGAAGGGCCAACCTCAGTGACGATGAGAAGTTCCTCTTTGTGGACAAAACTTCATCAACAGCC  
CAGTGGCCAGGCTGACTGGGCCCAAGAGACTCGTCTGGTCCCCTCGGAGAAGCAGGGCTTCGAGGC  
AGCCAGCATTAAAGGAGAGAAGGGGATGAGGTGGTTGTGGAGCTGGTGGAGAATGGCAAGAAGGTCAGC  
GTTGGGAAAGATGACATCCAGAAGATGAACCCACCAAGTTCCTCAAGGTGGAGGACATGGCGGAGCTGA  
CGTGCCTCAACGAAGCCTCCGTGCTACACAACCTGAGGGAGCGGTAATCTCAGGGCTAATATACGTA  
CTCTGGCCTCTTCTGCGTGGTCAACCCCTATAAACACCTGCCATCTACTCGGAGAAGATCGTCGAC  
ATGTACAAGGGCAAGAAGAGGCACGAGATGCCGCCTCACATCTACGCCATCGCAGACACGGCCTACCGGA  
GCATGCTTCAAGATCGGGAGGACCAGTCCATTCTATGCACAGGCGAGTCTGGAGCCGGGAAAACCGAAAA  
CACCAAGAAGGTCATTACGTACCTGGCCGTGGTGGCCTCCTCCCAAGGGCAAGAAAGACACAAGTATC  
ACGCAAGGCCATCTTTGCTACGGAGAGCTGAAAAGCAGCTTCTACAAGCAAACCGATTCTGGAGG  
CTTTGCGCAACGCCAAAACAGTGAAGAACGACAACCTCAGGATTCGGCAAATTCATCCGCATCAACT  
CGACGTCACGGGTTACATCGTGGGAGCCAACATTGAGACCTATCTGCTAGAAAAATCACGGGCAATTCGC  
CAAGCCAGAGACGAGAGGACATTCACATCTTTACTACATGATTGCTGGAGCCAAGGAGAGATGAGAA  
GTGACTTGCTTTTGGAGGGCTTCAACAACCTACACCTCCTCCTCAATGGCTTTGTGCCATCCCAGCAGC  
CCAGGATGATGAGATGTTCCAGGAAACCGTGGAGGCCATGGCAATCATGGGTTTACGCGAGGAGGAGCAG  
CTATCCATATTGAAGGTGGTATCATCGGTCTGCAGCTTGAAAATATCGTCTTCAAGAAGGAAAGAAACA  
CAGACCAGGCGTCCATGCCAGATAACACAGCTGCTCAGAAAGTTTGCCACCTCATGGGAATTAATGTGAC  
AGATTTACCAGATCCATCCTCACTCCTCGTATCAAGGTTGGGCGAGATGTGGTACAGAAAGCTCAGACA  
AAAGAACAGGCTGACTTTGCTGTAGAGGCTTTGGCCAAGGCAACATATGAGCGCCTTTCCGCTGGATAC  
TACCCCGCTGAACAAAGCCCTGGACAAGACCCATCGGCAAGGGGCTTCTTCTGGGGATCCTGGATAT  
AGCTGGATTTGAGATCTTTGAGGTGAACCTTCGAGCAGCTGTGCATCAACTACCAACGAGAAGCTG



[View online »](#)

CAGCAGCTCTTCAACCACACCATGTTTCATCCTGGAGCAGGAGGAGTACCAGCGCAGGGCATCGAGTGGA  
 ACTTCATCGACTTTGGGCTGGACCTACAGCCCTGCATCGAGCTCATCGAGCGACCGAACCAACCTCCAGG  
 TGTGCTGGCCCTGCTGGACGAGGAATGCTGGTCCCAAGCCACGGACAAGTCTTTCGTGGAGAAGCTG  
 TGCACGGAGCAGGGCAGCCACCCCAAGTCCAGAAGCCCAAGCAGCTCAAGGACAAGACTGAGTTCTCCA  
 TCATCCATTATGCTGGGAAGGTGACTATAATGCGAGTGCCTGGCTGACCAAGAATATGGACCCGCTGAA  
 TGACAACGTGACTTCCCTGCTCAATGCCTCCTCCGACAAGTTTGTGGCCGACCTGTGGAAGGACGTGGAC  
 CGCATCGTGGCCCTGGACCAGATGGCCAAGATGACGGAGAGCTCGCTGCCAGCGCTCCAAGACCAAGA  
 AGGGCATGTTCCGCACAGTGGGGCAGCTGTACAAGGAGCAGCTGGGCAAGCTGATGACCAGCTACGC  
 CACCACGCCCAACTTCGTGCGCTGCATCATCCCAACCACGAGAAGAGGTCGGGCAAGCTGGATGCGTTC  
 CTGGTGTGGAGCAGCTGCGGTGCAATGGGGTGTGGAAGGCATTGCGATCTGCCGCGAGGGCTTCCCA  
 ACCGGATCGTCTTCCAGGAGTCCGCCAACGCTACGAGATCCTGGCGGCAATGCCATCCCAAGGCTT  
 CATGGACGGGAAGCAGGCTGCATTCTCATGATCAAAGCCCTGGAACCTGACCCCACTTACAGGATA  
 GGGCAGAGCAAAATCTTCTCCGAAGTGGCGTCTGGCCACCTAGAGGAGGAGCGAGATTTGAAGATCA  
 CCGATGTCATCATGGCCTTCCAGGCGATGTGCTGGCTACTTGGCCAGAAAGGCTTTTGCAGAGGCA  
 GCAGCAGCTGACCGCCATGAAGGTGATTACAGGAACTGCGCCGCTACCTCAAGCTGCGGAACTGGCAG  
 TGGTGGAGGCTTTTACCAGAAAGTGAAGCCACTGCTGCAGGTGACACGGCAGGAGGAGGAGATGCAGGCCA  
 AGGAGGATGAACTGCAGAAGACCAAGGAGCGGCAGCAGAAGGCAGAGAATGAGCTTAAGGAGCTGGAACA  
 GAAGCACTCGCAGCTGACCGAGGAGAAGAACTGCTACAGGAACAGCTGCAGGCAGAGACAGAGCTGTAT  
 GCAGAGGCTGAGGAGATGCGGGTGCAGCTGGCGGCAAGAAGCAGGAGCTGGAGGAGATACTGCATGAGA  
 TGGAGGCCCGCTGGAGGAGGAGGAAGCAGGGCCAGCAGCTACAGGCTGAAAGGAAGAAGATGGCCCA  
 GCAGATGCTGGACCTTGAAGAACAGCTGGAGGAGGAGGAACTGCCAGGCAGAAGCTGCAACTTGAGAAG  
 GTCACGGCTGAGGCCAAGATCAAGAACTGGAGGATGAGATCCTGGTTCATGGATGATCAGAACAATAAC  
 TATCAAAAGAACGAAACTCCTTGAGGAGGATTAGTGACTAACGACAATCTTGCAAGAGGAAAGA  
 AAAGGCCAAGAATCTTACCAAGCTGAAAAACAAGCATGAATCTATGATTTCAAGAACTGGAAGTGGCGCTA  
 AAGAAGGAAGAGAAGAGCCGACAGGAGCTGGAGAAGCTGAAACGGAAGCTGGAGGGTGTGCCAGCGACT  
 TCCACGAGCAGATCGCTGACCTCCAGGCGCAGATCGCAGAGCTCAAGATGCAGCTGGCCAAGAAGGAGGA  
 GGAGCTGCAGGCGGCCCTGGCCAGGCTTACGATGAAATCGCTCAGAAGAACAATGCCCTGAAGAAGATC  
 CGGGAGCTGGAGGGCCACATCTCAGACCTCCAGGAGGACTGGACTCAGAGCGGGCCGCAAGAACAGG  
 CTGAAAAGCAGAAGCAGACCTCGGCGAGGAGCTGGAGGCCCTAAAGACAGAGCTGGAAGACACACTGGA  
 CAGCACAGCCACTCAGCAGGAGCTCAGGGCCAAGAGGGAGCAGGAGGTGACGGTGTGAAGAAGGCCCTG  
 GATGAAGAGACGCGGTCCATGAGGCTCAGGTCCAGGAGATGAGGCAGAAACACGCACAGCGGTGGAGG  
 AGCTCACAGAGCAGCTTGAAGCAGTTCAAGAGGGCCAAGGCGAACCTAGACAAGAATAAGCAGACCGTGG  
 GAAAGAGAACGCAGACCTGGCCGGGAGCTGCGGGTCTGGGCCAGGCCAAGCAGGAGGTGGAACATAAG  
 AAGAAGAAGCTGGAGGCGCAGGTGCAGGAGCTGCAGTCCAAGTGCAGCGATGGGGAGCGGGCCGGGCGG  
 AGCTCAATGACAAAGTCCACAAGCTGCAGAATGAAGTTGAGAGCGTCACAGGGATGCTTAACGAGGCCGA  
 GGGGAAGGCCATTAAGCTGGCCAAGGACGTGGCGTCCCTCAGTTCACAGCTCCAGGACACCCAGGAGCTG  
 CTTCAAGAAGAAACCCGGCAGAAGCTCAACGTGTCTACGAAGCTGCGCCAGCTGGAGGAGGAGCGGAACA  
 GCCTGCAAGACCAGCTGGACGAGGAGATGGAGGCCAAGCAGAACCTGGAGCGCCACATCTCCACTCTCAA  
 CATCCAGCTCTCCGACTCGAAGAAGAAGCTGCAGGACTTGGCAGCACCTGGAAGCTGTGGAAGAGGGG  
 AAGAAGAGGTTCCAGAAGGAGATCGAGAACCTCACCCAGCAGTACGAGGAGAAGGCGGCCGCTTATGATA  
 AACTGGAAAAGACCAAGAACAGGCTTACGAGGAGCTGGACGACCTGGTGTGATTGGACAACACAGCG  
 GCAACTCGTGTCCAACCTGGAAAAGAAGCAGAGGAAATTTGATCAGTTGTTAGCCGAGGAGAAAAACATC  
 TCTTCCAATACGCGGATGAGAGGGACAGAGCTGAGGCAGAAGCCAGGGAGAAGGAAACCAAGGCCCTGT  
 CCCTGGCTCGGGCCCTTGAAGAGGCTTGAAGGCCAAGAGGAACTCGAGCGGACCAACAAAATGCTCAA  
 AGCCGAAATGGAAGACCTGGTCAAGTCAAGGATGACGTGGGCAAGAACGTCCATGAGCTGGAGAAGTCC  
 AAGCGGGCCCTGGAGACCAGATGGAGGAGATGAAGACGACGCTGGAAGAGCTGGAGGACGAGCTGCAAG  
 CCACGGAGGACGCCAACTGCGGCTGGAAGTCAACATGCAGGCGCTCAAGGGCCAGTTGCAAGGGATCT  
 CCAAGCCCGGGACGAGCAGAATGAGGAGAAGAGGAGGCAACTGCAGAGACAGCTTACAGATATGAGACG  
 GAACTGGAAGACGAGCAGAAAGCAACGTGCCCTGGCAGCTGCAGCAAGAAGAAGCTGGAAGGGGACCTGA  
 AAGACCTGGAGCTTACAGGCCACTCTGCCATCAAGGGGAGGGAGGAAGCCATCAAGCAGCTACGCAAACT  
 GCAGGCTCAGATGAAGGACTTTCAAAGAGAGCTGGAAGATGCCCGTGCCTCCAGAGATGAGATCTTTGCC  
 ACAGCCAAAGAGAATGAGAAGAAAGCAAGAGCTTGAAGCAGACCTCATGCAGCTACAAGAGGACCTCG

CCGCCGCTGAGAGGGCTCGCAAACAAGCGGACCTCGAGAAGGAGGAAGTGGCAGAGGAGCTGGCCAGTAG  
 CCTGTCCGGGAAGGAACGCACTCCAGGACGAGAAGCGCCGCTGGAGGCCCGGATCGCCAGCTGGAGGAG  
 GAGCTGGAGGAGGAGCAGGGCAACATGGAGGCCATGAGCGACCGGGTCCGCAAAGCCACACAGCAGGCCG  
 AGCAGCTCAGCAACGAGCTGGCCACAGAGCGCAGCACGGCCAGAAAGATGAGAGTGCCCGGAGCAGCT  
 CGAGCGGCAGAACAGGAGCTCCGGAGCAAGCTCCACGAGATGGAGGGGGCCGTCAGTCCAAGTTCAG  
 TCCACCATCGCGCGCTGGAGGCCAAGATTGCACAGCTGGAGGAGCAGGTTCGAGCAGGAGCCAGAGAGA  
 AACAGGCGGCCACCAAGTTCGTGAAGCAGAAAGACAAGAAGCTGAAGGAAATCTTGTGCAGGTGGAGGA  
 CGAGCGCAAGATGGCCGAGCAGTACAAGGAGCAGGCAGAGAAAGCAATGCCAGGGTCAAGCAGCTCAAG  
 AGGCAGCTGGAGGAGGCAGAGGAGGAGTCCCAGCGCATCAACGCCAACCCAGGAAGCTGCACGGGAGC  
 TGGATGAGGCCACGGAGAGCAACGAGGCCATGGGCCGCGAGGTGAACGCACTCAAGAGCAAGCTCAGGCG  
 AGGAAACGAGACCTTTTCGTTCTTCTAGAAGGTCTGGAGGACGTAGAGTTATTGAAAATGCAGATGGT  
 TCTGAGGAGAAACGGACACTCGAGACGACAGTTCATGGAACCAAGGCCAGTAA

ACGCGTACGCGGCCGCTCGAGCAGAAACTCATCTCAGAAGAGGATCTGGCAGCAATGATATCCTGGATT  
 ACAAGGATGACGACGATAAGGTTTAA

**Protein Sequence:**

>RC221795 representing NM\_001040114

Red=Cloning site Green=Tags(s)

MAQKQQLSDDEKFLFVDKNFINSVPAQADWAAKRLVWVPEKQGFEEAASIKKEEGDEVVVELVENGKTVT  
 VGKDDIQKMNPPKFSKVEDMAELTCLNEASVLHNLRRERYFSGLIYTYSGLFCVVVNPYKHLPIYSEKIVD  
 MYKGGKRHEMPPHIYAIADTAYRSMQLDREDQSILCTGESGAGKTENTKKVIQYLAVVASSHKGKDTSI  
 TQGPSFAYGELEKQLLQANPILEAFGNAKTVKNDNSSRFKGFIRINFDVTGYIVGANIETYLLEKRAIR  
 QARDERTFHIFYYMIAGAKEKMRSDLLLEGFNNYTFLSNGFVPIPAAQDDEMVFQETVEAMAIMGFSEEEQ  
 LSILKVVSSVLQGNIVFKKERNTDQASMPDNTAAQKVCHLMGINVTDFTSRILTPRIKVRDQVQKQAT  
 KEQADFAVEALAKATYERLFRWILTRVNKALDKTHRQASFLGILDIAGFEIFEVNSFEQLCINYNTEKL  
 QQLFNHTMFILEQEEYQREGIEWNFIDFGLDLQPCIELIERPNNPPGVLALLDEECWFPKATDKSFVEKL  
 CTEQGSHPKFQPKQLKDKTEFSIIHYAGKVDYNASAWLTKNMDPLNDNVTSLLNASSDKFVADLWKDVD  
 RIVGLDQMAKMTSSPSASKTKKGMFRTVGQLYKEQLGKLMTTLRNTTPNFVRCIIPNHEKRSGLDAF  
 LVLEQLRCNGVLEGRICRQGFNRIVFQEFQRQYEILAANAIPKGFMDGKQACILMIKALELDPNLYRI  
 GQSKIFFRTGVLAHLEERDLKITDVIMAFQAMCRGYLARKAFARQQLTAMKVIQRNCAAYLKLRLNWQ  
 WWRLFTKVKPLLQVTRQEEEMQAKEDLQKTKERQQAENELKELEQKHSQLEEKNLLEQQLQAETELY  
 AEAEEMRVRLAAKKQELEEILHEMEARLEEEEDRGQQLQAERKKMAQQMLDLEEQLEEEEAARQKLQLEK  
 VTAEAKIKKLEDEILVMDDQNNKLSKERKLEERI SDLTTNLAEEEEKAKNLTKLKNKHESMISELEVR  
 KKEEKSRQLEKLRKLEGDASDFHEQIADLQAQIAELKMQLAKKEEELQAALARLDDEIAQKNNALKKI  
 RELEIGHISDLQEDLDSERAARNKAEKQKRDLEGELEALKTELEDLTDSTATQQLRAKREQEVTVLKKAL  
 DEETRSHEAQVQEMRQKHAQAVEELTEQLEQFKRAKANL DKNKQTLKENADLAGELRVLGQAKQVEVHK  
 KKKLEAQVQELQSKCSDGERARAELNDKVHKLQNEVESVTGMLNEAEGKAIKLAKDVASLSSQLQDTQEL  
 LQEETRQKLVNSTKLRLQLEERNLSDQLDEEMAKQNLERHISTLNIQLSDSKKQLQFASTVEALEEG  
 KKRFRQKEIENLTQQYEEKAAAYDKLEKTKNRLQQLDDLVDLNDQRQLVSNLEKKQRKFDQLLAEKNI  
 SSKYADERDRAEAEAREKETKALSLARALEEALAEKEELERTNKMMLKAEMEDLVSSKDDVGNVHELEKS  
 KRALETQMEEMKTLQEELEDELQATEDAKLRLEVNMQALKGQFERDLQARDEQNEEKRRQLRQLHEYET  
 ELEDERKQRALAAAANKKLEGLDKLELQADSAIKGEEAIKQLRKLQAQMKDFQRELEDAASRDEIFA  
 TAKENEKAKSLEADLMQLQEDLAAAERARKQADLEKEELAEELASSLSGRNALQDEKRRLEARIAQLEE  
 ELEEEQGNMEAMSDRVKATQQAELSNELATERSTAQKNESARQQLERQNKELRSKLHEMGAVKSKFK  
 STIAALEAKIAQLEEQVEQEAQKQAATKSLKQKDKLKEILLQVEDERKMAEQYKEQAEKGNARVQQLK  
 RQLEEEAEEEEQRINANRRKLQRELEDEATESNEAMGREVNALKSKLRRGNETSFPVSRSSGRRVIENADG  
 SEEETDTRDADFNGTKASE

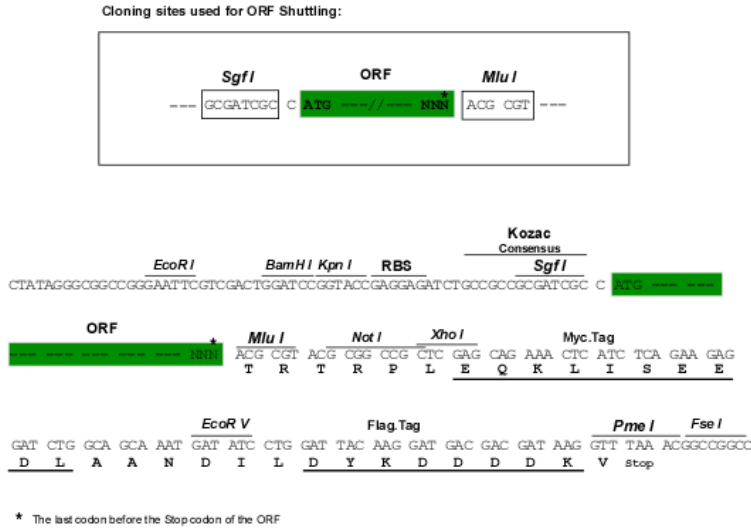
TRTRPLEQKLISEEDLAANDILDYKDDDDKV

**Chromatograms:**

[https://cdn.origene.com/chromatograms/mk8040\\_c03.zip](https://cdn.origene.com/chromatograms/mk8040_c03.zip)

Restriction Sites: SgfI-MluI

Cloning Scheme:



ACCN: NM\_001040114

ORF Size: 5937 bp

OTI Disclaimer: The molecular sequence of this clone aligns with the gene accession number as a point of reference only. However, individual transcript sequences of the same gene can differ through naturally occurring variations (e.g. polymorphisms), each with its own valid existence. This clone is substantially in agreement with the reference, but a complete review of all prevailing variants is recommended prior to use. [More info](#)

OTI Annotation: This clone was engineered to express the complete ORF with an expression tag. Expression varies depending on the nature of the gene.

Components: The ORF clone is ion-exchange column purified and shipped in a 2D barcoded Matrix tube containing 10ug of transfection-ready, dried plasmid DNA (reconstitute with 100 ul of water).

- Reconstitution Method:
1. Centrifuge at 5,000xg for 5min.
  2. Carefully open the tube and add 100ul of sterile water to dissolve the DNA.
  3. Close the tube and incubate for 10 minutes at room temperature.
  4. Briefly vortex the tube and then do a quick spin (less than 5000xg) to concentrate the liquid at the bottom.
  5. Store the suspended plasmid at -20°C. The DNA is stable for at least one year from date of shipping when stored at -20°C.

RefSeq: [NM\\_001040114.1](#), [NP\\_001035203.1](#)

RefSeq Size: 6903 bp

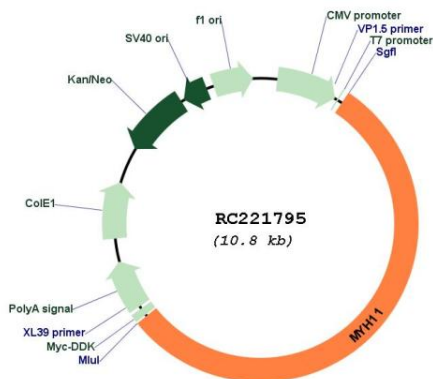
RefSeq ORF: 5940 bp

Locus ID: 4629

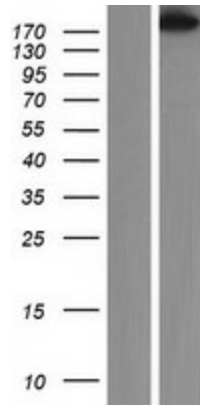
UniProt ID: [P35749](#)  
 Cytogenetics: 16p13.11  
 Protein Pathways: Tight junction, Vascular smooth muscle contraction, Viral myocarditis  
 MW: 227.9 kDa

**Gene Summary:** The protein encoded by this gene is a smooth muscle myosin belonging to the myosin heavy chain family. The gene product is a subunit of a hexameric protein that consists of two heavy chain subunits and two pairs of non-identical light chain subunits. It functions as a major contractile protein, converting chemical energy into mechanical energy through the hydrolysis of ATP. The gene encoding a human ortholog of rat NUDE1 is transcribed from the reverse strand of this gene, and its 3' end overlaps with that of the latter. The pericentric inversion of chromosome 16 [inv(16)(p13q22)] produces a chimeric transcript that encodes a protein consisting of the first 165 residues from the N terminus of core-binding factor beta in a fusion with the C-terminal portion of the smooth muscle myosin heavy chain. This chromosomal rearrangement is associated with acute myeloid leukemia of the M4Eo subtype. Alternative splicing generates isoforms that are differentially expressed, with ratios changing during muscle cell maturation. Alternatively spliced transcript variants encoding different isoforms have been identified. [provided by RefSeq, Jul 2008]

**Product images:**



Circular map for RC221795



Western blot validation of overexpression lysate (Cat# [LY421683]) using anti-DDK antibody (Cat# [TA50011-100]). Left: Cell lysates from untransfected HEK293T cells; Right: Cell lysates from HEK293T cells transfected with RC221795 using transfection reagent MegaTran 2.0 (Cat# [TT210002]).