

Product datasheet for **RC221745**

Pancreatic Lipase Related Protein 2 (PNLIPRP2) (NM_005396) Human Tagged ORF Clone

Product data:

Product Type:	Expression Plasmids
Product Name:	Pancreatic Lipase Related Protein 2 (PNLIPRP2) (NM_005396) Human Tagged ORF Clone
Tag:	Myc-DDK
Symbol:	Pancreatic Lipase Related Protein 2
Synonyms:	PLRP2
Mammalian Cell Selection:	Neomycin
Vector:	pCMV6-Entry (PS100001)
E. coli Selection:	Kanamycin (25 ug/mL)



[View online »](#)

ORF Nucleotide Sequence:

>RC221745 representing NM_005396
Red=Cloning site Blue=ORF Green=Tags(s)

TTTTGTAATACGACTCACTATAGGGCGGCCGGAATTCGTGACTGGATCCGGTACCGAGGAGATCTGCC
GCCGCGATCGCC

ATGATGCTGCCCCCTTGACCCTCGGCCTTCTCCTGCTGGCCACAGTCAGAGGAAAAGAGGTCTGCTACG
GACAACTTGGCTGCTTTTCTGATGAAAAACCATGGGCAGGAACCTTCAGCGACCTGTAATAACTTCC
CTGGTCCCCCGAGGACATTGACACCCGCTTTCTCTGTACACAAATGAAAATCCAAACAACCTTCCAAC
ATCACTGGCACGGAACCAGACACCATTGAGGCTTCAAACCTTCAAACCTGGACCGCAAGACACGCTTCA
TCCATGGCTTCTTAGACAAGGCGGAGGACAGCTGGCCATCGGACATGTGCAAGAAAATGTTTGAAGTGA
GAAGGTGAACTGCATCTGTGTGGACTGGAGGCACGGTCCCGGGCAATGTACACCAAGCCGTGCAAAAC
ATTCGGTTGTTGGGCGGAGACAGCTTCTTAATAACAAGCACTGTGACGCAGCTGGGGTACAGCCTTG
AGGACGTGCATGTCATCGCCACAGCCTGGGCGGCACACGGCCGCGGAGCGGGCAGGAGGCTGGGGG
CCGCGTGGCAGGATCACAGGGCTGGATCCAGCAGGGCCGTGCTCCAGGATGAACCTGAGGAGTTCCG
TTGGATCCATCTGACCGGTGTTTGTGGATGTGATTACACAGATTCTTCTCCCATAGTTCTTCCCTAG
GTTTCGGAATGAGCCAAAAGGTGGGCCATCTGGATTTCTTCCAAATGGAGGAAAAGGAAATGCCCGGAT
TAAGAAAATGTCCTTCAACCATTACTGATATTGATGGAATATGGGAAGGAATGGTGGCTTGTGTCT
TGCAATCACCTAAGAAGCTTCGAGTATTACTCAAGCAGCGTCTCAACCTGATGGCTTCTGGGCTATC
CCTGTGCCTCCTACGATGAGTTTCAGGAGAGTAAGTGTTCCTTGTCCAGCTGAAGGATGCCCCAAAT
GGGGCACTATGCTGACCAATTAAGGGGAAAACAAGTGTGTGGAACAAACCTTTTCTGAACACAGGA
GAGAGTGGTAACCTTACTAGTTGGAGATAAAGTATCAGTACACTTTCTGGAAAAGAGAAAAGTGAATG
GGTACATCAGGATTGCTTTGTATGGAAGTAAAGTAACTGAAAACAATATGAGATTTTCAAAGGATCCCT
CAAACCAGATGCAAGTCACACGTGTGCTATTGATGTGGATTTTAAATGTTGGAAAAATACAGAAAGTTAA
TTCTCTGGAACAAACGTGGGATAAATCTATCTGAGCCAAACTGGGGCTTCCCAAATCACAGTCAAA
GTGGTGAAGATGGGACTGAGTATAATTTTTGTAGCAGCGACACTGTGGAAGAAAACGTCTTGCAATCTCT
TTACCCTGT

ACGCGTACGCGGCCGCTCGAGCAGAACTCATCTCAGAAGAGGATCTGGCAGCAATGATATCTGGATT
ACAAGGATGACGACGATAAGGTTTAA

Protein Sequence:

>RC221745 representing NM_005396
Red=Cloning site Green=Tags(s)

MMLPPWTLGLLLLATVRGKEVCYQQLGCFSDKWPAGTLQRPVKLLPWSPEDIDTRFLLYTNNPNNFQL
ITGTEPDTIEASNFQLDRKTRFIIHGFLDKAEDSWPSDMCKMFEVEKVNICVDWRHGSRAMYTQAVQN
IRVVGAEAFLLIQALSTQLGYSLEDVHVIGHSLGAHTAAEAGRRLGGRVGRITGLDPAGPCFQDEPEEVR
LDPSDAVFVDVIHTDSSPIVPSLGFMSQKVGHLDFPNGGKEMPGCKKNVLSITDIDGIWEGIGGFVS
CNHLRSFEYYSSVLPDGLGYPASYDEFQESKCFPCPAEGCPKMGHYADQFKGKTSAVEQTFLLNTG
ESGNFTSWRYKVSVTLSGKEKVNQYIRIALYGSNENSKQYEIFKGLKPDASHTCAIDVDFNVGKIQKVK
FLWNKRGINLSEPKLGASQITVQSGEDGTEYNFCSSDTEENVLQSLYPC

TRTRPLEQKLISEEDLAANDILDYKDDDDKV

Chromatograms:

https://cdn.origene.com/chromatograms/mk6161_c01.zip

Restriction Sites:

Sgfl-MluI

Cloning Scheme:



ACCN: NM_005396

ORF Size: 1410 bp

OTI Disclaimer: The molecular sequence of this clone aligns with the gene accession number as a point of reference only. However, individual transcript sequences of the same gene can differ through naturally occurring variations (e.g. polymorphisms), each with its own valid existence. This clone is substantially in agreement with the reference, but a complete review of all prevailing variants is recommended prior to use. [More info](#)

OTI Annotation: This clone was engineered to express the complete ORF with an expression tag. Expression varies depending on the nature of the gene.

Components: The ORF clone is ion-exchange column purified and shipped in a 2D barcoded Matrix tube containing 10ug of transfection-ready, dried plasmid DNA (reconstitute with 100 ul of water).

Reconstitution Method:

1. Centrifuge at 5,000xg for 5min.
2. Carefully open the tube and add 100ul of sterile water to dissolve the DNA.
3. Close the tube and incubate for 10 minutes at room temperature.
4. Briefly vortex the tube and then do a quick spin (less than 5000xg) to concentrate the liquid at the bottom.
5. Store the suspended plasmid at -20°C. The DNA is stable for at least one year from date of shipping when stored at -20°C.

RefSeq: [NM_005396.5](#)

RefSeq Size: 1486 bp

RefSeq ORF: 1410 bp

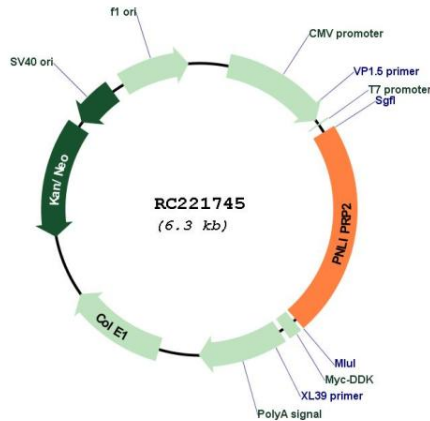
Locus ID: 5408

UniProt ID: [P54317](#)

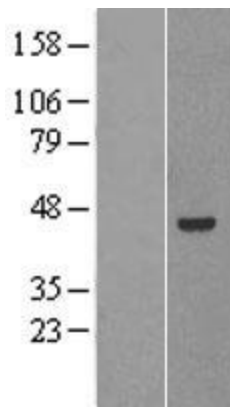
Cytogenetics: 10q25.3

Protein Families: Druggable Genome, Secreted Protein
Protein Pathways: Glycerolipid metabolism, Metabolic pathways
MW: 51.9 kDa
Gene Summary: This gene encodes a lipase that hydrolyzes galactolipids, the main components of plant membrane lipids. An allelic polymorphism in this gene results in both coding and non-coding variants; the reference genome represents the non-coding allele. [provided by RefSeq, Aug 2015]

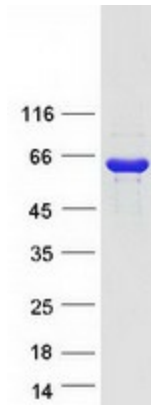
Product images:



Circular map for RC221745



Western blot validation of overexpression lysate (Cat# [LY401656]) using anti-DDK antibody (Cat# [TA50011-100]). Left: Cell lysates from untransfected HEK293T cells; Right: Cell lysates from HEK293T cells transfected with RC221745 using transfection reagent MegaTran 2.0 (Cat# [TT210002]).



Coomassie blue staining of purified PNLIPRP2 protein (Cat# [TP321745]). The protein was produced from HEK293T cells transfected with PNLIPRP2 cDNA clone (Cat# RC221745) using MegaTran 2.0 (Cat# [TT210002]).