

Product datasheet for **RC221640**

HS6ST2 (NM_147175) Human Tagged ORF Clone

Product data:

Product Type:	Expression Plasmids
Product Name:	HS6ST2 (NM_147175) Human Tagged ORF Clone
Tag:	Myc-DDK
Symbol:	HS6ST2
Synonyms:	MRXSPM
Mammalian Cell Selection:	Neomycin
Vector:	pCMV6-Entry (PS100001)
E. coli Selection:	Kanamycin (25 ug/mL)



[View online »](#)

ORF Nucleotide Sequence:

>RC221640 ORF sequence
 Red=Cloning site Blue=ORF Green=Tags(s)

TTTTGTAATACGACTCACTATAGGGCGGCCGGAATTCGTCGACTGGATCCGGTACCGAGGAGATCTGCC
 GCC**CGCATCGCC**

ATGGCACTGCCTGCGTGTGCAGTCCGGGAGTTCGAGCCGCGCGCAACCGAGCGAGGAGCGCCCGTCC
 GCACCACCTGTCCCGCCGGCATTCCAGAGTAGAGGCCGAATTGGCAGCGAGCCGGCCCGGGTTCGGTTCGC
 CGCCTCAGTTCGCGCGGGCCCTCTAGGGTGTGTCTCACGGATTCCACACCCGGCCGCTCTGGACAAG
 CCCCAGAAAGCGTCTTCTCCCTGGCGGGAGCCGCGTGCGCCCGCTTTTCGCGTGTGTCCCGGGGCC
 GCCGCAGGCGGATGCACGTCTCAGGCGACGCTGGGACCTGGGCTCCCTCTGCCGGGCCCTGCTCACTCG
 GGGCTGGCCGCCCTGGGCCACTCGCTGAAGCACGTGCTCGTGCATCTTCTCCAAGATTTTCGGCCCC
 ATGGCCAGCGTCGGGAACATGGATGAGAAATCCAACAAGCTGCTGCTAGCTTTGGTGATGCTCTTCTAT
 TTGCCGTGATCGTCTCAATACGTGTGCCCGGCACAGAATGCCAGCTCTCCGCTGCAGGCGTTCAG
 CTCGCCGTGCCGACCGTACCGCTCGGAGGATGAGAGCTCCGCCAGGTTTCGTGCCCGCTACAATTC
 ACCCGCGCGACCTCTCGCAAGGTAGACTTCGACATCAAGGGCGATGACCTGATCGTGTCTCTGCACA
 TCCAGAAGACCGGGGCCACCACTTTCCGGCCCACTTGGTGCCTAACATCCAGCTGGAGCAGCCGTGCGA
 GTGCCCGTGGGTGAGAAGAAATGCACTTGCCACCGGCCGGTAAGCGGGAAACCTGGCTCTTCTCCAGG
 TTCTCCACGGGCTGGAGCTGCGGGTTCACGCCGACTGGACCGAGCTCACCAGCTGTGTGCCCTCCGTGG
 TGGACGGCAAGCGCGACGCCAGGCTGAGACCGTCCAGGAATCCACTACATCACCATCTCCGAGACCC
 AGTGTCCCGTACTTGAGTGAGTGGAGGCATGTCCAGAGAGGGCAACATGGAAGCATCCCTGCATGTC
 TCGCATGGAAGGCTCCAACCTCGAAGAGCTGCCAGCTGTACACTGGCGATGACTGGTCTGGTCC
 CCCTCAAAGAGTTTATGGACTGTCCTACAATCTAGCCAACAACGCCAGGTGCGCATGCTCTCCGAC
 GACCCTGGTAGGCTGCTACAACCTCTGTGCATGCCTGAAAAGCAAAGAAACAAGGTCCTTCTGAAAGT
 GCCAAGTCAAATCTGAAGCACATGGCGTCTTCCGGCCTCACTGAGTTTCAGCGGAAGACCAATATCTGT
 TTGAGAAAACCTTCAACATGAACTTTATTTCCGCCATTTACCCAGTATAATACCACTAGGGCCTCTAGTGT
 AGAGATCAATGAGGAAATTCAAAAGCGTATTGAGGGACTGAATTTTCTGGATATGGAGTTGTACAGCTAT
 GCCAAAGACCTTTTTTTCAGAGGTATCAGTTTATGAGGCAGAAAGAGCATCAGGAGGCCAGGCGAAAGC
 GTCAGGAACAACGCAATTTCTGAAGGGAAGGCTCCTTCAGACCCATTTCCAGAGCCAGGGTCAGGGCCA
 GAGCCAGAATCCGAATCAGAATCAGAGTCAGAACCCAAATCCGAATGCCAATCAGAACCTGACTCAGAAT
 CTGATGCAGAATCTGACTCAGAGTTTGAAGCAGAAAGGAGAACCGGAAAGCCCGAAGCAGAACTCAGGCA
 AGGAGCAGAATGATAACACCAGCAATGGCACCAACGACTACATAGGCAGTGTAGAGAAATGGCGT

ACGCGTACGCGGCCGCTCGAGCAGAAACTCATCTCAGAAGAGGATCTGGCAGCAAATGATATCCTGGATT
 ACAAGGATGACGACGATAAGGTTTAA

Protein Sequence:

>RC221640 protein sequence
 Red=Cloning site Green=Tags(s)

MALPACAVREFEPPRQPERGAPVRTTCPRRHSRVEAELAASRPGSVAASVRAGPPRGVSHGFHTRPLLDK
 PRKASSSLAGAACAPLFAALLSRGRRRMHVLRRRWDLGSLCRALLTRGLAALGHSLKHLVGAIFSKIFGP
 MASVGNMDEKSNKLLALLVMLFLFAVIVLQYVCPGTECQLRLQAFSSPVPDPYRSEDESSARFVPRYNF
 TRGDLLRKVDFDIKDDLI VFLHIQKTGGTTFGRHLVRNIQLEQPCECRVGQKKCTCHRP GKRETWLF SR
 FSTGWSCGLHADWTEL TSCVPSVVDGKRDLRPSRNFHYITILRDPVSRYLSEWRHVQRGATWKASLHV
 CDGRPPTSEELPSCYTGDWSGCPLKEFMDCPYNLANNRQVRMLSDLTLVGCYNLSVMPEKQRNKVLLES
 AKSNLKHMAFFGLTEFQRKTQYLFEKTFNMNFI SPFTQYNTTRASSVEINEEIQKRIEGLNFLDMELYSY
 AKDLFLQRYQFMRQKEHQEARRKRQEQRKFLKGRLLQTHFQSQGQGSQNPQNQSQNPNPANQNLTON
 LMQNLTSLSQKENRESPQNSGKEQNDNTSNGTNDYIGSVEKWR

TRTRPLEQKLISEEDLAANDILDYKDDDDKV

Chromatograms:

https://cdn.origene.com/chromatograms/mk6561_c06.zip

Restriction Sites: SgfI-MluI

Cloning Scheme:



ACCN: NM_147175

ORF Size: 1815 bp

OTI Disclaimer: Due to the inherent nature of this plasmid, standard methods to replicate additional amounts of DNA in *E. coli* are highly likely to result in mutations and/or rearrangements. Therefore, OriGene does not guarantee the capability to replicate this plasmid DNA. Additional amounts of DNA can be purchased from OriGene with batch-specific, full-sequence verification at a reduced cost. Please contact our customer care team at custsupport@origene.com or by calling 301.340.3188 option 3 for pricing and delivery.

The molecular sequence of this clone aligns with the gene accession number as a point of reference only. However, individual transcript sequences of the same gene can differ through naturally occurring variations (e.g. polymorphisms), each with its own valid existence. This clone is substantially in agreement with the reference, but a complete review of all prevailing variants is recommended prior to use. [More info](#)

OTI Annotation: This clone was engineered to express the complete ORF with an expression tag. Expression varies depending on the nature of the gene.

Components: The ORF clone is ion-exchange column purified and shipped in a 2D barcoded Matrix tube containing 10ug of transfection-ready, dried plasmid DNA (reconstitute with 100 ul of water).

Reconstitution Method:

1. Centrifuge at 5,000xg for 5min.
2. Carefully open the tube and add 100ul of sterile water to dissolve the DNA.
3. Close the tube and incubate for 10 minutes at room temperature.
4. Briefly vortex the tube and then do a quick spin (less than 5000xg) to concentrate the liquid at the bottom.
5. Store the suspended plasmid at -20°C. The DNA is stable for at least one year from date of shipping when stored at -20°C.

RefSeq: [NM_147175.4](#)

RefSeq Size: 4456 bp

RefSeq ORF: 1818 bp

Locus ID: 90161

UniProt ID: [Q96MM7](#)

Cytogenetics: Xq26.2

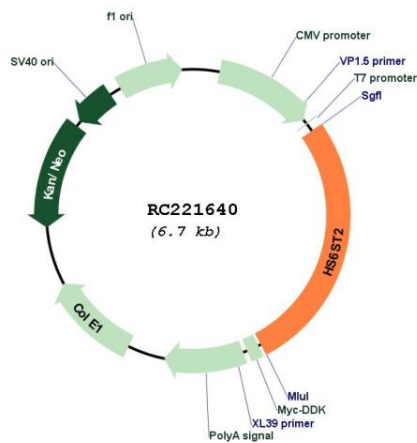
Protein Families: Transmembrane

Protein Pathways: Heparan sulfate biosynthesis

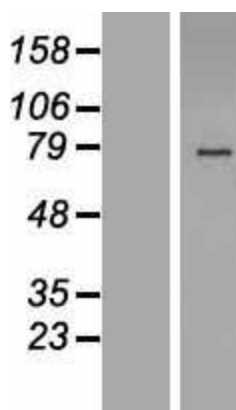
MW: 69.1 kDa

Gene Summary: Heparan sulfate proteoglycans are ubiquitous components of the cell surface, extracellular matrix, and basement membranes, and interact with various ligands to influence cell growth, differentiation, adhesion, and migration. This gene encodes a member of the heparan sulfate (HS) sulfotransferase gene family, which catalyze the transfer of sulfate to HS. Different family members and isoforms are thought to synthesize heparan sulfates with tissue-specific structures and functions. Multiple transcript variants encoding different isoforms have been found for this gene. [provided by RefSeq, Jul 2008]

Product images:



Circular map for RC221640



Western blot validation of overexpression lysate (Cat# [LY407774]) using anti-DDK antibody (Cat# [TA50011-100]). Left: Cell lysates from untransfected HEK293T cells; Right: Cell lysates from HEK293T cells transfected with RC221640 using transfection reagent MegaTran 2.0 (Cat# [TT210002]).