

Product datasheet for **RC221570L4V**

CD20 (MS4A1) (NM_152866) Human Tagged ORF Clone Lentiviral Particle

Product data:

| | |
|---------------------------|--|
| Product Type: | Lentiviral Particles |
| Product Name: | CD20 (MS4A1) (NM_152866) Human Tagged ORF Clone Lentiviral Particle |
| Symbol: | CD20 |
| Synonyms: | B1; Bp35; CD20; CVID5; FMC7; LEU-16; MS4A2; S7 |
| Mammalian Cell Selection: | Puromycin |
| Vector: | pLenti-C-mGFP-P2A-Puro (PS100093) |
| Tag: | mGFP |
| ACCN: | NM_152866 |
| ORF Size: | 891 bp |
| ORF Nucleotide Sequence: | The ORF insert of this clone is exactly the same as(RC221570). |
| OTI Disclaimer: | The molecular sequence of this clone aligns with the gene accession number as a point of reference only. However, individual transcript sequences of the same gene can differ through naturally occurring variations (e.g. polymorphisms), each with its own valid existence. This clone is substantially in agreement with the reference, but a complete review of all prevailing variants is recommended prior to use. More info |
| OTI Annotation: | This clone was engineered to express the complete ORF with an expression tag. Expression varies depending on the nature of the gene. |
| RefSeq: | NM_152866.2 |
| RefSeq Size: | 3594 bp |
| RefSeq ORF: | 894 bp |
| Locus ID: | 931 |
| UniProt ID: | P11836 |
| Cytogenetics: | 11q12.2 |
| Domains: | CD20 |
| Protein Families: | Druggable Genome, Transmembrane |



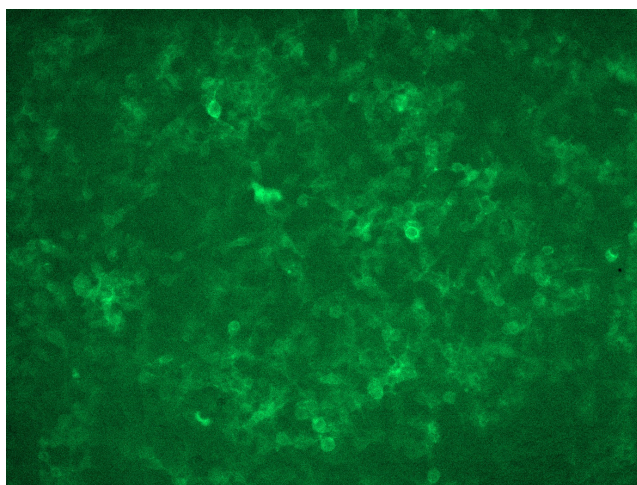
[View online »](#)

Protein Pathways: Hematopoietic cell lineage

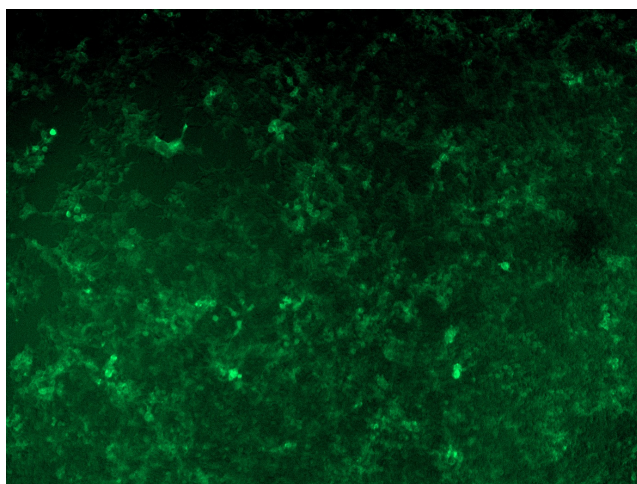
MW: 33.1 kDa

Gene Summary: This gene encodes a member of the membrane-spanning 4A gene family. Members of this nascent protein family are characterized by common structural features and similar intron/exon splice boundaries and display unique expression patterns among hematopoietic cells and nonlymphoid tissues. This gene encodes a B-lymphocyte surface molecule which plays a role in the development and differentiation of B-cells into plasma cells. This family member is localized to 11q12, among a cluster of family members. Alternative splicing of this gene results in two transcript variants which encode the same protein. [provided by RefSeq, Jul 2008]

Product images:



[RC221570L4] was used to prepare Lentiviral particles using [TR30037] packaging kit. HEK293T cells were transduced with RC221570L4V particle to overexpress human MS4A1-mGFP fusion protein.



[RC221570L4] was used to prepare Lentiviral particles using [TR30037] packaging kit. HEK293T cells were transduced with RC221570L4V particle to overexpress human MS4A1-mGFP fusion protein.