

Product datasheet for RC221489

alpha 1 Antitrypsin (SERPINA1) (NM_001002236) Human Tagged ORF Clone

Product data:

Product Type:	Expression Plasmids
Product Name:	alpha 1 Antitrypsin (SERPINA1) (NM_001002236) Human Tagged ORF Clone
Tag:	Myc-DDK
Symbol:	alpha 1 Antitrypsin
Synonyms:	A1A; A1AT; AAT; alpha1AT; nNIF; PI; PI1; PRO2275
Mammalian Cell Selection:	Neomycin
Vector:	pCMV6-Entry (PS100001)
E. coli Selection:	Kanamycin (25 ug/mL)
ORF Nucleotide Sequence:	>RC221489 ORF sequence Red=Cloning site Blue=ORF Green=Tags(s)

TTTTGTAATACGACTCACTATAGGGCGCCGGGAATTCGTCGACTGGATCCGGTACCGAGGAGATCTGCC
GCC**CGATCGCC**

ATGCCGCTTCTGTCTCGTGGGGCATCCTCCTGCTGGCAGGCCTGTGCTGCCTGGTCCCTGTCTCCCTGG
CTGAGGATCCCCAGGGAGATGCTGCCAGAAGACAGATACATCCCACCATGATCAGGATCACCCAACCTT
CAACAAGATCACCCCAACCTGGCTGAGTTCGCCTTCAGCCTATACCGCCAGCTGGCACACCAGTCCAAC
AGCACCAATATCTTCTTCTCCCACTGAGCATCGCTACAGCCTTTGCAATGCTCTCCCTGGGACCAAGG
CTGACACTCACGATGAAATCCTGGAGGGCCTGAATTTCAACCTCACGGAGATTCCGGAGGCTCAGATCCA
TGAAGGCTTCCAGGAACCTCCGTACCCTCAACCAGCCAGACAGCCAGCTCCAGCTGACCACCGCAAT
GGCTTGTCTCAGCGAGGGCCTGAAGCTAGTGGATAAGTTTTGGAGGATGTTAAAAAGTTGTACCACT
CAGAAGCCTTCACTGTCAACTTCGGGGACACCGAAGAGGCCAAGAAACAGATCAACGATTACGTGGAGAA
GGTACTCAAGGGAAAAATTGTGGATTTGGTCAAGGAGCTTGACAGAGACACAGTTTTGTCTGGTGAAT
TACATCTTCTTTAAAGGCAATGGGAGAGACCTTTGAAGTCAAGGACACCGAGGAAGAGGACTTCCACG
TGGACCAGGTGACCACCGTGAAGGTGCCTATGATGAAGCGTTTAGCATGTTAACATCCAGCACTGTA
GAAGCTGTCCAGCTGGGTGCTGCTGATGAAATACCTGGCAATGCCACCGCCATCTTCTCTGCCTGAT
GAGGGGAAACTACAGCACCTGGAAAATGAACTCACCCACGATATCATACCAAGTTCTGGAAAATGAAG
ACAGAAGGTCTGCCAGTTACATTTACCCAAACTGTCCATTACTGGAACCTATGATCTGAAGAGCGTCT
GGGTCAACTGGGCATCACTAAGGTCTTACGAATGGGGCTGACCTCTCCGGGGTACAGAGGAGGCCACCC
CTGAAGCTCTCCAAGGCCGTGCATAAGGCTGTGCTGACCATCGACGAGAAAGGGACTGAAGCTGCTGGG
CCATGTTTTAGAGGCCATACCCATGTCTATCCCCCGAGGTCAAGTTCAACAAACCTTTGTCTTCTT
AATGATTGACCAAAATACCAAGTCTCCCCTCTTCATGGGAAAAGTGGTGAATCCCACCAAAAA

ACGCGTACGCGGCCGCTCGAGCAGAAACTCATCTCAGAAGAGGATCTGGCAGCAATGATATCTGGATT
ACAAGGATGACGACGATAAGGTTTAA



[View online >](#)

Protein Sequence: >RC221489 protein sequence
Red=Cloning site Green=Tags(s)

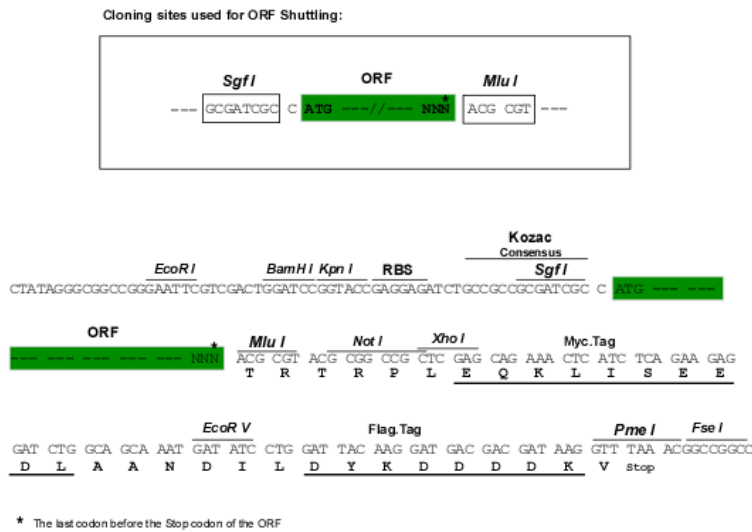
MPSSVSWGILLLAGLCLVPVSLAEDPQGDAAQKTDTSHHQDHPNFKITPNLAFAFSLYRQLAHQSN
 STNIFFSPVSIATAFAMLSLGTKADTHDEILEGLNFNLTEIPEAQIHEGFQELLRTLNPDSQLQLTTGN
 GLFLSEGLKLVDFLEDVKKLYHSEFTVNFVGDTEEAKKQINDYVEKGTQGKIVDLVKELDRDITVFLVN
 YIFFKKGWERPFVVKDTEEDFHVVDQVTVKVPMMKRLGMFNIQHCKKLSWVLLMKYLGNATAIFFLPD
 EGKLQHLLENELTHDIITKFLNEDRRSASLHLPKLSITGTYDLKSVLQGLGITKVFVSNAGADLSGVTEEAP
 LKLSKAVHKAVLTIDEKGTAAAGAMFLEAIPMSIPPEVKFNKPFVFLMIDQNTKSPLFMGKVVNPTQK

TRTRPLEQKLISEEDLAANDILDYKDDDDKV

Chromatograms: https://cdn.origene.com/chromatograms/mk6305_g09.zip

Restriction Sites: SgfI-MluI

Cloning Scheme:



ACCN: NM_001002236

ORF Size: 1254 bp

OTI Disclaimer: The molecular sequence of this clone aligns with the gene accession number as a point of reference only. However, individual transcript sequences of the same gene can differ through naturally occurring variations (e.g. polymorphisms), each with its own valid existence. This clone is substantially in agreement with the reference, but a complete review of all prevailing variants is recommended prior to use. [More info](#)

OTI Annotation: This clone was engineered to express the complete ORF with an expression tag. Expression varies depending on the nature of the gene.

Components: The ORF clone is ion-exchange column purified and shipped in a 2D barcoded Matrix tube containing 10ug of transfection-ready, dried plasmid DNA (reconstitute with 100 ul of water).

Reconstitution Method:

1. Centrifuge at 5,000xg for 5min.
2. Carefully open the tube and add 100ul of sterile water to dissolve the DNA.
3. Close the tube and incubate for 10 minutes at room temperature.
4. Briefly vortex the tube and then do a quick spin (less than 5000xg) to concentrate the liquid at the bottom.
5. Store the suspended plasmid at -20°C. The DNA is stable for at least one year from date of shipping when stored at -20°C.

RefSeq: [NM_001002236.3](#)

RefSeq Size: 3513 bp

RefSeq ORF: 1257 bp

Locus ID: 5265

UniProt ID: [P01009](#)

Cytogenetics: 14q32.13

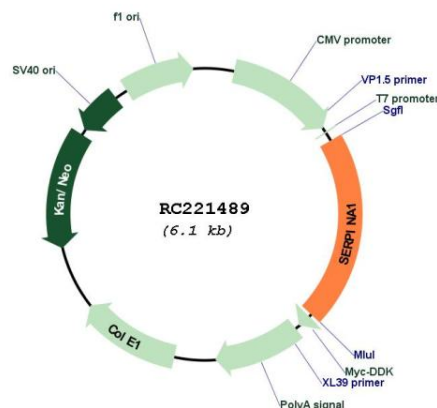
Protein Families: Druggable Genome, ES Cell Differentiation/IPS, Secreted Protein

Protein Pathways: Complement and coagulation cascades

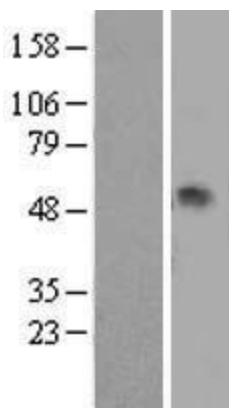
MW: 46.7 kDa

Gene Summary: The protein encoded by this gene is a serine protease inhibitor belonging to the serpin superfamily whose targets include elastase, plasmin, thrombin, trypsin, chymotrypsin, and plasminogen activator. This protein is produced in the liver, the bone marrow, by lymphocytic and monocytic cells in lymphoid tissue, and by the Paneth cells of the gut. Defects in this gene are associated with chronic obstructive pulmonary disease, emphysema, and chronic liver disease. Several transcript variants encoding the same protein have been found for this gene. [provided by RefSeq, Aug 2020]

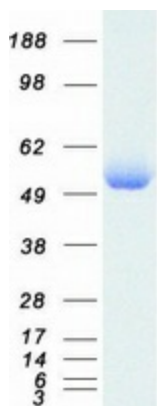
Product images:



Circular map for RC221489



Western blot validation of overexpression lysate (Cat# [LY426858]) using anti-DDK antibody (Cat# [TA50011-100]). Left: Cell lysates from untransfected HEK293T cells; Right: Cell lysates from HEK293T cells transfected with [RC225668] using transfection reagent MegaTran 2.0 (Cat# [TT210002]).



Coomassie blue staining of purified SERPINA1 protein (Cat# [TP321489]). The protein was produced from HEK293T cells transfected with SERPINA1 cDNA clone (Cat# RC221489) using MegaTran 2.0 (Cat# [TT210002]).