

## Product datasheet for RC221290

### MYADM (NM\_001020818) Human Tagged ORF Clone

#### Product data:

Product Type: Expression Plasmids  
 Product Name: MYADM (NM\_001020818) Human Tagged ORF Clone  
 Tag: Myc-DDK  
 Symbol: MYADM  
 Synonyms: SB135  
 Mammalian Cell Selection: Neomycin  
 Vector: pCMV6-Entry (PS100001)  
 E. coli Selection: Kanamycin (25 ug/mL)  
 ORF Nucleotide Sequence: >RC221290 representing NM\_001020818  
 Red=Cloning site Blue=ORF Green=Tags(s)

TTTTGTAATACGACTCACTATAGGGCGGCCGGAATTCGTCGACTGGATCCGGTACCGAGGAGATCTGCC  
 GCC**CGATCGCC**

ATGCCAGTGACGGTAACCCGCACCACCATCACAACCACCACGACGTCATCTTCGGGCCTGGGGTCCCCCA  
 TGATCGTGGGGTCCCCTCGGGCCCTGACACAGCCCCTGGGTCTCCTTCGCCTGCTGCAGCTGGTGTCTAC  
 CTGCGTGGCCTTCTCGTGGTGGCTAGCGTGGCGCCTGGACGGGGTCCATGGGCAACTGGTCCATGTTCC  
 ACCTGGTGCTTCTGCTTCTCCGTGACCCCTGATCATCCTCATCGTGGAGCTGTGCGGGCTCCAGGCCCGCT  
 TCCCCCTGTCTTGCGCAACTTCCCATCACCTTCGCCTGCTATGCGGCCCTTCTGCCTCTCGGCCTC  
 CATCATCTACCCACCACCTATGTCCAGTTCCTGTCCCACGGCCGTTTCGGGGACCACGCCATCGCCGCC  
 ACCTTCTTCTCCTGCATCGCGTGTGTGGCTTACGCCACCGAAGTGGCCTGGACCCGGGCCCGCCGGCGG  
 AGATCACTGGCTATATGGCCACCGTACCCGGGCTGCTGAAGGTGCTGGAGACCTTCGTTGCCTGCATCAT  
 CTTTCGCGTTTCATCAGCGACCCCAACCTGTACCAGCACCAGCCGGCCCTGGAGTGGTGCCTGGCGGTGAC  
 GCCATCTGCTTTCATCCTAGCGGCCATCGCCATCCTGTGAACCTGGGGGAGTGCACCAACGTGCTACCCA  
 TCCCCTTCCCAGCTTCTGTGCGGGCTGGCCTTGCTGTCTGTCTCCTCTATGCCACCGCCCTTGTCTC  
 CTGGCCCTCTACCAGTTCGATGAGAAGTATGGCGCCAGCCTCGCGCTCGAGAGATGTAAGCTGCAGC  
 CGCAGCCATGCCTACTACGTGTGCTGCTGGACCGCCACTGGCTGTGGCCATCCTGACGGCCATCAACC  
 TACTGGCGTATGTGGCTGACCTGGTGCCTCTGCCACCTGGTTTTTGTCAAGGTC

**ACGCGT**ACGCGGCCGCTCGAGCAGAAACTCATCTCAGAAGAGGATCTGGCAGCAAATGATATCCTGGATT  
 ACAAGGATGACGACGATAAGGTTTAA



[View online »](#)

**Protein Sequence:** >RC221290 representing NM\_001020818  
Red=Cloning site Green=Tags(s)

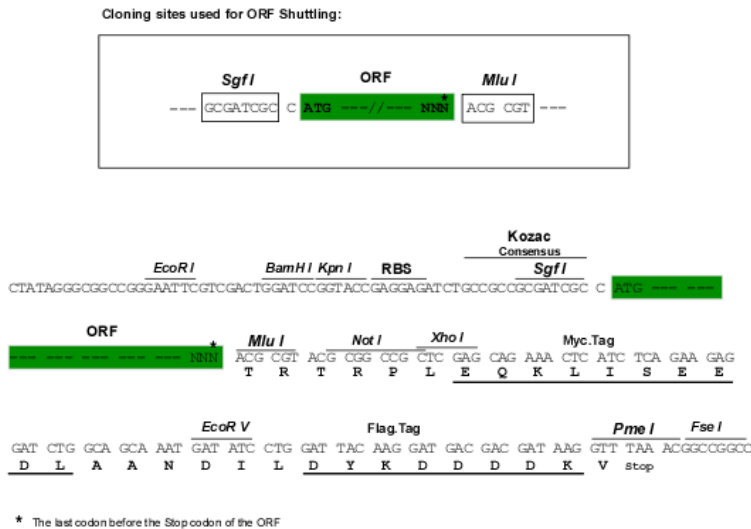
MPVTVTRTTITTTTTSSSGLGSPMIVGSPRALTQPLGLLRLLQLVSTCVAFSLVASVGAWTGSMGNWSMF  
 TWCFCFSVTLIILIVELCGLQARFPLSWRNFPITFACYAALFCLSASIIYPTTYVQFLSHGRSRDHAIAA  
 TFFSCIACVAYATEVAWTRARPEITGYMATVPGLLKVLETFVACIIFAFISDPNLYQHQPALWCVAVY  
 AICFILAAIAILLNLGECTNVLPPIFPFSFLSGLALLSVLLYATALVLWPLYQFDEKYGGQPRRSRDVSCS  
 RSHAYYCAWDRRLAVAILTAINLLAYVADLVHSAHLVFVKV

TRTRPLEQKLISEEDLAANDILDYKDDDDKV

**Chromatograms:** [https://cdn.origene.com/chromatograms/mk8076\\_a10.zip](https://cdn.origene.com/chromatograms/mk8076_a10.zip)

**Restriction Sites:** SgfI-MluI

**Cloning Scheme:**



**ACCN:** NM\_001020818

**ORF Size:** 966 bp

**OTI Disclaimer:** The molecular sequence of this clone aligns with the gene accession number as a point of reference only. However, individual transcript sequences of the same gene can differ through naturally occurring variations (e.g. polymorphisms), each with its own valid existence. This clone is substantially in agreement with the reference, but a complete review of all prevailing variants is recommended prior to use. [More info](#)

**OTI Annotation:** This clone was engineered to express the complete ORF with an expression tag. Expression varies depending on the nature of the gene.

**Components:** The ORF clone is ion-exchange column purified and shipped in a 2D barcoded Matrix tube containing 10ug of transfection-ready, dried plasmid DNA (reconstitute with 100 ul of water).

**Reconstitution Method:**

1. Centrifuge at 5,000xg for 5min.
2. Carefully open the tube and add 100ul of sterile water to dissolve the DNA.
3. Close the tube and incubate for 10 minutes at room temperature.
4. Briefly vortex the tube and then do a quick spin (less than 5000xg) to concentrate the liquid at the bottom.
5. Store the suspended plasmid at -20°C. The DNA is stable for at least one year from date of shipping when stored at -20°C.

**RefSeq:** [NM\\_001020818.2](#), [NP\\_001018654.1](#)

**RefSeq Size:** 3243 bp

**RefSeq ORF:** 969 bp

**Locus ID:** 91663

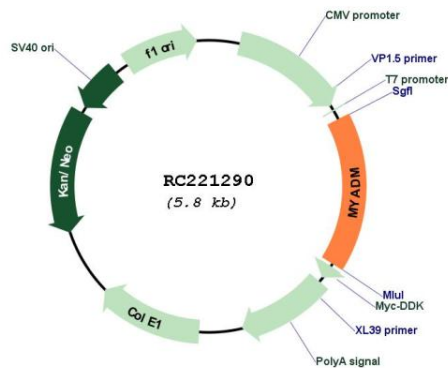
**UniProt ID:** [Q96S97](#)

**Cytogenetics:** 19q13.42

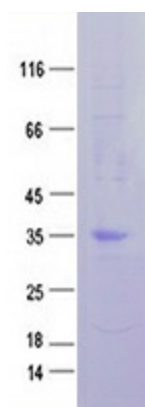
**Protein Families:** Transmembrane

**MW:** 35.1 kDa

**Product images:**



Circular map for RC221290



Coomassie blue staining of purified MYADM protein (Cat# [TP321290]). The protein was produced from HEK293T cells transfected with MYADM cDNA clone (Cat# RC221290) using MegaTran 2.0 (Cat# [TT210002]).