

## Product datasheet for **RC221037**

### **ABCG1 (NM\_207629) Human Tagged ORF Clone**

#### **Product data:**

Product Type:	Expression Plasmids
Product Name:	ABCG1 (NM_207629) Human Tagged ORF Clone
Tag:	Myc-DDK
Symbol:	ABCG1
Synonyms:	ABC8; WHITE1
Mammalian Cell Selection:	Neomycin
Vector:	pCMV6-Entry (PS100001)
E. coli Selection:	Kanamycin (25 ug/mL)



[View online »](#)

**ORF Nucleotide Sequence:**

>RC221037 representing NM\_207629  
 Red=Cloning site Blue=ORF Green=Tags(s)

TTTTGTAATACGACTCACTATAGGGCGGCCGGGAATTCGTCGACTGGATCCGGTACCGAGGAGATCTGCC  
 GCC**CGGATCGCC**

ATGATCATGAGGCTTCCCAGCCACATGGAACATGCCAGCAGTTACTCTGCAGAGATGACGGAGCCCA  
 AGTCGGTGTGTGCTCGGTGGATGAGGTGGTCCAGCAACATGGAGGCCACTGAGACGGACCTGCTGAA  
 TGGACATCTGAAAAAGTAGATAATAACCTCACGGAAGCCAGCGCTTCTCCTCCTTGCCTCGGAGGGCA  
 GCTGTGAACATTGAATTCAGGGACCTTTCTATTTCGGTTCCTGAAGGACCTGGTGGAGGAAGAAAGGAT  
 ACAAGACCCTCCTGAAAGGAATTTCCGGGAAGTTCAATAGTGGTGGTGGCCATTATGGGTCTTTC  
 CGGGGCCGGGAAGTCCACGCTGATGAACATCCTGGCTGGATACAGGGAGACGGGCATGAAGGGGGCCGTC  
 CTCATCAACGGCCTGCCCGGGACCTGCGCTGCTTCCGGAAGGTGCTGCTACATCATGCAGGATGACA  
 TGCTGCTGCCGATCTCACTGTGCAGGAGGCCATGATGGTGTCCGCACATCTGAAGCTTCAGGAGAAGGA  
 TGAAGGCAGAAGGAAATGGTCAAGGAGATACTGACAGCGCTGGGCTTGTGCTTTGCGCCAACACGCGG  
 ACCGGGAGCCTGTGAGGTGGTACAGCGCAAGCGCCTGGCCATCGCGCTGGAGCTGGTGAACAACCCCTCCAG  
 TCATGTTCTTCGATGAGCCACCAGCGGCCTGGACAGCGCCTCCTGCTTCCAGGTGGTCTCGCTGATGAA  
 AGGGCTCGCTCAAGGGGGTTCGCTCCATCATTTGCACCATCCACCAGCCCAGCGCCAAACTCTTCGAGCTG  
 TTCGACCAGCTTACGTCCTGAGTCAAGGACAATGTGTGTACCGGGGAAAAGTCTGCAATCTTGTGCCAT  
 ATTTGAGGGATTTGGGTCTGAATGCCAACCTACCACAACCCAGCAGATTTTGTGATGGAGTTGCATC  
 CGGCGAGTACGGTATCAGAACAGTCCGCTGGTGGAGAGCGGTTCCGGAGGGCATGTGTGACTCAGACCAC  
 AAGAGAGACCTCGGGGGTATGCCGAGGTGAACCCTTTTCTTTGGCACCGGCCCTCTGAAGAGGACTCCT  
 CGTCCATGGAAGGCTGCCACAGCTTCTCTGCCAGCTGCCTCACGCAGTTCTGCATCCTCTTCAAGAGGAC  
 CTTCTCAGCATCATGAGGGACTCGGTCTGACACACCTGCGCATCACCTCGCACATTGGGATCGGCCTC  
 CTATTGGCCTGCTGTAATTGGGGATCGGGAACGAAGCCAAGAAGGTCTTGAGCAACTCCGGCTTCTCT  
 TCTTCTCCATGCTGTTCTCATGTTTCGCGGCCCTCATGCCTACTGTTCTGACATTTCCCCTGGAGATGGG  
 AGTCTTTCTTCGGGAACACCTGAACTACTGGTACAGCCTGAAGGCCTACTACCTGGCCAAGACCATGGCA  
 GACGTGCCCTTTCAGATCATGTTCCAGTGGCCTACTGCAGCATCGTGTACTGGATGACGTGCGAGCCGT  
 CCGAGCCGTCGCTTTGTGCTGTTGCCGCGCTGGGCACCATGACCTCCCTGGTGGCACAGTCCCTGGG  
 CCTGCTGATCGGAGCCGCTCCACGTCCCTGCAGGTGGCCACTTTCGTGGGCCAGTGACAGCCATCCCG  
 GTGCTCCTGTTCTCGGGTTCCTCGTCAGCTTCGACACCATCCCCAGTACCTACAGTGGATGTCCTACA  
 TCTCCTATGTGAGGATGGGTTCCGAAGGGTATCCTCTCCATCTATGGCTTAGACCGGGAAGATCTGCA  
 CTGTGACATCGACGAGACGTGCCACTTCCAGAAGTCCGAGGCCATCCTGCGGGAGCTGGAGCTGGAAAT  
 GCCAAGCTGTACCTGGACTTCATCGTACTCGGGATTTTCTTATCTCCCTCCGCCTCATTGCCTATTTTG  
 TCCTCAGGTACAAAATCCGGGCAGAGAGG

**ACGCGT**ACGCGGCCGCTCGAGCAGAACTCATCTCAGAAGAGGATCTGGCAGCAATGATATCCTGGATT  
 ACAAGGATGACGACGATAAGGTTTAA

**Protein Sequence:** >RC221037 representing NM\_207629  
Red=Cloning site Green=Tags(s)

```
MIMRLPQPHGTNASSYSAEMTEPKSVCSVDEVSSNMEATETDLLNGHLKKVDNNL TEAQRFSSLPRRA
AVNIEFRDLSYSVPEGPWRRKKGYKTLKGISGKFNSGELVAIMGPSGAGKSTLMNLAGYRETGMKGAV
LINGLPRDLRCFRKVCYIMQDDMLLPHLTVQEAMMVS AHLKLQEKDEGRREMVKEILTALGLLSCANTR
TGSLSGGQRKRLAIALELVNPPVMFFDEPTSGLDSASCFQVVS LMKGLAQGGRSIICTIHQPSAKLFEL
FDQLYVLSQGQCVYRGKVCNLVPYLRDLGLNCP TYHNPADFVMEVASGEYGDQNSRLVRVREGMCDSDH
KRD LGGDAEVNPF LWHRPSEEDSSSMEGCHSFSASCLTQFCILFKRTFLSIMRDSVLTHLRITSHIGIGL
LIGLLYLIGNEAKKVL SNSGLFFSMLFLMFAALMPTV LTFPLEMGVFLREHLNYWYSLKAYYLAKTMA
DVPFQIMFPVAYCSIVYWMTSQPSDAVRFV LFAALGTMTSLVAQSLGLLIGAASTSLQVATFVGPVTAIP
VLLFSGFFV SFDTIPTYLQWMSYISYVRYGFEGVILSIYGLDREDLHCDIDETCHFQKSEAILRELDVEN
AKLYLDFIVLGIFFISLR LIAYFVLR YKIRAER
```

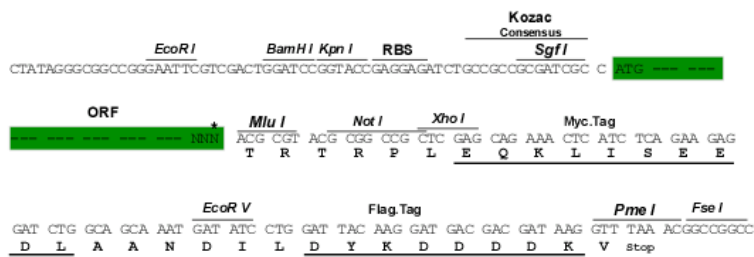
TRTRPLEQKLI SEEDLAANDILDYKDDDDKV

**Chromatograms:** [https://cdn.origene.com/chromatograms/mk8072\\_a05.zip](https://cdn.origene.com/chromatograms/mk8072_a05.zip)

**Restriction Sites:** SgfI-MluI

**Cloning Scheme:**

Cloning sites used for ORF Shuttling:



\* The last codon before the Stop codon of the ORF

**ACCN:** NM\_207629

**ORF Size:** 1989 bp

**OTI Disclaimer:** The molecular sequence of this clone aligns with the gene accession number as a point of reference only. However, individual transcript sequences of the same gene can differ through naturally occurring variations (e.g. polymorphisms), each with its own valid existence. This clone is substantially in agreement with the reference, but a complete review of all prevailing variants is recommended prior to use. [More info](#)

**OTI Annotation:** This clone was engineered to express the complete ORF with an expression tag. Expression varies depending on the nature of the gene.

**Components:** The ORF clone is ion-exchange column purified and shipped in a 2D barcoded Matrix tube containing 10ug of transfection-ready, dried plasmid DNA (reconstitute with 100 ul of water).

**Reconstitution Method:**

1. Centrifuge at 5,000xg for 5min.
2. Carefully open the tube and add 100ul of sterile water to dissolve the DNA.
3. Close the tube and incubate for 10 minutes at room temperature.
4. Briefly vortex the tube and then do a quick spin (less than 5000xg) to concentrate the liquid at the bottom.
5. Store the suspended plasmid at -20°C. The DNA is stable for at least one year from date of shipping when stored at -20°C.

**RefSeq:** [NM\\_207629.1](#), [NP\\_997512.1](#)

**RefSeq Size:** 2946 bp

**RefSeq ORF:** 1992 bp

**Locus ID:** 9619

**UniProt ID:** [P45844](#)

**Cytogenetics:** 21q22.3

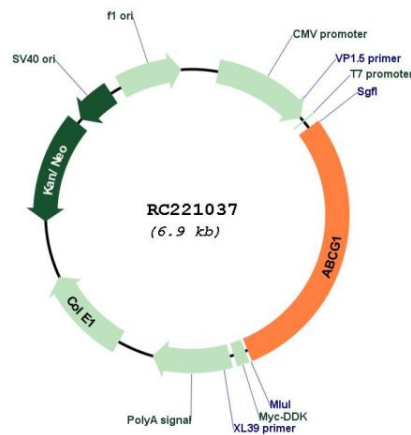
**Protein Families:** Druggable Genome, Transmembrane

**Protein Pathways:** ABC transporters

**MW:** 73.9 kDa

**Gene Summary:** The protein encoded by this gene is a member of the superfamily of ATP-binding cassette (ABC) transporters. ABC proteins transport various molecules across extra- and intra-cellular membranes. ABC genes are divided into seven distinct subfamilies (ABC1, MDR/TAP, MRP, ALD, OABP, GCN20, White). This protein is a member of the White subfamily. It is involved in macrophage cholesterol and phospholipids transport, and may regulate cellular lipid homeostasis in other cell types. Six alternative splice variants have been identified. [provided by RefSeq, Jul 2008]

### Product images:



Circular map for RC221037