

Product datasheet for RC220975

Integrin alpha 3 (ITGA3) (NM_005501) Human Tagged ORF Clone

Product data:

Product Type:	Expression Plasmids
Product Name:	Integrin alpha 3 (ITGA3) (NM_005501) Human Tagged ORF Clone
Tag:	Myc-DDK
Symbol:	Integrin alpha 3
Synonyms:	CD49C; GAP-B3; GAPB3; ILNEB; MSK18; VCA-2; VL3A; VLA3a
Mammalian Cell Selection:	Neomycin
Vector:	pCMV6-Entry (PS100001)
E. coli Selection:	Kanamycin (25 ug/mL)
ORF Nucleotide Sequence:	>RC220975 representing NM_005501 Red=Cloning site Blue=ORF Green=Tags(s)

TTTTGTAATACGACTCACTATAGGGCGGCCGGAATTCGTCGACTGGATCCGGTACCGAGGAGATCTGCC
GCC**CGATCGCC**

ATGGGCCCCGGCCCCAGCCGCGGCCCGGCCACGCCTGATGCTCTGTGCGCTCGCCTTGATGGTGG
CGGCCGGCGGCTGCGTCGTCCTCCGCCTCAACCTGGATACCCGATTCTGGTAGTGAAGGAGCCGGAA
CCCGGGCAGCCTCTTCGGCTACTCGGTGCCCCATCGGCAGACAGAGCGGCAGCAGCGCTACCTGCTC
CTGGCTGGTGCCCCCGGAGCTCGCTGTGCCGATGGCTACACCAACCGGACTGGTGTGTACCTGT
GCCCACTCACTGCCACAAGGATGACTGTGAGCGGATGAACATCACAGTAAAAATGACCCTGGCCATCA
CATTATTGAGGACATGTGGCTTGGAGTGACTGTGCCAGCCAGGGCCCTGCAGGCAGAGTTCTGGTCTGT
GCCACCCTACACCCAGGTGCTGTGGTCAGGGTCAGAAGACCAGCGGCCATGGTGGGCAAGTGCTACG
TGCGAGGCAATGACCTAGAGCTGGACTCCAGTGATGACTGGCAGACCTACCACAACGAGATGTGCAATAG
CAACACAGACTACCTGGAGACGGGCATGTGCCAGCTGGGACCAGCGGTGGCTTACCCAGAACACTGTG
TACTTCGGCGCCCCGGTGCCTACAACCTGGAAAGGAAACAGCTACATGATTACAGCGCAAGGAGTGGGACT
TATCTGAGTATAGTTACAAGGACCCAGAGGACCAAGGAAACCTCTATATTGGGTACACGATGCAGGTAGG
CAGCTTCATCCTGCACCCAAAAACATCACCATTGTGACAGGTGCCCCACGGCACGACATATGGGCGCG
GTGTTCTTGCTGAGCCAGGAGGCGGCGGAGACCTGCGGAGGAGGAGGTGCTGGAGGGCTCGCAGGTGG
GCGCCTATTTTGGCAGCGCCATTGCCCTGGCAGACCTGAACAATGATGGGTGGCAGGACCTCCTGGTGGG
CGCCCCCTACTACTTTGAGAGGAAAGAGGAAGTGGGGGTGCCATCTATGTCTTTCATGAACCAGGCGGGA
ACCTCCTTCCCTGCTCACCCCTCACTCCTTCTTCATGGCCCCAGTGGCTCTGCCTTTGGTTTATCTGTGG
CCAGCATTGGTGACATCAACCAGGATGGATTTCCAGGATATTGCTGTGGGAGCTCCGTTTGAAGGCTTGGG
CAAAGTGACATCTATCACAGTAGCTCTAAGGGGCTCCTCAGACAGCCCCAGCAGGTAATCCATGGAGAG
AAGCTGGGACTGCCTGGGTTGGCCACCTTCGGCTATTCCCTCAGTGGGCAGATGGATGTGGATGAGAAT
TCTACCCAGACCTTCTAGTGGGAAGCCTGTGAGCCACATTGTGCTGCTGCGGGCCCGCCCGTCATCAA
CATCGTCCACAAGACCTTGGTGCCAGGCCAGCTGTGCTGGACCTGCACCTTTCACGGCCACCTCTTGT



[View online »](#)

```
GTGCAAGTGGAGCTGTGCTTTGCTTACAACCAGAGTGCCGGGAACCCCAACTACAGGCGAAACATCACCC
TGGCCTACACTCTGGAGGCTGACAGGGACCGCCGGCCGCCCGGCTCCGCTTTGCCGGCAGTGAGTCCGC
TGTCTTCCACGGCTTCTTCTCCATGCCCGAGATGCGCTGCCAGAAGCTGGAGCTGCTCCTGATGGACAAC
CTCCGTGACAACTCCGCCCATCATCATCTCCATGAAGTACTCTTTACCTTTGCCGGATGCCCGATCGCC
CCCGGCTGGGGCTGCGGTCCCTGGACGCCTACCGATCCTCAACCAGGCACAGGCTCTGGAGAACCACAC
TGAGGTCCAGTTCAGAAGGAGTGC GGCCCTGACAACAAGTGTGAGAGCAACTTCAGATGCGGGCAGCC
TTCGTGTACAGACAGCAGCAGAAGCTGAGCAGGCTCCAGTACAGCAGAGACGTCGGAAATTGCTCCTGA
GCATCAACGTGACGAACACCCGGACCTCGGAGCGCTCCGGGGAGGACGCCACAGGGCGCTGCTCACCCCT
GGTGGTGCCTCCCGCCCTGCTGTGTCTCAGTGCGCCCCCGGGCCCTGCCAAGCTAATGAGACCATC
TTTTGCGAGCTGGGAACCCCTTCAAACGGAACCAGAGGATGGAGCTGCTCATCACCTTTGAGGTATCG
GGGTGACCCTGCACACAAGGGACCTTCAGGTGCAGCTGCAGCTCTCCACGTCGAGTACCAGGACAACCT
GTGGCCCATGATCCTCACTCTGCTGGTGGACTATACACTCCAGACCTCGTTAGCATGGTAAATCACCGG
CTACAAAGCTTCTTTGGGGGACAGTGTGGTGGTCTGGCATGAAAAGTGGAGGATGTAGGAAGCC
CCCTCAAGTATGAATCCAGGTGGGCCAATGGGGAGGGGCTGGTGGGCTGGGGACCCCTGGTCTTAGG
TCTGGAGTGGCCCTACGAAGTCAGCAATGGCAAGTGGCTGCTGTATCCACGGAGATCACCGTCCATGGC
AATGGGTCTGGCCCTGCCGACCACCTGGAGACCTTATCAACCCCTCAACCTCACTCTTTCTGACCCTG
GGGACAGGCCATCATCCCCACAGCGCAGGCGGGCAGAGCTGGATCCAGGGGGAGGCCAGGGCCCCCACC
TGTCACTCTGGCTGCTGCCAAAAAGCCAAGTCTGAGACTGTGCTGACCTGTGCCACAGGGCGTGCCAC
TGTGTGTGGCTAGAGTGGCCATCCCTGATGCCCCGTTGTACCAACGTCAGTGTGAAGGCACGAGTGT
GGAACAGCACCTTCATCGAGGATTACAGAGACTTTGACCGAGTCCGGGTAATGGCTGGGCTACCCATT
CCTCCGAACCAGCATCCCACCATCAACATGGAGAACAAGACCAGTGGTCTCTGTGGACATTGACTCG
GAGCTGGTGGAGGAGCTGCCGGCCGAAATCGAGCTGTGGCTGGTGTGGTGGCCGTGGGTGCAGGGCTGC
TGCTGTGGGGCTGATCATCTCTCTGCTGTGGAAGTGTGACTTCTTTAAGCGGACCCGCTATTATCAGAT
CATGCCCAAGTACCACGACGTGCCGATCCGGGAGGAGGAGCGCTACCCACCTCCAGGGAGACCCCTGCC
ACCAAGAAGCACTGGGTGACCAGCTGGCAGACTCGGGACCAATACTAC
```

ACGCGTACGCGGCCGCTCGAGCAGAACTCATCTCAGAAGAGGATCTGGCAGCAATGATATCCTGGATT
ACAAGGATGACGACGATAAGGTTTAA

Protein Sequence:

>RC220975 representing NM_005501
Red=Cloning site Green=Tags(s)

```
MGPGPSRAPRAPRLMLCALALMVAAGGCVVSAFNLDTRFLVVKEAGNPGSLFGYSVALHRQTERQQRYLL
LAGAPRELAVPDGYTNRGTAVYLCPLTAHKDDCERMNITVKNDPGHHIIEDMWLGVTVASQGPAGRVLVC
AHRYTQVLWSGSEDQRRMVGKCYVRGNLELDSSDDWQTYHNEMCNSNTDYLETGMCQLGTSGGFTQNTV
YFGAPGAYNWKNSYMIQRKEWDLSEYSYKDPEDQGNLYIGYTMQVGSFILHPKNITIVTGAPRHRHMGA
VFLLSQEAGGDLRRRQVLEGSQVAYFGSAIALADLNNDGWQDLLVGAPYYFERKEEVGGAIYVFMNQAG
TSFPAHPSLLLHGPGSFAFGLSVASIGDINQDGFQDIIVGAPFEGLGKVVYIYHSSSKGLLRQPQQVIHGE
KLGLPGLATFGYLSGQMDVDENFYPDLLVGLSDHIVLLRARPVINIVHKTLVPRPAVLDPALCTATSC
VQVELCFAYNQSAGNPNYRRNITLAYTLEADRRRPPRLRFAGSESAVFHGGFFSMPMERCQKLELLMDN
LRDKLRPIIISMNYSPLRMPDRPRLGLRSLDAYPILNQAQALENHTEVQFQKECGPDNKCENLQMRAA
FVSEQQQKLSRLQYSRDVRKLLL SINVTNTRTSERSGEDAHEALLTLVPPALLLSSVRPPGACQANETI
FCELGPNPFRNRQRMELLITFEVIGVTLHTRDLQVQLQLSTSSHQDNLWPMILTLLVDYTLQTSLSMVNHR
LQSF FGGTVMGESGMKTVEDVGSPLKYEYFQVGMGEGLVGLGTLVLGLEWPYEVSNKWLLYPTEITVHG
NGSWPCRPPGDLINPLNLTLSDPDRPSSPQRRRRQLDPGGGQGPPPVTLAAAKKAKSETVLTATGRAH
CWWLECPIDAPVVTVNVTVKARVWNSTFIEDYRDFDRVRVNGWATLFLRTSIPTINMENKTTWFSVDIDS
ELVEELPAEIELWLVLVAVGAGLLLLGLIILLLWKCDFKTRTRYQIMPKYHAVRIREEERYPPPGSTLP
TKKHVTSWQTRDQYY
```

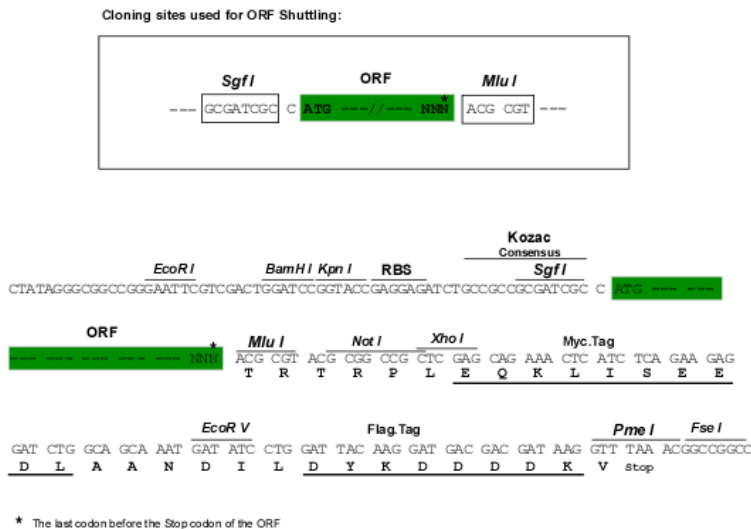
TRTRPLEQKLISEEDLAANDILDYKDDDDKV

Chromatograms:

https://cdn.origene.com/chromatograms/mk6838_g03.zip

Restriction Sites: SgfI-MluI

Cloning Scheme:



ACCN: NM_005501

ORF Size: 3198 bp

OTI Disclaimer: The molecular sequence of this clone aligns with the gene accession number as a point of reference only. However, individual transcript sequences of the same gene can differ through naturally occurring variations (e.g. polymorphisms), each with its own valid existence. This clone is substantially in agreement with the reference, but a complete review of all prevailing variants is recommended prior to use. [More info](#)

OTI Annotation: This clone was engineered to express the complete ORF with an expression tag. Expression varies depending on the nature of the gene.

Components: The ORF clone is ion-exchange column purified and shipped in a 2D barcoded Matrix tube containing 10ug of transfection-ready, dried plasmid DNA (reconstitute with 100 ul of water).

Reconstitution Method:

1. Centrifuge at 5,000xg for 5min.
2. Carefully open the tube and add 100ul of sterile water to dissolve the DNA.
3. Close the tube and incubate for 10 minutes at room temperature.
4. Briefly vortex the tube and then do a quick spin (less than 5000xg) to concentrate the liquid at the bottom.
5. Store the suspended plasmid at -20°C. The DNA is stable for at least one year from date of shipping when stored at -20°C.

RefSeq: [NM_005501.2](#)

RefSeq Size: 4495 bp

RefSeq ORF: 3201 bp

Locus ID: 3675

Cytogenetics: 17q21.33

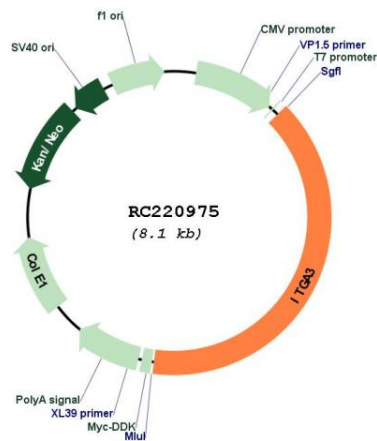
Protein Families: Druggable Genome, Transmembrane

Protein Pathways: Arrhythmogenic right ventricular cardiomyopathy (ARVC), Dilated cardiomyopathy, ECM-receptor interaction, Focal adhesion, Hematopoietic cell lineage, Hypertrophic cardiomyopathy (HCM), Pathways in cancer, Regulation of actin cytoskeleton, Small cell lung cancer

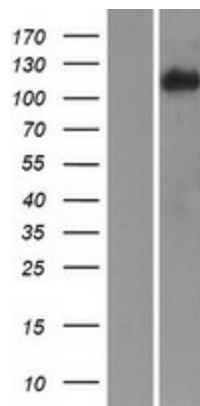
MW: 118.79 kDa

Gene Summary: The gene encodes a member of the integrin alpha chain family of proteins. Integrins are heterodimeric integral membrane proteins composed of an alpha chain and a beta chain that function as cell surface adhesion molecules. The encoded preproprotein is proteolytically processed to generate light and heavy chains that comprise the alpha 3 subunit. This subunit joins with a beta 1 subunit to form an integrin that interacts with extracellular matrix proteins including members of the laminin family. Expression of this gene may be correlated with breast cancer metastasis. [provided by RefSeq, Oct 2015]

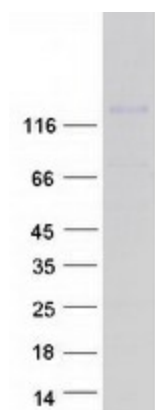
Product images:



Circular map for RC220975



Western blot validation of overexpression lysate (Cat# [LY417256]) using anti-DDK antibody (Cat# [TA50011-100]). Left: Cell lysates from untransfected HEK293T cells; Right: Cell lysates from HEK293T cells transfected with RC220975 using transfection reagent MegaTran 2.0 (Cat# [TT210002]).



Coomassie blue staining of purified ITGA3 protein (Cat# [TP320975]). The protein was produced from HEK293T cells transfected with ITGA3 cDNA clone (Cat# RC220975) using MegaTran 2.0 (Cat# [TT210002]).