

Product datasheet for RC220888

SOX17 (NM_022454) Human Tagged ORF Clone

Product data:

Product Type:	Expression Plasmids
Product Name:	SOX17 (NM_022454) Human Tagged ORF Clone
Tag:	Myc-DDK
Symbol:	SOX17
Synonyms:	VUR3
Mammalian Cell Selection:	Neomycin
Vector:	pCMV6-Entry (PS100001)
E. coli Selection:	Kanamycin (25 ug/mL)
ORF Nucleotide Sequence:	>RC220888 representing NM_022454 Red=Cloning site Blue=ORF Green=Tags(s)

TTTTGTAATACGACTCACTATAGGGCGGCCGGAATTCGTCGACTGGATCCGGTACCGAGGAGATCTGCC
GCC**CGATCGCC**

ATGAGCAGCCGGATGCGGGATACGCCAGTGACGACCAGAGCCAGACCCAGAGCGCGCTGCCCGGGTGA
TGGCCGGGCTGGGCCCTGCCCTGGGCCGAGTCGCTGAGCCCCATCGGGGACATGAAGGTGAAGGGCGA
GGCGCCGGCAACAGCGGAGCACCGGCCGGGGCCGCGGGCCGAGCAAGGGCGAGTCCCGTATCCGGCGG
CCGATGAACGCTTTCATGGTGTGGGCTAAGGACGAGCGCAAGCGGCTGGCGCAGCAGAATCCAGACTGC
ACAACGCCGAGTTGAGCAAGATGCTGGCAAGTCTGGAAGGCGCTGACGCTGGCGGAGAAGCGGCCCTT
CGTGGAGGAGGCAGAGCGGCTGCGCGTGCAGCACATGCAGGACCACCCAACTACAAGTACCGGCCGCGG
CGGCGCAAGCAGGTGAAGCGGCTGAAGCGGGTGGAGGGCGGCTTCTGACGCGCCTGGCTGAGCCGAGG
CGGCCGCGCTGGGCCCGAGGGCGGCCGCTGGCCATGGACGGCCTGGGCTCCAGTTCCCCGAGCAGGG
CTTCCCCGCCGGCCCGCGCTGCTGCCTCCGCACATGGGCGGCCACTACCGGACTGCCAGAGTCTGGGC
GCGCTCCGCTCGACGGTACCCGTTGCCACGCCGACACGTCCCCGCTGGACGGCGTGGACCCCGACC
CGGCTTCTTCGCGCCCGATGCCCGGGACTGCCCGCGGCCGACCTACAGCTACGCGCAGGTCTC
GGACTACGCTGGCCCCCGGAGCCTCCCGCGGTCCCATGCACCCCGACTCGGCCAGAGCCCGCGGGT
CCCTCGATTCCGGGCTCCTGGCGCCACCCAGCGCCCTCACGTGTAACGGCGGATGGGCTCGCCCG
GGCGGGCGGGCGGGCGCGGCTTCCAGATGCAGCCGCAACACCAGCACCAGCACCAGCACCAGCACC
CCCCGGGCCCGGACAGCGTCCGCCCTCCGGAGGCACTGCCCTGCCGGGACGGCACGGACCCCACTCAG
CCCCCGAGCTCCTCGGGAGGTGGACCGACGGAATTTGAACAGTATCTGCACTTCGTGTGCAAGCCTG
AGATGGGCTCCCTACCAGGGCATGACTCCGGTGTGAATCTCCCCGACAGCCACGGGGCCATTTCTC
GGTGGTGTCCGACGCCAGCTCCGCGGTATATTACTGCAACTATCCTGACGTG

ACGCGTACGCGGCCGCTCGAGCAGAACTCATCTCAGAAGAGGATCTGGCAGCAAATGATATCCTGGATT
ACAAGGATGACGACGATAAGGTTTAA



[View online >](#)

Protein Sequence: >RC220888 representing NM_022454
Red=Cloning site Green=Tags(s)

MSSPDAGYASDDQSQTQSALPAVMAGLGPCPWAESLSPIGDMKVKGEAPANSAPAGAAGRAKGESRIRR
 PMNAFMVWAKDERKRLAQQNPDLHNAELSKMLGKSWKALTLAEKRPFVEEAERLRVQHMQDHPNYKYRPR
 RRKQVKRLKRVEGGFLHGLAEPQAAALGPEGGRVAMDGLGLQFPEQGFPAGPPLLPPHMGGHYRDCQSLG
 APPLDGYPLPTPDTSPLDGVDPDAFFAAPMPGDPCAAGTYSYAQVSDYAGPPEPPAGMPHPRLGPEPAG
 PSIPGLLAPPSALHVYYGAMGSPGAGGGRGFMQPQHQQHQQHHPGPGQPSPPPEALPCRDGTDPSQ
 PAELLGEVDRTEFEQYLHFVCKPEMGLPYQHDGSGVNL PDSHGAISSVSDASSAVYYCNYPDV

TRTRPLEQKLISEEDLAANDILDYKDDDDKV

Chromatograms: https://cdn.origene.com/chromatograms/mk6216_g06.zip

Restriction Sites: SgfI-MluI

Cloning Scheme:



* The last codon before the Stop codon of the ORF

ACCN: NM_022454

ORF Size: 1242 bp

OTI Disclaimer: The molecular sequence of this clone aligns with the gene accession number as a point of reference only. However, individual transcript sequences of the same gene can differ through naturally occurring variations (e.g. polymorphisms), each with its own valid existence. This clone is substantially in agreement with the reference, but a complete review of all prevailing variants is recommended prior to use. [More info](#)

OTI Annotation: This clone was engineered to express the complete ORF with an expression tag. Expression varies depending on the nature of the gene.

Components: The ORF clone is ion-exchange column purified and shipped in a 2D barcoded Matrix tube containing 10ug of transfection-ready, dried plasmid DNA (reconstitute with 100 ul of water).

Reconstitution Method:

1. Centrifuge at 5,000xg for 5min.
2. Carefully open the tube and add 100ul of sterile water to dissolve the DNA.
3. Close the tube and incubate for 10 minutes at room temperature.
4. Briefly vortex the tube and then do a quick spin (less than 5000xg) to concentrate the liquid at the bottom.
5. Store the suspended plasmid at -20°C. The DNA is stable for at least one year from date of shipping when stored at -20°C.

RefSeq: [NM_022454.4](#)

RefSeq Size: 1853 bp

RefSeq ORF: 1245 bp

Locus ID: 64321

UniProt ID: [Q9H6I2](#)

Cytogenetics: 8q11.23

Domains: HMG

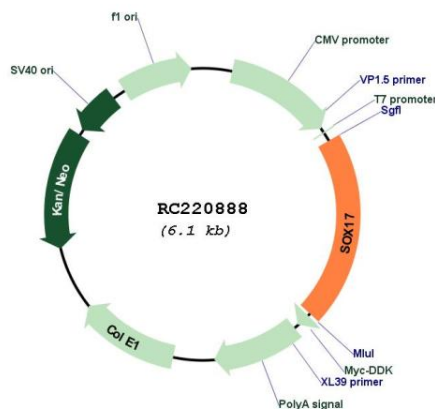
Protein Families: Transcription Factors

Protein Pathways: Wnt signaling pathway

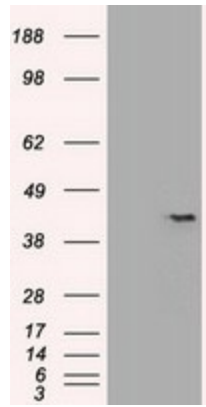
MW: 43.9 kDa

Gene Summary: This gene encodes a member of the SOX (SRY-related HMG-box) family of transcription factors involved in the regulation of embryonic development and in the determination of the cell fate. The encoded protein may act as a transcriptional regulator after forming a protein complex with other proteins. [provided by RefSeq, Jul 2008]

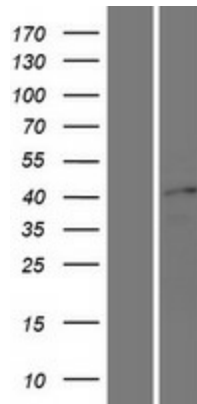
Product images:



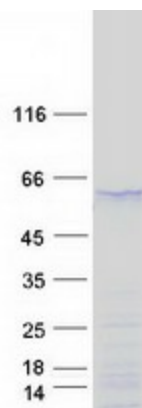
Circular map for RC220888



HEK293T cells were transfected with the pCMV6-ENTRY control (Cat# [PS100001], Left lane) or pCMV6-ENTRY SOX17 (Cat# RC220888, Right lane) cDNA for 48 hrs and lysed. Equivalent amounts of cell lysates (5 ug per lane) were separated by SDS-PAGE and immunoblotted with anti-SOX17 (Cat# [TA500044]). Positive lysates [LY411669] (100ug) and [LC411669] (20ug) can be purchased separately from OriGene.



Western blot validation of overexpression lysate (Cat# [LY411669]) using anti-DDK antibody (Cat# [TA50011-100]). Left: Cell lysates from untransfected HEK293T cells; Right: Cell lysates from HEK293T cells transfected with RC220888 using transfection reagent MegaTran 2.0 (Cat# [TT210002]).



Coomassie blue staining of purified SOX17 protein (Cat# [TP320888]). The protein was produced from HEK293T cells transfected with SOX17 cDNA clone (Cat# RC220888) using MegaTran 2.0 (Cat# [TT210002]).