

Product datasheet for **RC220772**

Factor H (CFH) (NM_001014975) Human Tagged ORF Clone

Product data:

| | |
|---------------------------|--|
| Product Type: | Expression Plasmids |
| Product Name: | Factor H (CFH) (NM_001014975) Human Tagged ORF Clone |
| Tag: | Myc-DDK |
| Symbol: | Factor H |
| Synonyms: | AHUS1; AMBP1; ARMD4; ARMS1; CFHL3; FH; FHL1; HF; HF1; HF2; HUS |
| Mammalian Cell Selection: | Neomycin |
| Vector: | pCMV6-Entry (PS100001) |
| E. coli Selection: | Kanamycin (25 ug/mL) |



[View online »](#)

ORF Nucleotide Sequence:

>RC220772 representing NM_001014975
 Red=Cloning site Blue=ORF Green=Tags(s)

TTTTGTAATACGACTCACTATAGGGCGGCCGGGAATTCGTCGACTGGATCCGGTACCGAGGAGATCTGCC
 GCCGCGATCGCC

ATGAGACTTCTAGCAAAGATTATTTGCCTTATGTTATGGGCTATTTGTGTAGCAGAAGATTGCAATGAAC
 TTCTCCAAGAAGAAATACAGAAATTCGACAGGTTCTGGTCTGACCAACATATCCAGAAGGCACCCA
 GGCTATCTATAAATGCCGCCCTGGATATAGATCTCTGGAAATATAATAATGGTATGCAGGAAGGGAGAA
 TGGGTTGCTCTTAATCCATTAAGGAAATGTCAGAAAAGGCCCTGTGGACATCCTGGAGATACTCCTTTTG
 TACTTTTACCCTTACAGGAGGAAATGTGTTTGAATATGGTGTAAAAGCTGTGTATACATGTAATGAGGG
 GTATCAATTGCTAGGTGAGATTAATTACCGTGAATGTGACACAGATGGATGGACCAATGATATTCCTATA
 TGTGAAGTTGTAAGTGTACCAGTGACAGCACCAGAGAATGGAAAAATTGTCAGTAGTCAATGGAAC
 CAGATCGGGAATACCATTTTGGACAAGCAGTACGGTTTGTATGTAACCTCAGGCTACAAGATTGAAGGAGA
 TGAAGAAATGCATTGTTCCAGACGATGGTTTTTGGAGTAAAGAGAAACCAAAGTGTGTGGAATTTTCATGC
 AAATCCCAGATGTTATAAATGGATCTCCTATATCTCAGAAGATTATTTATAAGGAGAATGAACGATTTT
 AATATAAATGTAACATGGGTTATGAATACAGTGAAGAGGAGATGCTGTATGCACTGAATCTGGATGGCG
 TCCGTTGCCTTATGTGAAGAAAATCATGTGATAATCCTTATATCCAAATGGTACTACTCACCTTTA
 AGGATTAACACAGAAGTGGAGATGAAATCACGTACCAGTGTAGAAATGGTTTTTATCCTGCAACCCGGG
 GAAATACAGCCAAATGCACAAGTACTGGCTGGATACCTGCTCCGAGATGTACCTTGAACCTTGTGATTA
 TCCAGACATTAACATGGAGTCTATATCATGAGAATATGCGTAGACCATACTTTCCAGTAGCTGTAGGA
 AAATATTACTCTATTACTGTGATGAACATTTTGAGACTCCGTCAGGAAGTACTGGGATCACATTCATT
 GCACAAAGATGGATGGTCGCCAGCAGTACCATGCCTCAGAAAATGTTATTTTCCCTTATTTGGAAAATGG
 ATATAATCAAAATCATGGAAGAAAAGTTGTACAGGGTAAATCTATAGACGTTGCCTGCCATCCTGGCTAC
 GCTCTTCCAAAAGCGCAGACCACAGTTACATGTATGGAGAATGGCTGGTCTCCTACTCCCAGATGCATCC
 GTGTCAGCTTTACCCTC

ACGCGTACGCGGCCGCTCGAGCAGAAACTCATCTCAGAAGAGGATCTGGCAGCAAATGATATCCTGGATT
 ACAAGGATGACGACGATAAGGTTTAA

Protein Sequence:

>RC220772 representing NM_001014975
 Red=Cloning site Green=Tags(s)

MRLAKIICLMLWAICVAEDCNELPPRRNTEILTGSWSDQTYPEGTQAIYKCRPGYRSLGNIIMVCRKGE
 WVALNPLRKCQKRPCGHPGDTDFGTFLLTGGNVFEYGVKAVYTCNEGYQLLGEINYRECDTDGWTNDIPI
 CEVVKCLPVTAPENKIVSSAMEPDREYHFGQAVRFVCNSGYKIEGDEEMHCSDDGFWSEKPKCIVEISC
 KSPDVINGSPISQKIIYKENERFYKCNMGYEYSERGDVCTESGWRPLPSCEEKSCDNPYIPNGDYSP
 RIKHRTGDEITYQCRNGFYPATRGNTAKCTSTGWIPAPRCTLKPCDYPDIKHGGLYHENMRRPYFPVAVG
 KYYSYYCDEHFETPSGSYWDHIHCTQDGWSPA VPLRKYFPYLENGYNQNHGRKFVQGSIDVACHPGY
 ALPKAQTIVTCMENGWSPTPRCIRVSFTL

TRTRPLEQKLISEEDLAANDILDYKDDDDKV

Chromatograms:

https://cdn.origene.com/chromatograms/mk6238_b09.zip

Restriction Sites:

Sgfl-Mlul

Cloning Scheme:


ACCN: NM_001014975

ORF Size: 1347 bp

OTI Disclaimer: Due to the inherent nature of this plasmid, standard methods to replicate additional amounts of DNA in E. coli are highly likely to result in mutations and/or rearrangements. Therefore, OriGene does not guarantee the capability to replicate this plasmid DNA. Additional amounts of DNA can be purchased from OriGene with batch-specific, full-sequence verification at a reduced cost. Please contact our customer care team at custsupport@origene.com or by calling 301.340.3188 option 3 for pricing and delivery.

The molecular sequence of this clone aligns with the gene accession number as a point of reference only. However, individual transcript sequences of the same gene can differ through naturally occurring variations (e.g. polymorphisms), each with its own valid existence. This clone is substantially in agreement with the reference, but a complete review of all prevailing variants is recommended prior to use. [More info](#)

OTI Annotation: This clone was engineered to express the complete ORF with an expression tag. Expression varies depending on the nature of the gene.

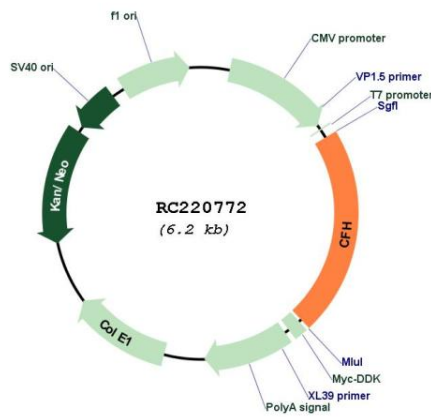
Components: The ORF clone is ion-exchange column purified and shipped in a 2D barcoded Matrix tube containing 10ug of transfection-ready, dried plasmid DNA (reconstitute with 100 ul of water).

- Reconstitution Method:**
1. Centrifuge at 5,000xg for 5min.
 2. Carefully open the tube and add 100ul of sterile water to dissolve the DNA.
 3. Close the tube and incubate for 10 minutes at room temperature.
 4. Briefly vortex the tube and then do a quick spin (less than 5000xg) to concentrate the liquid at the bottom.
 5. Store the suspended plasmid at -20°C. The DNA is stable for at least one year from date of shipping when stored at -20°C.

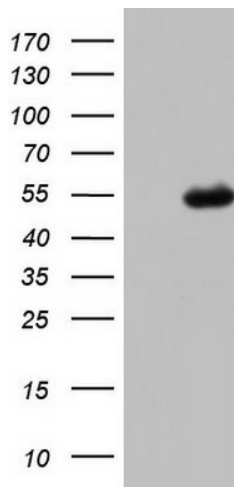
RefSeq: [NM_001014975.2](#)
RefSeq Size: 1702 bp
RefSeq ORF: 1350 bp
Locus ID: 3075
Cytogenetics: 1q31.3
Protein Families: Druggable Genome, Secreted Protein
Protein Pathways: Complement and coagulation cascades
MW: 51.02 kDa

Gene Summary: This gene is a member of the Regulator of Complement Activation (RCA) gene cluster and encodes a protein with twenty short consensus repeat (SCR) domains. This protein is secreted into the bloodstream and has an essential role in the regulation of complement activation, restricting this innate defense mechanism to microbial infections. Mutations in this gene have been associated with hemolytic-uremic syndrome (HUS) and chronic hypocomplementemic nephropathy. Alternate transcriptional splice variants, encoding different isoforms, have been characterized. [provided by RefSeq, Oct 2011]

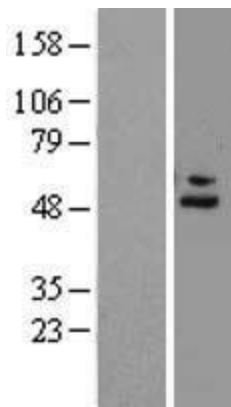
Product images:



Circular map for RC220772



HEK293T cells were transfected with the pCMV6-ENTRY control (Cat# [PS100001], Left lane) or pCMV6-ENTRY CFH (Cat# RC220772, Right lane) cDNA for 48 hrs and lysed. Equivalent amounts of cell lysates (5 ug per lane) were separated by SDS-PAGE and immunoblotted with anti-CFH (Cat# [TA804532]). Positive lysates [LY423097] (100ug) and [LC423097] (20ug) can be purchased separately from OriGene.



Western blot validation of overexpression lysate (Cat# [LY423097]) using anti-DDK antibody (Cat# [TA50011-100]). Left: Cell lysates from untransfected HEK293T cells; Right: Cell lysates from HEK293T cells transfected with RC220772 using transfection reagent MegaTran 2.0 (Cat# [TT210002]).