

Product datasheet for **RC220751**

IL17RC (NM_032732) Human Tagged ORF Clone

Product data:

Product Type:	Expression Plasmids
Product Name:	IL17RC (NM_032732) Human Tagged ORF Clone
Tag:	Myc-DDK
Symbol:	IL17RC
Synonyms:	CANDF9; IL17-RL; IL17RL
Mammalian Cell Selection:	Neomycin
Vector:	pCMV6-Entry (PS100001)
E. coli Selection:	Kanamycin (25 ug/mL)



[View online »](#)

ORF Nucleotide Sequence:

>RC220751 representing NM_032732
 Red=Cloning site Blue=ORF Green=Tags(s)

TTTTGTAATACGACTCACTATAGGGCGGCCGGAATTCGTCGACTGGATCCGGTACCGAGGAGATCTGCC
 GCC**CGGATCGCC**

ATGCCTGTGCCCTGGTTCTTGCTGTCCTTGGCACTGGGCCGAAGCCAGTGGTCCTTTCTCTGGAGAGGC
 TTGTGGGGCCTCAGGACGCTACCCACTGCTCTCCGGGCCTCTCCTGCCGCCTCTGGGACAGTGACATACT
 CTGCCTGCCTGGGGACATCGTGCCTGCTCCGGGCCCGTCTGGCGCCTACGCACCTGCAGACAGAGCTG
 GTGCTGAGGTGCCAGAAGGAGACCGACTGTGACCTCTGTCTGCGTGTGGCTGTCCACTTGGCCGTGCATG
 GGCCTGGGAAGAGCCTGAAGATGAGGAAAAGTTGGAGGAGCAGCTGACTCAGGGGTGGAGGAGCCTAG
 GAATGCCTCTCTCAGGCCAAGTCGTGCTCTCCTTCCAGGCCTACCCTACTGCCCGCTGCGTCTGCTG
 GAGGTGCAAGTGCCTGCTGCCCTGTGTCAGTTTGGTCAGTCTGTGGGCTCTGTGGTATATGACTGCTTCG
 AGGCTGCCCTAGGAGTGAGGTACGAATCTGGTCTATACTCAGCCAGGTACGAGAAGGAACTCAACCA
 CACACAGCAGCTGCCTGCCCTGCCCTGGCTCAACGTGTCAGCAGATGGTGACAACGTGCATCTGGTTCTG
 AATGTCTCTGAGGAGCAGCACTTCGGCCTCTCCCTGTACTGGAATCAGGTCCAGGGCCCCCAAAACCCC
 GGTGGCACAAAACCTGACTGGACCGCAGATCATTACCTTGAACACACAGACCTGGTTCCTGCCTCTG
 TATTACAGGTGTGGCCTCTGGAACCTGACTCCGTTAGGACGAACATCTGCCCTTCAGGGAGGACCCCGC
 GCACACAGAACCTCTGGCAAGCCGCCGACTGCGACTGCTGACCCTGCAGAGCTGGCTGCTGGACGCAC
 CGTGTCTGCTGCCCGCAGAAGCGGCACTGTGCTGGCGGGCTCCGGGTGGGACCCCTGCCAGCCACTGGT
 CCCACCGCTTTCCTGGGAGAACGTCACCTGTGGACAAGTTCTCGAGTCCCATTGCTGAAAGGCCACCT
 AACCTCTGTGTTCAAGTGAACAGCTCGGAGAAGCTGCAGCTGCAGGAGTGCTTGTGGCTGACTCCCTGG
 GGCTCTCAAAGACGATGTGCTACTGTTGGAGACACAGGCCCCAGGACAACAGATCCCTCTGTGCCTT
 GGAACCCAGTGGCTGTACTTCACTACCCAGCAAAGCCTCCACGAGGGCAGCTCGCCTTGGAGAGTACTTA
 CTACAAGACCTGCAGTCAGGCCAGTGTCTGCAGCTATGGGACGATGACTTGGGAGCGCTATGGCCTGCC
 CCATGGACAAATACATCCACAAGCGCTGGGCCCTCGTGTGGCTGGCCTACTCTTTGCCGCTGCGCT
 TTCCCTCATCCTCCTTCTCAAAAAGGATCACGCGAAAAGGGTGGCTGAGGCTCTTGAACAGGACGTCCGC
 TCGGGGGCGGCCAGGGGCCGCGGCTCTGCTCCTCTACTCAGCCGATGACTCGGGTTTCGAGCGCC
 TGGTGGGCGCCCTGGCGTCGGCCCTGTGCCAGCTGCCGCTGCGCGTGGCCGTAGACCTGTGGAGCCGTCG
 TGAAGTGAAGCGCAGGGGCCCGTGGCTTGGTTTACGCGCAGCGGCCAGACCCTGCAGGAGGGCGGC
 GTGGTGGTCTTGTCTTCTCCTCCGGTGGCGTGGCGCTGTGCAGCGAGTGGCTACAGGATGGGGTGTCCG
 GGCCCGGGGCGCACGGCCGACGACGCTTCCGCGCCTCGCTCAGCTGGGTGCTGCCCGACTTCTTGCA
 GGGCCGGGCGCCCGCAGCTACGTGGGGCCTGCTTCGACAGGCTGCTCCACCCGGACGCGCTACCCGCC
 CTTTTCCGACCGTGGCCGTCTTCACTGCCCCTCCAACTGCCAGACTTCTGGGGGCCCTGCAGCAGC
 CTCGCGCCCCGCTTCCGGGCGGCTCCAAGAGAGCGGAGCAAGTGTCCCGGCCCTTACGCCAGCCCT
 GGATAGCTACTTCCATCCCCGGGGACTCCCGCGCCGGGACGCGGGGTGGGACCAGGGCGGGACCTGGG
 GCGGGGACGGGACT

ACGCGTACGCGGCCGCTCGAGCAGAACTCATCTCAGAAGAGGATCTGGCAGCAAATGATATCCTGGATT
 ACAAGGATGACGACGATAAGGTTTAA

Protein Sequence: >RC220751 representing NM_032732
Red=Cloning site Green=Tags(s)

```
MPVPWFLLSLALGRSPVVL SLERLVGPQDATHCSPGL SCRLWSDILCLPGDIVPAPGPVLAPTHLQTEL
VLRQCQKETDCDLCLRVAVHLAVHGHWEPEDEEKFGGAADSGVEEPRNASLQAQVVSFQAYPTARCVLL
EVQVPAALVQFGQSVGSVYDCEFAALGSEVRIWSYTPRYEKELNHTQQLPALPWLNVSADGDNVHLVL
NVSEEQHFGLSL YWNQVQGPVKPRWHKNLTGPQIITLNHTDLVPCLCIQVWPLEPDSVRTNICPFREDPR
AHQNLWQAARLRLTLQSWLLDAPCSLPAEAAALCWRAPGGDPCQPLVPPLSWENVTVDKVLEFPLLKQHP
NLCVQVNSSEKLQLQECLWADSLGPLKDDVLLLETRGPQDNRSLEALEPSGCTSLPSKASTRAARLGEYL
LQDLQSGQCLQLWDDDLGALWACPMKYIHKRWALVWLACLLFAAALSLILLKKDHAKGWLRLKQDVR
SGAAARGRAALLYSADDSGFERLVGALASALCQLPLRVAVDLWSRRELSAQGPVAVFHAQRRTLQEGG
VVVLLFSPGAVALCSEWLQDGVSGPGAHGPHDAFRASLSCVLPDFLQGRAPGSYVGCADFRLHPDAVPA
LFRTVPVFTLPSQLPDFL GALQQPRAPRSGRLQERAEQVSRALQPALDSYFHPGTPAPGRGVGPGAGPG
AGDGT
```

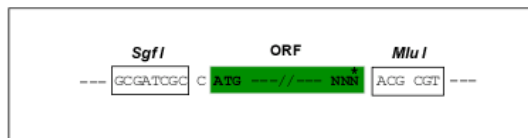
TRTRPLEQKLI SEEDLAANDILDYKDDDDKV

Chromatograms: https://cdn.origene.com/chromatograms/mk6808_e04.zip

Restriction Sites: SgfI-MluI

Cloning Scheme:

Cloning sites used for ORF Shuttling:



* The last codon before the Stop codon of the ORF

ACCN: NM_032732

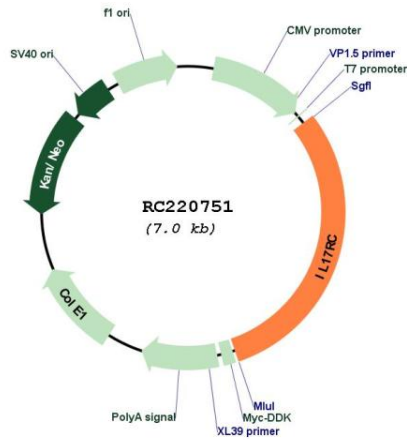
ORF Size: 2115 bp

OTI Disclaimer: The molecular sequence of this clone aligns with the gene accession number as a point of reference only. However, individual transcript sequences of the same gene can differ through naturally occurring variations (e.g. polymorphisms), each with its own valid existence. This clone is substantially in agreement with the reference, but a complete review of all prevailing variants is recommended prior to use. [More info](#)

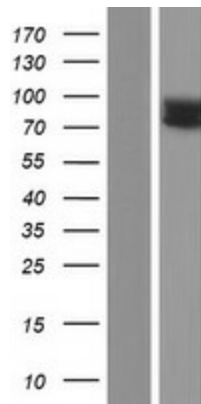
OTI Annotation: This clone was engineered to express the complete ORF with an expression tag. Expression varies depending on the nature of the gene.

Components:	The ORF clone is ion-exchange column purified and shipped in a 2D barcoded Matrix tube containing 10ug of transfection-ready, dried plasmid DNA (reconstitute with 100 ul of water).
Reconstitution Method:	<ol style="list-style-type: none">1. Centrifuge at 5,000xg for 5min.2. Carefully open the tube and add 100ul of sterile water to dissolve the DNA.3. Close the tube and incubate for 10 minutes at room temperature.4. Briefly vortex the tube and then do a quick spin (less than 5000xg) to concentrate the liquid at the bottom.5. Store the suspended plasmid at -20°C. The DNA is stable for at least one year from date of shipping when stored at -20°C.
RefSeq:	<u>NM_032732.3</u> , <u>NP_116121.2</u>
RefSeq Size:	2433 bp
RefSeq ORF:	2118 bp
Locus ID:	84818
UniProt ID:	<u>Q8NAC3</u>
Cytogenetics:	3p25.3-p24.1
Protein Families:	Druggable Genome, Transmembrane
MW:	74.6 kDa
Gene Summary:	This gene encodes a single-pass type I membrane protein that shares similarity with the interleukin-17 receptor (IL-17RA). Unlike IL-17RA, which is predominantly expressed in hemopoietic cells, and binds with high affinity to only IL-17A, this protein is expressed in nonhemopoietic tissues, and binds both IL-17A and IL-17F with similar affinities. The proinflammatory cytokines, IL-17A and IL-17F, have been implicated in the progression of inflammatory and autoimmune diseases. Multiple alternatively spliced transcript variants encoding different isoforms have been detected for this gene, and it has been proposed that soluble, secreted proteins lacking transmembrane and intracellular domains may function as extracellular antagonists to cytokine signaling. [provided by RefSeq, Feb 2011]

Product images:



Circular map for RC220751



Western blot validation of overexpression lysate (Cat# [LY409968]) using anti-DDK antibody (Cat# [TA50011-100]). Left: Cell lysates from untransfected HEK293T cells; Right: Cell lysates from HEK293T cells transfected with RC220751 using transfection reagent MegaTran 2.0 (Cat# [TT210002]).