

Product datasheet for **RC220681**

SOX11 (NM_003108) Human Tagged ORF Clone

Product data:

Product Type:	Expression Plasmids
Product Name:	SOX11 (NM_003108) Human Tagged ORF Clone
Tag:	Myc-DDK
Symbol:	SOX11
Synonyms:	CSS9; MRD27
Mammalian Cell Selection:	Neomycin
Vector:	pCMV6-Entry (PS100001)
E. coli Selection:	Kanamycin (25 ug/mL)



[View online »](#)

ORF Nucleotide Sequence:

>RC220681 representing NM_003108
 Red=Cloning site Blue=ORF Green=Tags(s)

TTTTGTAATACGACTCACTATAGGGCGGCCGGAATTCGTCGACTGGATCCGGTACCGAGGAGATCTGCC
 GCC**CGGATCGCC**

ATGGTGCAGCAGGCGGAGAGCTTGAAGCGGAGAGCAACCTGCCCGGGAGGCGCTGGACACGGAGGAGG
 GCGAATTCATGGCTTGCAGCCCGGTGGCCCTGGACGAGAGCGACCCAGACTGGTGAAGACGGCGTCGGG
 CCACATCAAGCGGCCGATGAACGCGTTCATGGTATGGTCCAAGATCGAACGCAGGAAGATCATGGAGCAG
 TCTCCGGACATGCACAACGCCGAGATCTCCAAGAGGCTGGGCAAGCGCTGGAAAAATGCTGAAGGACAGCG
 AGAAGATCCCCTTCATCCGGGAGGCGGAGCGGCTGCGGCTCAAGCACATGGCCGACTACCCCGACTACAA
 GTACCGGCCCGGAAAAAGCCAAAATGGACCCCTCGGCCAAGCCAGCGCCAGCCAGAGCCAGAGAAG
 AGCGCGCGCGGCGGCGGCGGAGCGCGGGCGGAGGCGGCGGGCGGTGCCAAGACCTCCAAGGGCTCCA
 GCAAGAAATGCGGCAAGCTCAAGGCCCGCGGCGCGGCCAAGCGGGCGCGGCAAGCGGCCCA
 GTCGGGGGACTACGGGGCGCGGCGACGACTACGTGCTGGGCGCCTGCGCGTGAGCGGCTCGGGCGGC
 GCGCGCGCGGCAAGACGGTCAAGTGCCTGTTCTGGATGAGGACGACGACGACGACGACGACGACGACG
 AGCTGCAGCTGCAGATCAAACAGGAGCCGACGAGGAGGACGAGGAACCCCGCACCAGCAGCTCCTGCA
 GCCCGCGGGCAGCAGCCGTCGAGCTGCTGAGACGCTACAACGTCGCCAAAGTGCCCGCCAGCCCTACG
 CTGAGCAGCTCGGCGGAGTCCCCGAGGGAGCGAGCCTCTACGACGAGGTGCGGGCCGCGCGACCTCGG
 GCGCGGGGGCGGCGAGCCGCTCTACTACAGCTTCAAGAACATCACCAAGCAGCACCCCGCCCGCTCGC
 GCAGCCCGCGTGTGCCCGGCTCCTCGCGCTCGGTGTCCACCTCCTCGTCCAGCAGCAGCGGCAGCAGC
 AGCGGCAGCAGCGGAGGACGCCGACGACCTGATGTTGACCTGAGCTGAATTTCTCTCAAAGCGCGC
 ACAGCCAGCAGCAGCAGCTGGGGGGCGGCGCGGCGGGAACCTGTCCCTGTCGTTGGTGATAA
 GGATTTGGATTCTGTTACGCGAGGCGAGCCTGGGCTCCCACTTCGAGTTCCCGACTACTGCACCGCGGAG
 CTGAGCGAGATGATCGCGGGGACTGGCTGGAGGCGAACTTCTCCGACCTGGTGTTCACATAT

AG**CGGACCG**ACGCGTACGCGGCCGCTCGAGCAGAACTCATCTCAGAAGAGGATCTGGCAGCAAATGATATCC
 TGGATTACAAGGATGACGACGATAAGGTTAA

Protein Sequence:

>RC220681 representing NM_003108
 Red=Cloning site Green=Tags(s)

MVQQAESLEAESNLPREALDTEEGEFMACSPVALDESDPDWCKTASGHIKRPMMNAFMVWSKIERRKIMEQ
 SPDHMNAEISKRLGKRWMLKDSEKIPFIREAERLRLKHMADYPDYKYRPRKPKMDPSAKPSASQSPEK
 SAAGGGGSAGGAGGAKTSKGSKKCGKLGKAPAAAGAKAGAGKAAQSGDYGGAGDDYVLGSLRVSGSGG
 GGAGKTVKCVFLDEDDDDDDDELQLQIKQEPDEEDEEPPHQQLLQPPGQQPSQLLRRYVAKVPASPT
 LSSSAESPEGASLYDEVKAGATSGAGGSRLLYYSFKNITKQHPPLAQPALSPASSRSVSTSSSSSSGSS
 SGSSGEDADDLMFDL.SLNF.SQSAHASEQQLGGAAAGNLSL.SL.VDKDLDSF.SEGSLGSHFEFPDYCTPE
 LSEMIAGDWLEANFSDLVFTY

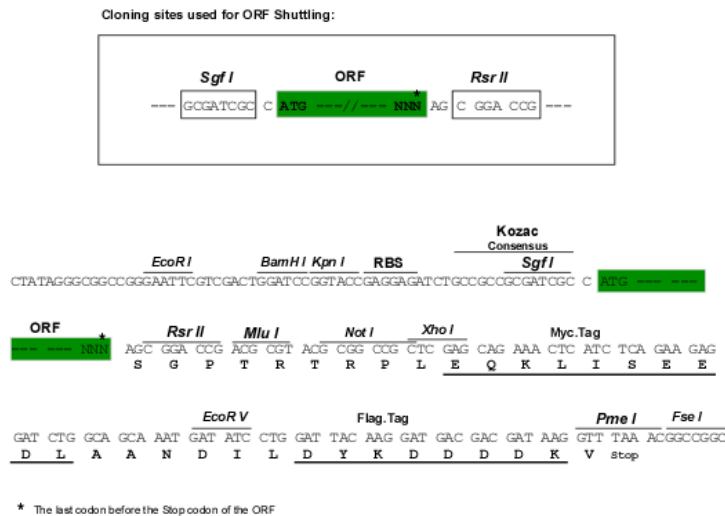
SGPTRTRRLEQKLI SEEDLAANDILDYKDDDDKV

Chromatograms:

https://cdn.origene.com/chromatograms/mg2702_g09.zip

Restriction Sites:

Sgfl-RsrII

Cloning Scheme:

ACCN: NM_003108

ORF Size: 1323 bp

OTI Disclaimer: Due to the inherent nature of this plasmid, standard methods to replicate additional amounts of DNA in *E. coli* are highly likely to result in mutations and/or rearrangements. Therefore, OriGene does not guarantee the capability to replicate this plasmid DNA. Additional amounts of DNA can be purchased from OriGene with batch-specific, full-sequence verification at a reduced cost. Please contact our customer care team at custsupport@origene.com or by calling 301.340.3188 option 3 for pricing and delivery.

The molecular sequence of this clone aligns with the gene accession number as a point of reference only. However, individual transcript sequences of the same gene can differ through naturally occurring variations (e.g. polymorphisms), each with its own valid existence. This clone is substantially in agreement with the reference, but a complete review of all prevailing variants is recommended prior to use. [More info](#)

OTI Annotation: This clone was engineered to express the complete ORF with an expression tag. Expression varies depending on the nature of the gene.

Components: The ORF clone is ion-exchange column purified and shipped in a 2D barcoded Matrix tube containing 10ug of transfection-ready, dried plasmid DNA (reconstitute with 100 ul of water).

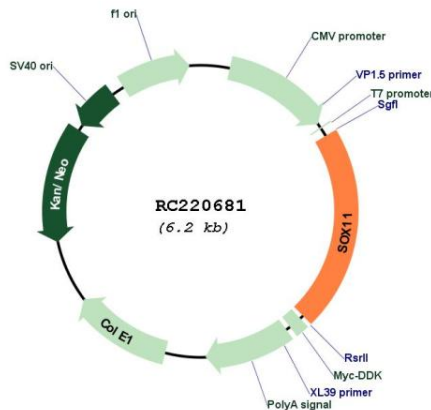
- Reconstitution Method:**
1. Centrifuge at 5,000xg for 5min.
 2. Carefully open the tube and add 100ul of sterile water to dissolve the DNA.
 3. Close the tube and incubate for 10 minutes at room temperature.
 4. Briefly vortex the tube and then do a quick spin (less than 5000xg) to concentrate the liquid at the bottom.
 5. Store the suspended plasmid at -20°C. The DNA is stable for at least one year from date of shipping when stored at -20°C.

RefSeq: [NM_003108.4](#)

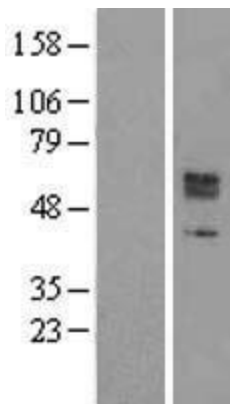
RefSeq Size: 8737 bp
RefSeq ORF: 1326 bp
Locus ID: 6664
UniProt ID: [P35716](#)
Cytogenetics: 2p25.2
Protein Families: ES Cell Differentiation/IPS, Induced pluripotent stem cells
MW: 46.5 kDa

Gene Summary: This intronless gene encodes a member of the SOX (SRY-related HMG-box) family of transcription factors involved in the regulation of embryonic development and in the determination of the cell fate. The encoded protein may act as a transcriptional regulator after forming a protein complex with other proteins. The protein may function in the developing nervous system and play a role in tumorigenesis. [provided by RefSeq, Jul 2008]

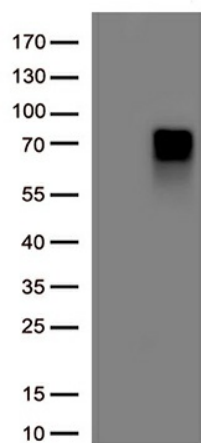
Product images:



Circular map for RC220681



Western blot validation of overexpression lysate (Cat# [LY418895]) using anti-DDK antibody (Cat# [TA50011-100]). Left: Cell lysates from untransfected HEK293T cells; Right: Cell lysates from HEK293T cells transfected with RC220681 using transfection reagent MegaTran 2.0 (Cat# [TT210002]).



HEK293T cells were transfected with the pCMV6-ENTRY control (Cat# [PS100001], Left lane) or pCMV6-ENTRY SOX11 (Cat# RC220681, Right lane) cDNA clone for 48 hrs and lysed. Equivalent amounts of cell lysates (5 ug per lane) were separated by SDS-PAGE and immunoblotted with anti-SOX11. (Cat# [TA592025])(1:10000)