

Product datasheet for RC220533

ST13 (NM_003932) Human Tagged ORF Clone

Product data:

Product Type:	Expression Plasmids
Product Name:	ST13 (NM_003932) Human Tagged ORF Clone
Tag:	Myc-DDK
Symbol:	ST13
Synonyms:	AAG2; FAM10A1; FAM10A4; HIP; HOP; HSPABP; HSPABP1; P48; PRO0786; SNC6
Mammalian Cell Selection:	Neomycin
Vector:	pCMV6-Entry (PS100001)
E. coli Selection:	Kanamycin (25 ug/mL)
ORF Nucleotide Sequence:	>RC220533 representing NM_003932 Red=Cloning site Blue=ORF Green=Tags(s)

TTTTGTAATACGACTCACTATAGGGCGGCCGGAATTCGTCGACTGGATCCGGTACCGAGGAGATCTGCC
GCC**CGATCGCC**

ATGGACCCCGCAAAGTGAACGAGCTTCGGCCTTTGTGAAAATGTGTAAGCAGGATCCGAGCGTTCTGC
ACACCGAGGAAATGCGCTTCCTGAGGGAGTGGGTGGAGAGCATGGGTGTTAAAGTACCACCTGCTACTCA
GAAAGCTAAATCAGAAGAAAATACCAAGGAAGAAAACCTGATAGTAAGAAGGTGGAGGAAGACTTAAAG
GCAGACGAACCATCAAGTGAGGAAAGTGATCTAGAAAATTGATAAAGAAGGTGTGATTGAACCAGACTG
ATGCTCCTCAAGAAATGGGAGATGAAAATGCGGAGATAACGGAGGAGATGATGGATCAGGCAAATGATAA
AAAAGTGGCTGCTATTGAAGCCCTAAATGATGGTGAACCCAGAAAGCCATTGACTTATTCACAGATGCC
ATCAAGCTGAATCCTCGCTTGGCCATTTGTATGCCAAGAGGGCCAGTGTCTTCGTCAAATTACAGAAGC
CAAATGCTGCCATCCGAGACTGTGACAGAGCCATTGAAATAAATCCTGATTGAGCTCAGCCTTACAAGTG
GCGGGGAAAGCACACAGACTTCTAGGCCACTGGGAAGAAGCAGCCCATGATCTTGCCCTTGCTGTAAA
TTGGATTATGATGAAGATGCTAGTGCAATGCTGAAAGAAGTTCAACCTAGGGCACAGAAAATTGCAGAAC
ATCGGAGAAAGTATGAGCGAAAACGTGAAGAGCGAGAGATCAAAGAAAGAATAGAACGAGTTAAGAAGGC
TCGAGAAGAGCATGAGAGAGCCCAGAGGGAGGAAGAAGCCAGACGACAGTCAGGAGCTCAGTATGGCTCT
TTCCAGGTGGCTTTCTGGGGGAATGCCTGGTAATTTTCCCGGGAATGCCTGGAATGGGAGGGGGCA
TGCTGGAATGGCTGGAATGCCTGGACTCAATGAAATTTAGTGATCCAGAGGTTCTTGACGCCATGCA
GGATCCAGAAGTTATGGTGGCTTCCAGGATGTGGCTCAGAACCCAGCAAATATGTCAAATACCAGAGC
AACCCAAAGTTATGAATCTCATCAGTAAATTGTCAGCCAAATTTGGAGGTCAAGCG

ACGCGTACGCGGCCGCTCGAGCAGAAACTCATCTCAGAAGAGGATCTGGCAGCAAATGATATCCTGGATT
ACAAGGATGACGACGATAAGGTTAA



[View online »](#)

Protein Sequence: >RC220533 representing NM_003932
Red=Cloning site Green=Tags(s)

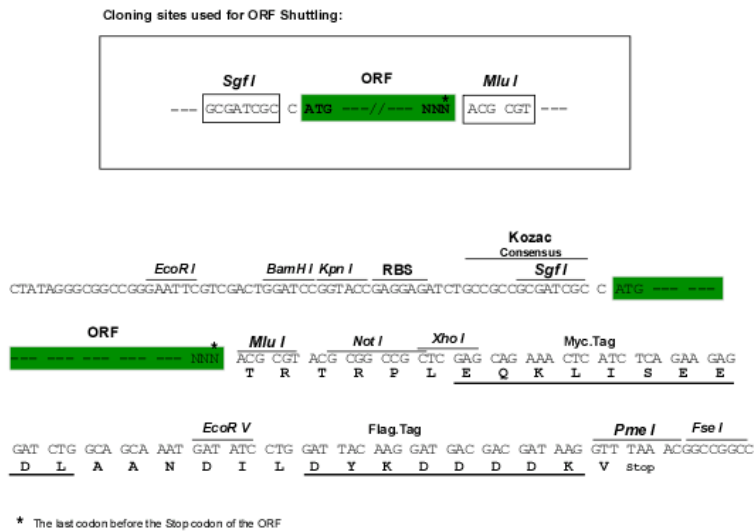
MDPRKVNELRAFVKMCKQDPSVLHTEEMRFLREWVESMGKVPATQKAKSEENTKEEKPDSKKVEEDLK
 ADEPSSEESDLEIDKEGVIEPDTDAPQEMGDENAEITEEMMDQANDKKVAAIEALNDGELQKAIDLFTDA
 IKLNPRLAIFYAKRASVFKLQKPNAAIRDCDRAIEINPDSAQPYKWRGKAHRLLGHWEEAAHDLALACK
 LDYDEDASAMLKEVQPRQAQIAEHRKRYERKREEREIKERIERVKKAREEHERAQREEEARRQSGAQYGS
 FPGGFPGGMPGNFPGGMPGMGGMPGMAGMPGLNEILSDPEVLAAMQDPEVMVAFQDVAQNPANMSKYQS
 NPKVMNLI SKLSAKFGGQA

TRTRPLEQKLISEEDLAANDILDYKDDDDKV

Chromatograms: https://cdn.origene.com/chromatograms/mk6275_c10.zip

Restriction Sites: SgfI-MluI

Cloning Scheme:



ACCN: NM_003932

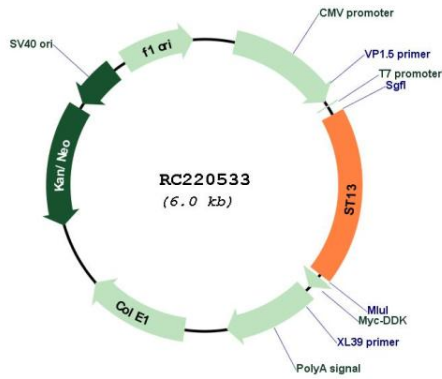
ORF Size: 1107 bp

OTI Disclaimer: Due to the inherent nature of this plasmid, standard methods to replicate additional amounts of DNA in E. coli are highly likely to result in mutations and/or rearrangements. Therefore, OriGene does not guarantee the capability to replicate this plasmid DNA. Additional amounts of DNA can be purchased from OriGene with batch-specific, full-sequence verification at a reduced cost. Please contact our customer care team at custsupport@origene.com or by calling 301.340.3188 option 3 for pricing and delivery.

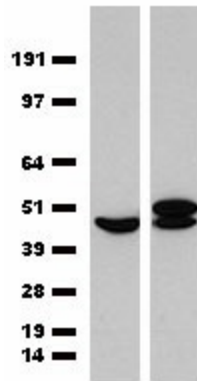
The molecular sequence of this clone aligns with the gene accession number as a point of reference only. However, individual transcript sequences of the same gene can differ through naturally occurring variations (e.g. polymorphisms), each with its own valid existence. This clone is substantially in agreement with the reference, but a complete review of all prevailing variants is recommended prior to use. [More info](#)

OTI Annotation:	This clone was engineered to express the complete ORF with an expression tag. Expression varies depending on the nature of the gene.
Components:	The ORF clone is ion-exchange column purified and shipped in a 2D barcoded Matrix tube containing 10ug of transfection-ready, dried plasmid DNA (reconstitute with 100 ul of water).
Reconstitution Method:	<ol style="list-style-type: none">1. Centrifuge at 5,000xg for 5min.2. Carefully open the tube and add 100ul of sterile water to dissolve the DNA.3. Close the tube and incubate for 10 minutes at room temperature.4. Briefly vortex the tube and then do a quick spin (less than 5000xg) to concentrate the liquid at the bottom.5. Store the suspended plasmid at -20°C. The DNA is stable for at least one year from date of shipping when stored at -20°C.
RefSeq:	NM_003932.5
RefSeq Size:	3214 bp
RefSeq ORF:	1110 bp
Locus ID:	6767
UniProt ID:	P50502
Cytogenetics:	22q13.2
Domains:	TPR, STI1
Protein Families:	Druggable Genome
MW:	41.2 kDa
Gene Summary:	The protein encoded by this gene is an adaptor protein that mediates the association of the heat shock proteins HSP70 and HSP90. This protein has been shown to be involved in the assembly process of glucocorticoid receptor, which requires the assistance of multiple molecular chaperones. The expression of this gene is reported to be downregulated in colorectal carcinoma tissue suggesting that it is a candidate tumor suppressor gene. Alternative splicing results in multiple transcript variants encoding different isoforms. [provided by RefSeq, Jun 2013]

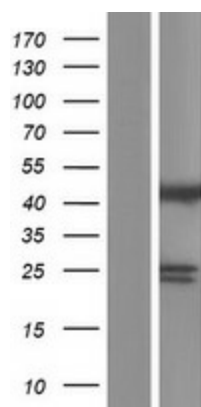
Product images:



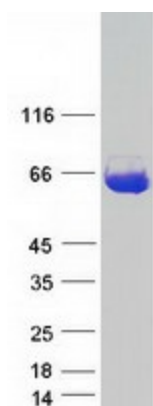
Circular map for RC220533



HEK293T cells or pCMV6-ENTRY ST13 (Cat# RC220533, Right lane) cDNA for 48 hrs and lysed. Equivalent amounts of cell lysates (5 ug per lane) were separated by SDS-PAGE and immunoblotted with anti-ST13 (Cat# [TA591002], 1:1000)



Western blot validation of overexpression lysate (Cat# [LY418342]) using anti-DDK antibody (Cat# [TA50011-100]). Left: Cell lysates from untransfected HEK293T cells; Right: Cell lysates from HEK293T cells transfected with RC220533 using transfection reagent MegaTran 2.0 (Cat# [TT210002]).



Coomassie blue staining of purified ST13 protein (Cat# [TP320533]). The protein was produced from HEK293T cells transfected with ST13 cDNA clone (Cat# RC220533) using MegaTran 2.0 (Cat# [TT210002]).