

Product datasheet for RC220432

PSMA4 (NM_001102668) Human Tagged ORF Clone

Product data:

Product Type: Expression Plasmids
Product Name: PSMA4 (NM_001102668) Human Tagged ORF Clone
Tag: Myc-DDK
Symbol: PSMA4
Synonyms: HC9; HsT17706; PSC9
Mammalian Cell Selection: Neomycin
Vector: pCMV6-Entry (PS100001)
E. coli Selection: Kanamycin (25 ug/mL)
ORF Nucleotide Sequence: >RC220432 representing NM_001102668
 Red=Cloning site Blue=ORF Green=Tags(s)

TTTTGTAATACGACTCACTATAGGGCGCCGGGAATTCGTCGACTGGATCCGGTACCGAGGAGATCTGCC
 GCC**CGATCGCC**

ATGGCTTGCAGTGTGGCAGGCATAAATTCTGATGCTAATGTTCTGACTAATGAACAAAGGCTCATTGCTC
 AAAGGTATTTATTACAGTATCAGGAGCCAATACCTTGTGAGCAGTTGGTTACAGCGCTGTGTGATATCAA
 ACAAGCTTATACACAATTTGGAGGAAAACGTCCCTTTGGTGTTCATTGCTGTACATTGGCTGGGATAAG
 CACTATGGCTTTCAGCTCTATCAGAGTGACCCTAGTGGAAATTACGGGGATGGAAGGCCACATGCATTG
 GAAATAATAGCGCTGCAGCTGTGCAATGTTGAAACAAGACTATAAAGAAGGAGAAATGACCTTGAAGTC
 AGCACTTGCTTTAGCTATCAAAGTACTAAATAAGACCATGGATGTTAGTAACTCTCTGCTGAAAAAGTG
 GAAATTGCAACACTAACAGAGAGAATGAAAGACAGTAATCAGAGTTCTCAAACAAAAAGAGTGGAGC
 AGTTTGATCAAAAAACACGAGGAAGAAGAAGCCAAAGCTGAGCGTGAGAAGAAAAGAAAAGAACAGAAAGA
 AAAGGATAAA

ACGCGTACGCGGCCGCTCGAGCAGAACTCATCTCAGAAGAGGATCTGGCAGCAATGATATCCTGGATT
 ACAAGGATGACGACGATAAGGTTTAA

Protein Sequence: >RC220432 representing NM_001102668
 Red=Cloning site Green=Tags(s)

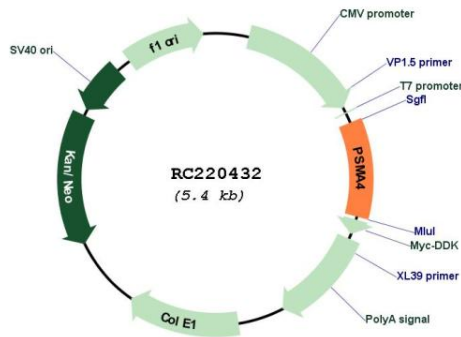
MACSVAGITSDANVLTNELRLIAQRYLLQYQEPICEQLVTALCDIKQAYTQFGGKRPFGVSLLYIGWDK
 HYGFQLYQSDPSGNYGGWKATCIGNNSAAAVSMLKQDYKEGEMTLKSALALAIKVLNKTMDVSKLSAEKV
 EIATLTRENGKTIVIRVLKQKEVEQLIKKHEEEEEAKAEREKKEKEQKEDK

TRTRPLEQKLISEEDLAANDILDYKDDDDKV

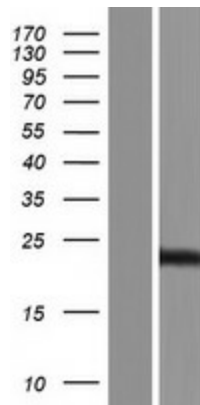


UniProt ID: [P25789](#)
Cytogenetics: 15q25.1
Protein Families: Druggable Genome, Protease
Protein Pathways: Proteasome
MW: 21.2 kDa
Gene Summary: This gene encodes a core alpha subunit of the 20S proteasome, which is a highly ordered ring-shaped structure composed of four rings of 28 non-identical subunits. Proteasomes cleave peptides in an ATP- and ubiquitin-dependent manner. [provided by RefSeq, Aug 2016]

Product images:



Circular map for RC220432



Western blot validation of overexpression lysate (Cat# [LY420187]) using anti-DDK antibody (Cat# [TA50011-100]). Left: Cell lysates from un-transfected HEK293T cells; Right: Cell lysates from HEK293T cells transfected with RC220432 using transfection reagent MegaTran 2.0 (Cat# [TT210002]).