

Product datasheet for **RC220396**

FLCN (NM_144997) Human Tagged ORF Clone

Product data:

Product Type:	Expression Plasmids
Product Name:	FLCN (NM_144997) Human Tagged ORF Clone
Tag:	Myc-DDK
Symbol:	FLCN
Synonyms:	BHD; DENND8B; FLCL
Mammalian Cell Selection:	Neomycin
Vector:	pCMV6-Entry (PS100001)
E. coli Selection:	Kanamycin (25 ug/mL)



[View online »](#)

ORF Nucleotide Sequence:

>RC220396 representing NM_144997
 Red=Cloning site Blue=ORF Green=Tags(s)

TTTTGTAATACGACTCACTATAGGGCGGCCGGAATTCGTCGACTGGATCCGGTACCGAGGAGATCTGCC
 GCC**CGGATCGCC**

ATGAATGCCATCGTGGCTCTCTGCCACTTCTGCGAGCTCCACGGCCCCGCACTCTTTCTGCACGGAGG
 TGCTGCACGCCCCACTTCTCAAGGGGATGGGAATGAGGACAGTCTGGCCAGGGTGAGCAGGCGGAAGA
 AGAGGAAGGTGGCATTAGATGAACAGTCGGATGCGTGCCACAGCCCCGAGAGGGGGCCAGCGTCGAG
 TCCAGCAGCCCCGGGGCCAAAAAGTCGGACATGTGCGAGGGCTGCCGGTCACTTGTCTGCAGGGCACCCGG
 GATATATCAGCCATGATAAAGAGACCTCCATTAATACGTGAGCCACCAGCACCCAGCCACCCAGCT
 CTTAGCATTGTCCGCCAGGCTGTGTCCGAGCCTGAGCTGTGAGGTCTGCCCTGGCCGTGAAGGCCCC
 ATCTTCTCGGAGATGAGCAGCACGGCTTTGTGTTGAGCCACACCTTCTCATCAAGGACAGCCTGGCCA
 GGGGCTTCCAGCGCTGGTACAGCATCATACCATCATGATGGACCGGATCTACCTCATCAACTCCTGGCC
 CTTCTGTGGGAAGGTCGGGGAATCATCGATGAGCTCCAGGGCAAGGCGCTCAAGGTGTTTGAGGCA
 GAGCAGTTTGGATGCCACAGCGTGTCTAGAGGATGAACACAGCCTTACGCCATTCTACACCAGAGGA
 ACGGCAACGCGCGCCGCTCGCTGACATCGCTGACAAGTATGACAACCTGTGGGCGTGCCTGCACACCTC
 CTTTGCCTGGCTCCTGAAGGCGTGTGGCAGCCGGCTGACCCGAGAAGCTCCTGGAAGGTGCTCCGACCGAG
 GATACCTTGGTCCAGATGGAGAAGCTCGCTGATTTAGAAGAGGAATCAGAAAAGCTGGGACAACTCTGAGG
 CTGAAGAGGAGGAGAAAGCCCTGTGTTGCCAGAGAGTACAGAAGGGCGGGAGCTGACCCAGGGCCCCGGC
 AGAGTCTCTCTCTCTCAGGCTGTGGGAGCTGGCAGCCCCGGAAGCTGCCAGTCTTCAAGTCCCTCCGG
 CACATGAGGCAGTCTGGTGCCCTTCTTTCCGCATGCTGGCCTGGCACGTTCTCATGGGGAACCAGG
 TGATCTGGAAAAGCAGAGACGTGGACTGTCAGCTCCAGTCACTTTTGAAGTACTTCGGACCATGCTTCCCGT
 GGGCTGCGTCCGCATCATCCCATACAGCAGCCAGTACGAGGAGGCTATCGGTGCAACTTCTGGGGCTC
 AGCCCGCAGTGCAGATCCCCCCCCACGTGCTCTCCTCAGAGTTTGTGTATCGTGGAGGTCCACGCGAG
 CCGCACGTTCCACCCTCCACCCTGTGGGGTGTGAGGATGACCAGTCTCTCAGCAAGTACGAGTTTGTGGT
 GACCAGTGGGAGCCCTGTAGCTGCAGACCGAGTGGGCCCCACCATCCTGAATAAGATTGAAGCGGCTCTG
 ACCAACCCAGAACCTGTCTGTGGATGTGGTGGACCAGTGCCTCGTCTGCCTCAAGGAGGAGTGGATGAACA
 AAGTGAAGGTGCTTTTTAAGTTCACCAAGGTGGACAGTCGACCCAAAGAGGACACACAGAAGCTGCTGAG
 CATCTGGGTGCGTCCGAGGAGGACAATGTCAAGCTGCTGAAGTCTGGATGACTGGCCTGAGCAAGACC
 TACAAGTACACCTCATGTCCACGGTCCGAGCCCCACAGCCTCGGAGTCTCGGAAC

ACGCGTACGCGGGCCGCTCGAGCAGAAACTCATCTCAGAAGAGGATCTGGCAGCAAATGATATCCTGGATT
 ACAAGGATGACGACGATAAGGTTTAA

Protein Sequence:

>RC220396 representing NM_144997
 Red=Cloning site Green=Tags(s)

MNAIVALCHFCELVHPRFLFCTEVLHAPLPQGDGNEIDSPGQGEQAEIEEGGIQMNSRMRHSPAEGASVE
 SSSPGPKKSDMCEGCRSLAAGHPGYISHDKETSIKYVSHQHPSPQLFSIVRQACVRSLSCEVCPGREGP
 IFFGDEQHGFFVSHFTFFIKDSLARGFQRWYSIITIMMDRIYLINSWPFLGKVRGIIDELQKALKVFEA
 EQFGCPQRAQRMNTAFTPFLHQRNGNAARSLTSLTSDNLWACLHTSFALLKACGSRLTEKLEGAPE
 DTLVQMEKLADLEEESESWDNSEAEIEEKAPVLPSTEGREL TQGPAESSLSGCGSWQPRKLPVFKSLR
 HMRQVLGAPSFRLAWHVLGNQVIWKSVDVLDVQSAFEVLRMLPVGCVRIIPYSSQYEEAYRCNFLGL
 SPHVQIPPHVLSSEFAVIVEVHAAARSTLHPVGCEDDQSLSKYEFVVTSGSPVAADRVGPTILNKIEAAL
 TNQNLSDVDVQCLVCLKEEWMNKVKVLFKFTKVDSRPKEDTQKLLSILGASEEDNVKLLKFWMTGLSKT
 YKSHLMSTVRSPTASESRN

TRTRPLEQKLISEEDLAANDILDYKDDDDKV

Chromatograms:

https://cdn.origene.com/chromatograms/mk6707_h02.zip

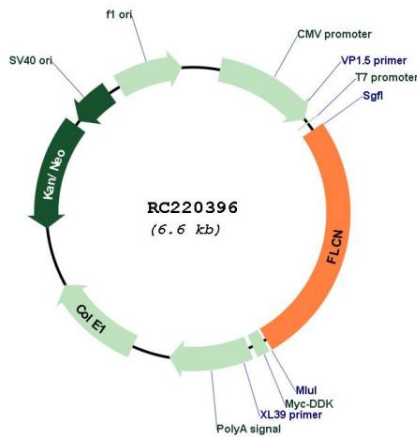
Restriction Sites:

Sgfl-Mlul

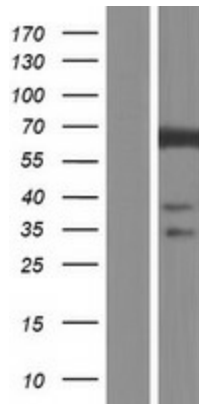
Protein Families: Druggable Genome
Protein Pathways: Renal cell carcinoma
MW: 64.3 kDa

Gene Summary: This gene is located within the Smith-Magenis syndrome region on chromosome 17. Mutations in this gene are associated with Birt-Hogg-Dube syndrome, which is characterized by fibrofolliculomas, renal tumors, lung cysts, and pneumothorax. Alternative splicing of this gene results in two transcript variants encoding different isoforms. [provided by RefSeq, Jul 2008]

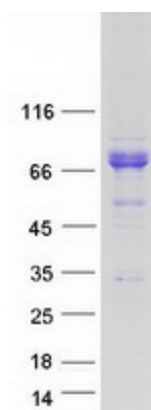
Product images:



Circular map for RC220396



Western blot validation of overexpression lysate (Cat# [LY408135]) using anti-DDK antibody (Cat# [TA50011-100]). Left: Cell lysates from untransfected HEK293T cells; Right: Cell lysates from HEK293T cells transfected with RC220396 using transfection reagent MegaTran 2.0 (Cat# [TT210002]).



Coomassie blue staining of purified FLCN protein (Cat# [TP320396]). The protein was produced from HEK293T cells transfected with FLCN cDNA clone (Cat# RC220396) using MegaTran 2.0 (Cat# [TT210002]).