

Product datasheet for RC220367

POLR1B (NM_019014) Human Tagged ORF Clone

Product data:

Product Type:	Expression Plasmids
Product Name:	POLR1B (NM_019014) Human Tagged ORF Clone
Tag:	Myc-DDK
Symbol:	POLR1B
Synonyms:	A135; RPA2; RPA135; Rpo1-2; TCS4
Mammalian Cell Selection:	Neomycin
Vector:	pCMV6-Entry (PS100001)
E. coli Selection:	Kanamycin (25 ug/mL)
ORF Nucleotide Sequence:	>RC220367 representing NM_019014 Red=Cloning site Blue=ORF Green=Tags(s)

TTTTGTAATACGACTCACTATAGGGCGGCCGGGAATTCGTCGACTGGATCCGGTACCGAGGAGATCTGCC
GCC**CGATCGCC**

ATGGATCCTGGCAGCCGGTGGCGGAACCTGCCAGCGGGCTAGCCTAAAGCACTTGACTGACCCCTCTT
ATGGAATCCCGCGGGAACAGCAAAGGCAGCGTTGCAGGAGCTGACGCGGGCGCACGTGGAGTCTTCAA
CTACGCTGTGCACGAGGGTCTCGGCCTCGCGGTGCAGGCTATACCTCCCTTTGAATTTGCTTTCAAAGAT
GAGCGTATCTCTTTACTATTCTGGATGCTGTTATCAGTCCACCTACAGTTCAAAAGGGACCATCTGCA
AAGAGGCCAATGTTTATCCAGCAGAATGCCGGGCCGAAGGAGTACCTACCGTGGGAAGTTGACAGCTGA
TATCAACTGGGCAGTGAATGGAATCTCAAAGGAATCATTAAAGCAGTTTCTTGGCTATGTTCCCATCATG
GTGAAATCCAAGCTTTGCAACTTACGTAACCTTCCCCACAAGCCCTCATTGAGCACCATGAGGAGGCAG
AGGAAATGGGGGGCTATTTTATAATCAATGGCATTGAAAAAGTCATCCGAATGTTGATTATGCCTCGGAG
AAATTTTCCCATTGCAATGATAAGACCAAAATGAAAAACAGAGGGCCTGGTTATACTCAGTATGGAGTT
TCAATGCACTGTGTGAGGGAAGAACATCCGCTGTCAATATGAACCTCCACTACTTGAAAAATGGCACAG
TTATGTTGAACTTTATTTACCGAAAAGAAGTGTCTTTCTTCTTTGGGATTTGCACTTAAGGCACCTGT
CAGCTTTTCTGATTATCAGATCTTTCAGGAGCTCATCAAAGAAAAAGAGGATGATCTTTCTTAGGAAC
TCTGTTTCTCAGATGTTAAGGATTGTAATGGAAGAGGGTTGTTTCGACAAAAACAGGTCCTTAACACTAC
TAGGTGAATGCTTCAGAGTAAAACCTCAATGTTCCCTGACTGGTACCCAAATGAGCAAGCTGCGGAGTTCC
GTTTAACCAAGTGCATCTGTATCCACTTGAATCCAATACTGAAAAAGTTTTATATGCTTTGTCTCATGACG
CGAAAGCTCTTTGCTTTAGCCAAAGGAGAGTGCATGGAGGACAATCCTGATAGTTTGGTGAACCGAAG
TCCTCACACCGGGTCAAGCTCTTCTTATGTTCCCTGAAGGAAAACTGGAAGGTTGGTTAGTGTCTATTAA
AATAGCTTTTGATAAGAAGGCTCAGAAGACCAGTGTTCATGAACACTGACAATTTGATGAGGATTTTT
ACAATGGGCATAGACCTTACAAAACATTTGAATACCTTTTTGCTACTGGGAATCTCGTCTTAAAAACAG
GTCTTGGCCTCCTACAAGATTCTGGACTTTGTGTTGGTGTGCAAGCTGAACCTCATACGCTACCTCTC
CCATTTCCGCTGCGTGCACAGAGGGCTGATTTTGCCAAGATGAGGACCACCACAGTACGACGGCTGCTG



[View online »](#)

CCAGAGTCCTGGGGCTTCCTTTGTCCCCTGCATACCCAGACGGGGAGCCCTGTGGCCTGATGAACCACC
TAACTGCCGTATGTGAGGTTGTACACAGTTTGTGTATACGGCATCTATCCAGCTTTACTGTGCAACTT
GGGGTCACTCCCATTGATGGAGCTCCCCACCGATCATACAGTGAGTGCTACCCTGTCCTGCTGGACGGT
GTCATGGTTGGCTGGGTGGATAAGGATCTTGCTCCAGGCATCGCAGATTCTTTCGTCATTTTAAGGTGT
TGAGAGAGAAAAGAAATTCCTCCCTGGATGGAAGTGGTCTTATACCCATGACAGGAAAACCAAGTCTGTA
CCCAGGATTGTTCTTTTTACCCTCCTTGTAGACTGGTACGGCCTGTGCAGAACTTAGCATTGGGCAAA
GAAGAGCTAATTGGAACATGGAACAGATCTTCATGAATGTCGCTATCTTTGAGGATGAAGTTTTGCTG
GAGTTACCACACACCAGGAACCTTTCCACACAGCCTGCTGAGTGTGATTGCCAACTTCATCCCTTTCTC
TGATCACAAACCAGAGTCCACGGAACATGTACCAATGCCAGATGGGTAAGCAAACATATGGGCTTTCCACTT
CTCACTTATCAAGACCGATCGGATAACAAACTGTATCGTCTTCAGACTCCTCAGAGTCCCTTGGTGAGAC
CCTCCATGTATGATTATTATGACATGGATAACTATCCAATTGGGACCAATGCCATCGTTGCTGTGATTTT
TTACACTGGCTATGATATGGAAGATGCCATGATTGTGAATAAGGCCTCTTGGGAACGAGGCTTTGCCCAT
GGAAGTGTCTACAAGTCTGAGTTCATAGACCTCTCTGAAAAAATTAACAAGGAGATAGTAGCCTGGTGT
TTGGCATCAAACCTGGTGACCCACGCTTCTGCAGAAGTAGATGACGATGGATTGCCGTTTATAGGAGC
AAAAGTGCAGTACGGAGATCCGTATTACAGCTACCTCAACCTCAACACCGGGGAAAGTTTTGTGATGTAC
TATAAGAGTAAAGAAAATTTGTGTTGTGGATAACATCAAAGTGTGCAGTAATGACACTGGGAGTGGAAAAT
TCAAGTGTGTTTGCATCACTATGAGAGTGCCTCGGAACCAACTATCGGAGATAAATTTGCCAGTCGCCA
TGGGCAGAAGGGCATTAAAGCAGATTGTGGCCGGCTGAGGACATGCCTTTTACTGAGAGTGGGATGGTC
CCAGACATTCTGTTCAATCCCCATGGTTTTCCATCCCGCATGACCATTGGGATGTTAATTGAGAGTATGG
CCGGGAAGTCTGCAGCTTTGCATGGTCTCTGCCATGATGCTACACCCTTCATCTTCTCAGAGGAGAACTC
GGCCTTAGAATACTTTGGTGAGATGTTAAAGGCTGCTGGCTACAATTTCTATGGCACCGAGAGGTTATAT
AGTGGCATCAGTGGGCTAGAAGTGAAGCAGACATCTTCATAGGAGTGGTTTATTATCAGCGCTTACGCC
ATATGGTCTCAGACAAAATTTCAAGTAAGGACAAGTGGAGCCCGAGACAGAGTCACCAACCCAGCCTATTGG
GGGAAGAAATGTCCAGGGTGAATCCGTTTTGGGGAGATGGAACGGGATGCGCTTTTAGCTCATGGTACA
TCTTTTCTCCTTCATGACCGCCTTTCAACTGCTCAGATCGGTGAGCCATGTGTGTGAAGTGTG
GCAGTTTACTCTCCTCACTGTTGGAGAAGCCACCCCTTCTTGGTCTGCCATGCGCAACAGAAAATACAA
CTGTACTCTGTGTAGTCGAGTGACACTATCGATACTGTTTCTGTGCCTTATGTTTTTGGTATTTTGTG
GCTGAAGTGGCAGCTATGAACATCAAAGTGAAGTGGATGTTGTT

AGCGGACCGACGCGTACGCGGCCGCTCGAGCAGAAAACCTCATCTCAGAAGAGGATCTGGCAGCAAATGATATCC
TGGATTACAAGGATGACGACGATAAGGTTTAA

Protein Sequence: >RC220367 representing NM_019014
 Red=Cloning site Green=Tags(s)

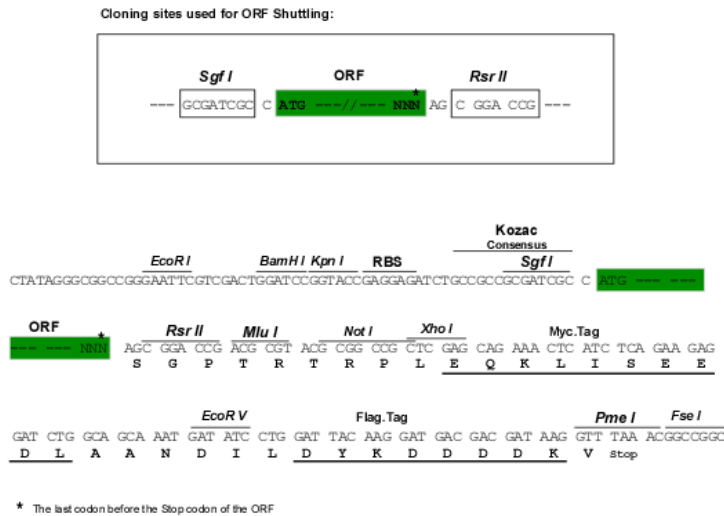
MDPGSRWRNLPSPGSLKHLTDPSYGIPREQQKAALQELTRAHVESFNAYVHEGLGLAVQAIPPFFAFKD
 ERISFTILDAVISPTVPKGTICKEANVYPAECRGRSTYRGKLTADINWAVNGISKGIKQFLGYVPI
 VKSKLCNLRNLPQALIEHHEEAEMGGYFIINGIEKVIRMLIMPRRNFPIAMIRPKWKTRGPGYTYGV
 SMHCVREEHSAVNMNLHYLENGTVMLNFIYRKELFFLPLGFALKALVSFSDYQIFQELIKGKEDDSFLRN
 SVSQMLRIVMEEGCTQKQVLNYLGEFRVKNVDPWYPNEQAAEFLFNQICIHLSNTEKFYMLCLMT
 RKLALAKGECMEDNPDLSVNQEVLTGPQLFLMFLKEKLEGLVSIKIAFDKKAQKTSVSMNTDNLMRIF
 TMGIDLTKPFEYLFATGNLRSKTLGGLLQDGLCVVADKLNFIYRLSHFRCVHRGADFAKMRITTVRRL
 PESWGFLCPVHTPDGEPGLMNLTAVCEVVTQFVYTASIPALLCNLGVTPIDGAPHRYSYSECYPVLLDG
 VMVGWVDKDLAPGIADSLRHFVLRKRIPPWMEVVLIPMTGKPSLYPGLFLLFTTPCRLVRPVQNLALGK
 EELIGTMEQIFMNVAFI FEDEVFAGVTTHQELFPHSLLSVIANFIPFSDHNQSPRNMYYCQMGKQTMGFPL
 LTYQDRSDNKL YRLQTPQSPLVRPSMYDYDDMDNYP IGTNAIVAVISYTGDMEDAMIVNKASWERGFAH
 GSVYKSEFIDLSEKIKQGDSSLVFGIKPGDPRVLQKLDLDDGLPFI GAKLQYGDYYSYLNLTGESFV
 MYKSKENCVVNDIKVCSNDTGSFKFCVCITMRVPRNPTIGDKFASRHGQKILSRLWPAEDMPFTESGMV
 PDILFNPHGFP SRMTIGMLIESMAGKSAALHGLCHDATPFIFSENSALEYFGEMLKAAGNFYGT
 RLYSGISGLELEADIFIGVYYQRLRHMVSDKFQVVRTTGARDRVTNQPIGGRNVQGGIRFGEMERD
 ALLAHGTSFLLHDLRNFNCSDRSVAHVCVKCGSLLSPLLEKPPPSWSAMRNRKYNCTLCSRSDTIDT
 VSVYVFRYFV AELAAMNIKVKLDVV

SGPTRRRLEQKLI SEEDLAANDILDYKDDDDKV

Chromatograms: https://cdn.origene.com/chromatograms/mk6188_d12.zip

Restriction Sites: SgfI-RsrII

Cloning Scheme:

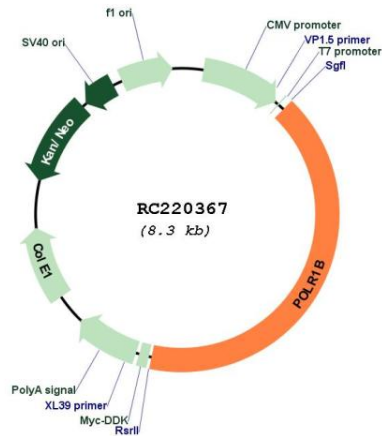


ACCN: NM_019014

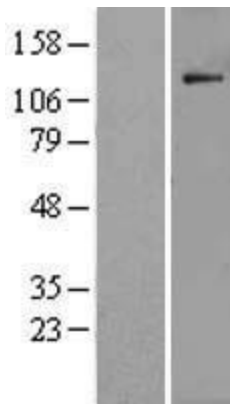
ORF Size: 3405 bp

OTI Disclaimer:	The molecular sequence of this clone aligns with the gene accession number as a point of reference only. However, individual transcript sequences of the same gene can differ through naturally occurring variations (e.g. polymorphisms), each with its own valid existence. This clone is substantially in agreement with the reference, but a complete review of all prevailing variants is recommended prior to use. More info
OTI Annotation:	This clone was engineered to express the complete ORF with an expression tag. Expression varies depending on the nature of the gene.
Components:	The ORF clone is ion-exchange column purified and shipped in a 2D barcoded Matrix tube containing 10ug of transfection-ready, dried plasmid DNA (reconstitute with 100 ul of water).
Reconstitution Method:	<ol style="list-style-type: none"> 1. Centrifuge at 5,000xg for 5min. 2. Carefully open the tube and add 100ul of sterile water to dissolve the DNA. 3. Close the tube and incubate for 10 minutes at room temperature. 4. Briefly vortex the tube and then do a quick spin (less than 5000xg) to concentrate the liquid at the bottom. 5. Store the suspended plasmid at -20°C. The DNA is stable for at least one year from date of shipping when stored at -20°C.
RefSeq:	NM_019014.3 , NP_061887.2
RefSeq Size:	5968 bp
RefSeq ORF:	3408 bp
Locus ID:	84172
UniProt ID:	Q9H9Y6
Cytogenetics:	2q14.1
Domains:	RNA_pol_Rpb2_3, RNA_pol_Rpb2_5
Protein Families:	Transcription Factors
Protein Pathways:	Metabolic pathways, Purine metabolism, Pyrimidine metabolism, RNA polymerase
MW:	128 kDa
Gene Summary:	Eukaryotic RNA polymerase I (pol I) is responsible for the transcription of ribosomal RNA (rRNA) genes and production of rRNA, the primary component of ribosomes. Pol I is a multisubunit enzyme composed of 6 to 14 polypeptides, depending on the species. Most of the mass of the pol I complex derives from the 2 largest subunits, Rpa1 and Rpa2 in yeast. POLR1B is homologous to Rpa2 (Seither and Grummt, 1996 [PubMed 8921381]).[supplied by OMIM, Mar 2008]

Product images:



Circular map for RC220367



Western blot validation of overexpression lysate (Cat# [LY402726]) using anti-DDK antibody (Cat# [TA50011-100]). Left: Cell lysates from untransfected HEK293T cells; Right: Cell lysates from HEK293T cells transfected with RC220367 using transfection reagent MegaTran 2.0 (Cat# [TT210002]).