

## Product datasheet for RC220272L1

### ADCY3 (NM\_004036) Human Tagged Lenti ORF Clone

#### Product data:

Product Type:	Expression Plasmids
Product Name:	ADCY3 (NM_004036) Human Tagged Lenti ORF Clone
Tag:	Myc-DDK
Symbol:	ADCY3
Synonyms:	AC-III; AC3; BMIQ19
Mammalian Cell Selection:	None
Vector:	pLenti-C-Myc-DDK (PS100064)
E. coli Selection:	Chloramphenicol (34 ug/mL)
ORF Nucleotide Sequence:	The ORF insert of this clone is exactly the same as(RC220272).
Restriction Sites:	SgfI-MluI
Cloning Scheme:	

Cloning sites used for ORF Shuttling:



\* The last codon before the Stop codon of the ORF.

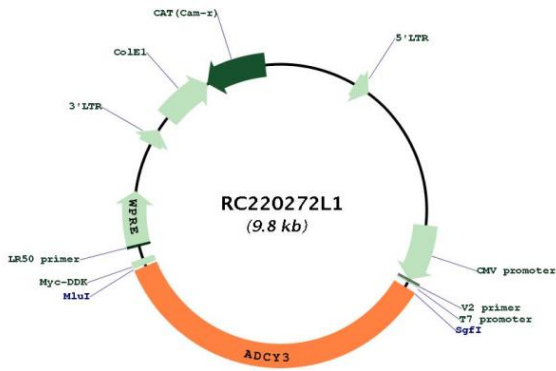
ACCN:	NM_004036
ORF Size:	3432 bp



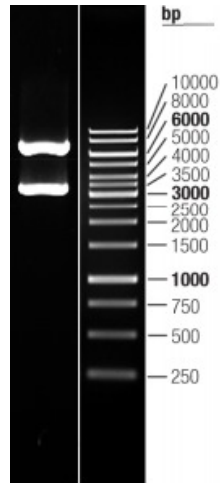
[View online >](#)

<b>OTI Disclaimer:</b>	The molecular sequence of this clone aligns with the gene accession number as a point of reference only. However, individual transcript sequences of the same gene can differ through naturally occurring variations (e.g. polymorphisms), each with its own valid existence. This clone is substantially in agreement with the reference, but a complete review of all prevailing variants is recommended prior to use. <a href="#">More info</a>
<b>OTI Annotation:</b>	This clone was engineered to express the complete ORF with an expression tag. Expression varies depending on the nature of the gene.
<b>Components:</b>	The ORF clone is ion-exchange column purified and shipped in a 2D barcoded Matrix tube containing 10ug of transfection-ready, dried plasmid DNA (reconstitute with 100 ul of water).
<b>Reconstitution Method:</b>	<ol style="list-style-type: none"><li>1. Centrifuge at 5,000xg for 5min.</li><li>2. Carefully open the tube and add 100ul of sterile water to dissolve the DNA.</li><li>3. Close the tube and incubate for 10 minutes at room temperature.</li><li>4. Briefly vortex the tube and then do a quick spin (less than 5000xg) to concentrate the liquid at the bottom.</li><li>5. Store the suspended plasmid at -20°C. The DNA is stable for at least one year from date of shipping when stored at -20°C.</li></ol>
<b>RefSeq:</b>	<a href="#">NM_004036.2</a>
<b>RefSeq Size:</b>	4410 bp
<b>RefSeq ORF:</b>	3435 bp
<b>Locus ID:</b>	109
<b>UniProt ID:</b>	<a href="#">O60266</a>
<b>Cytogenetics:</b>	2p23.3
<b>Domains:</b>	CYc
<b>Protein Families:</b>	Druggable Genome, Transmembrane
<b>Protein Pathways:</b>	Calcium signaling pathway, Chemokine signaling pathway, Dilated cardiomyopathy, Gap junction, GnRH signaling pathway, Melanogenesis, Olfactory transduction, Oocyte meiosis, Progesterone-mediated oocyte maturation, Purine metabolism, Vascular smooth muscle contraction, Vibrio cholerae infection
<b>MW:</b>	129 kDa
<b>Gene Summary:</b>	This gene encodes adenylyl cyclase 3 which is a membrane-associated enzyme and catalyzes the formation of the secondary messenger cyclic adenosine monophosphate (cAMP). This protein appears to be widely expressed in various human tissues and may be involved in a number of physiological and pathophysiological metabolic processes. Two transcript variants encoding different isoforms have been found for this gene. [provided by RefSeq, Feb 2016]

Product images:



Circular map for RC220272L1



Double digestion of RC220272L1 using SgfI-MluI