

## Product datasheet for RC219625

### COX8C (NM\_182971) Human Tagged ORF Clone

#### Product data:

**Product Type:** Expression Plasmids  
**Product Name:** COX8C (NM\_182971) Human Tagged ORF Clone  
**Tag:** Myc-DDK  
**Symbol:** COX8C  
**Synonyms:** COX8-3  
**Mammalian Cell Selection:** Neomycin  
**Vector:** pCMV6-Entry (PS100001)  
**E. coli Selection:** Kanamycin (25 ug/mL)  
**ORF Nucleotide Sequence:** >RC219625 ORF sequence  
 Red=Cloning site Blue=ORF Green=Tags(s)

TTTTGTAATACGACTCACTATAGGGCGCCGGGAATTCGTCGACTGGATCCGGTACCGAGGAGATCTGCC  
GCC**CGATCGCC**

**ATGCTCTCTGCGTGGGCGCTGTCTGCCGCCGCCACTACCGCCGCTTGGCCCTGCTCGGCCTGCAGC**  
**CCGCTCCCGCTTCGCCACTCGGGCCCCCGCCAGCGGCCCTGTCTGCCGCGAAATGGCTGTTGG**  
**ACTTGTGGTGTTTTTACGACCTTCTTAACACCAGCTGCATATGTGCTAGGCAACCTGAAGCAGTTCAGA**  
**AGGAAT**

**ACGCGTACGCGGCCGCTCGAGCAGAACTCATCTCAGAAGAGGATCTGGCAGCAAATGATATCCTGGATT**  
**ACAAGGATGACGACGATAAGGTTTAA**

**Protein Sequence:** >RC219625 protein sequence  
 Red=Cloning site Green=Tags(s)  
 MPLLRGRCPARRHYRRLALLGLQPAPRF AHS GPPRQRPLSAAEMAVGLVVFVFTFLTPAAYVLGNLQQR  
 RN

**TRTRPLEQKLISEEDLAANDILDYKDDDDKV**

**Chromatograms:** [https://cdn.origene.com/chromatograms/mk6448\\_g11.zip](https://cdn.origene.com/chromatograms/mk6448_g11.zip)

**Restriction Sites:** Sgfl-Mlul



[View online »](#)

**Cloning Scheme:**


**ACCN:** NM\_182971

**ORF Size:** 216 bp

**OTI Disclaimer:** The molecular sequence of this clone aligns with the gene accession number as a point of reference only. However, individual transcript sequences of the same gene can differ through naturally occurring variations (e.g. polymorphisms), each with its own valid existence. This clone is substantially in agreement with the reference, but a complete review of all prevailing variants is recommended prior to use. [More info](#)

**OTI Annotation:** This clone was engineered to express the complete ORF with an expression tag. Expression varies depending on the nature of the gene.

**Components:** The ORF clone is ion-exchange column purified and shipped in a 2D barcoded Matrix tube containing 10ug of transfection-ready, dried plasmid DNA (reconstitute with 100 ul of water).

**Reconstitution Method:**

1. Centrifuge at 5,000xg for 5min.
2. Carefully open the tube and add 100ul of sterile water to dissolve the DNA.
3. Close the tube and incubate for 10 minutes at room temperature.
4. Briefly vortex the tube and then do a quick spin (less than 5000xg) to concentrate the liquid at the bottom.
5. Store the suspended plasmid at -20°C. The DNA is stable for at least one year from date of shipping when stored at -20°C.

**RefSeq:** [NM\\_182971.3](#)

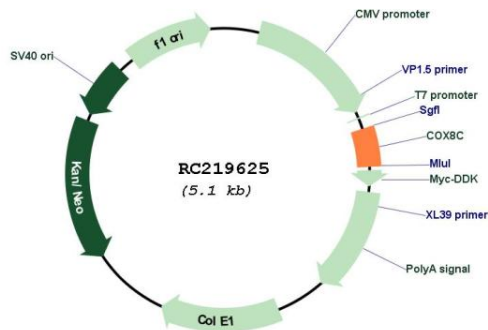
**RefSeq Size:** 531 bp

**RefSeq ORF:** 219 bp

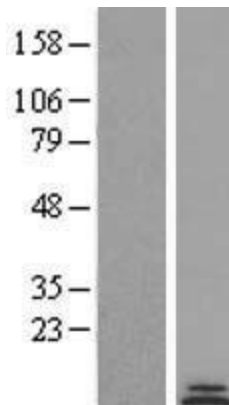
**Locus ID:** 341947

**UniProt ID:** [Q7Z4L0](#)  
**Cytogenetics:** 14q32.12  
**Protein Families:** Transmembrane  
**Protein Pathways:** Alzheimer's disease, Cardiac muscle contraction, Huntington's disease, Metabolic pathways, Oxidative phosphorylation, Parkinson's disease  
**MW:** 8.1 kDa  
**Gene Summary:** This protein is one of the nuclear-coded polypeptide chains of cytochrome c oxidase, the terminal oxidase in mitochondrial electron transport.[UniProtKB/Swiss-Prot Function]

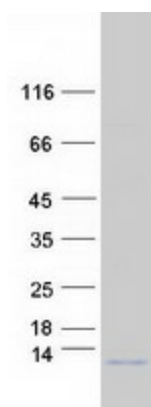
### Product images:



Circular map for RC219625



Western blot validation of overexpression lysate (Cat# [LY405286]) using anti-DDK antibody (Cat# [TA50011-100]). Left: Cell lysates from untransfected HEK293T cells; Right: Cell lysates from HEK293T cells transfected with RC219625 using transfection reagent MegaTran 2.0 (Cat# [TT210002]).



Coomassie blue staining of purified COX8C protein (Cat# [TP319625]). The protein was produced from HEK293T cells transfected with COX8C cDNA clone (Cat# RC219625) using MegaTran 2.0 (Cat# [TT210002]).