

## Product datasheet for RC219601

### IL6R (NM\_181359) Human Tagged ORF Clone

#### Product data:

Product Type:	Expression Plasmids
Product Name:	IL6R (NM_181359) Human Tagged ORF Clone
Tag:	Myc-DDK
Symbol:	IL6R
Synonyms:	CD126; gp80; HIES5; IL-1Ra; IL-6R; IL-6R-1; IL-6RA; IL6Q; IL6QTL; IL6RA; IL6RQ
Mammalian Cell Selection:	Neomycin
Vector:	pCMV6-Entry (PS100001)
E. coli Selection:	Kanamycin (25 ug/mL)
ORF Nucleotide Sequence:	>RC219601 ORF sequence Red=Cloning site Blue=ORF Green=Tags(s)

TTTTGTAATACGACTCACTATAGGGCGGCCGGAATTCGTCGACTGGATCCGGTACCGAGGAGATCTGCCGCCGCGATCGCC

ATGCTGGCCGTCGGCTGCGCGTCTGGCTGCCCTGCTGGCCGCGCCGGGAGCGGCTGGCCCCAAGGC  
GCTGCCCTGCGCAGGAGGTGGCGAGAGGCGTGTGACCAGTCTGCCAGGAGACAGCGTGACTCTGACCTG  
CCCGGGGTAGAGCCGGAAGACAATGCCACTGTTCACTGGGTGCTCAGGAAGCCGGCTGCAGGCTCCCAC  
CCCAGCAGATGGGCTGGCATGGGAAGGAGGCTGCTGCTGAGGTCGGTGCAGCTCCAGACTCTGAAACT  
ATTCATGCTACCGGGCCGCGCCAGCTGGGACTGTGCACTTGTGGTGGATGTTCCCCCGAGGAGCC  
CCAGCTCTCCTGCTTCCGGAAGAGCCCCCTCAGCAATGTTGTTGTGAGTGGGGTCTCGGAGCACCCCA  
TCCTGACGACAAAGGCTGTGCTCTTGGTGAAGAGTTTCAGAACAGTCCGGCCGAAGACTTCCAGGAGC  
CGTGCCAGTATCCCAGGAGTCCAGAAGTTCTCCTGCCAGTTAGCAGTCCCGGAGGAGACAGCTCTTT  
CTACATAGTGTCCATGTGCGTCGCCAGTGTGCGGGAGCAAGTTCAGCAAACTCAAACCTTTCAGGGT  
TGTGGAATCTTGACGCTGATCCGCTGCCAATCACAGTCACTGCCGTGGCCAGAAACCCCGCTGGC  
TCAGTGTACCTGGCAAGACCCCACTCCTGGAATCATCTTTTACAGACTACGGTTTGAGCTCAGATA  
TCGGGCTGAACGGTCAAAGACATTCACAACATGGATGGTCAAGGACCTCCAGCATCACTGTGTATCCAC  
GACGCTGGAGCGGCTGAGGCACGTGGTGCAGCTTCGTGCCAGGAGGAGTTCCGGCAAGGCGAGTGGA  
GCGAGTGGAGCCCGGAGGCCATGGGCACGCTTGGACAGAATCCAGGAGTCTCCAGCTGAGAACGAGGT  
GTCCACCCCATGCAGGCACTTACTACTAATAAAGACGATGATAATATTCTTTCAGAGATTCTGCAAT  
GCGACAAGCTCCAGGTTCAAGAAGACGTGGAAGCTGCGGGCTC

ACGCGTACGCGGCCGCTCGAGCAGAACTCATCTCAGAAGAGGATCTGGCAGCAATGATATCCTGGATT  
ACAAGGATGACGACGATAAGGTTAA



[View online »](#)

**Protein Sequence:** >RC219601 protein sequence  
Red=Cloning site Green=Tags(s)

MLAVGCALLAALLAAPGAALAPRRCPAQEVARGVLTSLPGDSVLTCPGVEPEDNATVHWVLRKPAAGSH  
 PSRWAGMGRRLLLRSVQLHDSGNYSYRAGRPAAGTVHLLVDVPPEEPQLSCFRKSPLSNVCEWGRPRSTP  
 SLTTKAVLLVRKFNQSPAEDFQEPQYSQESQKFSCQLAVPEGDSFYIIVSMCVASVSGSKFSKTQTFQG  
 CGILQPDPPANITVTAVARNPRWLSVTWQDPHSWNSSFYRLRFELRYRAERSKFTTWMVKDLQHHCVIH  
 DAWSLRHVVQLRAQEEFGQGEWSEWSEAMGTPWTESRSPPAENEVSTPMQALTTNKDDDNILFRDSAN  
 ATSLPGSRRRGSCGL

TRTRPLEQKLISEEDLAANDILDYKDDDDKV

**Chromatograms:** [https://cdn.origene.com/chromatograms/mk6456\\_h10.zip](https://cdn.origene.com/chromatograms/mk6456_h10.zip)

**Restriction Sites:** SgfI-MluI

**Cloning Scheme:**



**ACCN:** NM\_181359

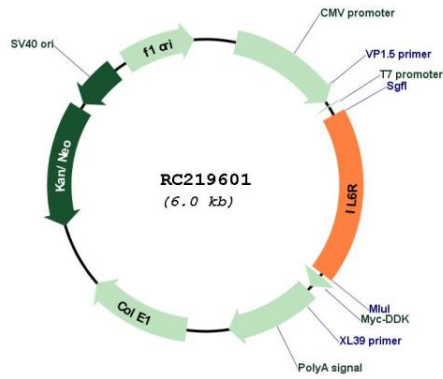
**ORF Size:** 1095 bp

**OTI Disclaimer:** Due to the inherent nature of this plasmid, standard methods to replicate additional amounts of DNA in E. coli are highly likely to result in mutations and/or rearrangements. Therefore, OriGene does not guarantee the capability to replicate this plasmid DNA. Additional amounts of DNA can be purchased from OriGene with batch-specific, full-sequence verification at a reduced cost. Please contact our customer care team at [custsupport@origene.com](mailto:custsupport@origene.com) or by calling 301.340.3188 option 3 for pricing and delivery.

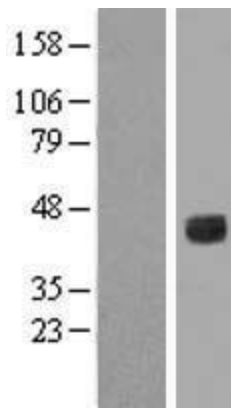
The molecular sequence of this clone aligns with the gene accession number as a point of reference only. However, individual transcript sequences of the same gene can differ through naturally occurring variations (e.g. polymorphisms), each with its own valid existence. This clone is substantially in agreement with the reference, but a complete review of all prevailing variants is recommended prior to use. [More info](#)

<b>OTI Annotation:</b>	This clone was engineered to express the complete ORF with an expression tag. Expression varies depending on the nature of the gene.
<b>Components:</b>	The ORF clone is ion-exchange column purified and shipped in a 2D barcoded Matrix tube containing 10ug of transfection-ready, dried plasmid DNA (reconstitute with 100 ul of water).
<b>Reconstitution Method:</b>	<ol style="list-style-type: none"><li>1. Centrifuge at 5,000xg for 5min.</li><li>2. Carefully open the tube and add 100ul of sterile water to dissolve the DNA.</li><li>3. Close the tube and incubate for 10 minutes at room temperature.</li><li>4. Briefly vortex the tube and then do a quick spin (less than 5000xg) to concentrate the liquid at the bottom.</li><li>5. Store the suspended plasmid at -20°C. The DNA is stable for at least one year from date of shipping when stored at -20°C.</li></ol>
<b>RefSeq:</b>	<a href="#">NM_181359.3</a>
<b>RefSeq Size:</b>	5834 bp
<b>RefSeq ORF:</b>	1098 bp
<b>Locus ID:</b>	3570
<b>UniProt ID:</b>	<a href="#">P08887</a>
<b>Cytogenetics:</b>	1q21.3
<b>Protein Families:</b>	Druggable Genome, ES Cell Differentiation/IPS, Transmembrane
<b>Protein Pathways:</b>	Cytokine-cytokine receptor interaction, Hematopoietic cell lineage, Jak-STAT signaling pathway
<b>MW:</b>	40.2 kDa
<b>Gene Summary:</b>	This gene encodes a subunit of the interleukin 6 (IL6) receptor complex. Interleukin 6 is a potent pleiotropic cytokine that regulates cell growth and differentiation and plays an important role in the immune response. The IL6 receptor is a protein complex consisting of this protein and interleukin 6 signal transducer (IL6ST/GP130/IL6-beta), a receptor subunit also shared by many other cytokines. Dysregulated production of IL6 and this receptor are implicated in the pathogenesis of many diseases, such as multiple myeloma, autoimmune diseases and prostate cancer. Alternatively spliced transcript variants encoding distinct isoforms have been identified in this gene. A pseudogene of this gene is found on chromosome 9. [provided by RefSeq, Aug 2020]

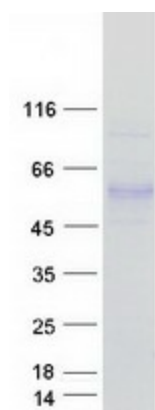
Product images:



Circular map for RC219601



Western blot validation of overexpression lysate (Cat# [LY405751]) using anti-DDK antibody (Cat# [TA50011-100]). Left: Cell lysates from untransfected HEK293T cells; Right: Cell lysates from HEK293T cells transfected with RC219601 using transfection reagent MegaTran 2.0 (Cat# [TT210002]).



Coomassie blue staining of purified IL6R protein (Cat# [TP319601]). The protein was produced from HEK293T cells transfected with IL6R cDNA clone (Cat# RC219601) using MegaTran 2.0 (Cat# [TT210002]).