

## Product datasheet for RC219435

### galectin 9 (LGALS9) (NM\_009587) Human Tagged ORF Clone

#### Product data:

Product Type:	Expression Plasmids
Product Name:	galectin 9 (LGALS9) (NM_009587) Human Tagged ORF Clone
Tag:	Myc-DDK
Symbol:	galectin 9
Synonyms:	HUAT; LGALS9A
Mammalian Cell Selection:	Neomycin
Vector:	pCMV6-Entry (PS100001)
E. coli Selection:	Kanamycin (25 ug/mL)
ORF Nucleotide Sequence:	>RC219435 representing NM_009587 Red=Cloning site Blue=ORF Green=Tags(s)

TTTTGTAATACGACTCACTATAGGGCGGCCGGAATTCGTCGACTGGATCCGGTACCGAGGAGATCTGCC  
GCC**CGATCGC**C

ATGGCCTTCAGCGGTTCCAGGCTCCCTACCTGAGTCCAGCTGTCCCCTTTCTGGGACTATTCAAGGAG  
GTCTCCAGGACGGACTTCAGATCACTGTCAATGGGACCGTTCTCAGCTCCAGTGGAAACAGGTTTGTCTGT  
GAACCTTCAGACTGGCTTCAGTGGAAATGACATTGCCTCCACTCAACCCTCGGTTTGAAGATGGAGGG  
TACGTGGTGTGCAACACGAGGCAGAACGGAAGCTGGGGGCCGAGGAGAGGAAGACACACATGCCTTTCC  
AGAAGGGGATGCCCTTTGACCTCTGCTTCTGGTGCAGAGCTCAGATTTCAAGGTGATGGTGAACGGGAT  
CCTCTTTCGTGCAGTACTCCACCGGTGCCCTTCCACCGTGTGGACACCATCTCCGTCAATGGCTCTGTG  
CAGCTGTCTACATCAGCTTCCAGAACCCCGCACAGTCCCTGTTCCAGCTGCCTTCTCCACGGTGCCTG  
TCTCCAGCCTGTCTGTTTCCACCCAGGCCAGGGGGCGCAGACAAAAACCTCCCGCGCTGTGGCCTGC  
CAACCCGGCTCCCATTACCCAGACAGTCATCCACACAGTGCAGAGCGCCCTGGACAGATGTTTCTACT  
CCCGCCATCCCACCTATGATGTACCCCAACCCCGCCTATCCGATGCCTTTCATCACCACCATCTGGGAG  
GGCTGTACCCATCCAAGTCCATCCTCCTGTCAGGCACTGTCTGCCAGTGTCTCAGAGGTTCCACATCAA  
CCTGTGCTCTGGGAACCATCGCTTCCACCTGAACCCCGTTCATGAGAATGCTGTGGTCCGCAAC  
ACCCAGATCGACAACCTGGGGTCTGAGGAGCGAAGTCTGCCCGAAAAATGCCCTTCGTCGGTGGCC  
AGAGCTTCTCAGTGTGGATCTTGTGTGAAGCTCACTGCCTCAAGGTGGCGTGGATGGTCAGCACCTGTT  
TGAATACTACCATCGCTGAGGAACCTGCCACCATCAACAGACTGGAAGTGGGGGGCGACATCCAGCTG  
ACCCATGTGCAGACA

**ACGCGT**ACGCGGCCGCTCGAGCAGAACTCATCTCAGAAGAGGATCTGGCAGCAATGATATCCTGGATT  
ACAAGGATGACGACGATAAGGTTAA



[View online »](#)

**Protein Sequence:** >RC219435 representing NM\_009587  
 Red=Cloning site Green=Tags(s)

MAFSGSQAPYLSPAVPFSGTIQGGLQDGLQITVNGTVLSSSGTRFAVNFQTGFSGNDIAFHFNPRFEDGG  
 YVVCNTRQNGSWGPEERKTHMPFQKGMFDFCLVQSSDFKVMVNGILFVQYFHRVPPFHRVDTISVNGSV  
 QLSYISFQNPRTVPVQPAFSTVPFSQPVCFFPRPRGRRQKPPGVWPANPAPITQTVIHTVQSAPGQMFS  
 PAIPMMYHPAYPMPFITITLGLYPSKILLSGTVLPSAQRFHINLCSGNHIAFHNLNPRFDENAVVRN  
 TQIDNSWGSEERSLPRKMPFVRGQSFVWILCEAHCLKVAVDGQHLFEYHRLRNLPINRLEVGDIQL  
 THVQT

TRTRPLEQKLISEEDLAANDILDYKDDDDKV

**Chromatograms:** [https://cdn.origene.com/chromatograms/mk8054\\_a08.zip](https://cdn.origene.com/chromatograms/mk8054_a08.zip)

**Restriction Sites:** SgfI-MluI

**Cloning Scheme:**



**ACCN:** NM\_009587

**ORF Size:** 1065 bp

**OTI Disclaimer:** The molecular sequence of this clone aligns with the gene accession number as a point of reference only. However, individual transcript sequences of the same gene can differ through naturally occurring variations (e.g. polymorphisms), each with its own valid existence. This clone is substantially in agreement with the reference, but a complete review of all prevailing variants is recommended prior to use. [More info](#)

**OTI Annotation:** This clone was engineered to express the complete ORF with an expression tag. Expression varies depending on the nature of the gene.

**Components:** The ORF clone is ion-exchange column purified and shipped in a 2D barcoded Matrix tube containing 10ug of transfection-ready, dried plasmid DNA (reconstitute with 100 ul of water).

**Reconstitution Method:**

1. Centrifuge at 5,000xg for 5min.
2. Carefully open the tube and add 100ul of sterile water to dissolve the DNA.
3. Close the tube and incubate for 10 minutes at room temperature.
4. Briefly vortex the tube and then do a quick spin (less than 5000xg) to concentrate the liquid at the bottom.
5. Store the suspended plasmid at -20°C. The DNA is stable for at least one year from date of shipping when stored at -20°C.

**RefSeq:** [NM\\_009587.3](#)

**RefSeq Size:** 1696 bp

**RefSeq ORF:** 1068 bp

**Locus ID:** 3965

**UniProt ID:** [O00182](#)

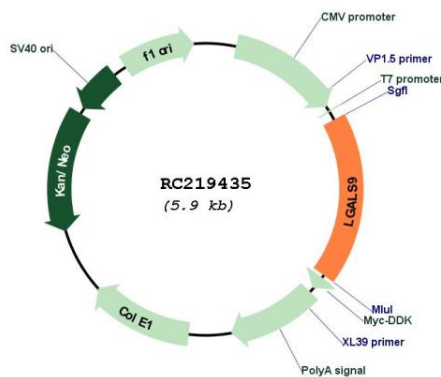
**Cytogenetics:** 17q11.2

**Domains:** Gal-bind\_lectin

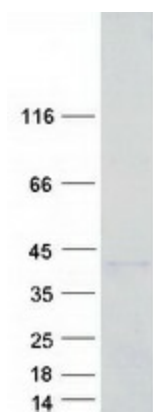
**MW:** 39.3 kDa

**Gene Summary:** The galectins are a family of beta-galactoside-binding proteins implicated in modulating cell-cell and cell-matrix interactions. The protein encoded by this gene is an S-type lectin. It is overexpressed in Hodgkin's disease tissue and might participate in the interaction between the H&RS cells with their surrounding cells and might thus play a role in the pathogenesis of this disease and/or its associated immunodeficiency. Multiple alternatively spliced transcript variants have been found for this gene. [provided by RefSeq, Jul 2008]

### Product images:



Circular map for RC219435



Coomassie blue staining of purified LGALS9 protein (Cat# [TP319435]). The protein was produced from HEK293T cells transfected with LGALS9 cDNA clone (Cat# RC219435) using MegaTran 2.0 (Cat# [TT210002]).