

Product datasheet for **RC219374**

FYN (NM_153047) Human Tagged ORF Clone

Product data:

Product Type:	Expression Plasmids
Product Name:	FYN (NM_153047) Human Tagged ORF Clone
Tag:	Myc-DDK
Symbol:	FYN
Synonyms:	p59-FYN; SLK; SYN
Mammalian Cell Selection:	Neomycin
Vector:	pCMV6-Entry (PS100001)
E. coli Selection:	Kanamycin (25 ug/mL)



[View online »](#)

ORF Nucleotide Sequence:

>RC219374 representing NM_153047
 Red=Cloning site Blue=ORF Green=Tags(s)

TTTTGTAATACGACTCACTATAGGGCGGCCGGAATTCGTCGACTGGATCCGGTACCGAGGAGATCTGCC
 GCC**CGGATCGCC**

ATGGGCTGTGTGCAATGTAAGGATAAAGAAGCAACAAACTGACGGAGGAGAGGGACGGCAGCCTGAACC
 AGAGCTCTGGGTACCGCTATGGCACAGACCCACCCTCAGCACTACCCAGCTTCGGTGTGACCTCCAT
 CCCAACTACAACAACCTCCACGCAGCCGGGGCCAAGGACTCACCGTCTTTGGAGGTGTAACCTTTCG
 TCTCATACGGGGACCTTGCGTACGAGAGGAGAACAGGAGTGACACTCTTTGTGGCCCTTATGACTATG
 AAGCACGGACAGAAGATGACCTGAGTTTTACAAAGGAGAAAAATTTCAAATATTGAACAGCTCGGAAGG
 AGATTGGTGGGAAGCCCGCTCCTTGACAACCTGGAGAGACAGGTTACATCCAGCAATTATGTGGCTCCA
 GTTGACTCTATCCAGGCAGAAGAGTGGTACTTTGGAAAACCTGGCCGAAAAGATGCTGAGCGACAGCTAT
 TGTCTTTGAAACCCAAGAGGTACCTTTCTTATCCGCGAGAGTGAAACCACAAAGGTGCCTATCACT
 TTCTATCCGTGATTGGGATGATATGAAAGGAGACCATGTCAAACATTATAAAATTCGCAAACCTTGACAAT
 GGTGGATACTACATTACCACCCGGGCCAGTTTGAACACTTCAGCAGCTGTACAACATTACTCAGAGA
 AAGCTGATGGTTTGTGTTTAACTTAAGTGTGATTGCATCGAGTTGTACCCACAAAACCTTCTGGATTGGC
 TAAAGATGCTTGGGAAGTTGCACGTCGTTCTGTGTCTGGAGAAGAAGCTGGGTGAGGGGTGTTTCGCT
 GAAGTGTGGCTTGGTACCTGGAATGGAACACAAAAGTAGCCATAAAGACTCTTAAACCAGGCACAATGT
 CCCCCGAATCATTCTTGAGGAAGCGCAGATCATGAAGAAGCTGAAGCAGCACAAGCTGGTCCAGCTCTA
 TGCAGTGGTGTCTGAGGAGCCATCTACATCGTACCCAGTATATGAACAAAGGAAGTTTACTGGATTTC
 TAAAAGATGGAGAAGGAAGAGCTCTGAAATACCAAATCTTGTGGACATGGCAGCACAGGTGGCTGCAG
 GAATGGCTTACATCGAGCGCATGAATTATATCCATAGAGATCTGGATCAGCAAACATTTAGTGGGGAA
 TGGACTCATATGCAAGATTGCTGACTTCGGATTGGCCCGATTGATAGAAGACAATGAGTACACAGCAAGA
 CAAGGTGCAAAGTTCCCATCAAGTGGACGGCCCGGAGGCAGCCCTGTACGGGAGGTTACAATCAAGT
 CTGACGTGTGGTCTTTGGAATCTTACTCACAGAGCTGGTACCACAAAGGAAGAGTGCCATACCCAGGCAT
 GAACAACCGGGAGGTGCTGGAGCAGGTGGAGCGAGGCTACAGGATGCCCTGCCCGCAGGACTGCCCCATC
 TCTCTGCATGAGCTCATGATCCACTGCTGGAAAAGGACCCTGAAGAACGCCCACTTTTGAGTACTTGC
 AGAGCTTCTGGAAGACTACTTTACCGCAGACAGAGCCCCAGTATCAACCTGGTAAAACCTG

ACGCGTACGCGGCCGCTCGAGCAGAACTCATCTCAGAAGAGGATCTGGCAGCAAATGATATCTGGATT
 ACAAGGATGACGACGATAAGGTTTAA

Protein Sequence:

>RC219374 representing NM_153047
 Red=Cloning site Green=Tags(s)

MGCVQCKDKEATKLTEERDGLNQSSGYRYGTDPTPQHYPYSGVTSIPNYNNFHAAGGQGLTVFGGVNSS
 SHTGTLRTRGGTGVTLFVALYDYEARTEDDL SFHKGEKFQILNSSEGDWWEARSLTGETGYIPSNYVAP
 VDSIQAEWYFGKLRKDAERQLLSFGNPRGTFLIRESETTKGAYSL SIRDWDDMKGDHVKHYKIRKLDN
 GGYITTRAQFETLQQLVQHYSEKADGLCFNLTVIASSCTPQTSGLAKDAWEVARRSLCLEKKGQGCFA
 EVWLGWTWNGNTKVAIKTLKPGTMSPEFLEEAIQIMKCLKHDKLVQLYAVVSEEPYIYVTEYMNKGSLLDF
 LKDGEGRALKLPNLVDMAAQVAAGMAYIERMNYIHRDLRSANILVGNGLICKIADFLARLIEDNEYTAR
 QGAKFPIKWTAPEAALYGRFTIKSDVWSFGILL TELVTKGRVPYPMNREVLEQVERGYRMPQPDCPI
 SLHELMIHWCWKDPEERPTFEYLSFLEDYFTATEPQYQGENL

TRTRPLEQKLISEEDLAANDILDYKDDDDKV

Chromatograms:

https://cdn.origene.com/chromatograms/mg2611_d05.zip

Restriction Sites:

Sgfl-MluI

Cloning Scheme:

ACCN: NM_153047

ORF Size: 1602 bp

OTI Disclaimer: Due to the inherent nature of this plasmid, standard methods to replicate additional amounts of DNA in E. coli are highly likely to result in mutations and/or rearrangements. Therefore, OriGene does not guarantee the capability to replicate this plasmid DNA. Additional amounts of DNA can be purchased from OriGene with batch-specific, full-sequence verification at a reduced cost. Please contact our customer care team at custsupport@origene.com or by calling 301.340.3188 option 3 for pricing and delivery.

The molecular sequence of this clone aligns with the gene accession number as a point of reference only. However, individual transcript sequences of the same gene can differ through naturally occurring variations (e.g. polymorphisms), each with its own valid existence. This clone is substantially in agreement with the reference, but a complete review of all prevailing variants is recommended prior to use. [More info](#)

OTI Annotation: This clone was engineered to express the complete ORF with an expression tag. Expression varies depending on the nature of the gene.

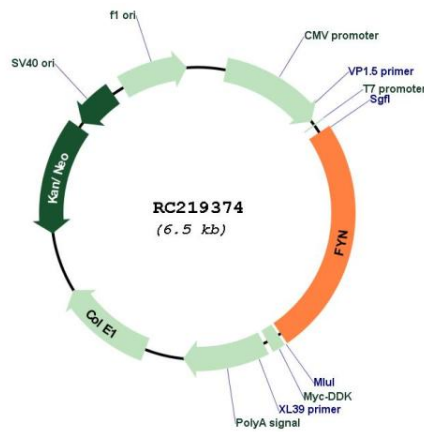
Components: The ORF clone is ion-exchange column purified and shipped in a 2D barcoded Matrix tube containing 10ug of transfection-ready, dried plasmid DNA (reconstitute with 100 ul of water).

- Reconstitution Method:**
1. Centrifuge at 5,000xg for 5min.
 2. Carefully open the tube and add 100ul of sterile water to dissolve the DNA.
 3. Close the tube and incubate for 10 minutes at room temperature.
 4. Briefly vortex the tube and then do a quick spin (less than 5000xg) to concentrate the liquid at the bottom.
 5. Store the suspended plasmid at -20°C. The DNA is stable for at least one year from date of shipping when stored at -20°C.

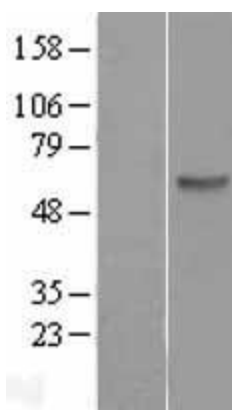
RefSeq: [NM_153047.4](#)

RefSeq Size:	2073 bp
RefSeq ORF:	1605 bp
Locus ID:	2534
UniProt ID:	P06241
Cytogenetics:	6q21
Protein Families:	Druggable Genome, Protein Kinase
Protein Pathways:	Adherens junction, Axon guidance, Fc epsilon RI signaling pathway, Focal adhesion, Natural killer cell mediated cytotoxicity, Pathogenic Escherichia coli infection, Prion diseases, T cell receptor signaling pathway, Viral myocarditis
MW:	60 kDa
Gene Summary:	This gene is a member of the protein-tyrosine kinase oncogene family. It encodes a membrane-associated tyrosine kinase that has been implicated in the control of cell growth. The protein associates with the p85 subunit of phosphatidylinositol 3-kinase and interacts with the fyn-binding protein. Alternatively spliced transcript variants encoding distinct isoforms exist. [provided by RefSeq, Jul 2008]

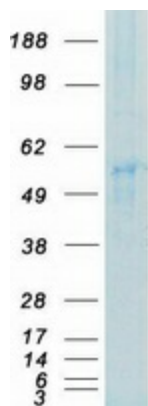
Product images:



Circular map for RC219374



Western blot validation of overexpression lysate (Cat# [LY403505]) using anti-DDK antibody (Cat# [TA50011-100]). Left: Cell lysates from untransfected HEK293T cells; Right: Cell lysates from HEK293T cells transfected with RC219374 using transfection reagent MegaTran 2.0 (Cat# [TT210002]).



Coomassie blue staining of purified FYN protein (Cat# [TP319374]). The protein was produced from HEK293T cells transfected with FYN cDNA clone (Cat# RC219374) using MegaTran 2.0 (Cat# [TT210002]).