

## Product datasheet for RC219083

### PP2A-beta (PPP2CB) (NM\_004156) Human Tagged ORF Clone

#### Product data:

Product Type:	Expression Plasmids
Product Name:	PP2A-beta (PPP2CB) (NM_004156) Human Tagged ORF Clone
Tag:	Myc-DDK
Symbol:	PP2A-beta
Synonyms:	A115466; D8Ert766e; PP2Ac; PP2CB; protein phosphatase 2 (formerly 2A), catalytic subunit, beta isoform; protein phosphatase 2a, catalytic subunit, beta isoform
Mammalian Cell Selection:	Neomycin
Vector:	pCMV6-Entry (PS100001)
E. coli Selection:	Kanamycin (25 ug/mL)
ORF Nucleotide Sequence:	>RC219083 representing NM_004156 Red=Cloning site Blue=ORF Green=Tags(s)

TTTTGTAATACGACTCACTATAGGGCGGCCGGAATTCGTCGACTGGATCCGGTACCGAGGAGATCTGCC  
GCCGCGATCGCC

ATGGACGACAAGGCGTTACCAAGGAGCTGGACCAGTGGGTCGAGCAGCTGAACGAGTGTAAAGCAGCTGA  
ACGAGAACCAAGTGGGACGCTGTGCGAGAAGGCAAAGGAAATTTAACAAAAGAATCAAATGTGCAAGA  
GGTTCGTTGCCCTGTTACTGTCTGTGGAGATGTGCATGGTCAATTTTCATGATCTTATGGAACCTTTAGA  
ATTGGTGGAAAATCACCGGATACAACTACTTATTCATGGGTGACTATGTAGACAGAGGATATTATTCAG  
TGGAGACTGTGACTCTTCTGTAGCATTAAAGGTGCGTTATCCAGAACGCATTACAATATTGAGAGGAAA  
TCACGAAAGCCGACAAATACCCAAGTATATGGCTTTTATGATGAATGTCTGCGAAAGTATGGGAATGCC  
AACGTTTGGAAAATTTTACAGATCTCTTGTATTATCTTCCACTTACAGCTTTAGTAGATGGACAGATAT  
TCTGCCTCCATGGTGGCCTCTCTCCATCCATAGACACACTGGATCATATAAGAGCCCTGGATCGTTTACA  
GGAAGTCCACATGAGGGCCCAATGTGTGATCTGTTATGGTCAGATCCAGATGATCGTGGTGGATGGGGT  
ATTTACCACGTTGGTGGCTACACATTTGGACAAGACATTTCTGAAACCTTTAACCATGCCAATGGTC  
TCACACTGGTTTTCTGTGCCACCAGCTTGTAAATGGAGGGATACAATTGGTGTATGATCGGAATGTGGT  
TACCATTTTCAGTGCACCAATTAATGTTATCGTTGTGGGAACAGGCTGCTATCATGGAATTAGATGAC  
ACTTTAAAATATTCCTTCTTCAATTTGACCCAGCGCCTCGTGTGGTGTGAGCCTCATGTTACACGGCGCA  
CCCAGACTACTCCTA

ACGCGTACGCGGCCGCTCGAGCAGAACTCATCTCAGAAGAGGATCTGGCAGCAAATGATATCCTGGATT  
ACAAGGATGACGACGATAAGGTTTAA



[View online »](#)



**Reconstitution Method:**

1. Centrifuge at 5,000xg for 5min.
2. Carefully open the tube and add 100ul of sterile water to dissolve the DNA.
3. Close the tube and incubate for 10 minutes at room temperature.
4. Briefly vortex the tube and then do a quick spin (less than 5000xg) to concentrate the liquid at the bottom.
5. Store the suspended plasmid at -20°C. The DNA is stable for at least one year from date of shipping when stored at -20°C.

**RefSeq:** [NM\\_004156.2](#), [NP\\_004147.1](#)

**RefSeq Size:** 1807 bp

**RefSeq ORF:** 929 bp

**Locus ID:** 5516

**Cytogenetics:** 8p12

**Domains:** Metallophos, PP2Ac

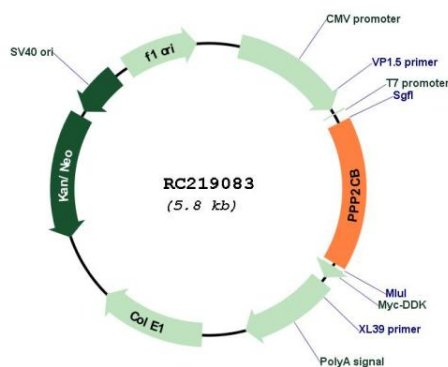
**Protein Families:** Druggable Genome, Phosphatase

**Protein Pathways:** Long-term depression, Oocyte meiosis, TGF-beta signaling pathway, Tight junction, Wnt signaling pathway

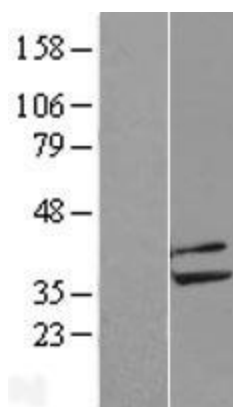
**MW:** 35.4 kDa

**Gene Summary:** This gene encodes the phosphatase 2A catalytic subunit. Protein phosphatase 2A is one of the four major Ser/Thr phosphatases, and it is implicated in the negative control of cell growth and division. It consists of a common heteromeric core enzyme, which is composed of a catalytic subunit and a constant regulatory subunit, that associates with a variety of regulatory subunits. This gene encodes a beta isoform of the catalytic subunit. [provided by RefSeq, Mar 2010]

### Product images:



Circular map for RC219083



Western blot validation of overexpression lysate (Cat# [LY418183]) using anti-DDK antibody (Cat# [TA50011-100]). Left: Cell lysates from untransfected HEK293T cells; Right: Cell lysates from HEK293T cells transfected with RC219083 using transfection reagent MegaTran 2.0 (Cat# [TT210002]).