

Product datasheet for RC218354

PIK3C2B (NM_002646) Human Tagged ORF Clone

Product data:

Product Type:	Expression Plasmids
Product Name:	PIK3C2B (NM_002646) Human Tagged ORF Clone
Tag:	Myc-DDK
Symbol:	PIK3C2B
Synonyms:	C2-PI3K
Mammalian Cell Selection:	Neomycin
Vector:	pCMV6-Entry (PS100001)
E. coli Selection:	Kanamycin (25 ug/mL)
ORF Nucleotide Sequence:	>RC218354 representing NM_002646 Red=Cloning site Blue=ORF Green=Tags(s)

TTTTGTAATACGACTCACTATAGGGCGGCCGGAATTCGTCGACTGGATCCGGTACCGAGGAGATCTGCC
GCC**CGATCGCC**

ATGTCTTCGACTCAGGACAATGGGAACACTGGAAGTCCCTGGAGTCAGTGGGCATCAGCCGAAAGAGC
TAGCGATGGCCGAAGCCCTGCAGATGGAGTATGATGCCCTGTCCCGCTCCGGCATGACAAGGAGGAGAA
CAGAGCCAAGCAGAACGCAGACCCCTCTCTCATCAGCTGGGATGAGCCTGGGGTAGACTTTTACAGCAAG
CCAGCAGGAAGGGCGACCGACCTCAAGCTGTTACGCGGTCTCTCTGGCTCTGATCCTACCCTAACTACA
ACTCACTCTCCACAGGAAGGGCCGCCAACCTCTACCTCCCAAGGGCCACAGCCTGGCTCAGATCC
CTGGCCCAAAGGCTCCCTGTCTGGAGACTATCTCTACATTTTGTATGGTTTCAGATGGGGGAGTCTCTTCG
TCCCCAGGACCAGGGGACATAGAGGGCTCTTGCAAGAACTATCCCCACCTCCTCTGCCTCCCCGAGCTT
CTATCTGGGATACCCCTCCCTGCCTCCAGAAAGGGTCCCCCTCATCTCCAAGATCTCCAGCCAG
TGACATCAACACTTTCTTTGGTGAACAATTGCCGGGCAAAGTCTAGAGCATCGGATCCTAGAAGAG
GAAGAGGTGCTGGGAGGTGGGGTCAAGGGCGCCTACTGGGGTCTGTGGACTATGATGGTATCAATGATG
CAATTAAGGCTCAACTTGAATCGACCTATGATGCGGAGATGTTGCGGGATGCCACAGGGGCTGGAA
GGAGGGCCGAGGGCCGCTGGACTTCAGCAAAGACACCTCTGAAAACCCGTGGCCAGGAGCAAGACTATG
CCCCCTCAGGTGCCCCCGCACCTATGCCTCCCGCTATGGCAACCGAAAGAAATGGCAGCCTGACAAGA
ACCGCCGATTTCTGCAGCCCGGTGGGCTCCCGGCCACACTGTTGCCAATGGCCATGAGTTGTTTGA
GGTCTCAGAAGAGAGAGATGAGGAGGTTGCTGCATTTTGGCACATGCTGGATATCCTTCGATCTGGCTCT
GACATCCAAGACTACTTCTCACTGGCTATGTCTGGAGTCTGTACCCCTAGCCAGAGCACCTCGGGG
ATGAGGTCAACCTGAAGGTGACTGTGTTGTGTGACAGGCTTCAAGAGGCACTCACTTTCACCTGCAACTG
TTCCTCCACTGTAGACTTGCTTATCTACCAGACCTGTGCTACCCCATGATGACCTGAGGAATGTGGAC
GTGGGTGACTTTGTGCTAAAGCCCTGCGGGCTGGAGGAGTTCTGCAGAACAGCATGCCTTGGGCAGTC
ATGAGTACATCCAATACTGCCGCAAGTTTGACATTGACATTGCGGTACAGCTGATGGAGCAGAAGGTTGT
GCGCAGTGACCTGGCCCGACGGTGAATGATGACCAGAGCCCTCCACCTTGAACACTCTGTCATCTC



[View online >](#)

CAAGAGAGGCCTGTCAAGCAGACCATCAGCAGGCAGGCCCTGAGTCTTCTGTTTCGACACTTACCACAATG
AGGTGGATGCCTTCTGCTGGCTGATGGAGACTTCCCCTGAAGGCTGACAGGGTGGTCCAGTCCGTC
GGCCATCTGCAACGCCCTGGCCGCGTGGAAACCCTGAGATCACCAGTGTCTCAACCAGCTGCCCCC
TGCCCCCTCCCGCATGCAGCTAAATTCAGAAGGATCCCAGTGTCTTGGCTGTGAGGGAAAACCGAGAGA
AGGTCTGGAAGCCCTGACCGCTGCCATCTTGGACCTGGTGGAGCTGTACTGCAACACATTCAACGCAGA
CTTCCAGACGGCAGTCCCGGGAGCCGAAGCATGACCTGGTCCAGGAGGCTGCCATTTCCGACGGTCC
CTGGCCTTTACTGTCTATGCCACCCACCGCATCCCCATCATCTGGGCTACCAGCTATGAAGATTTCTACC
TCTCCTGCTCCCTCAGCCATGGCGGCAAGGAGCTGTGCAGCCCCCTGCAGACCCGAAGAGCTCACTTCTC
CAAGTACCTCTTCCACCTCATCGTCTGGGACCAGCAGATCTGCTTCCAGTGCAGGTGAACCGGCTGCCT
CGGGAGACACTGCTGTGTGCCACTCTCTATGCTCTGCCATCCCCCACCAGGGAGCTCCTCAGAGGCCA
ATAAGCAGCGGGGTCCTGAAGCCCTGGGCTGGTCACTACCCACTCTTCAACTTCCAGGAGGTCTT
GACCTGTGGCCGAAGCTTCTGGGTTTGTGGCCAGCAACACAGGAAAATCCAGCGCCCCGTTGGAGTGCA
CCTAATTTCCACCAGCCAGACAGTGTATCCTGCAGATTGACTTCCCACCTCGGCTTTGACATCAAGT
TCACCAGCCCCCTGGAGACAAGTTCAGCCCCGCTATGAGTTTGGCAGCCTCCGGGAAGAAGACCAGCG
CAAGCTTAAAGACATCATGCAGAAAGAGTCTTGTACTGGCTCACTGATGCTGACAAGAAGCGCCTGTGG
GAGAAGCGATATTACTGCCACTCGGAGGTGAGCTCGCTCCCCCTGGTGCCTGCCAGCGCCCCAGCTGGG
AGTGGGCTTGCTGCCTGACATCTATGTTCTCCTGAAGCAGTGGACCCACATGAACCACCAGGATGCCCT
GGGGCTCCTGCATGCCACCTTCCCGACCAGGAGGTGCGTCGATGGCTGTGCAGTGGATTGGCTCACTC
TCAGATGCTGAGCTGCTAGACTACCTGCCCCAGCTGGTACAGGCCCTGAAGTATGAATGCTACCTGGACA
GCCCCGTTGGTGCCTTCTCCTGAAACGAGCTGTGTCTGACTTGAGAGTACTACTACTTCTTCTGGTT
ACTGAAGGACGGCCTCAAGGACTCTCAGTTCAGCATCCGCTACCAGTATCTGCTGGCAGCCTTACTGTGC
TGCTGTGGCAAGGGGCTGAGAGAAGAGTTAACCGCCAGTGTGGCTTGTCAATGCCCTGGCCAAACTGG
CCAGCAGGTCCGGGAGGCAGCCCCATCGCAAGGCAGGAATCCTCCGACGGGCTGGGAAAGTGAAG
GCAGTTCTTGGCCTCAATGGCTCGTGGCTTGGCACTCAGCCCCAGTCTGCTGGTTAAGGGAATTGTG
CCCAGGGACTGTTCTACTTCAACTCCAATGCTGTCCCCCTCAAACCTCTCCTTCCAAAATGTGGATCCCC
TGGGTGAGAACATCCGTGTCTTCAAGTGTGGGACGACCTTCCGACAGGACATGCTAACGCTGCAGAT
GATTCGCATCATGAGCAAGATCTGGGTCCAGGAGGGGCTGGACATGCGCATGGTCTCTTCCGCTGCTTC
TCCACCGCCGGGGCAGAGGGATGGTGGAGATGATCCCTAATGCTGAGACCCTGCGTAAGATCCAGGTGG
AGCATGGGGTACCGGCTCGTTCAAGGACCGGCCCTGGCAGACTGGCTGCAGAAACACAACCTGGGGA
GGACGAGTATGAGAAGGCTGTGGAGAACTTATCTACTCTGCGTGGCTGCTGCGTGGCCAGTACGTC
TTGGGCATCTGTGACCGACATAACGACAACATCATGCTGAAGACCCTGGTACATGTTCCACATTGATT
TTGGCCGCTTCTGGGCCATGCCAGATGTTTGGCAACATCAAGCGGGACCGTGCCTTGTCTTCCAC
CTCGGACATGGCGTATGTCATCAACGGGGTGACAAGCCTTCCAGCCGCTTCCATGATTTTGTGACCTT
TGCTGCCAAGCCTACAACCTCATTGCAAGCACACCCACCTTCTCCTCAACCTTCTGGGCTGATGTTGT
CCTGTGGGATCCCTGAACCTCAGACCTGGAGGACCTCAAGTATGTGTACGATGCCCTGAGGCTCAGGA
TACAGAGGCCAATGCCACTACCTACTTCACTAGGTTGATTGAGTCCAGCCTGGCAGTGTAGCCACAAG
CTCAATTTTTTTCATCCATAATCTGGCTCAGATGAAGTTCACGGGCTCAGATGACCGGCTGACCTCTCCT
TGGCTCCCGAACACACACTCTCAAGAGCTCTGGCCGAATCAGTGTGTTTTCTCTGCCCATGAGAA
GATCTTCCACCCCAACAAGGCTATATATGTGGTAAAGGTGATGCGAGAGAACACTCAGGAGGCCACC
TACATCCAGCGGACCTTTGAGGAGTTCAGGAATTACACAATAAGTTGCGGCTGCTTCCCTTCTTCCC
ACTTGGCCAGCTTCCCTAGTCGTTCTGATCGGCCGCTCCCGGGAGAGGCGGTGGCCGAGCGGGAG
GGAGGAGCTAAACGTTACATCTGGCACTTGTCCACGCACCCCTGAGGTGGCCGAGTGTGATTTGGTG
TACACCTTCTTCCACCCACTGCCCGGGATGAGAAGGCTATGGGCACCAGCCAGCTCCTAAGTCTCAG
ATGGCACATGGGCCGGCCGTCGGAAGGTGGGAGGGGAGGTGAAGCTGTCCATCTCTACAAAAACAA
TAAACTTTCATCATGGTGTGATGATATTCGGGCTTGAACCTGCTCCAGGATGGAATGACCCTGACCCC
TATGTGAAAATTTACCTCCTTCTGACCCTCAGAAAACCACTAAGAGGAAAACAAAGTGGCCCGGAAAA
CCTGCAATCCTACCTACAATGAGATGTTGGTATATGATGGGATCCCCAAGGTTGACTGCAGCAGCGGGA
GCTCCAGCTGAGCGTGTGAGTGAAGCAGGATTCTGGGAGAAGCTCCTCCTCGGTGAGGTGAACATCCGC
CTGCGAGAGCTGGACCTGGCTCAGGAGAAGACCGGCTGGTTCCGCTGGGATCTCGAAGTATGGACCT
TG

ACGCGTACGCGGCCGCTCGAGCAGAACTCATCTCAGAAGAGGATCTGGCAGCAATGATATCCTGGATT

ACAAGGATGACGACGATAAGGTTTAA

Protein Sequence:

>RC218354 representing NM_002646
 Red=Cloning site Green=Tags(s)

MSSTQDNGEHWSLESVGI SRKELAMAEALQMEYDAL SRLRHDKEENRAKQADPSLISWDEPGVDFYSK
 PAGRRITDLKLLRGLSGSDPTLNYNLSLSPQEGPNHSTSQGPQPGSDPWPKGSLSGDYLYIFDGSDDGVSS
 SPGPGDIEGSCCKLSPPLPPRASIWDTPPLPPRKGPSSSKISQPSDINTFSLVEQLPGKLLHEHRILEE
 EEVLGGGGQGRLLGSVDYDGINDAITRLNLKSTYDAEMLRDATRGWKEGRPLDFSKDTSKGKPVARSKT
 PPQVPPRTYASRYGNRNATPDKNRRISAAPVGSRPHTVANGHELFEVSEERDEEVAAFCHMLDILRSGS
 DIQDYFLTGYVWSAVTPSPEHLGDEVNLKVTVLCDRLQEALETTCNCSSVTDLLIYQTLCYTHDDLNRVD
 VGDFVLKPCGLEEFLQNKHALGSHEYIQYCRKFDIDIRLQLMEQKVVRSDLARTVNDQSPSTLNYL VHL
 QERPVKQTI SRQALSLLFDYHNEVDAFLADGDFPLKADRQVQSVKAI CNALAAVETPEITSALNQLPP
 CPSRMQPKIQKDPVLA VRENREKVV EAL TAAILD LVELYCN TFNADFQTAVPGSRKHDLVQEACHFARS
 LAFTVYATHRIP I I WATSYEDFYLSCSLSHGKELCSPLQTRRAHF SKYLFHLIVWDQQICFPVQVNRLP
 RETLLCATLYALPIPPPGSSSEANKQRRVPEALGWVTTPLFNFRQVLTGCRKLLGLWPATQENPSARWSA
 PNHFQPDVILQIDFPTSAFDIKFTSPPGDKFSRPRYEFGLSREEDQRKLDIMQKESLYWLTADKKRLW
 EKRYCHSEVSSPLVLASAPSEWACLPIYVLLKQWTHMNHQDALGLLHATFPDQEVRRMAVQWIGSL
 SDAELLDYLPQLVQALKYECYLDSPVRFLLKRAVSDLRVTHYFFWLLKDGKDSQFSIRYQYLLAALLC
 CCGKGLREEFNRCWL VNALAKLAQQVREAA PSARQGI LRTGLEEVKQFFALNGSCLPLSPSLLVKGIV
 PRDCSYFNSNAVPLKLSFQNVDP LGENIRVIFKCGDDL RQDML TLMIRIMSKIWVQEGLDMRMVFRCF
 STGRGRGMVEMIPNAETLRKIQVEHGVTSFKDRPLADWLQKHNPGEDEYEKAVENFIYSCAGCCVATYV
 LGICDRHNDNIMLKT TGHMFI DFG RFLGHAQMFGNIKRDRAPVFTSDMAYVINGGDKPSSRFHDFVLD
 CCQAYNLRKHTHLFLNLLGLMLSCGIPELSDLEDLKYVYDALRPQDTEANATTYFTRLIESSLSGVATK
 LNFFIHNLAQMKFTGSDRLLTFSASRTHLTKSSGRISDVFLCRHEKIFHPNKGYYVVKVMRENTHEAT
 YIQRTFEFQELHNKLRLLFPSSHLPSFSPRFVIGRSRGEAVERREELNGYIWHLIHAPPEVAECDLV
 YTFHPLPRDEKAMGTSPAPKSSDGTWARPVGKVGGEVKLSISYKNNKLFIMVMHIRGLQLLQDGNDDP
 YVKIYLLPDPQKTTKRKT VARKTCNPTYNEMLVYDGIPKGDLLQRELQLSVLSEQGFWENVLLGEVNIR
 LRELDLAQEK TGWFALGSRSHGTL

TRTRPLEQKLI SEEDLAANDILDYKDDDDKV

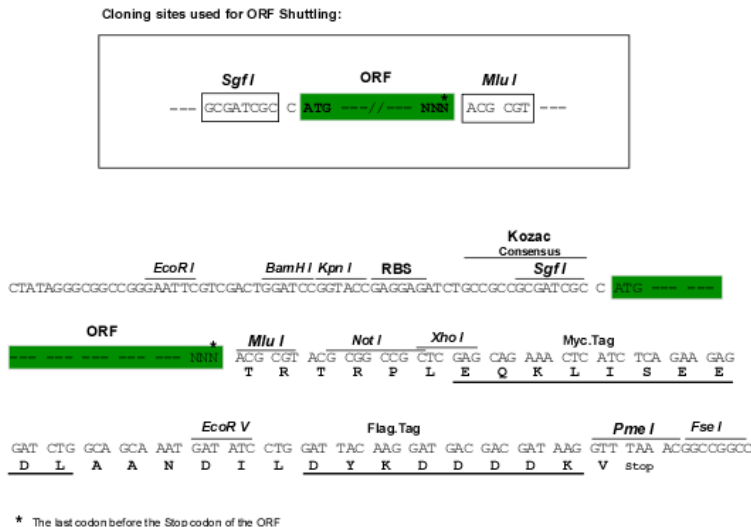
Chromatograms:

https://cdn.origene.com/chromatograms/mk6285_e07.zip

Restriction Sites:

SgfI-MluI

Cloning Scheme:

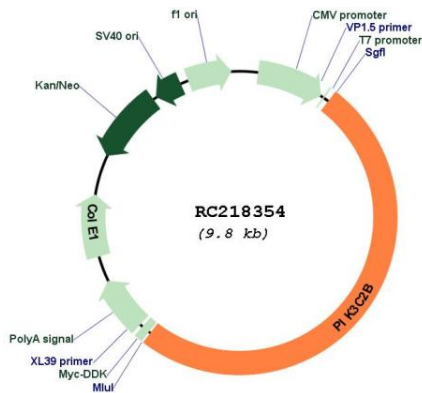


ACCN:	NM_002646
ORF Size:	4902 bp
OTI Disclaimer:	<p>Due to the inherent nature of this plasmid, standard methods to replicate additional amounts of DNA in E. coli are highly likely to result in mutations and/or rearrangements. Therefore, OriGene does not guarantee the capability to replicate this plasmid DNA. Additional amounts of DNA can be purchased from OriGene with batch-specific, full-sequence verification at a reduced cost. Please contact our customer care team at custsupport@origene.com or by calling 301.340.3188 option 3 for pricing and delivery.</p> <p>The molecular sequence of this clone aligns with the gene accession number as a point of reference only. However, individual transcript sequences of the same gene can differ through naturally occurring variations (e.g. polymorphisms), each with its own valid existence. This clone is substantially in agreement with the reference, but a complete review of all prevailing variants is recommended prior to use. More info</p>
OTI Annotation:	This clone was engineered to express the complete ORF with an expression tag. Expression varies depending on the nature of the gene.
Components:	The ORF clone is ion-exchange column purified and shipped in a 2D barcoded Matrix tube containing 10ug of transfection-ready, dried plasmid DNA (reconstitute with 100 ul of water).
Reconstitution Method:	<ol style="list-style-type: none"> 1. Centrifuge at 5,000xg for 5min. 2. Carefully open the tube and add 100ul of sterile water to dissolve the DNA. 3. Close the tube and incubate for 10 minutes at room temperature. 4. Briefly vortex the tube and then do a quick spin (less than 5000xg) to concentrate the liquid at the bottom. 5. Store the suspended plasmid at -20°C. The DNA is stable for at least one year from date of shipping when stored at -20°C.
RefSeq:	NM_002646.4
RefSeq Size:	7618 bp
RefSeq ORF:	4905 bp
Locus ID:	5287
UniProt ID:	O00750
Cytogenetics:	1q32.1
Protein Families:	Druggable Genome
Protein Pathways:	Inositol phosphate metabolism, Metabolic pathways, Phosphatidylinositol signaling system
MW:	184.6 kDa

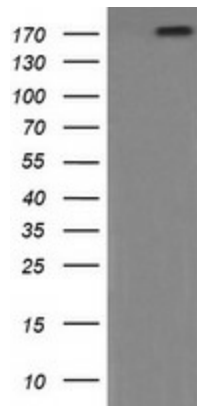
Gene Summary:

The protein encoded by this gene belongs to the phosphoinositide 3-kinase (PI3K) family. PI3-kinases play roles in signaling pathways involved in cell proliferation, oncogenic transformation, cell survival, cell migration, and intracellular protein trafficking. This protein contains a lipid kinase catalytic domain as well as a C-terminal C2 domain, a characteristic of class II PI3-kinases. C2 domains act as calcium-dependent phospholipid binding motifs that mediate translocation of proteins to membranes, and may also mediate protein-protein interactions. The PI3-kinase activity of this protein is sensitive to low nanomolar levels of the inhibitor wortmanin. The C2 domain of this protein was shown to bind phospholipids but not Ca²⁺, which suggests that this enzyme may function in a calcium-independent manner. [provided by RefSeq, Jul 2008]

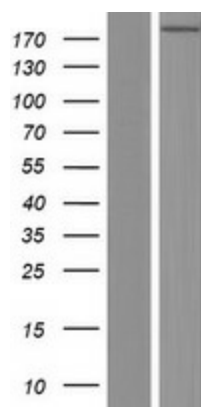
Product images:



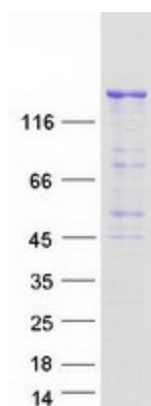
Circular map for RC218354



HEK293T cells were transfected with the pCMV6-ENTRY control (Cat# [PS100001], Left lane) or pCMV6-ENTRY PIK3C2B (Cat# RC218354, Right lane) cDNA for 48 hrs and lysed. Equivalent amounts of cell lysates (5 ug per lane) were separated by SDS-PAGE and immunoblotted with anti-PIK3C2B (Cat# [TA506052]). Positive lysates [LY419185] (100ug) and [LC419185] (20ug) can be purchased separately from OriGene.



Western blot validation of overexpression lysate (Cat# [LY419185]) using anti-DDK antibody (Cat# [TA50011-100]). Left: Cell lysates from untransfected HEK293T cells; Right: Cell lysates from HEK293T cells transfected with RC218354 using transfection reagent MegaTran 2.0 (Cat# [TT210002]).



Coomassie blue staining of purified PIK3C2B protein (Cat# [TP318354]). The protein was produced from HEK293T cells transfected with PIK3C2B cDNA clone (Cat# RC218354) using MegaTran 2.0 (Cat# [TT210002]).