

Product datasheet for RC218236

SOX1 (NM_005986) Human Tagged ORF Clone

Product data:

Product Type:	Expression Plasmids
Product Name:	SOX1 (NM_005986) Human Tagged ORF Clone
Tag:	Myc-DDK
Symbol:	SOX1
Mammalian Cell Selection:	Neomycin
Vector:	pCMV6-Entry (PS100001)
E. coli Selection:	Kanamycin (25 ug/mL)
ORF Nucleotide Sequence:	>RC218236 representing NM_005986 Red=Cloning site Blue=ORF Green=Tags(s)

TTTTGTAATACGACTCACTATAGGGCGGCCGGGAATTCGTCGACTGGATCCGGTACCGAGGAGATCTGCC
GCC**CGATCGCC**

ATGTACAGCATGATGATGGAGACCGACCTGCACTCGCCCGGGCGGCCAGGCCCCACGAACCTCTCGG
GCCCGCCGGGGCGGGCGGGCGGGGGCGGAGGCCGGGGCGGGCGGGCGGGGGCGCCAAAGGCCAA
CCAGGACCGGGTCAAACGGCCATGAACGCCTTCATGGTGTGGTCCCAGGGCAGCGGCCAAGATGGCC
CAGGAGAACCCCAAGATGCACAACCTCGGAGATCAGCAAGCGCTGGGGCCGAGTGAAGGTCATGTCCG
AGGCCGAGAAGCGCGTTCATCGACGAGGCCAAGCGGCTGCGCGCTGCACATGAAGGAGCACCCGGA
TTACAAGTACCGCCGCGCCGAAGACCAAGACGCTGCTCAAGAAGGACAAGTACTCGCTGGCCGGCGGG
CTCCTGGCGGCCGGCGGGTGGCGGGCGCGGCTGTGGCCATGGGCGTGGGCGTGGGCGTGGGCGCGG
CGGCCGTGGGCCAGCGCCTGGAGAGCCAGGCGGCGGGCGGGCGGGTACGCGCACGTCAACGGCTG
GGCCAACGGCGCCTACCCCGGCTCGGTGGCGGGCGGGCGGGCGGGCCATGATGCAGGAGGCGCAG
CTGGCCTACGGGCAGCACCCGGGCGGGCGGGCGCACCCGCGCACCCCGCGCACCCCGCACCCGC
ACCACCCGACGCGCACCCGCACAACCCGAGCCATGCACCGCTACGACATGGGCGCGTGCAGTACAG
CCCCATCTCCAACCTCGAGGGCTACATGAGCGCTCGCCCTCGGGCTACGGCGGCTCCCCTACGGCGCC
GCGGCCGCGCCCGCCGCTGCGGGCGGGCGCGCACCCAGAACTCGGCCGTGGCGGGCGGGCGGGCGGG
CGGCCCGCTCGTGGGGCGCCCTGGGCGGCTGGGCTCTCTGGTGAAGTCGGAGCCAGCGGAGCCCGCC
CGCCCCAGCGCACTCGCGGGCGCGTGGCCCGGGACCTGCGCGAGATGATCAGCATGTACTTGGCCCGC
GGCGAGGGGGGCGACCCGGCGGGCGGCGAGCGGCCGGCGCGAGAGCCGGTGCCTCGCTGCCGAGC
ACTACCAGGGCGGGCGGGCGGGTGAACGGCACGGTGCCTGACGCACATC

AG**CGGACCG**ACGCGTACGCGGCCGCTCGAGCAGAACTCATCTCAGAAGAGGATCTGGCAGCAAATGATATCC
TGGATTACAAGGATGACGACGATAAGGTTAA



[View online »](#)

Protein Sequence: >RC218236 representing NM_005986
 Red=Cloning site Green=Tags(s)

MYSMMMETDLHSPGGAQAPTNLSPGAGAGGGGGGGGGGGGGGAKANQDRVKRPMNAFMVWSRGQRKMA
 QENPKMHNSEISKRLGAEWKVMSEAEKRPFIDEAKRLRALHMKEHPDYKYRPRRKTLLKDKYSLAGG
 LLAAGAGGGGAAVAMGVGVGAAAVGQRLESPGGAAGGGYAHVNGWANGAYPGSVAAAAAAAAAMMQEAQ
 LAYGQHPGAGGAHPHAHPAHPHPHPHAHPHPNPQPMHRYDMGALQYSPISNSQGYMSASPSGYGGLPYGA
 AAAAAAAAAAGGAHQNSAVAAAAAAAAAASSGALGALGSLVKSEPSGSPAPAHSRAPCPGDLREMISMYLPA
 GEGGDPAAAAAAAAQSRHLHSLPQHYQGAGAVNGTVPLTHI

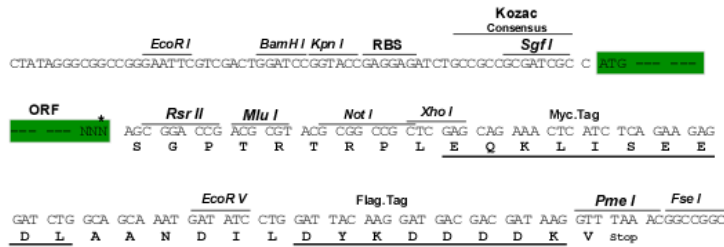
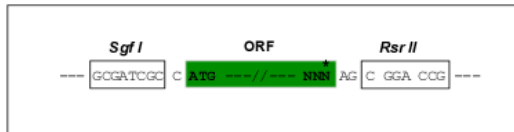
SGPTRTRRLEQKLISEEDLAANDILDYKDDDDKV

Chromatograms: https://cdn.origene.com/chromatograms/mg2396_e12.zip

Restriction Sites: SgfI-RsrII

Cloning Scheme:

Cloning sites used for ORF Shutting:



* The last codon before the Stop codon of the ORF

ACCN: NM_005986

ORF Size: 1173 bp

OTI Disclaimer: The molecular sequence of this clone aligns with the gene accession number as a point of reference only. However, individual transcript sequences of the same gene can differ through naturally occurring variations (e.g. polymorphisms), each with its own valid existence. This clone is substantially in agreement with the reference, but a complete review of all prevailing variants is recommended prior to use. [More info](#)

OTI Annotation: This clone was engineered to express the complete ORF with an expression tag. Expression varies depending on the nature of the gene.

Components: The ORF clone is ion-exchange column purified and shipped in a 2D barcoded Matrix tube containing 10ug of transfection-ready, dried plasmid DNA (reconstitute with 100 ul of water).

Reconstitution Method:

1. Centrifuge at 5,000xg for 5min.
2. Carefully open the tube and add 100ul of sterile water to dissolve the DNA.
3. Close the tube and incubate for 10 minutes at room temperature.
4. Briefly vortex the tube and then do a quick spin (less than 5000xg) to concentrate the liquid at the bottom.
5. Store the suspended plasmid at -20°C. The DNA is stable for at least one year from date of shipping when stored at -20°C.

RefSeq: [NM_005986.3](#)

RefSeq Size: 4108 bp

RefSeq ORF: 1176 bp

Locus ID: 6656

UniProt ID: [O00570](#)

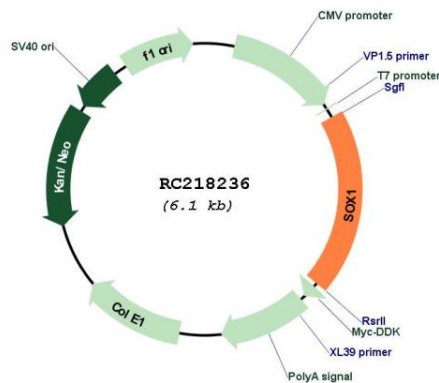
Cytogenetics: 13q34

Protein Families: Adult stem cells, ES Cell Differentiation/IPS, Induced pluripotent stem cells, Transmembrane

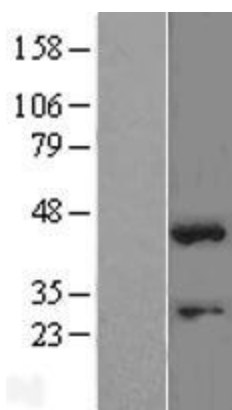
MW: 38.8 kDa

Gene Summary: This intronless gene encodes a member of the SOX (SRY-related HMG-box) family of transcription factors involved in the regulation of embryonic development and in the determination of the cell fate. The encoded protein may act as a transcriptional activator after forming a protein complex with other proteins. In mice, a similar protein regulates the gamma-crystallin genes and is essential for lens development. [provided by RefSeq, Jul 2008]

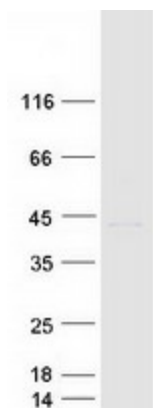
Product images:



Circular map for RC218236



Western blot validation of overexpression lysate (Cat# [LY401812]) using anti-DDK antibody (Cat# [TA50011-100]). Left: Cell lysates from untransfected HEK293T cells; Right: Cell lysates from HEK293T cells transfected with RC218236 using transfection reagent MegaTran 2.0 (Cat# [TT210002]).



Coomassie blue staining of purified SOX1 protein (Cat# [TP318236]). The protein was produced from HEK293T cells transfected with SOX1 cDNA clone (Cat# RC218236) using MegaTran 2.0 (Cat# [TT210002]).