

Product datasheet for RC218076

SYTL2 (NM_032379) Human Tagged ORF Clone

Product data:

Product Type:	Expression Plasmids
Product Name:	SYTL2 (NM_032379) Human Tagged ORF Clone
Tag:	Myc-DDK
Symbol:	SYTL2
Synonyms:	CHR11SYT; EXO4; SGA72M; SLP2; SLP2A
Mammalian Cell Selection:	Neomycin
Vector:	pCMV6-Entry (PS100001)
E. coli Selection:	Kanamycin (25 ug/mL)
ORF Nucleotide Sequence:	>RC218076 representing NM_032379 Red=Cloning site Blue=ORF Green=Tags(s)

TTTTGTAATACGACTCACTATAGGGCGGCCGGAATTCGTCGACTGGATCCGGTACCGAGGAGATCTGCC
GCC**CGATCGCC**

ATGAGCAAGTCTGTTCCAGCATTCTCCAAGATGAGAGTGATGACAGAGAAACAGATACAGCATCAGAAA
GCAGTTACCAGCTCAGCAGACACAAGAAGACCCGAGCTCTTTAACCAATCTTAGCAGCTCCTCTGGCAT
GACGTCCTTGCTTCTGTGAGTGGCAGTGTGATGAGTGTATAGTGGAGACTTTGGCAATCTGGAAGTT
AAAGGAAATATTCAGTTTGAATTGAATATGTGGAGTCACTGAAGGAGTTGCATGTTTTGTGGCCAGT
GTAAGGACTTAGCAGCAGCGGATGTAAAAAACAGCGTTCAGACCCATATGTAAAGGCCTATTTGCTACC
AGACAAAGGCAAAATGGGCAAGAAGAAAACACTCGTAGTGAAGAAAACCTTGAATCCTGTGTATAACGAA
ATACTGCGGTATAAAATTGAAAAACAAATCTTAAAGACACAGAAATTGAACCTGTCCATTTGGCATCGGG
ATACATTTAAGCGCAATAGTTTCTAGGGGAGGTGGAACCTTGATTTGAAACATGGGACTGGGATAACAA
ACAGAATAACAATTGAGATGGTACCCTCTGAAGCGGAAGACAGCACCAGTTGCCCTTGAAGCAGAAAAAC
AGAGGTGAAATGAACTAGCTCTCCAGTATGTCCAGAGCCAGTCCCTGGTAAAAAGCTTCTACAACCTG
GAGAAGTGCACATCTGGGTGAAGGAATGCCTTGATCTACCACTGCTAAGGGGAAGTCATCTAAATCTTT
TGTTAAATGTACCATCCTCCAGATAACAAGTAGGAAAAGTCGCCAGAAGACAAGAGCTGTAGGGAAAAC
ACCAACCTATCTCAACCACACTATGGTGTATGATGGGTTCAAGCCTGAAGATCTGATGGAAGCCTGTG
TAGAGCTTACTGTCTGGGACCATTACAAATTAACCAACCAATTTTGGGAGGTCTTCGTATTGGCTTTGG
AACAGGTAAAAGTTATGGGACTGAAGTGGACTGGATGGACTCTACTTCAGAGGAAGTTGCTCTGGGAG
AAGATGGTAAACTCCCCAATACTTGGATTGAAGCAACACTGCCTCTCAGAATGCTTTTGATTGCCAAGA
TTTCCAAA

ACGCGTACGCGGCCGCTCGAGCAGAAACTCATCTCAGAAGAGGATCTGGCAGCAATGATATCCTGGATT
ACAAGGATGACGACGATAAGGTTTAA



[View online »](#)

Protein Sequence: >RC218076 representing NM_032379
Red=Cloning site Green=Tags(s)

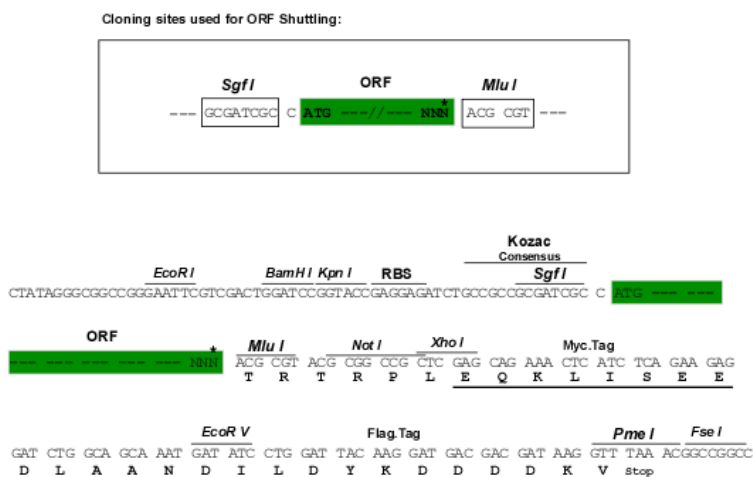
MSKSVP AFLQDESDDRETDTASESSYQLSRHKKSPSSLTNLSSSSGMTSLSSVSGSVMSVYSGDFGNLEV
 KGNIQFAIEYVESLKHVHVAQCKDLAAADVKKQRSDPYVKAYLLPDKGKMGKKKTLVVKKTLNPVYNE
 ILRYKIEKQILKTQKLNLSIWHRDTFKRNSFLGEVELDLETWDWLNKQNKQLRWYPLKRKTAPVALEAEN
 RGMKLLALQYVPEPVPGKKLPTTGEVHIWYKECLDLPLLRGSHLSFVKCTILPDTSRKSRQKTRAVGKT
 TNPIFNHTMVYDGRPEDLMEACVELTVWDHYKLTNQFLGGLRIGFGTGKSYGTEVDWMDSTSEEVALWE
 KMNSPNTWIEATLPLRMLLIKISK

TRTRPLEQKLISEEDLAANDILDYKDDDDKV

Chromatograms: https://cdn.origene.com/chromatograms/mk6594_b04.zip

Restriction Sites: SgfI-MluI

Cloning Scheme:



* The last codon before the Stop codon of the ORF

ACCN: NM_032379

ORF Size: 1128 bp

OTI Disclaimer: The molecular sequence of this clone aligns with the gene accession number as a point of reference only. However, individual transcript sequences of the same gene can differ through naturally occurring variations (e.g. polymorphisms), each with its own valid existence. This clone is substantially in agreement with the reference, but a complete review of all prevailing variants is recommended prior to use. [More info](#)

OTI Annotation: This clone was engineered to express the complete ORF with an expression tag. Expression varies depending on the nature of the gene.

Components: The ORF clone is ion-exchange column purified and shipped in a 2D barcoded Matrix tube containing 10ug of transfection-ready, dried plasmid DNA (reconstitute with 100 ul of water).

Reconstitution Method:

1. Centrifuge at 5,000xg for 5min.
2. Carefully open the tube and add 100ul of sterile water to dissolve the DNA.
3. Close the tube and incubate for 10 minutes at room temperature.
4. Briefly vortex the tube and then do a quick spin (less than 5000xg) to concentrate the liquid at the bottom.
5. Store the suspended plasmid at -20°C. The DNA is stable for at least one year from date of shipping when stored at -20°C.

RefSeq: [NM_032379.3](#), [NP_115755.2](#)

RefSeq Size: 2407 bp

RefSeq ORF: 1130 bp

Locus ID: 54843

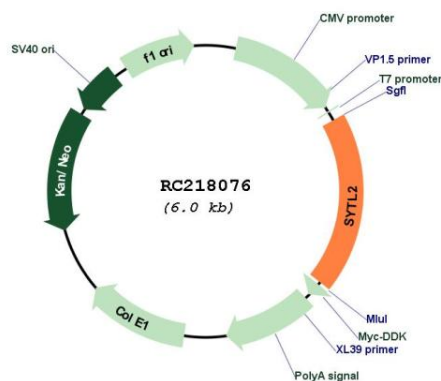
Cytogenetics: 11q14.1

Domains: C2

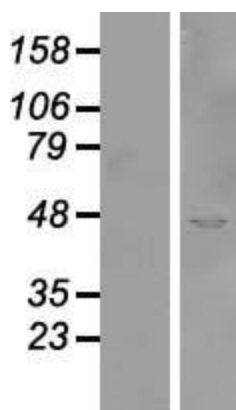
MW: 42.6 kDa

Gene Summary: The protein encoded by this gene is a synaptotagmin-like protein (SLP) that belongs to a C2 domain-containing protein family. The SLP homology domain (SHD) of this protein has been shown to specifically bind the GTP-bound form of Ras-related protein Rab-27A (RAB27A). This protein plays a role in RAB27A-dependent vesicle trafficking and controls melanosome distribution in the cell periphery. Alternative splicing results in multiple transcript variants encoding distinct isoforms.[provided by RefSeq, Jun 2009]

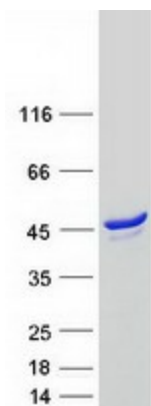
Product images:



Circular map for RC218076



Western blot validation of overexpression lysate (Cat# [LY410172]) using anti-DDK antibody (Cat# [TA50011-100]). Left: Cell lysates from untransfected HEK293T cells; Right: Cell lysates from HEK293T cells transfected with RC218076 using transfection reagent MegaTran 2.0 (Cat# [TT210002]).



Coomassie blue staining of purified SYTL2 protein (Cat# [TP318076]). The protein was produced from HEK293T cells transfected with SYTL2 cDNA clone (Cat# RC218076) using MegaTran 2.0 (Cat# [TT210002]).