

## Product datasheet for **RC217684**

### **PYK2 (PTK2B) (NM\_173175) Human Tagged ORF Clone**

#### **Product data:**

Product Type:	Expression Plasmids
Product Name:	PYK2 (PTK2B) (NM_173175) Human Tagged ORF Clone
Tag:	Myc-DDK
Symbol:	PYK2
Synonyms:	CADTK; CAKB; FADK2; FAK2; PKB; PTK; PYK2; RAFTK
Mammalian Cell Selection:	Neomycin
Vector:	pCMV6-Entry (PS100001)
E. coli Selection:	Kanamycin (25 ug/mL)



[View online »](#)

**ORF Nucleotide Sequence:**

>RC217684 representing NM\_173175  
 Red=Cloning site Blue=ORF Green=Tags(s)

TTTTGTAATACGACTCACTATAGGGCGGCCGGAATTCGTCGACTGGATCCGGTACCGAGGAGATCTGCC  
 GCC**CGCATCGCC**

ATGTCTGGGGTGTCCGAGCCCTGAGTCGAGTAAAGTTGGGCACGTTACGCCGCCCTGAAGGCCCTGCAG  
 AGCCCATGGTGGTACCAGTAGATGTGGAAAAGGAGGACGTGCGTATCCTCAAGGTCTGCTTCTATAG  
 CAACAGCTTCAATCCTGGGAAAACTTCAAAGTGGTCAAATGCACTGTCCAGACGGAGATCCGGGAGATC  
 ATCACCTCCATCCTGCTGAGCGGGCGGATCGGGCCCAACATCCGTTGGCTGAGTGTATGGGCTGAGGC  
 TGAAGCACATGAAGTCCGATGAGATCCACTGGCTGCACCCACAGATGACGGTGGGTGAGGTGCAGGACAA  
 GTATGAGTGTCTGCACGTGGAAGCCGAGTGGAGGTATGACCTTCAAATCCGCTACTTGCCAGAAGACTTC  
 ATGGAGAGCCTGAAGGAGGACAGGACCACGCTGCTCTATTTTTACCAACAGCTCCGGAACGACTACATGC  
 AGCGCTACGCCAGCAAGGTGAGCGAGGGCATGGCCCTGCAGCTGGGCTGCCTGGAGCTCAGCGGTTCTT  
 CAAGGATATGCCCAACAATGCACCTTGAAGAAGTCAAACCTCGAGCTCCTAGAAAAGGAAGTGGGGCTG  
 GACTTGTTTTTCCCAAAGCAGATGCAGGAGAATTAAGCCCAAACAGTTCGGGAAGATGATCCAGCAGA  
 CCTTCCAGCAGTACGCCCTCGCTCAGGGAGGAGGTGCGTCATGAAGTCTTCAACACTCTCGCCGGCTT  
 CGCCAACATCGACCAGGAGACCTACCGCTGTGAACTCATTCAAGGATGGAACATTACTGTGGACCTGGTC  
 ATTGGCCCTAAAGGGATCCGCCAGCTGACTAGTCAGGACGCAAAGCCACCTGCCTGGCCGAGTTCAAGC  
 AGATCAGGTCCATCAGGTGCCTCCCGCTGGAGGAGGGCCAGGCAGTACTCAGCTGGGCATTGAAGGTGC  
 CCCCCAGGCCCTTGCCATCAAACCTCATCCCTAGCAGAGGCTGAGAATGGCTGACCTCATAGACGGC  
 TACTCGCGGTGACAGGTGAGCACCAAGGCTCTCTCATCATCCATCCTAGGAAAGATGGTGAAGCGGA  
 ACAGCCTGCCCCAGATCCCCATGCTAAACCTGGAGGCCCGCGGTTCCACCTCTCAGAGAGCTGCAGCAT  
 AGAGTCAGACATCTACGCAGAGATTCCCGACGAAACCCTGCGAAGGCCCGGAGGTCCACAGTATGGCATT  
 GCCCGTGAAGATGTGGTCTGAATCGTATTCTTGGGGAAGGCTTTTTTGGGAGGTCTATGAAGGTGCT  
 ACACAAATCACAAAGGGGAGAAAATCAATGTAGCTGTCAAGACCTGCAAGAAAGACTGCACTCTGGACAA  
 CAAGGAGAAGTTCATGAGCGAGGAGTATCATGAAGAACCTCGACCACCCGCACATCGTGAAGTGTATC  
 GGCATCATTGAAGAGGAGCCACCTGGATCATCATGGAATTGTATCCCTATGGGGAGCTGGGCCACTACC  
 TGGAGCGGAACAAGAATCCCTGAAGGTGCTCACCTCGTGTACTACTGCAGATATGCAAAGCCAT  
 GGCTACCTGGAGAGCATCAACTGCGTGCACAGGGACATTGCTGTCCGGAACATCCTGGTGCCTCCCT  
 GAGTGTGTGAAGTGGGGACTTTGGTCTTCCCGGTACATTGAGGACGAGGACTATTACAAAGCCTCTG  
 TGACTCGTCTCCCATCAAATGGATGTCCCCAGAGTCCATTAACCTCCGACGCTTACGACAGCCAGTGA  
 CGTCTGGATGTTCCGCGTGTGCATGTGGGAGATCCTGAGCTTTGGGAAGCAGCCCTTCTTGGCTGGAG  
 AACAAAGGATGTATCGGGGTGCTGGAGAAAGGAGACCGGCTGCCCAAGCCTGATCTCTGTCCACCGGTCC  
 TTTATACCCTCATGACCCGCTGCTGGGACTACGACCCAGTGACCGGCCCGCTTACCAGAGCTGGTGTG  
 CAGCCTCAGTGACGTTTATCAGATGGAGAAGGACATTGCCATGGAGCAAGAGAGGAATGCTCGTACCGA  
 ACCCCAAAATCTTGAGCCACAGCCTTCCAGGAACCCCAAGCCAGCCGACCTAAGTACAGAC  
 CCCCTCCGCAAACCACTCTGGCTCAAAGCTGCAGTTCAGGAGGAGGACTTCATCCAACCCAGCAG  
 CCGAGAAGAGGCCAGCAGCTGTGGGAGGCTGAAAAGGTCAAATGCGGCAAACTTGACAAACAGCAG  
 AAGCAGATGGTGGAGGACTACCAGTGGCTCAGGCAGGAGGAGAAGTCCCTGGACCCCATGGTTTATATGA  
 ATGATAAGTCCCATGACGCCAGAGAAGGAGGTGCGCTACCTGGAGTTCACAGGGCCCCACAGAAAGCC  
 CCCGAGGCTGGGCGCACAGTCCATCCAGCCACAGCTAACCTGGACCGGACTGATGACCTGGTGTACCTC  
 AATGTCATGGAGCTGGTGTGGGCGTGTGGAGCTCAAGAATGAGCTCTGTGAGTGCCTCCCGAGGGCT  
 ACGTGGTGGTGGTGAAGAATGTGGGCTGACCTGCGGAAGCTCATCGGGAGCGTGGATGATCTCCTGCC  
 TTCCTTGGCGTATCTTACGGACAGAGATCGAGGGCACCCAGAACTGCTCAACAAAGACCTGGCAGAG  
 CTCATCAACAAGATGCGGCTGGCACAGCAGAACCGGTGACCTCCCTAAGTGAGGAGTCAAGAGGCAGA  
 TGCTGACGGCTTACACACCCTGGCTGTGGACGCCAAGAACCTGCTGACGCTGTGGACCAGGCCAAGGT  
 TCTGGCCAATCTGGCCACCCACCTGCAGAG

**ACGCGT**ACGCGGCCGCTCGAGCAGAACTCATCTCAGAAGAGGATCTGGCAGCAAATGATATCCTGGATT  
 ACAAGGATGACGACGATAAGGTTTAA

**Protein Sequence:** >RC217684 representing NM\_173175  
 Red=Cloning site Green=Tags(s)

```

MSGVSEPLSRVKLGTLRRPEGPAEPMVVVVDVEKEDVRIKVKCFYSNSFNPGKNFKLVKCTVQTEIREI
ITSILLSGRIGPNIRLAECYGLRLKHKMSDEIHWLHPQMTVGEVQDKYECLHVEAEWRYDLQIRYLPEDF
MESLKEDRTLLYFYQQLRNDYMQRYASKVSEGMALQLGCELRFRFFKDMPHNALDKKSNFELLEKEVGL
DLFFPKQMQENLKPQFRKMIQQTFQQYASLREEECVMKFFNTLAGFANIDQETYRCELIQGWNITVDLV
IGPKGIRQLTSQDAKPTCLAEFKQIRSIIRCLPLEEGQAVLQLGIEGAPQALSIKTSSLAEAENMADLIDG
YCRQLQGEHQGSLIIHPRKDGEKRNSLPQIPMLNLEARRSHLSESCSIESDIYAEIPDETLLRRPGGPQYGI
AREDEVVLNRILGEGFFGEVYEGVYTNHKGEKINVAVKTCCKDCTLDNKEKFMSEAVIMKNLDHPHIVKLI
GIIIEEPTWIIMELYPYGELGHYLERNKNSLKVLTLLVYSLQICKAMAYLESINCVHRDIAVRNIVASP
ECVKLGDFGLSRVIEDEDYKASVTRLPKIKWSPESINFRFTTASDVMMFAVCMWEILSFGKQPFWLE
NKDVIQVLEKGDRLPKPDLPPVLYTLMTRCWDYDPSDRPRFTLVCSLSDVYQMEKDIAMEQERNARYR
TPKILEPTAFQEPKPSRPKYRPPQTNLLAPKLQFQEEFIQPSRREEAQQLEAEKVKMRQILDKQKQ
KQMVEDYQWLRQEEKSLDPMVYMNDKSPLEPEVGYLEFTGPPQKPPRLGAQSIQPTANLDRDLDLVL
NYMELVWAVLELKNELCQLPPEGVYVVVKNVGLTLRKLIGSVDDLPLSPSSRTEIEGTQKLLNKDLAE
L.I.N.K.M.R.L.A.Q.Q.N.A.V.T.S.L.S.E.E.C.K.R.Q.M.L.T.A.S.H.T.L.A.V.D.A.K.N.L.L.D.A.V.D.Q.A.K.V.L.A.N.L.A.H.P.P.A.E
  
```

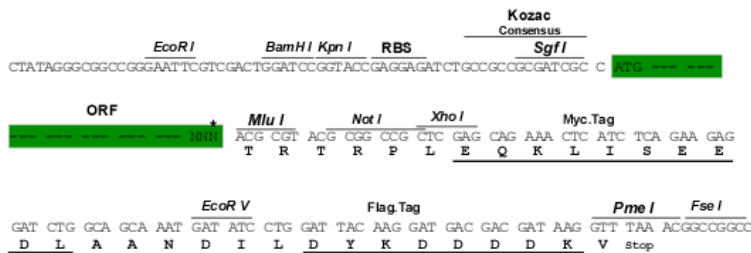
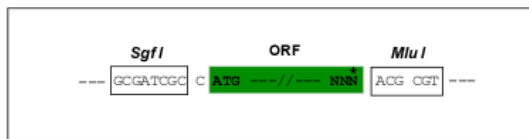
TRTRPLEQKLISEEDLAANDILDYKDDDDKV

**Chromatograms:** [https://cdn.origene.com/chromatograms/mg4189\\_d10.zip](https://cdn.origene.com/chromatograms/mg4189_d10.zip)

**Restriction Sites:** SgfI-MluI

**Cloning Scheme:**

Cloning sites used for ORF Shuttling:



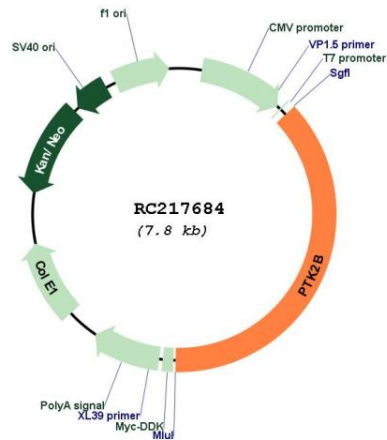
\* The last codon before the Stop codon of the ORF

**ACCN:** NM\_173175

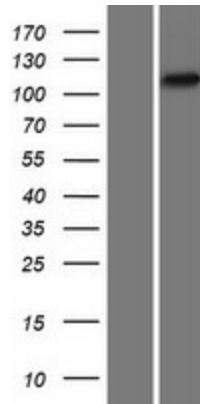
**ORF Size:** 2901 bp

<b>OTI Disclaimer:</b>	The molecular sequence of this clone aligns with the gene accession number as a point of reference only. However, individual transcript sequences of the same gene can differ through naturally occurring variations (e.g. polymorphisms), each with its own valid existence. This clone is substantially in agreement with the reference, but a complete review of all prevailing variants is recommended prior to use. <a href="#">More info</a>
<b>OTI Annotation:</b>	This clone was engineered to express the complete ORF with an expression tag. Expression varies depending on the nature of the gene.
<b>Components:</b>	The ORF clone is ion-exchange column purified and shipped in a 2D barcoded Matrix tube containing 10ug of transfection-ready, dried plasmid DNA (reconstitute with 100 ul of water).
<b>Reconstitution Method:</b>	<ol style="list-style-type: none"><li>1. Centrifuge at 5,000xg for 5min.</li><li>2. Carefully open the tube and add 100ul of sterile water to dissolve the DNA.</li><li>3. Close the tube and incubate for 10 minutes at room temperature.</li><li>4. Briefly vortex the tube and then do a quick spin (less than 5000xg) to concentrate the liquid at the bottom.</li><li>5. Store the suspended plasmid at -20°C. The DNA is stable for at least one year from date of shipping when stored at -20°C.</li></ol>
<b>RefSeq:</b>	<a href="#">NM_173175.2</a>
<b>RefSeq Size:</b>	3936 bp
<b>RefSeq ORF:</b>	2904 bp
<b>Locus ID:</b>	2185
<b>UniProt ID:</b>	<a href="#">Q14289</a>
<b>Cytogenetics:</b>	8p21.2
<b>Protein Families:</b>	Druggable Genome, Protein Kinase
<b>Protein Pathways:</b>	Calcium signaling pathway, Chemokine signaling pathway, GnRH signaling pathway, Leukocyte transendothelial migration, Natural killer cell mediated cytotoxicity
<b>MW:</b>	111 kDa
<b>Gene Summary:</b>	This gene encodes a cytoplasmic protein tyrosine kinase which is involved in calcium-induced regulation of ion channels and activation of the map kinase signaling pathway. The encoded protein may represent an important signaling intermediate between neuropeptide-activated receptors or neurotransmitters that increase calcium flux and the downstream signals that regulate neuronal activity. The encoded protein undergoes rapid tyrosine phosphorylation and activation in response to increases in the intracellular calcium concentration, nicotinic acetylcholine receptor activation, membrane depolarization, or protein kinase C activation. This protein has been shown to bind CRK-associated substrate, nephrocystin, GTPase regulator associated with FAK, and the SH2 domain of GRB2. The encoded protein is a member of the FAK subfamily of protein tyrosine kinases but lacks significant sequence similarity to kinases from other subfamilies. Four transcript variants encoding two different isoforms have been found for this gene. [provided by RefSeq, Jul 2008]

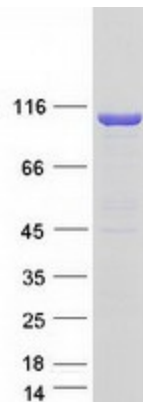
Product images:



Circular map for RC217684



Western blot validation of overexpression lysate (Cat# [LY406632]) using anti-DDK antibody (Cat# [TA50011-100]). Left: Cell lysates from untransfected HEK293T cells; Right: Cell lysates from HEK293T cells transfected with RC217684 using transfection reagent MegaTran 2.0 (Cat# [TT210002]).



Coomassie blue staining of purified PTK2B protein (Cat# [TP317684]). The protein was produced from HEK293T cells transfected with PTK2B cDNA clone (Cat# RC217684) using MegaTran 2.0 (Cat# [TT210002]).