

Product datasheet for **RC217580**

FOXP3 (NM_014009) Human Tagged ORF Clone

Product data:

Product Type:	Expression Plasmids
Product Name:	FOXP3 (NM_014009) Human Tagged ORF Clone
Tag:	Myc-DDK
Symbol:	FOXP3
Synonyms:	AIID; DIETER; IPEX; JM2; PIDX; XPID
Mammalian Cell Selection:	Neomycin
Vector:	pCMV6-Entry (PS100001)
E. coli Selection:	Kanamycin (25 ug/mL)



[View online »](#)

ORF Nucleotide Sequence:

>RC217580 representing NM_014009
 Red=Cloning site Blue=ORF Green=Tags(s)

TTTTGTAATACGACTCACTATAGGGCGGCCGGAATTCGTCGACTGGATCCGGTACCGAGGAGATCTGCC
 GCC**CGGATCGCC**

ATGCCAACCCAGGCCTGGCAAGCCCTCGGCCCTTCTTGGCCCTTGCCCATCCCCAGGAGCCTCGC
 CCAGCTGGAGGGCTGCACCCAAAGCCTCAGACCTGCTGGGGGCCGGGGCCAGGGGAACTTCCAGGG
 CCGAGATCTTCGAGGCGGGGCCATGCCTCCTTCTTCTTGAACCCCATGCCACCATCGCAGCTGCAG
 CTGCCACACTGCCCTAGTCATGGTGGCACCCCTCGGGGCACGGCTGGGCCCTTGCCCACTTACAGG
 CACTCCTCCAGGACAGGCCACATTTTCATGCACCAGCTCTCAACGGTGGATGCCACGCCCGGACCCCTGT
 GCTGCAGGTGCACCCCTGGAGAGCCAGCCATGATCAGCCTCACACCACCCACCACCGCCACTGGGGTC
 TTCTCCCTCAAGGCCGGCTGGCTCCACCTGGGATCAACGTGGCCAGCCTGGAATGGGTGTCCAGGG
 AGCCGGCACTGCTCTGCACCTTCCCAAATCCCAGTGCACCCAGGAAGGACAGCACCCCTTTCGGCTGTCC
 CCAGAGCTCTACCCACTGCTGGCAAATGGTGTCTGCAAGTGGCCGGATGTGAGAAGGTCTTCAAGAG
 CCAGAGGACTTCTCAAGCACTGCCAGGCGGACCATCTTCTGGATGAGAAGGGCAGGGCACAATGTCTCC
 TCAGAGAGAGATGGTACAGTCTCTGGAGCAGCAGCTGGTGTGGAGAAGGAGAAGCTGAGTGCCATGCA
 GGCCCACTGGCTGGGAAAATGGCACTGACCAAGGCTTCACTGTGGCATCATCCGACAAGGGCTCCTGC
 TGCATCGTAGCTGCTGGCAGCAAGGCCCTGTCGTCCCAGCCTGGTCTGGCCCCGGGAGGCCCTGACA
 GCCTGTTTGTGTCCGGAGGCACCTGTGGGGTAGCCATGGAAACAGCACATTCAGAGTTCTCCACAA
 CATGGACTACTTCAAGTCCACAACATGCGACCCCTTTCACCTACGCCACGCTCATCCGCTGGGCCATC
 CTGGAGGCTCCAGAGAAGCAGCGGACACTCAATGAGATCTACCACTGGTTCACACGCATGTTTGCCTTCT
 TCAGAAACCATCCTGCCACCTGGAAGAAGCCATCCGCCACAACCTGAGTCTGCACAAGTGTGTTGTGGC
 GGTGGAGAGCGAGAAGGGGGCTGTGTGGACCGTGGATGAGCTGGAGTTCGCAAGAAACGGAGCCAGAGG
 CCCAGCAGGTGTTCAACCTACACCTGGCCCC

ACGCGTACGCGGCCGCTCGAGCAGAAACTCATCTCAGAAGAGGATCTGGCAGCAAATGATATCCTGGATT
 ACAAGGATGACGACGATAAGGTTTAA

Protein Sequence:

>RC217580 representing NM_014009
 Red=Cloning site Green=Tags(s)

MPNPRPGKPSAPSLALGSPGASPSWRAAPKASDLLGARGPGGTFQGRDLRGGAHASSSSLNPMPPSQLQ
 LPTLPLVMVAPSGARLGPLPHLQALLQDRPHFMHQLSTVDAHARTPVLQVHPLESPAMISLTPPTTATGV
 FSLKARPLPPGINVASLEWVSREPALLCTFPNPSAPRKDSTLSAVPQSSYPLLANGVCKWPGCEKVFE
 PEDFLKHCQADHLLDEKGRAQCLLQREMVQSLEQQLVLEKEKLSAMQAHLAGKMALTKASSVASSDKGSC
 CIVAAGSQGPVPAWSPREAPDSLFAVRRHLWGSNGSTFPEFLHNMDFYKFNMRPPFTYATLIRWAI
 LEAPEKQRTLNEIYHWFTRMFAFRNHPATWKNAIRHNLSLHKCFVRVESEKGAWTVDELEFRKKRSQR
 PSRCSNPTPGP

TRTRPLEQKLISEEDLAANDILDYKDDDDKV

Chromatograms:

https://cdn.origene.com/chromatograms/mg2527_e05.zip

Restriction Sites:

Sgfl-Mlul

Cloning Scheme:

ACCN: NM_014009

ORF Size: 1293 bp

OTI Disclaimer: Due to the inherent nature of this plasmid, standard methods to replicate additional amounts of DNA in E. coli are highly likely to result in mutations and/or rearrangements. Therefore, OriGene does not guarantee the capability to replicate this plasmid DNA. Additional amounts of DNA can be purchased from OriGene with batch-specific, full-sequence verification at a reduced cost. Please contact our customer care team at custsupport@origene.com or by calling 301.340.3188 option 3 for pricing and delivery.

The molecular sequence of this clone aligns with the gene accession number as a point of reference only. However, individual transcript sequences of the same gene can differ through naturally occurring variations (e.g. polymorphisms), each with its own valid existence. This clone is substantially in agreement with the reference, but a complete review of all prevailing variants is recommended prior to use. [More info](#)

OTI Annotation: This clone was engineered to express the complete ORF with an expression tag. Expression varies depending on the nature of the gene.

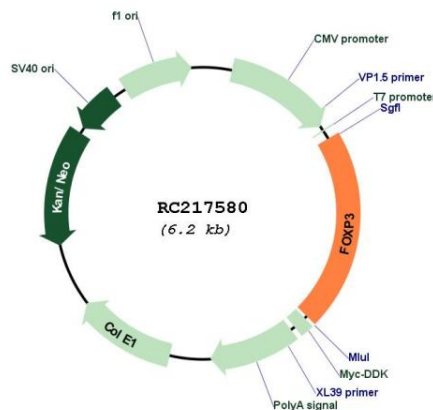
Components: The ORF clone is ion-exchange column purified and shipped in a 2D barcoded Matrix tube containing 10ug of transfection-ready, dried plasmid DNA (reconstitute with 100 ul of water).

- Reconstitution Method:**
1. Centrifuge at 5,000xg for 5min.
 2. Carefully open the tube and add 100ul of sterile water to dissolve the DNA.
 3. Close the tube and incubate for 10 minutes at room temperature.
 4. Briefly vortex the tube and then do a quick spin (less than 5000xg) to concentrate the liquid at the bottom.
 5. Store the suspended plasmid at -20°C. The DNA is stable for at least one year from date of shipping when stored at -20°C.

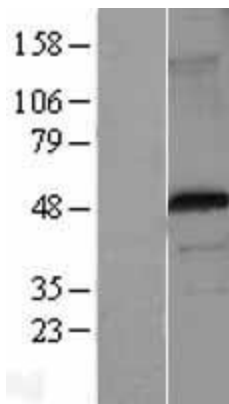
RefSeq: [NM_014009.4](#)

RefSeq Size: 1869 bp
RefSeq ORF: 1296 bp
Locus ID: 50943
UniProt ID: [Q9BZS1](#)
Cytogenetics: Xp11.23
Protein Families: Transcription Factors
MW: 47.1 kDa
Gene Summary: The protein encoded by this gene is a member of the forkhead/winged-helix family of transcriptional regulators. Defects in this gene are the cause of immunodeficiency polyendocrinopathy, enteropathy, X-linked syndrome (IPEX), also known as X-linked autoimmunity-immunodeficiency syndrome. Alternatively spliced transcript variants encoding different isoforms have been identified. [provided by RefSeq, Jul 2008]

Product images:



Circular map for RC217580



Western blot validation of overexpression lysate (Cat# [LY402270]) using anti-DDK antibody (Cat# [TA50011-100]). Left: Cell lysates from untransfected HEK293T cells; Right: Cell lysates from HEK293T cells transfected with RC217580 using transfection reagent MegaTran 2.0 (Cat# [TT210002]).