

## Product datasheet for RC217559

### Glutamyl Prolyl tRNA synthetase (EPRS) (NM\_004446) Human Tagged ORF Clone

#### Product data:

Product Type:	Expression Plasmids
Product Name:	Glutamyl Prolyl tRNA synthetase (EPRS) (NM_004446) Human Tagged ORF Clone
Tag:	Myc-DDK
Symbol:	Glutamyl Prolyl tRNA synthetase
Synonyms:	EARS; EPRS; GLUPRORS; HLD15; PARS; PIG32; QARS; QPRS
Mammalian Cell Selection:	Neomycin
Vector:	pCMV6-Entry (PS100001)
E. coli Selection:	Kanamycin (25 ug/mL)
ORF Nucleotide Sequence:	>RC217559 representing NM_004446 Red=Cloning site Blue=ORF Green=Tags(s)

TTTTGTAATACGACTCACTATAGGGCGGCCGGAATTCGTCGACTGGATCCGGTACCGAGGAGATCTGCC  
GCCCGGATCGCC

ATGGCGACGCTCTCTGACCGTGAATTCAGGAGACCCTCCGCTAGGAGCTTTGCTGGCAGTAGAACACG  
TGAAAGACGATGTCAGCATTTCCGTTGAAGAAGGGAAAGAGAATATTCTTCATGTTTCTGAAAATGTGAT  
ATTCACAGATGTGAATTTCTACTTCGCTACTTGGCTAGAGTTGCAACTACAGCTGGGTTATATGGCTCT  
AATCTGATGGAACATACTGAGATTGATCACTGGTTGGAGTTCAGTGTACAAAATATCTTCATGTGATT  
CCTTTACTTCTACAATTAATGAACTCAATCATTGCCTGTCTCTGAGAACATACTTAGTTGAAAACCTCTT  
GAGTTTAGCAGATTTATGTGTTGGGCCACCCTAAAAGGAAATGCTGCCTGGCAAGAACAGTTGAAACAG  
AAGAAAGCTCCAGTTCATGTAACGTTGGTTGGCTTTCTTGAAGCCAGCAGGCTTCCAGTCAGTAG  
GTACCAAGTGGGATGTTTCAACAACCAAGCTCGAGTGGCACCTGAGAAAAAGCAAGATGTTGGGAAATT  
TGTTGAGCTTCCAGGTGCGGAGATGGGAAAGGTTACCGTCAGATTTCTCCAGAGGCCAGTGGTTACTTA  
CACATTGGGCATGCAAAAGCTGCTTCTGAAACCAGCACTACCAGGTTAACTTTAAAGGGAAACTGATCA  
TGAGATTTGATGACACAAATCCTGAAAAAGAAAGGAAGATTTGAGAAGGTTATCTTGGAAAGATGTTGC  
AATGTTGCATATCAAACAGATCAATTTACTTATACTTCGGATCATTTTAAAACATAATGAAGTATGCA  
GAGAAGCTAATTCAAGAAGGGAAGGCTTATGTGGATGATACTCCTGCTGAACAGATGAAAGCAGAACGTCG  
AGCAGAGGATAGACTCTAAACATAGAAAAACCCTATTGAGAAGAATCTACAAATGTGGGAAGAAATGAA  
AAAAGGGAGCCAGTTTGGTCAGTCTGTTGTTTGGCAGCAAAAATTGACATGAGTAGTAACAATGGATGC  
ATGAGAGATCCAACCTTTATCGCTGCAAAATCAACCACATCCAAGAACTGAAAATAAATAACAATGTTT  
ATCCAACATATGATTTTGCCTGCCCATAGTTGACAGCATCGAAGGTGTTACACATGCCCTGAGAACAAC  
AGAATACCATGACAGAGATGAGCAGTTTACTGGATTATTGAAGCTTTAGGCATAAGAAAACCATATATT  
TGGGAATATAGTCGGCTAAATCTCAACAACACAGTGTATCCAAAAGAAAACCTACATGGTTTGTCAATG  
AAGGACTAGTAGATGGATGGGATGACCCAAGATTTCTACGGTTCGTGGTGTACTGAGAAGAGGGATGAC  
AGTTGAAGGACTGAAACAGTTTATTGCTGCTCAGGGCTCCTCACGTTTCAGTCGTGAACATGGAGTGGAC



[View online »](#)

AAAATCTGGGCGTTTAAACAAAAAGGTTATTGACCCAGTGGCTCCACGATATGTTGCATTACTGAAGAAAG  
AAGTGATCCCAGTGAATGTACCTGAAGCTCAGGAGGAGATGAAAGAAGTAGCCAAACACCCAAAGAATCC  
TGAGGTTGGCTTGAAGCCTGTGTGGTATAGTCCCAAAGTTTTTCATTGAAGGTGCTGATGCAGAGACTTTT  
TCGGAGGGTGAGATGGTTACATTTATAAATTGGGGCAACCTCAACATTACAAAAATACACAAAAATGCAG  
ATGAAAAATCATATCTTTGATGCAAAGTTGAATTTGGAAAAACAAGACTACAAGAAAACCACTAAGGT  
CACTTGGCTTGCAGAGACTACACATGCTCTTCTATTCCAGTAATCTGTGTCACCTATGAGCACTTGATC  
ACAAAGCCAGTGTAGGAAAAGACGAGGACTTTAAGCAGTATGTCAACAAGAACAGTAAGCATGAAGAGC  
TAATGCTAGGGGATCCCTGCCTTAAGGATTTGAAAAAGGAGATATTATACAACCTCAGAGAAGAGGATT  
CTTCATATGTGATCAACCTTATGAACCTGTTAGCCCATATAGTTGCAAGGAAGCCCGTGTGTTTTGATA  
TACATTCTGATGGGCACACAAAGGAAATGCCAACATCAGGGTCAAAGGAAAAGACCAAAGTAGAAGCCA  
CAAAAAATGAGACCTCTGCTCTTTAAGGAAAGACCAACACCTTCTCTGAATAATAATTGTACTACATC  
TGAGGATTCCTTGGTCTTTACAATAGAGTGGCTGTTCAAGGAGATGTGGTTCGTGAATAAAAGCCAAG  
AAAGCACAAAGGAAGATGTAGATGCAGCTGTAAACAGCTTTTGTCTTTGAAAGCTGAATATAAGGAGA  
AAACTGGCCAGGAATATAAACCCTGGAAACCCTCCTGCTGAAATAGGACAGAATATTTCTTCTAATCCCTC  
AGCAAGTATTCTGGAAAGTAAATCTCTGTATGATGAAGTTGCTGCACAAGGGGAGGTGGTTCGTAAGCTA  
AAAGCTGAAAAATCCCTAAGGCTAAAAATAAGCTGTAGAATGCTTACTGTCCCTGAAGGCTCAGT  
ATAAAGAAAAAACTGGGAAGGAGTACATACCTGGTCAGCCCCATTATCTCAAAGTTCGGATTCAAGCCC  
AACCAGAAATCTGAACCTGCTGGTTTAGAAAACCCAGAAAGCAGAAAGTACTTTTTGACAAAGTAGCTTCT  
CAAGGGGAAGTAGTTCGGAAACTTAAACTGAAAAAGCCCTAAGGATCAAGTAGATATAGCTGTCAAG  
AACTCCTTCAGCTAAAGGCACAGTACAAGTCTTTGATAGGAGTAGAGTATAAGCCTGTGTCGGCCACTGG  
AGCTGAGGACAAAGATAAGAAGAAGAAAGAAAAAGAAAAATAAATCTGAAAAGCAGAATAAGCCTCAGAAA  
CAAAATGATGGCCAAAGGAAAGACCCTTCTAAAAACCAAGGAGGTGGGCTCTCATCAAGTGGAGCAGGAG  
AAGGGCAGGGCCCTAAGAAACAGACCAGTGGGCTTTGAGGCAAAAAAGAAAGAAAAATCTGCTGATTG  
GTATTCTCAGGTATCACAAAGTCAGAAATGATTGAATACCATGACATAAGTGGCTGTTATATTCTTCGT  
CCCTGGGCTATGCCATTTGGGAAGCCATCAAGGACTTTTTTGTGCTGAGATCAAGAACTTGGTGTG  
AAAAGTACTACTCCCATGTTTGTGTCTCAAAGTGCATTAGAGAAAGAGAAGACTCATGTTGTGACTT  
TGCCCCAGAGGTTGCTTGGGTTACAAGATCTGGCAAAACCGAGCTGGCAGAACCAATTGCCATTCGTCT  
ACTAGTAAACAGTAATGTATCCTGCATATGCAAAATGGGTACAGTACACAGAGACCTGCCATCAAGC  
TCAATCAGTGGTCAATGTGGTGCCTGGGAATCAAGCATCCTCAGCCTTCTACGACTCGTGAATT  
TCTTTGGCAGGAAGGCACAGTCTTTTGTACCATGGAAGAGGCAGCGGAAGAGGTCTGCAGATACTT  
GACTTATATGCTCAGGTATATGAAGAACTCCTGGCAATCCTGTTGTTAAAGGAAGAAAGACGGAAAAGG  
AAAAATTTGCAGGAGGAGACTATACAACATAAATAGAAGCATTATATCTGCTAGTGAAGAGCTATCCA  
GGGAGGAACATCACATCATTTAGGGCAGAAATTTTCCAAAATGTTTGAATCGTTTTTGAAGATCCAAAG  
ATACCAGGAGAGAAGCAATTTGCCTATCAAACTCCTGGGGCCTGACAACTCGAACTATTGGTGTATGA  
CCATGGTTCATGGGGACAACATGGGTTTGTATTACCACCCCGTGTAGCATGTGTTTCAGGTGGTATTAT  
TCCTTGTGGCATTACCAATGCATTTCTGAAGAAGACAAAGAAGCGCTGATTGCAAAATGCAATGATTAT  
CGAAGGCGATTACTCAGTGTTAACATCCGCGTTAGAGCTGATTTACGAGATAATTATTCTCCAGGTGGA  
AATTCATCACTGGGAGCTCAAGGGAGTCCCATTAGACTTGAAGTTGGGCCACGTGATATGAAGAGCTG  
TCAGTTTGTAGCCGTGAGACGAGATACTGGAGAAAAGCTGACAGTTGCTGAAAATGAGGCAGAGACTAAA  
CTTCAAGCTATTTTGAAGACATCCAGGTACCCTTTTACAAGGGCTTCTGAAGACCTTAAAGACTCATA  
TGTTGTGGCTAATAACAATGGAAGACTTTCAGAAGATACTAGATTCTGGAAGATTGTTTCAGATTCCATT  
CTGTGGGAAATGACTGTGAGGACTGGATCAAAAAGACCACTGCCAGGGATCAAGATCTTGAACCTGGT  
GCTCCATCCATGGGAGCTAAAAGCCTTTGCATCCCTTCAAACCACTCTGTGAAGTGCAGCCTGGAGCCA  
AATGTGCTGTGGCAAGAACCCTGCCAAGTACTACACCTATTTGGTCCGAGCTAC

ACGCGTACGCGGCCGCTCGAGCAGAAACTCATCTCAGAAGAGGATCTGGCAGCAATGATATCCTGGATT  
ACAAGGATGACGACGATAAGGTTTAA

Protein Sequence: >RC217559 representing NM\_004446  
 Red=Cloning site Green=Tags(s)

MATLSLTVNSGDPPLGALLAVEHVKDDVSI SVEEGKENILHVSENVIFTDVNSILRYLARVATTAGLYGS  
 NLMHETEIDHWLEFSATKLS SCSDFSTSTINELNHCLSLRITYLVGNLSLADLCVWATLKGNAAWQEQLKQ  
 KKAPVHVYKRWFGFLEAQQAFQSVGTKWDVSTTKARVAPEKKQDVGKVELPGAEMGKVTYRFPPEASGYL  
 HIGHAKAALLNQHYQVNFKGLIMRFD DTPAEQMKAREQRIDSKHRKNPIEKNLQMWEEKMGSGQFQSCCLRAKIDMSSNNGC  
 EKLIQEGKAYVDDTPAEQMKAREQRIDSKHRKNPIEKNLQMWEEKMGSGQFQSCCLRAKIDMSSNNGC  
 MRDPTLYRCKIQPHPRGNKYNVYPTYDFACPIVDSIEGVTHALRTTEYHDRDEQFYWIEALGIRKPYI  
 WEYSRLNLNNTVLSKRKLTWVNEGLVDGWDDPRFPTVRGVLRRGMTVEGLKQFIAAQGSSRSVVMMEWD  
 KIWAFNKKVIDPVAPRYVALLKKEVIPVNVPEAQEEMKEVAKHPKNPEVGLKPVWYSPKVFIEGADAETF  
 SEGEMVTFINWGNLNITKIHKNADGKIIISLDAKLNLENKDYKTKTKVTLAETHALPIPVICVYEHLI  
 TKPVLGKDEDFKQYVKNKSKHEELMLGDPCLKDLKKGDI IQLQRRGFFICDQPYEPVSPYSCKEAPCVLI  
 YIPDGHTKEMPTSGSKEKTKVEATKNETSAPFKERPTPSLNNNCTTSEDSLVL YNRVAVQGDVVRELKAK  
 KAPKEDVDAAVKQLLSLKA EYKEKTGQ EYKPGNPPAEIGQNISSNSASILESKSLYDEVA AQGEVVRKL  
 KAEKSPKAKINEAVECLLSLKAQYKEKTGKEYIPGQPPLSQSSDSSPTRNSEPAGLETPEAKVLFDKVAS  
 QGEVVRKLKTEKAPKDQVDIAVQELLQLKAQYKSLIGVEYKPVSA TGAEDKDKKKKKEKENKSEKQNKPKQ  
 QNDGQRKDP SKNQGGGLSSSGAGEGQGPKKQTRLGLEAKKEENLADWYSQVITKSEMI EYHDISGCYILR  
 PWAYAIWEAIKDFDAEIKKLG VENCYPFMFVSQSALEKEKTHVADF APEVAVWVTRSGKTELAEP I AIRP  
 TSETVMYPAYAKWVQSHRDLPIKLNQWCNVVRWEFKHPQPF LRTREFLWQEGHS AFATMEEAAEEVLQIL  
 DLYAQVYEELLAIPVVKGRKTEKEKFA GGDYTTTIEAFISASGRAIQGGTSHHLGQNF SKMFEIVFEDPK  
 IPGEKQFAYQNSWGLTTRTIGVMTMVHGDNMGLVLP RVACVQVVIIPCGITNALSEEDKEALIAKCNDY  
 RRRLSVNIRVRADLRDNYSPGWKFNHWELKGVPIRLEVGP RDMKSCQFVAVRRDTGEKLTVAENAEATK  
 LQAILEDIQVTLFTRASEDLKTHMVVANTMEDFQKILDSGKIVQIPFCGEIDCEDWIKKTTARDQDLEPG  
 APSMGAKSLCIPFKPLCELQPGAKCVC GKNPAKYTYLFGRSY

TRTRPLEQKLISEEDLAANDILDYKDDDDKV

Chromatograms: [https://cdn.origene.com/chromatograms/mk6263\\_b09.zip](https://cdn.origene.com/chromatograms/mk6263_b09.zip)

Restriction Sites: SgfI-MluI

Cloning Scheme:



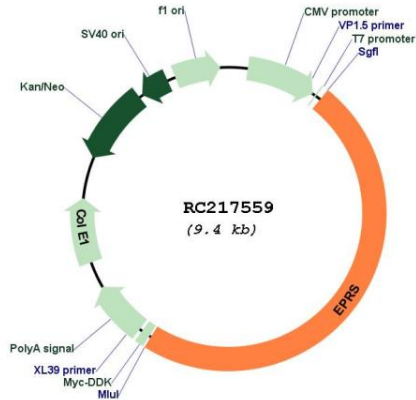
ACCN: NM\_004446

<b>ORF Size:</b>	4536 bp
<b>OTI Disclaimer:</b>	<p>Due to the inherent nature of this plasmid, standard methods to replicate additional amounts of DNA in E. coli are highly likely to result in mutations and/or rearrangements. Therefore, OriGene does not guarantee the capability to replicate this plasmid DNA. Additional amounts of DNA can be purchased from OriGene with batch-specific, full-sequence verification at a reduced cost. Please contact our customer care team at <a href="mailto:custsupport@origene.com">custsupport@origene.com</a> or by calling 301.340.3188 option 3 for pricing and delivery.</p> <p>The molecular sequence of this clone aligns with the gene accession number as a point of reference only. However, individual transcript sequences of the same gene can differ through naturally occurring variations (e.g. polymorphisms), each with its own valid existence. This clone is substantially in agreement with the reference, but a complete review of all prevailing variants is recommended prior to use. <a href="#">More info</a></p>
<b>OTI Annotation:</b>	This clone was engineered to express the complete ORF with an expression tag. Expression varies depending on the nature of the gene.
<b>Components:</b>	The ORF clone is ion-exchange column purified and shipped in a 2D barcoded Matrix tube containing 10ug of transfection-ready, dried plasmid DNA (reconstitute with 100 ul of water).
<b>Reconstitution Method:</b>	<ol style="list-style-type: none"><li>1. Centrifuge at 5,000xg for 5min.</li><li>2. Carefully open the tube and add 100ul of sterile water to dissolve the DNA.</li><li>3. Close the tube and incubate for 10 minutes at room temperature.</li><li>4. Briefly vortex the tube and then do a quick spin (less than 5000xg) to concentrate the liquid at the bottom.</li><li>5. Store the suspended plasmid at -20°C. The DNA is stable for at least one year from date of shipping when stored at -20°C.</li></ol>
<b>RefSeq:</b>	<a href="#">NM_004446.3</a>
<b>RefSeq Size:</b>	5021 bp
<b>RefSeq ORF:</b>	4539 bp
<b>Locus ID:</b>	2058
<b>UniProt ID:</b>	<a href="#">P07814</a>
<b>Cytogenetics:</b>	1q41
<b>Domains:</b>	WHEP-TRS, tRNA-synt_1c, tRNA-synt_2b, HGTP_anticodon
<b>Protein Families:</b>	Druggable Genome
<b>Protein Pathways:</b>	Aminoacyl-tRNA biosynthesis, Metabolic pathways, Porphyrin and chlorophyll metabolism
<b>MW:</b>	170.4 kDa

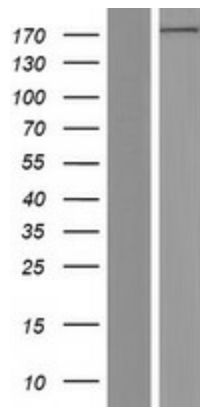
**Gene Summary:**

Aminoacyl-tRNA synthetases are a class of enzymes that charge tRNAs with their cognate amino acids. The protein encoded by this gene is a multifunctional aminoacyl-tRNA synthetase that catalyzes the aminoacylation of glutamic acid and proline tRNA species. Alternative splicing has been observed for this gene, but the full-length nature and biological validity of the variant have not been determined. [provided by RefSeq, Jul 2008]

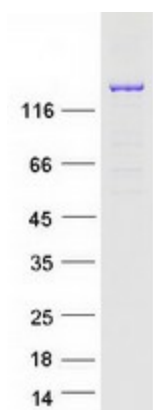
**Product images:**



Circular map for RC217559



Western blot validation of overexpression lysate (Cat# [LY417983]) using anti-DDK antibody (Cat# [TA50011-100]). Left: Cell lysates from untransfected HEK293T cells; Right: Cell lysates from HEK293T cells transfected with RC217559 using transfection reagent MegaTran 2.0 (Cat# [TT210002]).



Coomassie blue staining of purified EPRS protein (Cat# [TP317559]). The protein was produced from HEK293T cells transfected with EPRS cDNA clone (Cat# RC217559) using MegaTran 2.0 (Cat# [TT210002]).