

## Product datasheet for **RC217414**

### **ARHGAP25 (NM\_014882) Human Tagged ORF Clone**

#### **Product data:**

|                           |   |
|---------------------------|---|
| Product Type:             | Expression Plasmids                         |
| Product Name:             | ARHGAP25 (NM_014882) Human Tagged ORF Clone |
| Tag:                      | Myc-DDK                                     |
| Symbol:                   | ARHGAP25                                    |
| Synonyms:                 | HEL-S-308; KAIA0053                         |
| Mammalian Cell Selection: | Neomycin                                    |
| Vector:                   | pCMV6-Entry (PS100001)                      |
| E. coli Selection:        | Kanamycin (25 ug/mL)                        |



[View online »](#)

ORF Nucleotide  
Sequence:

>RC217414 representing NM\_014882  
Red=Cloning site Blue=ORF Green=Tags(s)

TTTTGTAATACGACTCACTATAGGGCGGCCGGAATTCGTCGACTGGATCCGGTACCGAGGAGATCTGCC  
GCC**CGGATCGCC**

ATGTCCCTCGGTCACTCGGCCTGTCTGTCTCTATAGCTCGGTCAAGGAGTGTGATGACTGGCGAGC  
AGATGGCTGCCTCCATCCATCGTCCACCCCAACCCGCTGGAGAGGCCATCAAGATGGGCTGGCTGAA  
GAAGCAGAGGTCCATCGTGAAGAACTGGCAGCAGAGTACTTTGTGCTGAGGGCGCAGCAGCTCTACTAC  
TACAAGGATGAAGAGGACACGAAGCCCCAGGGCTGCATGTATCTACCAGGATGTACAATCAAGGAGATCG  
CCACAAACCCAGAAGAAGCTGGGAAGTTTGTCTTTGAAATCATTCCAGCCTCATGGGACCAGAATCGCAT  
GGGACAGGACTCCTATGTCTCATGGCCAGCTCTCAGGCGGAGATGGAGGAGTGGTTAAATTCCTCAGG  
AGAGTTGTGGCACACCCTGTGGAGCAGTGTGGCCAGCGCTTGGATGAGACTGTGGCCTATGAACAGA  
AATTCGGCCCCCATCTGGTGGCCATCCTGGTGGAGAAATGTGCAGAGTTCATCCTGGAGCACGGCCGGAA  
TGAAGAGGGCATCTTCCGTCTGCCTGGGACAGCAACCTGGTGAAGCAGCTGAGAGACGCTTTTGATGCT  
GGGAGCGGCCCTCCTTTGACAGAGACACAGATGTGCACACTGTGGCTTCCCTGTAAAGCTCTACCTCC  
GAGACCTCCCAGAGCCCCTGGTCCCTGGAGCCAGTACGAAGGGTTCCTGCTCTGTGGGCAGCTCACGAA  
TGCGGATGAGGCAAAGGCTCAGCAGGAGTTGATGAAGCAGCTCTCCATCCTTCTCGTGACAACATAAGT  
CTCCTGAGCTACATCTGCAGGTTCTACATGAAATACAGCTGAAGTGTGCTGTTAACAAGATGAGTGTGG  
ACAACCTGGTACTGTGATTGGTGTGAATCTCATCAGGTCGAAGGTGAAGACCCCTGCCGTGATCATGAG  
AGGGACTCCTCAGATCCAAGAGTGTGACTATGATGATCAGAGACCATGAAGTCTCTTCCCAAGTCC  
AAGGATATACCCTGTCACCCCTGCCAGAAAAATGACCCCAAGAAAGTCCAGTGGCCCGAAGCTCTG  
TAGGCTGGGATGCCACTGAAGACCTCCGAATTTCTAGGACAGACAGCTTCCAGTGCATGACAAGCGACTC  
TGATACAACAGCCCCACCGGACAGCAGCCGAGCGATGCGTTTCCGGAGGACAGCAGCAAAGTACCCAGG  
GAAAAGCCAGGAGACTGGAAAATGCAATCTCGTAAAAGGACTCAAACACTCCCTAACCGGAAATGTTTCT  
TGACATCAGCTTTTCAGGGTGCCAACAGCAGCAAAATGGAGATCTTAAAAATGAATTCGGTCGCCTTC  
CTCAGAGGCTAAGGCAGGGGAAGGGCACAGGAGAACGATGTCTCAAGACTTGGCCAACTTTCTGACTCC  
CAACGGACTTCCACCTACGATAACGTCCCTTCCCTGCCAGGGTCCCCTGGGGAGGAAGCCAGTGCCTCT  
CTTCCCAAGCCTGTGACTCCAAGGGAGATACTCTTCCAGTCCAACTCTGAACTGGGCCTGGAAAAAA  
GAACTCTGGAGAAGAGGAAATGATTCTTTGCAGAGGACGGTCCAAGAGCTACGAAAGGAAATAGAAACA  
CAGAAGCAAATGTATGAGGAACAGATTAACAACTTGAAGGAAATATGACGTTTGGGCTAAAGTGG  
TGAGGCTCAATGAAGAACTGGAGAAGGAAAAGAAGTCTGCAGCCCTAGAGATCAGCCTCCGCAACAT  
GGAGCGCTCCCGGAGGATGTTGAGAAGAGGAACAAGGCCTTGAAGAAGAAGTCAAGGAATTTGTCAAA  
TCCATGAAGGAACCAAGACCGAGGCT

**ACGCGT**ACGCGGCCGCTCGAGCAGAACTCATCTCAGAAGAGGATCTGGCAGCAAATGATATCCTGGATT  
ACAAGGATGACGACGATAAGGTTTAA

**Protein Sequence:** >RC217414 representing NM\_014882  
Red=Cloning site Green=Tags(s)

MSLGQSACLFLSIARSRVMTGEQMAAFHPSSTPNPLERPIKMGWLKKQRSIVKNWQQRVFLRAQQLYY  
 YKDEEDTKPQGCMYLPGCTIKEIATNPPEAGKFVFEIIPASWDQNRMGQDSYVLMASSQAEMEEWVKFLR  
 RVAGTPCGAVFGQRLDETVAYEQKFGPHLVPILVEKCAEFIEHGRNEEGIFRLPGQDNLVKQLRDAFDA  
 GERPSFDRDSTDVHTVASLLKLYLRDLPEPVPWSQYEGFLLCGQLTNADEAKAQQLMKQLSILPRDNYS  
 LLSYICRFLHEIQLNCAVNKMSVDNLATVIGVNLIRSKVEDPAVIMRGTPQIQRVMTMMIRDHEVLFPKS  
 KDIPLSPPAQKNDPKAPVARSSVGDATEDLRI SRTDSFSSMTSDSDTT SPTGQQPSDAFPEDSSKVP  
 EKPGDWKMSRKRTQTLNPKCFLTSAFQGANSSKMEIFKNEFWSPSEAKAGEGHRRTMSQDLRQLSDS  
 QRTSTYDNVPSLPGSPGEEASALSSQACDSKGD LASPNS ETGPGKNSGEE EIDSLQRTVQELRKEIET  
 QKQMYEEQIKNLEKENYDVWAKVRLNEELEKEKKKSAALEISLRNMERSREDVEKRNKALEEEVKEFKV  
 SMKEPKTEA

TRTRPLEQKLISEEDLAANDILDYKDDDDKV

**Chromatograms:** [https://cdn.origene.com/chromatograms/mk6044\\_a01.zip](https://cdn.origene.com/chromatograms/mk6044_a01.zip)

**Restriction Sites:** SgfI-MluI

**Cloning Scheme:**



**ACCN:** NM\_014882

**ORF Size:** 1917 bp

**OTI Disclaimer:** The molecular sequence of this clone aligns with the gene accession number as a point of reference only. However, individual transcript sequences of the same gene can differ through naturally occurring variations (e.g. polymorphisms), each with its own valid existence. This clone is substantially in agreement with the reference, but a complete review of all prevailing variants is recommended prior to use. [More info](#)

**OTI Annotation:** This clone was engineered to express the complete ORF with an expression tag. Expression varies depending on the nature of the gene.

**Components:** The ORF clone is ion-exchange column purified and shipped in a 2D barcoded Matrix tube containing 10ug of transfection-ready, dried plasmid DNA (reconstitute with 100 ul of water).

**Reconstitution Method:**

1. Centrifuge at 5,000xg for 5min.
2. Carefully open the tube and add 100ul of sterile water to dissolve the DNA.
3. Close the tube and incubate for 10 minutes at room temperature.
4. Briefly vortex the tube and then do a quick spin (less than 5000xg) to concentrate the liquid at the bottom.
5. Store the suspended plasmid at -20°C. The DNA is stable for at least one year from date of shipping when stored at -20°C.

**RefSeq:** [NM\\_014882.3](#)

**RefSeq Size:** 2957 bp

**RefSeq ORF:** 1917 bp

**Locus ID:** 9938

**UniProt ID:** [P42331](#)

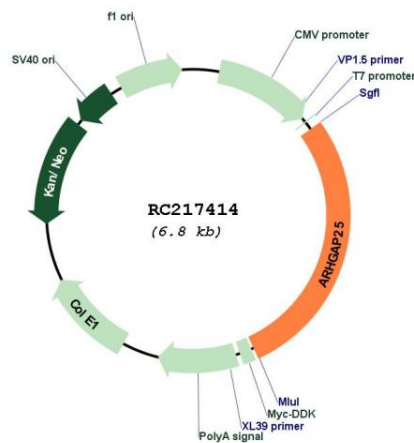
**Cytogenetics:** 2p13.3

**Domains:** RhoGAP, PH

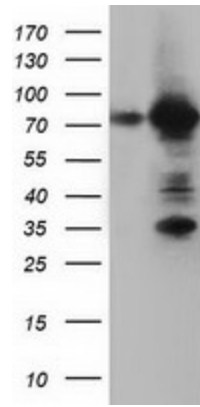
**MW:** 72.3 kDa

**Gene Summary:** ARHGAPs, such as ARHGAP25, encode negative regulators of Rho GTPases (see ARHA; MIM 165390), which are implicated in actin remodeling, cell polarity, and cell migration (Katoh and Katoh, 2004 [PubMed 15254788]).[supplied by OMIM, Mar 2008]

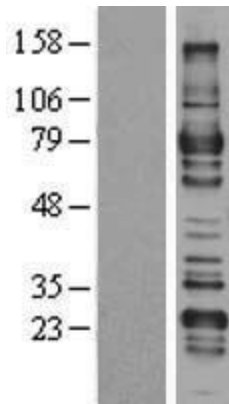
### Product images:



Circular map for RC217414



HEK293T cells were transfected with the pCMV6-ENTRY control (Cat# [PS100001], Left lane) or pCMV6-ENTRY ARHGAP25 (Cat# RC217414, Right lane) cDNA for 48 hrs and lysed. Equivalent amounts of cell lysates (5 ug per lane) were separated by SDS-PAGE and immunoblotted with anti-ARHGAP25(Cat# [TA501745]). Positive lysates [LY402385] (100ug) and [LC402385] (20ug) can be purchased separately from OriGene.



Western blot validation of overexpression lysate (Cat# [LY402385]) using anti-DDK antibody (Cat# [TA50011-100]). Left: Cell lysates from untransfected HEK293T cells; Right: Cell lysates from HEK293T cells transfected with RC217414 using transfection reagent MegaTran 2.0 (Cat# [TT210002]).



Coomassie blue staining of purified ARHGAP25 protein (Cat# [TP317414]). The protein was produced from HEK293T cells transfected with ARHGAP25 cDNA clone (Cat# RC217414) using MegaTran 2.0 (Cat# [TT210002]).