

## Product datasheet for **RC217403**

### Salivary alpha amylase (AMY1A) (NM\_004038) Human Tagged ORF Clone

#### Product data:

|                           |   |
|---------------------------|---|
| Product Type:             | Expression Plasmids   |
| Product Name:             | Salivary alpha amylase (AMY1A) (NM_004038) Human Tagged ORF Clone |
| Tag:                      | Myc-DDK   |
| Symbol:                   | Salivary alpha amylase  |
| Synonyms:                 | AMY1  |
| Mammalian Cell Selection: | Neomycin  |
| Vector:                   | pCMV6-Entry (PS100001)  |
| E. coli Selection:        | Kanamycin (25 ug/mL)  |



[View online »](#)

**ORF Nucleotide Sequence:**

>RC217403 representing NM\_004038  
 Red=Cloning site Blue=ORF Green=Tags(s)

TTTTGTAATACGACTCACTATAGGGCGGCCGGAATTCGTCGACTGGATCCGGTACCGAGGAGATCTGCC  
 GCC**CGCATCGCC**

ATGAAGCTCTTTTGGTTGCTTTTACCATTGGGTTCTGCTGGGCTCAGTATTCCTCAAATACACAACAAG  
 GACGAACATCTATTGTTTCATCTGTTGAATGGCGATGGGTTGATATTGCTTGAATGTGAGCGATATTT  
 AGCTCCCAAGGGATTTGGAGGGTTTCAGGTCTCTCCACCAAATGAAAATGTTGCCATTCACAACCCTTTC  
 AGACCTTGGTGGGAAAGATACCAACCAGTTAGCTATAAATTATGCACAAGATCTGGAAATGAAGATGAAT  
 TTAGAACATGGTACTAGTGAACAATGTTGGGTTCTGATTTATGTGGATGCTGTAATTAATCATAT  
 GTGTGGTAATGCTGTGAGTGCAGGAACAAGCAGTACCTGTGGAAGTACTTCAACCCTGGAAGTAGGGAC  
 TTTCCAGCAGTCCCATATTTCTGGATGGGATTTAATGATGGTAAATGTAAAAGTGAAGTGGAGATATCG  
 AGAACTATAATGATGCTACTCAGGTGAGAGATTGCTGCTGTCTGGTCTTCTCGATCTTGCAGTGGGAA  
 GGATTATGTGCGTTCTAAGATTGCCGAATATATGAACCATCTCATTGACATTGGTGTTCAGGGTTCAGA  
 ATTGATGCTTCCAAGCAGATGTGGCCTGGAGACATAAAGGCAATTTTGGACAACTGCATAATCTAAACA  
 GTAACCTGGTCCCGAAGGTAGTAAACCTTTCATTTACCAGGAGGTAATTGATCTGGGTGGTGGACCAAT  
 TAAAAGCAGTACTACTTTGGTAAATGGCCGGGTGACAGAAATCAAGTATGGTGCAAACTCGGCACAGTT  
 ATTCGCAAGTGGAAATGGAGAGAAGATGTCTTACTTAAAGAAGTGGGAGAAAGGTTGGGTTTTCATGCCTT  
 CTGACAGAGCGCTTGTCTTTGTGGATAACCATGACAATCAACGAGGACATGGCGCTGGAGGAGCCTCTAT  
 ACTTACCTTCTGGGATGCTAGGCTGTACAAAATGGCAGTTGGATTTATGCTTGTCTCATCCTTATGGATT  
 ACACGAGTAATGTCAAGTACCCTGGCCAAGATATTTGAAAATGAAAAGATGTAATGATTGGGTTG  
 GGCCACCAAATGATAATGGAGTAACTAAAGAAGTACTATTAATCCAGACACTACTTGTGGCAATGACTG  
 GGTCTGTGAACATCGATGGCGCCAAATAAGGAACATGGTTAATTTCCGCAATGTAGTGGATGGCCAGCCT  
 TTTACAACTGGTATGATAATGGGAGCAACCAAGTGGCTTTTGGGAGAGGAAACAGAGGATTCATTGTTT  
 TCAACAATGATGACTGGACATTTTCTTTAACTTTGCAAAGTGGTCTTCTGCTGGCACATACTGTGATGT  
 CATTCTGGAGATAAAATTAATGGCAACTGCACAGGCATTAATAATCTACGTTTCTGATGATGGCAAAGCT  
 CATTCTTCTATTAGTAAGTCTGCTGAAGATCCATTTATTGCAATTCATGCTGAATCTAAATTG

**ACGCGT**ACGCGGCCGCTCGAGCAGAACTCATCTCAGAAGAGGATCTGGCAGCAAATGATATCCTGGATT  
 ACAAGGATGACGACGATAAGGTTTAA

**Protein Sequence:**

>RC217403 representing NM\_004038  
 Red=Cloning site Green=Tags(s)

MKLFWLLFTIGFCWAQYSSNTQQGRTSIVHLFEWRWVDIALECERYLAPKGGVQVSPNENVAIHNP  
 RPWWERYQPVSYKLCRSGNEDEFNMVTRCANNVGVRIYVDAVINHMCNAVSAGTSSTCGSYFNPGRD  
 FPAVPYSGWDFNDGKCKTGSGDIENYNDATQVRDRLSGLLDLALGKDYVRSKIAEYMNHLIDIGVAGFR  
 IDASKHMWPGDIKAILDKLHNLNSNWFPEGSKPFYQEVIDLGGPEIKSSDYFGNGRVTEFKYGA  
 LKLVIRKWNGEKMSYLNWEGWGFMPDRALVFDNHDNRGHGAGGASILTFWDARLYKMAVGFMLAHPYGF  
 TRVMSSYRWPYFENGKDVNDWVPPNDNGVTKEVTINPDTCGNDWVCEHRWRQIRNMVFRNVVDGQP  
 FTNWDYDNGSNQVAFGRGNRGIIVFNDDWTFSLTLQGLPAGTYCDVISGDKINGNCTGIKIYVSDGKA  
 HFSISNSAEDPFIATHAESKL

**TRTRPLEQKLI**SEEDLAANDILDYKDDDDKV

**Restriction Sites:**

Sgfl-Mlul



**Domains:** alpha-amylase, Aamy\_C, Aamy

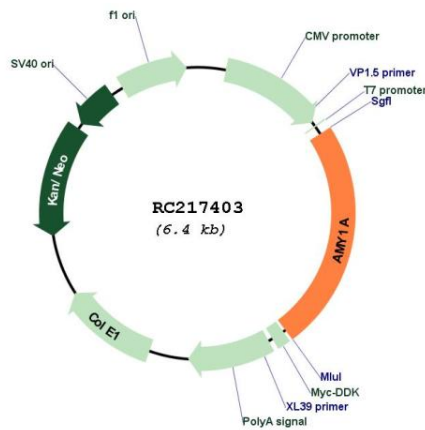
**Protein Families:** ES Cell Differentiation/IPS, Secreted Protein

**Protein Pathways:** Metabolic pathways, Starch and sucrose metabolism

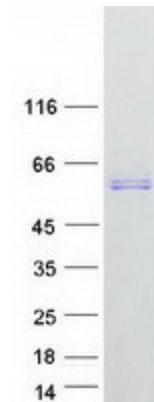
**MW:** 57.8 kDa

**Gene Summary:** Amylases are secreted proteins that hydrolyze 1,4-alpha-glucoside bonds in oligosaccharides and polysaccharides, and thus catalyze the first step in digestion of dietary starch and glycogen. The human genome has a cluster of several amylase genes that are expressed at high levels in either salivary gland or pancreas. This gene encodes an amylase isoenzyme produced by the salivary gland. Alternative splicing results in multiple transcript variants encoding the same protein. [provided by RefSeq, Jul 2008]

**Product images:**



Circular map for RC217403



Coomassie blue staining of purified AMY1A protein (Cat# [TP317403]). The protein was produced from HEK293T cells transfected with AMY1A cDNA clone (Cat# RC217403) using MegaTran 2.0 (Cat# [TT210002]).