

Product datasheet for RC217237

G CSF (CSF3) (NM_000759) Human Tagged ORF Clone

Product data:

Product Type: Expression Plasmids
Product Name: G CSF (CSF3) (NM_000759) Human Tagged ORF Clone
Tag: Myc-DDK
Symbol: G CSF
Synonyms: C17orf33; CSF3OS; GCSF
Mammalian Cell Selection: Neomycin
Vector: pCMV6-Entry (PS100001)
E. coli Selection: Kanamycin (25 ug/mL)
ORF Nucleotide Sequence: >RC217237 representing NM_000759
 Red=Cloning site Blue=ORF Green=Tags(s)

TTTTGTAATACGACTCACTATAGGGCGCCGGGAATTCGTCGACTGGATCCGGTACCGAGGAGATCTGCC
 GCCCGCATCGCC

ATGGCTGGACCTGCCACCCAGAGCCCCATGAAGCTGATGGCCCTGCAGCTGCTGCTGTGGCACAGTGCAC
 TCTGGACAGTGCAGGAAGCCACCCCTGGGCCCTGCCAGCTCCCTGCCAGAGCTTCTGCTCAAGTG
 CTTAGAGCAAGTGAAGGATCCAGGGCGATGGCGCAGCGCTCCAGGAGAAGCTGGTGAAGTGTGCC
 ACCTACAAGCTGTGCCACCCGAGGAGCTGGTGTGCTCGGACACTCTCTGGGCATCCCTGGGCTCCCC
 TGAGCAGCTGCCAGCCAGGCCCTGCAGCTGGCAGGCTGCTTGAGCCAACCTCCATAGCGGCCTTTTCT
 CTACCAGGGCTCCTGCAGGCCCTGGAAGGGATCTCCCCGAGTTGGGTCCCACCTTGGACACACTGCAG
 CTGGACGTCGCGGACTTTGCCACCACCTCTGGCAGCAGATGGAAGAAGTGGGAATGGCCCTGCCCTGC
 AGCCACCCAGGGTGCCATGCCGGCCTTCGCTCTGCTTTCCAGCGCCGGGAGGAGGGTCTGTTGTC
 CTCCCATCTGCAGAGCTTCTGGAGGTGTCGTACCGCGTTCTACGCCACCTTGCCAGCC

ACGCGTACGCGGCCGCTCGAGCAGAACTCATCTCAGAAGAGGATCTGGCAGCAATGATATCCTGGATT
 ACAAGGATGACGACGATAAGGTTTAA

Protein Sequence: >RC217237 representing NM_000759
 Red=Cloning site Green=Tags(s)

MAGPATQSPMKLMALQLLWHSALWTVQEATPLGPASSLPQSFLKCLEQVRKIQGDGAALQEKLVSECA
 TYKLCHPEELVLLGHSLGIPWAPLSSCPSQALQLAGCLSQLHSLFLYQGLLQALEGISPELGPTLDTLQ
 LDVADFATTIWQMEELGMAPALQPTQGAMPAFASAFQRRAGGVLVASHLQSFLEVSRYRVLRLHAQP

TRTRPLEQKLISEEDLAANDILDYKDDDDKV



[View online »](#)

Reconstitution Method:

1. Centrifuge at 5,000xg for 5min.
2. Carefully open the tube and add 100ul of sterile water to dissolve the DNA.
3. Close the tube and incubate for 10 minutes at room temperature.
4. Briefly vortex the tube and then do a quick spin (less than 5000xg) to concentrate the liquid at the bottom.
5. Store the suspended plasmid at -20°C. The DNA is stable for at least one year from date of shipping when stored at -20°C.

RefSeq: [NM_000759.4](#)

RefSeq Size: 1518 bp

RefSeq ORF: 624 bp

Locus ID: 1440

UniProt ID: [P09919](#)

Cytogenetics: 17q21.1

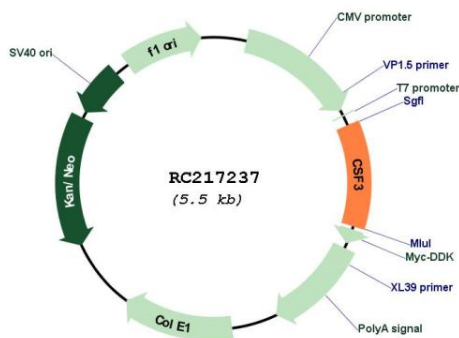
Protein Families: Druggable Genome, ES Cell Differentiation/IPS, Secreted Protein

Protein Pathways: Cytokine-cytokine receptor interaction, Hematopoietic cell lineage, Jak-STAT signaling pathway

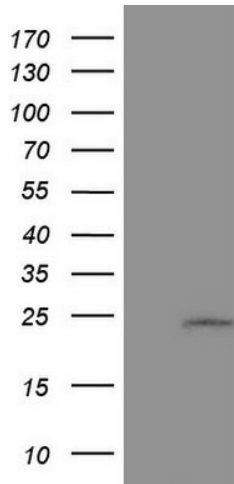
MW: 22.29 kDa

Gene Summary: This gene encodes a member of the IL-6 superfamily of cytokines. The encoded cytokine controls the production, differentiation, and function of granulocytes. Granulocytes are a type of white blood cell that are part of the innate immune response. A modified form of this protein is commonly administered to manage chemotherapy-induced neutropenia. Alternatively spliced transcript variants have been described for this gene. [provided by RefSeq, May 2020]

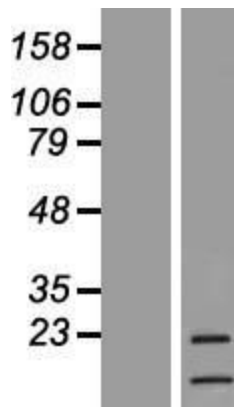
Product images:



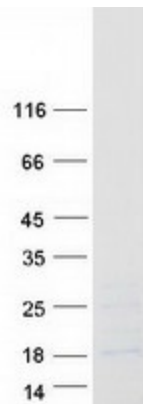
Circular map for RC217237



HEK293T cells were transfected with the pCMV6-ENTRY control (Cat# [PS100001], Left lane) or pCMV6-ENTRY CSF3 (Cat# RC217237, Right lane) cDNA for 48 hrs and lysed. Equivalent amounts of cell lysates (5 ug per lane) were separated by SDS-PAGE and immunoblotted with anti-CSF3 (Cat# [TA805267]). Positive lysates [LY400258] (100ug) and [LC400258] (20ug) can be purchased separately from OriGene.



Western blot validation of overexpression lysate (Cat# [LY400258]) using anti-DDK antibody (Cat# [TA50011-100]). Left: Cell lysates from untransfected HEK293T cells; Right: Cell lysates from HEK293T cells transfected with RC217237 using transfection reagent MegaTran 2.0 (Cat# [TT210002]).



Coomassie blue staining of purified CSF3 protein (Cat# [TP317237]). The protein was produced from HEK293T cells transfected with CSF3 cDNA clone (Cat# RC217237) using MegaTran 2.0 (Cat# [TT210002]).