

## Product datasheet for **RC216459**

### CD161 (KLRB1) (NM\_002258) Human Tagged ORF Clone

#### Product data:

**Product Type:** Expression Plasmids  
**Product Name:** CD161 (KLRB1) (NM\_002258) Human Tagged ORF Clone  
**Tag:** Myc-DDK  
**Symbol:** CD161  
**Synonyms:** CD161; CLEC5B; hNKR-P1A; NKR; NKR-P1; NKR-P1A; NKR-P1A  
**Mammalian Cell Selection:** Neomycin  
**Vector:** pCMV6-Entry (PS100001)  
**E. coli Selection:** Kanamycin (25 ug/mL)  
**ORF Nucleotide Sequence:** >RC216459 representing NM\_002258.  
Blue=ORF Red=Cloning site Green=Tag(s)

```
GCTCGTTTGTAGTGAACCGTCAGAATTTGTAAACGACTCACTATAGGGCGGCCGGGAATTCGTCGACTG
GATCCGGTACCGAGGAGATCTGCCGCCGCGATCGCC
ATGGACCAACAAGCAATATATGCTGAGTTAACTTACCCACAGACTCAGGCCAGAAAGTTCTTACCT
TCATCTCTTCTCGGGATGTCTGTGAGGTTACCTTGGCATCAATTTGCCCTGAAACTAGCTGTGCT
GGGATTATTCTCTTGTCTTGGTTGTTACTGGTTGAGTGTTCAGTGACATCCTAATACAGAAATCA
TCAATAGAAAAATGCAGTGTGGACATTCAACAGAGCAGGAATAAAACAACAGAGAGACCGGGTCTCTTA
AACTGCCCAATATATTGGCAGCAACTCCGAGAGAAATGCTTGTTATTTTCTCACACTGTCAACCCTTG
AATAACAGTCTAGCTGATTGTTCCACAAAGAATCCAGCCTGCTGCTTATTCGAGATAAGGATGAATTG
ATACACACACAGAACCTGATACGTGACAAAGCAATTCTGTTTTGGATTGGATTAATTTTTCATTATCA
GAAAAGAACTGGAAGTGATAAACGGCTCTTTTTAAATTCTAATGACTTAGAAATTAGAGGTGATGCT
AAAGAAAACAGCTGTATTTCCATCTCACAGACATCTGTGTATTCTGAGTACTGTAGTACAGAAATCAGA
TGGATCTGCCAAAAAGAACTAACACCTGTGAGAAATAAAGTGTATCCTGACTCT
ACGCGTACGCGGCCGCTCGAGCAGAACTCATCTCAGAAGAGGATCTGGCAGCAAATGATATCCTGGAT
TACAAGGATGACGACGATAAGGTTTAAACGGCCGGC
```

**Protein Sequence:** >Peptide sequence encoded by RC216459  
Blue=ORF Red=Cloning site Green=Tag(s)

```
MDQQAIYAEINLPTDSGPESSPSSLPRDVCQGSPPWHQFALKLSCAGIILLVLVVTGLSVSVTSLIQKS
SIEKCSVDIQSRNKTTTERPGLLNCPYIYQQLREKCLLFSHTVNPWNNSLADCSTKESLLLIRDKDEL
IHTQNLIRDKAILFWIGLNFSLSEKNWKWINGSFLNSNDLEIRGDAKENSISISQTSVYSEYCYSTEIR
WICQKELTPVRNKVYPDS
TRTRPLEQKLISEEDLAANDILDYKDDDDKV
```

**Chromatograms:** [https://cdn.origene.com/chromatograms/mk6444\\_h07.zip](https://cdn.origene.com/chromatograms/mk6444_h07.zip)





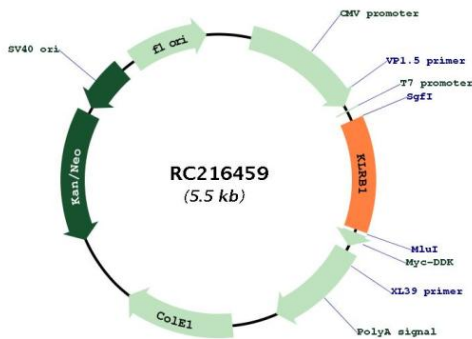
**Cytogenetics:** 12p13.31

**Protein Families:** Transmembrane

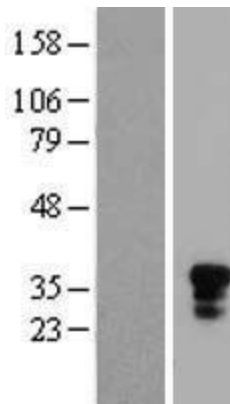
**MW:** 25.4 kDa

**Gene Summary:** Natural killer (NK) cells are lymphocytes that mediate cytotoxicity and secrete cytokines after immune stimulation. Several genes of the C-type lectin superfamily, including the rodent NKR1 family of glycoproteins, are expressed by NK cells and may be involved in the regulation of NK cell function. The KLRB1 protein contains an extracellular domain with several motifs characteristic of C-type lectins, a transmembrane domain, and a cytoplasmic domain. The KLRB1 protein is classified as a type II membrane protein because it has an external C terminus. [provided by RefSeq, Jul 2008]

**Product images:**



Circular map for RC216459



Western blot validation of overexpression lysate (Cat# [LY419438]) using anti-DDK antibody (Cat# [TA50011-100]). Left: Cell lysates from untransfected HEK293T cells; Right: Cell lysates from HEK293T cells transfected with RC216459 using transfection reagent MegaTran 2.0 (Cat# [TT210002]).