

Product datasheet for **RC216048**

IL32 (NM_001012633) Human Tagged ORF Clone

Product data:

Product Type: Expression Plasmids
Product Name: IL32 (NM_001012633) Human Tagged ORF Clone
Tag: Myc-DDK
Symbol: IL32
Synonyms: IL-32alpha; IL-32beta; IL-32delta; IL-32gamma; NK4; TAIF; TAIFa; TAIFb; TAIFc; TAIFd
Mammalian Cell Selection: Neomycin
Vector: pCMV6-Entry (PS100001)
E. coli Selection: Kanamycin (25 ug/mL)
ORF Nucleotide Sequence: >RC216048 representing NM_001012633
Red=Cloning site Blue=ORF Green=Tags(s)

TTTTGTAATACGACTCACTATAGGGCGGCCGGAATTCGTCGACTGGATCCGGTACCGAGGAGATCTGCC
GCC**CGATCGCC**

ATGTGCTTCCGAAGGTCTCTCTGATGACATGAAGAAGCTGAAGGCCGAATGCACCAGGCCATAGAAA
GATTTTATGATAAAATGCAAAATGCAGAATCAGGACGTGGACAGGTGATGTCGAGCCTGGCAGAGCTGGA
GGACGACTTCAAAGAGGGCTACCTGGAGACAGTGGCGGCTTATTATGAGGAGCAGCACCCAGAGCTCACT
CCTCTATTGAAAAGAAAGAGATGGATTACGGTGCCGAGGCAACAGATCCCCTGTCCGGATGTTGAGG
ATCCCGCAACCGAGGAGCCTGGGAGAGCTTTTGTACAAGTCTACGGAGCCCCACGGGGGACAAGGA
GGAGCTGACACCCAGAAGTGCTCTGAACCCCAATCCTCAAAA

ACGCGTACGCGGCCGCTCGAGCAGAACTCATCTCAGAAGAGGATCTGGCAGCAAATGATATCCTGGATT
ACAAGGATGACGACGATAAGGTTTAA

Protein Sequence: >RC216048 representing NM_001012633
Red=Cloning site Green=Tags(s)
MCFPKVLSDDMKLKARMHQAIERFYDKMQNAESGRGQVMSSLAELDDFKEGYLETVAAYYEEQHPFLT
PLFEKERDGLRCRGNRSPVPDVEDPATEEPGESFCDKSYGAPRGDKEELTPQKCSEPQSSK

TRTRPLEQKLISEEDLAANDILDYKDDDDKV

Chromatograms: https://cdn.origene.com/chromatograms/mk6488_g05.zip

Restriction Sites: SgfI-MluI

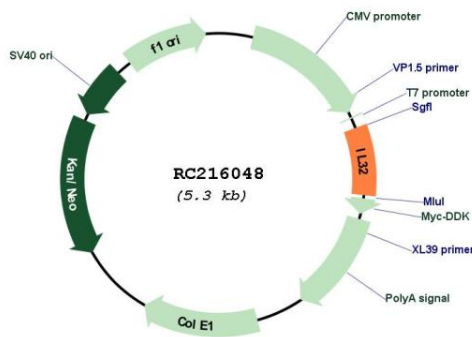


[View online »](#)

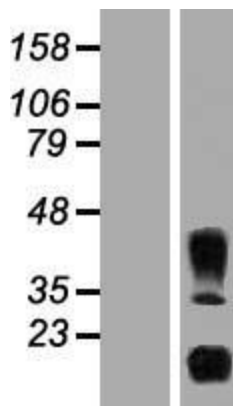
Cytogenetics: 16p13.3
Protein Families: Secreted Protein
MW: 14.7 kDa

Gene Summary: This gene encodes a member of the cytokine family. The protein contains a tyrosine sulfation site, 3 potential N-myristoylation sites, multiple putative phosphorylation sites, and an RGD cell-attachment sequence. Expression of this protein is increased after the activation of T-cells by mitogens or the activation of NK cells by IL-2. This protein induces the production of TNFalpha from macrophage cells. Alternate transcriptional splice variants, encoding different isoforms, have been characterized. [provided by RefSeq, Jul 2008]

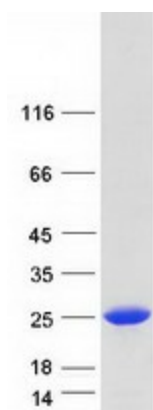
Product images:



Circular map for RC216048



Western blot validation of overexpression lysate (Cat# [LY422886]) using anti-DDK antibody (Cat# [TA50011-100]). Left: Cell lysates from untransfected HEK293T cells; Right: Cell lysates from HEK293T cells transfected with RC216048 using transfection reagent MegaTran 2.0 (Cat# [TT210002]).



Coomassie blue staining of purified IL32 protein (Cat# [TP316048]). The protein was produced from HEK293T cells transfected with IL32 cDNA clone (Cat# RC216048) using MegaTran 2.0 (Cat# [TT210002]).