

Product datasheet for RC215950

SMARCA2 (NM_139045) Human Tagged ORF Clone

Product data:

Product Type:	Expression Plasmids
Product Name:	SMARCA2 (NM_139045) Human Tagged ORF Clone
Tag:	Myc-DDK
Symbol:	SMARCA2
Synonyms:	BAF190; BIS; BRM; hBRM; hSNF2a; NCBRS; SNF2; SNF2L2; SNF2LA; Sth1p; SWI2
Vector:	pCMV6-Entry (PS100001)
E. coli Selection:	Kanamycin (25 ug/mL)
Cell Selection:	Neomycin
ORF Nucleotide Sequence:	>RC215950 representing NM_139045 Red=Cloning site Blue=ORF Green=Tags(s)

TTTTGTAATACGACTCACTATAGGGCGGCCGGAATTCGTCGACTGGATCCGGTACCGAGGAGATCTGCC
GCCGCGATCGCC

ATGTCCACGCCACAGACCCTGGTGCATGCCACCCAGGGCCTTCGCCGGGGCCTGGGCCTTCCCCTG
GGCCAATCTTGGGCCTAGTCCAGGACCAGGACCATCCCAGGTTCCGTCCACAGCATGATGGGGCCAAG
TCCTGGACCTCCAAGTGTCTCCATCCTATGCCGACGATGGGGTCCACAGACTTCCACAGGAAGGCATG
CATCAAATGCATAAGCCATCGATGGTATACATGACAAGGGGATTGTAGAAGACATCCATTGTGGATCCA
TGAAGGGCACTGGTATGCGACCCTCACCCAGGCATGGGCCCTCCCAGAGTCCAATGGATCAACACAG
CCAAGGTTATATGTCACCACACCCTCTCCATTAGGAGCCCAGAGCACGTCTCCAGCCCTATGTCTGGA
GGAGGCCCAACTCCACCTCAGATGCCACCAAGCCAGCCGGGGGCCCTCATCCCAGGTGATCCGCAGGCCA
TGAGCCAGCCCAACAGAGGTCCTCACCTTTAGTCCTGTCCAGCTGCATCAGCTTCGAGCTCAGATTTT
AGCTTATAAAATGCTGGCCCGAGGCCAGCCCTCCCCGAAACGCTGCAGCTTGCAGTCCAGGGGAAAAGG
ACGTTGCCTGGCTTGAGCAACAACAGCAGCAGCAACAGCAGCAGCAGCAGCAGCAGCAGCAGCAGCAGC
AGCAGCAACAGCAGCCGAGCAGCAGCCGCCAACCACAGCAGCAACAACAGCAGCCGGCCCTTGT
TAACTACAACAGACCATCTGGCCCGGGCCGAGCTGAGCGGCCGAGCACCCCGCAGAAGCTGCCGGTG
CCCGCGCCCGGGCCGCGCCCTCGCCCGCGCCCGCAGCCGCGCAGCCGCGCCGCGCCGAGTGCCTCG
GGCCCTCAGTGCCGAGCCGCCCCGGGGCAGCCCTCGCCCGTCTCCAGCTGCAGCAGAAGCAGAGCCG
CATCAGCCCCATCCAGAAACCGCAAGGCCTGGACCCCGTGAAATTTCTGCAAGAGCGGGAATACAGACTT
CAGGCCCGCATAGCTCATAGGATACAAGAACTGGAAAATCTGCCTGGCTCTTTGCCACCAGATTTAAGAA
CCAAAGCAACCGTGAACATAAAGCACTTCGGTTACTCAATTTCCAGCGTCAGCTGAGACAGGAGGTGGT
GGCCTGCATGCGCAGGGACAGACCCTGGAGACGGCTCTCAACTCAAAGCATACAAACGGAGCAAGCGC
CAGACTCTGAGAGAAGCTCGCATGACCGAGAAGCTGGAGAAGCAGCAGAAGATTGAGCAGGAGAGGAAAC
GCCGTCAGAAACACCAGGAATACCTGAACAGTATTTTGCAACATGCAAAAAGATTTAAGGAATATCATCG
GTCTGTGGCCGAAAGATCCAGAAGCTCTCAAAGCAGTGGCAACTTGGCATGCCAACACTGAAAGAGAG
CAGAAGAAGGAGACAGAGCGGATTGAAAAGGAGAGAATGCGGCGACTGATGGCTGAAGATGAGGAGGGTT



[View online »](#)

ATAGAAACTGATTGATCAAAAGAAAGACAGGCCTTTAGCTTACCTTTTGCAGCAGACCGATGAGTATGT
AGCCAATCTGACCAATCTGGTTTGGGAGCACAAGCAAGCCAGGCAGCCAAAGAGAAGAAGAAGAGGAGG
AGGAGGAAGAAGAAGGCTGAGGAGAATGCAGAGGGTGGGGAGTCTGCCCTGGGACCGGATGGAGAGCCCA
TAGATGAGAGCAGCCAGATGAGTGACCTCCCTGTCAAAGTGACTCACACGAAACCGCAAGGTTCTGTT
CGGACCAGAAGCACCAAAGCAAGTCAGCTGGACGCCTGGCTGGAATGAATCCTGGTTATGAAGTTGCC
CCTAGATCTGACAGTGAAGAGAGTGATTCTGATTATGAGGAAGAGGATGAGGAAGAAGAGTCCAGTAGGC
AGGAAACCGAAGAGAAAATACTCCTGGATCCAAATAGCGAAGAAGTTTCTGAGAAGGATGCTAAGCAGAT
CATTGAGACAGCTAAGCAAGACGTGGATGATGAATACAGCATGCAGTACAGTGCCAGGGCTCCCAGTCC
TACTACACCGTGGCTCATGCCATCTCGGAGAGGGTGGAGAAAACAGTCTGCCCTCCTAATTATGGGACCC
TAAAGCATTACCAGCTCCAGGCCTGGAATGGATGGTTTCCCTGTATAATAACAACCTGAACGGAATCTT
AGCCGATGAAATGGGGCTTGGAAAGACCATACAGACCATTGCACTCATCACTTATCTGATGGAGCACAAA
AGACTCAATGGCCCTATCTCATATTGTTCCCTTTGACTCTATCTAACTGGACATATGAATTTGACA
AATGGGCTCCTTCTGTGGTGAAGATTTCTACAAGGGTACTCCTGCCATGCGTCGCTCCCTGTCCCCCA
GCTACGGAGTGGCAAATCAATGTCCTTGTACTACTTATGAGTATATTATAAAGACAAGCACATTCTT
GCAAAGATTCGGTGGAAATACATGATAGTGAGCAGGAGCCACCGAATGAAGAATCACCCTGCAAGCTGA
CTCAGGCTTGAACACTCACTATGTGGCCCCAGAAAGGATCCTCTTGACTGGGACCCCGTGCAGATAA
GCTCCCTGAACCTCTGGGCCCTCCTCAACTTCTCCTCCCAACAATTTTTAAGAGCTGCAGCACATTTGAA
CAATGGTTCATGCTCCATTTGCCATGACTGGTGAAGGGTGGACTTAAATGAAGAAGAACTATATTGA
TCATCAGGCGTCTACATAAGGTGTTAAGACCATTTTTACTAAGGAGACTGAAGAAAGAAGTTGAATCCCA
GCTTCCGAAAAGTGGAAATATGTGATCAAGTGTGACATGTGACGCTTGCAGAGATTCTGTATCGCCAT
ATGCAAGCCAAGGGGATCCTTCTCACAGATGGTTCTGAGAAAGATAAGAAGGGGAAAGGAGGTGTAAGA
CACTTATGAACACTATTATGCAGTTGAGAAAACTGCAACCACCCATATATGTTTCAGCACATTTGAGGA
ATCCTTTGCTGAACACCTAGGCTATTCAAATGGGGTCAATCAATGGGGCTGAACGTATCCGGCCTCAGGG
AAGTTTGAGCTGCTTGTGCGTATTCTGCCAAAATGAGAGCGACTAATCACCGAGTGTGCTTTTTCTGCC
AGATGACATCTCTCATGACCATCATGGAGGATTATTTGCTTTTCGGAACCTCCTTTACCTACGCTTGA
TGGCACCACCAAGTCTGAAGATCGTGTGCTTTGCTGAAGAAATCAATGAACCTGGATCCAGTATTTT
ATTTTCTGCTGAGCACAAGAGCTGGTGGCCTGGGCTTAAATCTTCAGGCAGCTGATACAGTGGTATCT
TTGACAGCGACTGGAATCCTCATCAGGATCTGCAGGCCAAGACCGAGCTCACCGCATCGGCAGCAGAA
CGAGGTCCGGTACTGAGGCTCTGTACCGTGAACAGCGTGGAGGAAAAGATCCTCGCGGCCGAAAATAC
AAGCTGAACGTGGATCAGAAAGTATCCAGGCGGGCATGTTTGACCAAAGTCTTCAAGCCACGAGCGGA
GGGCAATCCTGCAGGCCATCTTGGAGCATGAGGAGGAAAATGAGGAAGAAGATGAAGTACCGGACGATGA
GACTCTGAACCAATGATTGCTCGACGAGAAGAAGAAATTTGACCTTTTTATGCGGATGGACATGGACCGG
CGGAGGGAAGATGCCCGAACCCGAAACGGAAGCCCGTTTAAATGGAGGAGGATGAGCTGCCCTCCTGGA
TCATTAAGGATGACGCTGAAGTAGAAAGGCTCACCTGTGAAGAAGAGGAGGAGAAAATATTTGGGAGGGG
GTCCCGCCAGCGCGTACAGTGGACTACAGTGCAGCCCTCACGGAGAAGCAGTGGCTAAGGGCCATCGAA
GACGGCAATTTGGAGGAAATGGAAGAGGAAGTACGGCTTAAAGAAGCGAAAAGACGAAGAATGTGGATA
AAGATCCTGCAAAAAGAAGATGTGGAAAAAGCTAAGAAGAGAAGAGGCCCGCCCTCCCGTGAAGAACTGTC
ACCAAAATCCCCAAACTGACAAAGCAGATGAACGCTATCATCGATACTGTGATAAACTACAAAGATAGT
TCAGGGCGACAGCTCAGTGAAGTCTTCAATTCAGTTACCTTCAAGGAAAGAATTACCAGAATACTATGAAT
TAATTAGGAAGCCAGTGGATTTCAAAAAATAAAGGAAAAGGATTTCGTAATCATAAGTACCGGAGCCTAGG
CGACCTGGAGAAGGATGTCATGTTCTCTGTACAACGCTCAGACGTTCAACCTGGAGGGATCCCAGATC
TATGAAGACTCCAATCGTCTTACAGTCAAGTGTAAAGAGTCCCGGAGAAAATTTGCCAAAGAGGAAGAGA
GTGAGGATGAAAGCAATGAAGAGGAGGAAGAGGAAGATGAAGAAGAGTCAAGTCCGAGGCAAAATCAGT
CAAGGTGAAAATTAAGCTCAATAAAAAAGATGACAAAGGCCGGGACAAAGGGAAGGCAAGAAAAGGCCA
AATCGAGGAAAAGCCAAACCTGTAGTGAAGGATTTTGCAGCGATGAGGAGCAGGATGAACGTGAACAGT
CAGAAGGAAGTGGGACGGATGATGAG

ACGCGTACGCGGCGCTCGAGCAGAACTCATCTCAGAAGAGGATCTGGCAGCAAATGATATCCTGGATT
ACAAGGATGACGACGAT AAGGTTTAA

Protein Sequence: >RC215950 representing NM_139045
 Red=Cloning site Green=Tags(s)

MSTPTDPGAMPHPGPSPGPGSPGPILGSPGPGSPGVSMMGSPGPPSVSHPMPTMGSTDFPQEGM
 HQMHKPIDGIHDKGIVEDIHCGSMKGTMRPPHPGMGPPQSPMDQHSQGYMSPHPSPLAGAPEHVSSPMSG
 GGPTPPQMPPSQPGALIPGDPQAMSQPNRGPSPFSPVQLHLQRAQILAYKMLARGQPLPETLQLAVQGKR
 TLPGLQQQQQQQQQQQQQQQQQQQQPPQPPQPTQQQQQPALVNYNRPSPGPEL SGPSTPQKLPV
 PAPGGRPSAPPAAAAQPPAAAVPGPSVPPAPGQPSVPLQLQQKQSRISPIQKPPQLDPVEILQEREYRL
 QARIAHRIQELENLPGSLPPDLRTKATVELKALRLLNFQRLRQEVVACMRDDTLETALNSKAYKRSKR
 QTLREARMTEKLEKQKQIEQERKRRQKHQEYLNLSILQHAKDFKEYHRSVAGKIQKLSKAVATWHANTERE
 QKKETERIEKERMRRLMAEDEEGYRKLIDQKDRRLAYLLQQTDEYVANL TNLVWEHKQAQAAKEKKRRR
 RRRKKAENAEGGESALGPDGEPIDESSQMSDLPVKVTHTETGKVLFGPEAPKASQLDAWLEMNPGYEVA
 PRSDSESDSYEEDEEEESSRQETEEKILLDPNSEEVSEKDAKQI IETAKQDVDEYSMQYSARGSQS
 YYTVAHAISERVEKQSALLINGTLKHYQLQGLEWVSLYNNNLNGILADEMGLGKTIQTIALITYLMEHK
 RLNGPYLIIIVPLSTLSNWTYEFDKWAPSVVKISYKGPAMRRSLVPQLRSGKFNVLTTTYEYIIKDKHIL
 AKIRWKYMIIVDEGHRMKNHHCKLTQVLNTHYVAPRRILLTGTPQLNKLPELWALLNFLPTIFKSCSTFE
 QWFNAPFAMTGERVDLNEEETILIIIRLHKVLRPFLRRLKKEVESQLPEKVEYVIKCDMSALQKILYRH
 MQAKGILLTDGSEKDKKGGAKTLMNTIMQLRKICNHPYMFQHIIEESFAEHLGYSNGVINGAELYRASG
 KFELLDRIPLKLRATNHRVLLFCQMTSLMTIMEDYFAFRNFLYLRLDGTGKSEDRAALLKFNPEGSQYF
 IFLLSTRAGGLNLQAADTVVIFDSDWNPHQDLQAQDRHRIGQQNEVRVLRCLTVNSVEEKILAAKY
 KLNVDQKVIQAGMFDQKSSSHERRAFLQAILHEEENEDEEVPDDETLNQMIARREEFDLFRMDMDR
 RREDARNPKRKPRLMEDELPSWIIKDDAEVERLTCEEEEEKIFGRGSRQRDQVSDALTEKQWLRRAIE
 DGNLEEMEEVRLKRRKRRRNVDKPAKEDVEKAKRRRGRPPAEKLSNPPKLTQMNAIIDTVINYKDS
 SGRQLSEVFIQLPSRKELPEYELIRKPVDFKIKERIRNHKYRSLGDLEKDVMLLCHNAQTFNLEGSQI
 YEDSIVLQSVFKSARQKIAKEESEDESENEEEEEDEESESEAKSVKVIKLNKKDDKGRDKGKRRP
 NRGKAKPVVSDFDSEEQDEREQSESGTDDE

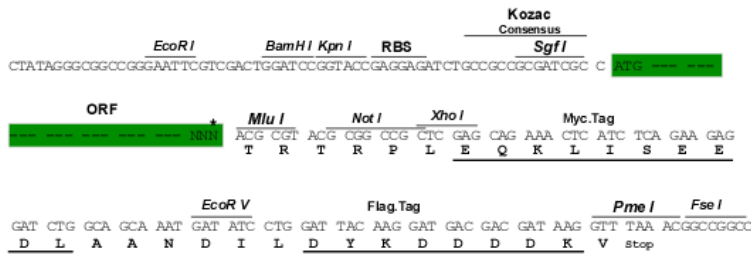
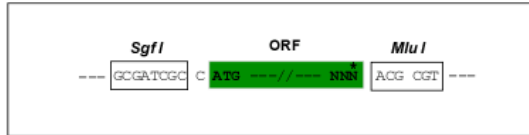
TRTRPLEQKLISEEDLAANDILDYKDDDDKV

Restriction Sites:

SgfI-MluI

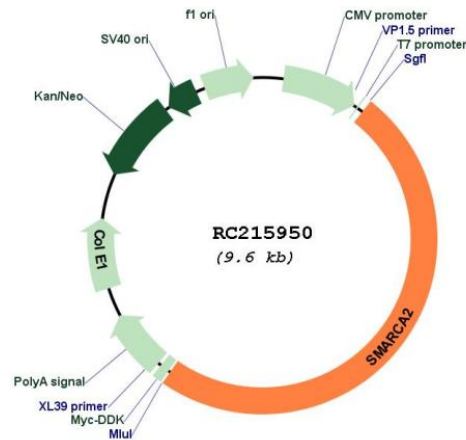
Cloning Scheme:

Cloning sites used for ORF Shuttling:



* The last codon before the Stop codon of the ORF

Plasmid Map:



ACCN: NM_139045

ORF Size: 4716 bp

OTI Disclaimer: The molecular sequence of this clone aligns with the gene accession number as a point of reference only. However, individual transcript sequences of the same gene can differ through naturally occurring variations (e.g. polymorphisms), each with its own valid existence. This clone is substantially in agreement with the reference, but a complete review of all prevailing variants is recommended prior to use. [More info](#)

OTI Annotation: This clone was engineered to express the complete ORF with an expression tag. Expression varies depending on the nature of the gene.

Components: The ORF clone is ion-exchange column purified and shipped in a 2D barcoded Matrix tube containing 10ug of transfection-ready, dried plasmid DNA (reconstitute with 100 ul of water).

Reconstitution Method:

1. Centrifuge at 5,000xg for 5min.
2. Carefully open the tube and add 100ul of sterile water to dissolve the DNA.
3. Close the tube and incubate for 10 minutes at room temperature.
4. Briefly vortex the tube and then do a quick spin (less than 5000xg) to concentrate the liquid at the bottom.
5. Store the suspended plasmid at -20°C. The DNA is stable for at least one year from date of shipping when stored at -20°C.

RefSeq: [NM_139045.4](#)

RefSeq Size: 5703 bp

RefSeq ORF: 4719 bp

Locus ID: 6595

UniProt ID: [P51531](#)

Cytogenetics: 9p24.3

Protein Families: Druggable Genome

MW: 179.1 kDa

Gene Summary: The protein encoded by this gene is a member of the SWI/SNF family of proteins and is highly similar to the brahma protein of *Drosophila*. Members of this family have helicase and ATPase activities and are thought to regulate transcription of certain genes by altering the chromatin structure around those genes. The encoded protein is part of the large ATP-dependent chromatin remodeling complex SNF/SWI, which is required for transcriptional activation of genes normally repressed by chromatin. Alternatively spliced transcript variants encoding different isoforms have been found for this gene, which contains a trinucleotide repeat (CAG) length polymorphism. [provided by RefSeq, Jan 2014]