

## Product datasheet for **RC215903**

### **SARM (SARM1) (NM\_015077) Human Tagged ORF Clone**

#### **Product data:**

Product Type:	Expression Plasmids
Product Name:	SARM (SARM1) (NM_015077) Human Tagged ORF Clone
Tag:	Myc-DDK
Symbol:	SARM
Synonyms:	hSARM1; HsTIR; MyD88-5; SAMD2; SARM
Mammalian Cell Selection:	Neomycin
Vector:	pCMV6-Entry (PS100001)
E. coli Selection:	Kanamycin (25 ug/mL)



[View online »](#)

**ORF Nucleotide  
Sequence:**

>RC215903 representing NM\_015077  
 Red=Cloning site Blue=ORF Green=Tags(s)

TTTTGTAATACGACTCACTATAGGGCGGCCGGGAATTCGTCGACTGGATCCGGTACCGAGGAGATCTGCC  
 GCC**CGATCGCC**

ATGGTCTGACGCTGTTCTCTCCGCTACAAGCTGTGTGCTTCTTCGCCATGTGCGGGCCACGGCCGG  
 GCGCCGAGCGGCTGGCGGTGCCTGGGCCAGATGGGGCGGTGGCACGGGCCATGGTGGCTGCGGGTGG  
 CCGGGGCCCGCAAGTGTGCGCGGGGCGAGCACCGAGGTGCAGGACGCCCTGGAGCGCGCTGCCG  
 GAGCTGCAGCAGGCTTGTCCGCGCTGAAGCAGGCGGGCGCGCGGGCCGTGGGCGCCGGCTGGCCG  
 AGGTCTTCCAAGTGGTGGAGGAGGCTGGCTGCTGCCGGCGTGGGCCGCGAGGTAGCCAGGGTCTGTG  
 CGACGCCATCCGCTCGATGGCGGCTCGACCTGCTGTTGCGGCTGCTGCAGGCGCCGGAGTTGGAGACG  
 CGTGTGCAGGCGCGCGCTGCTGGAGCAGATCCTGGTGGCTGAGAACCAGACCGCGTGGCGCGCATTG  
 GGCTGGCGGTGATCCTGAACCTGGCGAAGGAACCGAACCCGTAGAGCTGGCGCGGAGCGTGGCAGGCAT  
 CTTGGAGCACATGTTCAAGCATTCCGAGGAGACATGCCAGAGGCTGGTGGCGGCCGGCGGCTGGACGCG  
 GTGCTGTATTGGTGGCGCGCACGGACCCCGCGCTGCTGCGCCACTGCGCGCTGGCGCTGGGCAACTGCC  
 CGCTGCACGGGGCCAGGCGGTGCAGCGACGCATGGTAGAGAAGCGCGCAGCCGAGTGGCTCTTCCCGCT  
 CGCCTTCTCAAGGAGGACGAGCTGTTTCGGCTGCACGCTGCCTCGCAGTAGCGGTGTTGGCGACTAAC  
 AAGGAGGTGGAGCGCGAGGTGGAGCGCTCGGGCACGCTGGCGCTCGTGGAGCCGCTTGTGGCCTCGCTGG  
 ACCCTGGCCGCTTCGCCCCTGTCTGGTGGACGCCAGCGACACAAGCCAGGGCCGCGGGCCGACGACCT  
 GCAGCGCTCGTCCGCTGCTCGACTCTAACCGCTTGGAGGCGCAGTGCATCGGGGCTTCTACCTCTGC  
 GCCGAGGCTGCCATCAAGAGCCTGCAAGGCAAGACCAAGGTGTTACGCGACATCGGCGCCATCCAGAGCC  
 TGAACGCCTGGTTTCTACTCTACCAATGGCCTAAGTGGCGCTGGCAAGCGCGCTGCGCCTGCT  
 GGGCGAGGAGGTGCCACGGCCATCCTGCCCTCCGTGCCAGCTGGAAGGAGGCCGAGGTTAGACAGTGG  
 CTGCAGCAGATCGTTTTCTCAAGTACTGCGAGAGCTTCCGGGAGCAGCAGGTGGATGGCGACCTGCTTC  
 TGCGGCTCACGGAGGAGAACTCCAGACCGACCTGGGCATGAAATCGGGCATCACCCGAAGAGTTCTT  
 TAGGGAGCTCACGGAGCTCAAGACCTTCGCCAATTCTACGTGCGACCGCAGCAACCTGGCGGACTGG  
 CTGGGCAGCCTGGACCCGCGCTCCGCCAGTACACCTACGGCCTGGTCCAGCTGCGGCTGGACCGCTCCC  
 TGCTGCACCGCGTGTCTGAGCAGCAGCTGCTGGAAGACTGCGGCATCCACCTGGGCGTGCACCGCGCCC  
 CATCCTCACGGCGCCAGAGAAATGCTACACTCCCGCTGCCCTGTACTGGTGGCAAACCCAGTGGGGAC  
 ACTCCAGATGTCTTATCAGCTACCGCCGGAACCTCAGGTTCCAGCTGGCCAGTCTCCTGAAGGTGCACC  
 TGCAGTGCATGGCTTCAAGTGTCTTATTGATGTGGAGAAGCTGGAAGCAGGCAAGTTCGAGGACAACT  
 CATCCAGAGTGTATGGGTGCCCGCAACTTTGTGTTGGTGTATCACCTGGAGCACTGGCAAGTGCATG  
 CAAGACCATGACTGCAAGGATTGGGTGCATAAGGAGATTGTGACTGCTTTAAGCTGCGGCAAGAATTG  
 TGCCCATCATTGATGGCTTCGAGTGGCCTGAGCCCCAGGCTCCTGCCTGAGGACATGCAGGCTGTGCTTAC  
 TTCAACGGTATCAAGTGGTCCCACGAATACCAGGAGGCCACCATGAGAAGATCATCCGCTTCTGCAG  
 GGCCGCTCCTCCCGGACTCATCTGCAGGCTCTGACACCAGTTTGGAGGGTGTGCACCCATGGGTCCAA  
 CC

**AGCGGACCGACGCGTACGCGCCGCTCGAGCAGAACTCATCTCAGAAGAGGATCTGGCAGCAAATGATATCC**  
**TGGATTACAAGGATGACGACGATAAGGTTTAA**

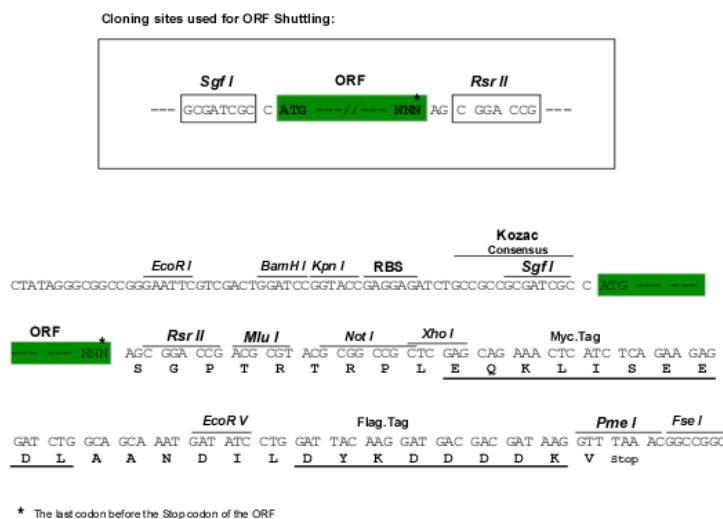
**Protein Sequence:** >RC215903 representing NM\_015077  
Red=Cloning site Green=Tags(s)

MVL TLLLSAYKLCRFFAMSGPRPGAERLAVPGPDGGGGTGPWWAAGGRGPREVSPGAGTEVQDALERALP  
 ELQQAL SALKQAGGARAVGAGLAEVFQLVEEAWLLPAVGREVAQGLCDAIRLDGGLDLLRLQAPELET  
 RVQAARLLEQILVAENRDRVARIGLVILNLAKEREPVELARSVAGILEHMFKHSEETCQRLVAAGGLDA  
 VLYWCRRTDPALLRHCALALGNALHGGQAVQRRMVEKRAAEWLFPLAFSKEDELLRLHACLAVAVLATN  
 KEVEREVERSGTLALVEPLVASLDPGRFARCLVDASDTSQGRGPDDLQRLVPLLDNRLEAQCIGAFYLC  
 AEAAIKSLQGGTKVFSIDIGAIQSLKRLVSYSTNGTKSALAKRALRLLGEEVPRPILPSVPSWKEAEVQTW  
 LQQIGFSKYCESFREQQVDGDLRLRTEELQTDLGMKSGITRKRFFRELTELKTFANYSTCDRSNLADW  
 LGSLDPRFRQYTYGLVSCGLDRSLLHRVSEQQLLEDGCIHLGVHRARILTAAREMLHSPLPCTGGKPSGD  
 TPDVVISYRRNSGSQLASLLKVHLQLHGFVSFIDVEKLEAGKFEDKLIQSVMGARNFVVLVSPGALDKCM  
 QDHDCKDWHKEIVTALSCGKNIVPIIDGFWEPEPQVLPEDMQAVLTFNGIKWSHEYQEATIEKIIIRFLQ  
 GRSSRDSSAGSDTSLEGAAPMGPT

SGPTRRRLEQKLISEEDLAANDILDYKDDDDKV

**Restriction Sites:** SgfI-RsrII

**Cloning Scheme:**



**ACCN:** NM\_015077

**ORF Size:** 2172 bp

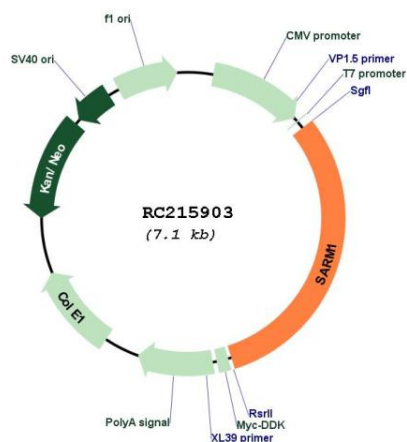
**OTI Disclaimer:** The molecular sequence of this clone aligns with the gene accession number as a point of reference only. However, individual transcript sequences of the same gene can differ through naturally occurring variations (e.g. polymorphisms), each with its own valid existence. This clone is substantially in agreement with the reference, but a complete review of all prevailing variants is recommended prior to use. [More info](#)

**OTI Annotation:** This clone was engineered to express the complete ORF with an expression tag. Expression varies depending on the nature of the gene.

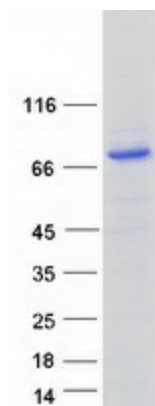
**Components:** The ORF clone is ion-exchange column purified and shipped in a 2D barcoded Matrix tube containing 10ug of transfection-ready, dried plasmid DNA (reconstitute with 100 ul of water).

<b>Reconstitution Method:</b>	<ol style="list-style-type: none"><li>1. Centrifuge at 5,000xg for 5min.</li><li>2. Carefully open the tube and add 100ul of sterile water to dissolve the DNA.</li><li>3. Close the tube and incubate for 10 minutes at room temperature.</li><li>4. Briefly vortex the tube and then do a quick spin (less than 5000xg) to concentrate the liquid at the bottom.</li><li>5. Store the suspended plasmid at -20°C. The DNA is stable for at least one year from date of shipping when stored at -20°C.</li></ol>
<b>RefSeq:</b>	<a href="#">NM_015077.4</a>
<b>RefSeq Size:</b>	7001 bp
<b>RefSeq ORF:</b>	2175 bp
<b>Locus ID:</b>	23098
<b>UniProt ID:</b>	<a href="#">Q6SZW1</a>
<b>Cytogenetics:</b>	17q11.2
<b>Domains:</b>	TIR, SAM
<b>Protein Families:</b>	Druggable Genome
<b>MW:</b>	79.2 kDa
<b>Gene Summary:</b>	Negative regulator of MYD88- and TRIF-dependent toll-like receptor signaling pathway which plays a pivotal role in activating axonal degeneration following injury. Promotes Wallerian degeneration an injury-induced axonal death pathway which involves degeneration of an axon distal to the injury site. Can activate neuronal death in response to stress. Regulates dendritic arborization through the MAPK4-JNK pathway. Involved in innate immune response. Inhibits both TICAM1/TRIF- and MYD88-dependent activation of JUN/AP-1, TRIF-dependent activation of NF-kappa-B and IRF3, and the phosphorylation of MAPK14/p38. [UniProtKB/Swiss-Prot Function]

Product images:



Circular map for RC215903



Coomassie blue staining of purified SARM1 protein (Cat# [TP315903]). The protein was produced from HEK293T cells transfected with SARM1 cDNA clone (Cat# RC215903) using MegaTran 2.0 (Cat# [TT210002]).