

## Product datasheet for **RC215350**

### PLAUR (NM\_001005377) Human Tagged ORF Clone

#### Product data:

**Product Type:** Expression Plasmids  
**Product Name:** PLAUR (NM\_001005377) Human Tagged ORF Clone  
**Tag:** Myc-DDK  
**Symbol:** PLAUR  
**Synonyms:** CD87; U-PAR; UPAR; URKR  
**Mammalian Cell Selection:** Neomycin  
**Vector:** pCMV6-Entry (PS100001)  
**E. coli Selection:** Kanamycin (25 ug/mL)  
**ORF Nucleotide Sequence:** >RC215350 representing NM\_001005377  
Red=Cloning site Blue=ORF Green=Tags(s)

TTTTGTAATACGACTCACTATAGGGCGGCCGGAATTCGTCGACTGGATCCGGTACCGAGGAGATCTGCC  
GCC**CGGATCGCC**

ATGGGTCACCCGCGCTGCTGCCGCTGCTGCTGCTGCTCCACACCTGCGTCCCAGCCTCTTGGGGCCTGC  
GGTGCATGCAGTGTAAAGACCAACGGGGATTGCCGTGTGGAAGAGTGCGCCCTGGGACAGGACCTCTGCAG  
GACCACGATCGTGCCTTGTGGGAAGAAGGAGAAGAGCTGGAGCTGGTGGAGAAAAGCTGTACCCACTCA  
GAGAAGACCAACAGGACCCTGAGCTATCGGACTGGCTTGAAGATCACCAGCCTTACCGAGGTTGTGTGTG  
GGTTAGACTTGTGCAACCAGGGCAACTCTGGCCGGGCTGTACCTATTCCGAAGCGTTACCTCGAATG  
CATTTCCTGTGGCTCATCAGACATGAGCTGTGAGAGGGGCGGCCACCAGAGCCTGCAGTGCCGACGCCCT  
GAAGAACAGTGCCTGGATGTGGTGACCCACTGGATCCAGGAAGGTGAAGAAGTCCCTGGAGCTTGAAAATC  
TGCCGCAGAATGGCCGCCAGTGTACAGCTGCAAGGGGAACAGCACCCATGGATGCTCCTCTGAAGAGAC  
TTTCCTCATTGACTGCCGAGGCCCATGAATCAATGTCTGGTAGCCACCGGCACTCACGAACCGAAAAAC  
CAAAGCTATATGGTAAGAGGCTGTGCAACCGCCTCAATGTGCCAACATGCCACCTGGGTGACGCCCTTCA  
GCATGAACCACATTGATGTCTCCTGTGTAATAAAGTGGCTGTAACCACCCAGACCTGGATGTCCAGTA  
CCGCAGTGGGGCTGCTCCTCAGCCTGGCCCTGCCATCTCAGCCTCACCATCACCTGCTAATGACTGCC  
AGACTGTGGGGAGGCACTCTCCTCTGGACC

**ACGCGT**ACGCGGGCGCTCGAGCAGAAACTCATCTCAGAAGAGGATCTGGCAGCAAATGATATCCTGGATT  
ACAAGGATGACGACGATAAGGTTTAA



[View online »](#)

**Protein Sequence:** >RC215350 representing NM\_001005377  
Red=Cloning site Green=Tags(s)

MGHPPLLPLLLLHTCVPASWGLRCMQCKTNGDCRVEECALGQDLCRTTIVRLWEEGEELELVEKSCHTS  
 EKTNRTLSYRTGLKITSLETVVCGLDLNCQNGNSGRAVITYSRARYLECISCGSSDMSRCERGRHQLQCRSP  
 EEQCLDVVTHWIQEGEEVLELENLPNQGRQCYSCCKGNSTHGCSSSEETFLIDCRGPMNQCLVATGTHEPKN  
 QSYMVRGCATASMCQHAHLGDAF SMNHIDVSCCTKSGCNHPDL DVQYRSGAAPQPGPAHL SLTITLLMTA  
 RLWGGTLLWT

TRTRPLEQKLISEEDLAANDILDYKDDDDKV

**Chromatograms:** [https://cdn.origene.com/chromatograms/mk8049\\_g12.zip](https://cdn.origene.com/chromatograms/mk8049_g12.zip)

**Restriction Sites:** SgfI-MluI

**Cloning Scheme:**

Cloning sites used for ORF Shuttling:



\* The last codon before the Stop codon of the ORF

**ACCN:** NM\_001005377

**ORF Size:** 870 bp

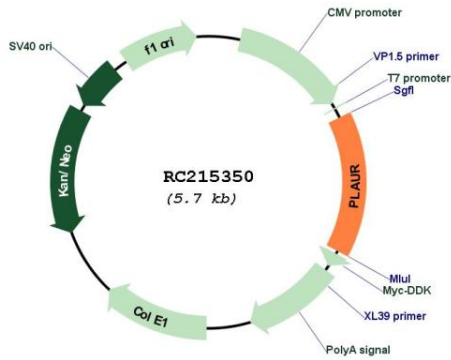
**OTI Disclaimer:** The molecular sequence of this clone aligns with the gene accession number as a point of reference only. However, individual transcript sequences of the same gene can differ through naturally occurring variations (e.g. polymorphisms), each with its own valid existence. This clone is substantially in agreement with the reference, but a complete review of all prevailing variants is recommended prior to use. [More info](#)

**OTI Annotation:** This clone was engineered to express the complete ORF with an expression tag. Expression varies depending on the nature of the gene.

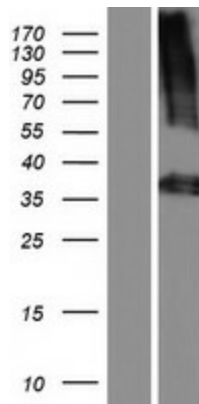
**Components:** The ORF clone is ion-exchange column purified and shipped in a 2D barcoded Matrix tube containing 10ug of transfection-ready, dried plasmid DNA (reconstitute with 100 ul of water).

<b>Reconstitution Method:</b>	<ol style="list-style-type: none"><li>1. Centrifuge at 5,000xg for 5min.</li><li>2. Carefully open the tube and add 100ul of sterile water to dissolve the DNA.</li><li>3. Close the tube and incubate for 10 minutes at room temperature.</li><li>4. Briefly vortex the tube and then do a quick spin (less than 5000xg) to concentrate the liquid at the bottom.</li><li>5. Store the suspended plasmid at -20°C. The DNA is stable for at least one year from date of shipping when stored at -20°C.</li></ol>
<b>RefSeq:</b>	<a href="#">NM_001005377.3</a>
<b>RefSeq Size:</b>	1413 bp
<b>RefSeq ORF:</b>	873 bp
<b>Locus ID:</b>	5329
<b>UniProt ID:</b>	<a href="#">Q03405</a>
<b>Cytogenetics:</b>	19q13.31
<b>Protein Families:</b>	Druggable Genome, Secreted Protein
<b>Protein Pathways:</b>	Complement and coagulation cascades
<b>MW:</b>	32.02 kDa
<b>Gene Summary:</b>	<p>This gene encodes the receptor for urokinase plasminogen activator and, given its role in localizing and promoting plasmin formation, likely influences many normal and pathological processes related to cell-surface plasminogen activation and localized degradation of the extracellular matrix. It binds both the proprotein and mature forms of urokinase plasminogen activator and permits the activation of the receptor-bound pro-enzyme by plasmin. The protein lacks transmembrane or cytoplasmic domains and may be anchored to the plasma membrane by a glycosyl-phosphatidylinositol (GPI) moiety following cleavage of the nascent polypeptide near its carboxy-terminus. However, a soluble protein is also produced in some cell types. Alternative splicing results in multiple transcript variants encoding different isoforms. The proprotein experiences several post-translational cleavage reactions that have not yet been fully defined. [provided by RefSeq, Jul 2008]</p>

Product images:



Circular map for RC215350



Western blot validation of overexpression lysate (Cat# [LY423710]) using anti-DDK antibody (Cat# [TA50011-100]). Left: Cell lysates from untransfected HEK293T cells; Right: Cell lysates from HEK293T cells transfected with RC215350 using transfection reagent MegaTran 2.0 (Cat# [TT210002]).