

Product datasheet for **RC215076**

C19orf63 (EMC10) (NM_175063) Human Tagged ORF Clone

Product data:

Product Type:	Expression Plasmids
Product Name:	C19orf63 (EMC10) (NM_175063) Human Tagged ORF Clone
Tag:	Myc-DDK
Symbol:	C19orf63
Synonyms:	C19orf63; HSM1; HSS1
Mammalian Cell Selection:	Neomycin
Vector:	pCMV6-Entry (PS100001)
E. coli Selection:	Kanamycin (25 ug/mL)
ORF Nucleotide Sequence:	>RC215076 representing NM_175063 Red=Cloning site Blue=ORF Green=Tags(s)

TTTTGTAATACGACTCACTATAGGGCGGCCGGAATTCGTCGACTGGATCCGGTACCGAGGAGATCTGCC
GCC**CGATCGCC**

ATGGCGGCAGCCAGCGCTGGGGCAACCCGGCTGCTCCTGCTCTTGCTGATGGCGGTAGCAGCGCCAGTC
GAGCCCGGGCAGCGGCTGCCGGCCGGGACTGGTGCAGAGGGGCTGGGGCGGAAGGTCGAGAGGGCGA
GGCCTGTGGCACGGTGGGGCTGCTGCTGGAGCACTCATTGAGATCGATGACAGTGCCAACCTCCGGAAG
CGGGGCTCACTGCTCTGGAACCAGCAGGATGGTACCTTGTCCCTGTACAGCGGCAGCTCAGCGAGGAGG
AGCGGGGCGGACTCCGGGATGTGGCAGCCCTGAATGGCCTGTACCGGGTCCGGATCCAAGGCGACCCGG
GGCCTGGATGGCCTGGAAGCTGGTGGCTATGTCTCCTCCTTTGTCCCTGCGTGCCTCCTGGTGGAGTCG
CACCTGTTCGGACCACTGACCCTGCACGTGGATGTGGCCGGCAACGTGGTGGGCGTGTGGTGGTACGC
ACCCCGGGGGCTGCCGGGGCCATGAGGTGGAGGACGTGGACCTGGAGCTGTTCAACACCTCGGTGCAGCT
GCAGCCGCCACACAGCCCGGAGCCCTGAGACGGCGGCCTTCAATGAGCGCCTGGAGATGGAACAGGCC
CAGAAGGCCAAGAACCCCGAGGAGCAGAAGTCTTCTCGCCAAATACTGGCACATCATCTGGGGGGG
CCGTGTTGCTCACAGCCCTGCGTCTGCTGCGCCAGGGCCCGCCACCGCCACAGGAGGCC

ACGCGTACGCGGCGGCTCGAGCAGAACTCATCTCAGAAGAGGATCTGGCAGCAAATGATATCCTGGATT
ACAAGGATGACGACGATAAGGTTTAA



[View online »](#)

Protein Sequence: >RC215076 representing NM_175063
Red=Cloning site Green=Tags(s)

MAAASAGATRLLLLLLMAVAAPSRARGSGCRAGTGARGAGAEGREGEACGTVGLLLEHSFEIDDSANFRK
 RGSLLWNQQDGTLSLSQRQLSEEERGLRDVAALNGLYRVRIIPRRPGALDGLEAGGYVSSFPACSLVES
 HLSQDLTLHVDVAGNVVGVSVVTHPGGCRGHEVEDVDLELFNTSVQLQPPTTAPGPETAFAFIERLEMEQA
 QKAKNPQEQKSFFAKYWHIILGGAVLLTALRPAAPGPAPPPQEA

TRTRPLEQKLISEEDLAANDILDYKDDDDKV

Chromatograms: https://cdn.origene.com/chromatograms/mk8013_b09.zip

Restriction Sites: SgfI-MluI

Cloning Scheme:

Cloning sites used for ORF Shuttling:



* The last codon before the Stop codon of the ORF

ACCN: NM_175063

ORF Size: 762 bp

OTI Disclaimer: The molecular sequence of this clone aligns with the gene accession number as a point of reference only. However, individual transcript sequences of the same gene can differ through naturally occurring variations (e.g. polymorphisms), each with its own valid existence. This clone is substantially in agreement with the reference, but a complete review of all prevailing variants is recommended prior to use. [More info](#)

OTI Annotation: This clone was engineered to express the complete ORF with an expression tag. Expression varies depending on the nature of the gene.

Components: The ORF clone is ion-exchange column purified and shipped in a 2D barcoded Matrix tube containing 10ug of transfection-ready, dried plasmid DNA (reconstitute with 100 ul of water).

Reconstitution Method:

1. Centrifuge at 5,000xg for 5min.
2. Carefully open the tube and add 100ul of sterile water to dissolve the DNA.
3. Close the tube and incubate for 10 minutes at room temperature.
4. Briefly vortex the tube and then do a quick spin (less than 5000xg) to concentrate the liquid at the bottom.
5. Store the suspended plasmid at -20°C. The DNA is stable for at least one year from date of shipping when stored at -20°C.

RefSeq: [NM_175063.6](#)

RefSeq Size: 2740 bp

RefSeq ORF: 765 bp

Locus ID: 284361

UniProt ID: [Q5UCC4](#)

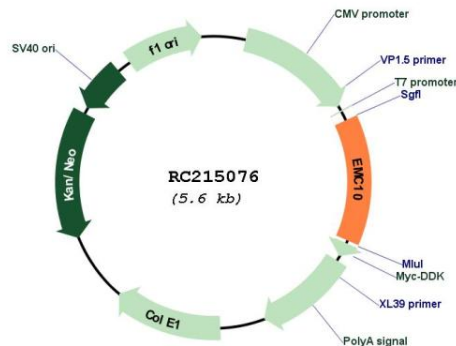
Cytogenetics: 19q13.33

Protein Families: Transmembrane

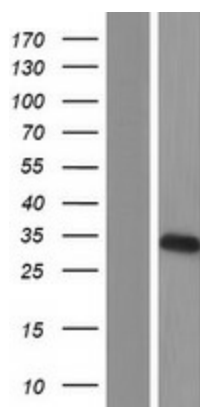
MW: 26.6 kDa

Gene Summary: Promotes angiogenesis and tissue repair in the heart after myocardial infarction. Stimulates cardiac endothelial cell migration and outgrowth via the activation of p38 MAPK, PAK and MAPK2 signaling pathways.[UniProtKB/Swiss-Prot Function]

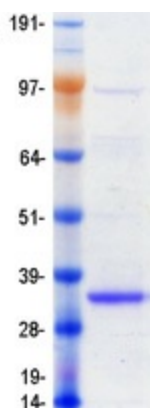
Product images:



Circular map for RC215076



Western blot validation of overexpression lysate (Cat# [LY406303]) using anti-DDK antibody (Cat# [TA50011-100]). Left: Cell lysates from untransfected HEK293T cells; Right: Cell lysates from HEK293T cells transfected with RC215076 using transfection reagent MegaTran 2.0 (Cat# [TT210002]).



Coomassie blue staining of purified EMC10 protein (Cat# [TP315076]). The protein was produced from HEK293T cells transfected with EMC10 cDNA clone (Cat# RC215076) using MegaTran 2.0 (Cat# [TT210002]).