

## Product datasheet for **RC214928L3V**

### IGF1 Receptor (IGF1R) (NM\_000875) Human Tagged ORF Clone Lentiviral Particle

#### Product data:

Product Type:	Lentiviral Particles
Product Name:	IGF1 Receptor (IGF1R) (NM_000875) Human Tagged ORF Clone Lentiviral Particle
Symbol:	IGF1 Receptor
Synonyms:	CD221; IGFIR; IGFR; JTK13
Mammalian Cell Selection:	Puromycin
Vector:	pLenti-C-Myc-DDK-P2A-Puro (PS100092)
Tag:	Myc-DDK
ACCN:	NM_000875
ORF Size:	4101 bp
ORF Nucleotide Sequence:	The ORF insert of this clone is exactly the same as(RC214928).
OTI Disclaimer:	The molecular sequence of this clone aligns with the gene accession number as a point of reference only. However, individual transcript sequences of the same gene can differ through naturally occurring variations (e.g. polymorphisms), each with its own valid existence. This clone is substantially in agreement with the reference, but a complete review of all prevailing variants is recommended prior to use. <a href="#">More info</a>
OTI Annotation:	This clone was engineered to express the complete ORF with an expression tag. Expression varies depending on the nature of the gene.
RefSeq:	<a href="#">NM_000875.2</a>
RefSeq Size:	4989 bp
RefSeq ORF:	4104 bp
Locus ID:	3480
UniProt ID:	<a href="#">P08069</a>
Cytogenetics:	15q26.3
Protein Families:	Druggable Genome, Protein Kinase, Transmembrane



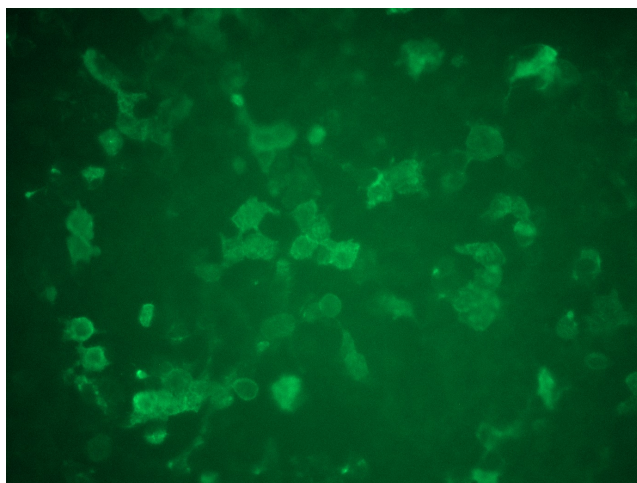
[View online »](#)

**Protein Pathways:** Adherens junction, Colorectal cancer, Endocytosis, Focal adhesion, Glioma, Long-term depression, Melanoma, Oocyte meiosis, Pathways in cancer, Progesterone-mediated oocyte maturation, Prostate cancer

**MW:** 154.79 kDa

**Gene Summary:** This receptor binds insulin-like growth factor with a high affinity. It has tyrosine kinase activity. The insulin-like growth factor I receptor plays a critical role in transformation events. Cleavage of the precursor generates alpha and beta subunits. It is highly overexpressed in most malignant tissues where it functions as an anti-apoptotic agent by enhancing cell survival. Alternatively spliced transcript variants encoding distinct isoforms have been found for this gene. [provided by RefSeq, May 2014]

### Product images:



[RC214928L3] was used to prepare Lentiviral particles using [TR30037] packaging kit. HEK293T cells were transduced with RC214928L3V particle to overexpress human IGF1R-Myc-DDK fusion protein.