

Product datasheet for **RC214464**

IL4R (NM_000418) Human Tagged ORF Clone

Product data:

Product Type:	Expression Plasmids
Product Name:	IL4R (NM_000418) Human Tagged ORF Clone
Tag:	Myc-DDK
Symbol:	IL4R
Synonyms:	CD124; IL-4RA; IL4RA
Mammalian Cell Selection:	Neomycin
Vector:	pCMV6-Entry (PS100001)
E. coli Selection:	Kanamycin (25 ug/mL)



[View online »](#)

ORF Nucleotide Sequence:

>RC214464 representing NM_000418.

Blue=ORF Red=Cloning site Green=Tag(s)

```

GCTCGTTTAGTGAACCGTCAGAATTTTGTAAACGACTCACTATAGGGCGGCCGGGAATTCGTGACTG
GATCCGGTACCGAGGAGATCTGCCGCCACGATCGCC
ATGGGGTGGCTTTGCTCTGGGCTCCTGTTCCCTGTGAGCTGCCTGGTCTGCTGCAGGTGGCAAGCTCT
GGGAACATGAAGTCTTGCAGGAGCCACCTGCGTCTCCGACTACATGAGCATCTCTACTTGCAGTGG
AAGATGAATGGTCCACCAATTGCAGCACCGAGCTCCGCCTGTTGTACCAGCTGGTTTTTCTGCTCTCC
GAAGCCACACGTGTATCCCTGAGAACAACGGAGCGCGGGGTGCGTGTGCCACCTGCTCATGGATGAC
GTGGTCAGTGGGATAACTATACACTGGACCTGTGGGCTGGGCAGCAGCTGCTGTGGAAGGGCTCCTTC
AAGCCCAGCGAGCATGTGAAACCCAGGGCCCCAGGAACTGACAGTTACACCAATGTCTCCGACACT
CTGCTGCTGACCTGGAGCAACCCGTATCCCCCTGACAATTACCTGTATAATCATCTCACCTATGCAGTC
AACATTTGGAGTAAAACGACCCGGCAGATTTCAGAATCTATAACGTGACCTACCTAGAACCCTCCCTC
CGCATCGCAGCCAGCACCTGAAGTCTGGGATTTCTACAGGGCACGGGTGAGGGCTGGGCTCAGTGC
TATAACACCACCTGGAGTGAAGTGGAGCCCCAGCACCAAGTGGCACAACCTCTACAGGGAGCCCTCGAG
CAGCACCTCCTGCTGGGGTCTCAGCGTTTCTGCATTGTATCCTGGCCGCTGCCTGTTGTGCTATGTC
AGCATACCAAGATTAAGAAAGAATGGTGGATCAGATTCCTCAACCCAGCCCGCAGCCGCTCGTGGCT
ATAATAATCCAGGATGCTCAGGGGTACAGTGGGAGAAGCGGTCCCGAGGCCAGGAACAGCCAAGTGC
CCACACTGGAAGAATTGTCTTACCAAGCTTGGCCCTGTTTTCTGGAGCACAACTGAAAAGGGATGAA
GATCCTCACAAGGCTGCCAAAGAGATGCCTTCCAGGGCTCTGGAAAATCAGCATGGTGGCCAGTGGAG
ATCAGCAAAGACAGTCTCTGGCCAGAGAGCATCAGCGTGGTGGATGTGTGGAGTGTGTGGAGTGGTGG
GTGGAGTGTGAGGAGGAGGAGGTAGAGGAAGAAAAGGGAGCTTCTGTGCATCGCTGAGAGCAGC
AGGGATGACTTCCAGGAGGGAAGGGAGGGCATTGTGGCCGGCTAACAGAGAGCCCTGTTCCCTGGACTG
CTCGGAGAGGAGAATGGGGCTTTTGGCAGCAGGACATGGGGGAGTGCATGCCTTCTCCACCTTCGGGA
AGTACGAGTGTGCATGCCCTGGGATGAGTTCCTCAAGTGCAGGGCCCAAGGAGGCACCTCCCTGGGGC
AAGGAGCAGCCTCTCCACCTGGAGCCAAGTCTCCTGCCAGCCGACCCAGAGTCCAGACAACTGACT
TGCACAGAGACGCCCTCGTGCATCGCAGGCAACCTGCTTACCGCAGCTTACGCAACTCCCTGAGCCAG
TCACCGTGTCCCAGAGAGCTGGGTCCAGACCCACTGCTGGCCAGACACCTGGAGGAAGTAGAACCCGAG
ATGCCCTGTGTCCCCAGCTCTCTGAGCCAACCACTGTGCCCAACCTGAGCCAGAAACCTGGGAGCAG
ATCCTCCGCCGAAATGTCTCCAGCATGGGGCAGCTGCAGCCCCGTCTCGGCCCCACCAGTGGCTAT
CAGGAGTTTGTACATGCGGTGGAGCAGGTGGCACCCAGGCCAGTGGGTGGTGGGCTTGGTCCCCCA
GGAGAGGCTGTTACAAGCCTTCTCAAGCCTGCTTGGCAGCAGTGTGTGTCCCAGAGAAATGTGGG
TTTGGGGTAGCAGTGGGGAAGAGGGGTATAAGCCTTTCCTCAAGACCTCATTCTGGCTGCCCTGGGGAC
CCTGCCCCAGTCCCTGTCCCCTTGTACCTTTGGACTGGACAGGGAGCCACCTCGCAGTCCGAGAGC
TCACATCTCCCAAGCAGCTCCCCAGAGCACCTGGGTCTGGAGCCGGGGGAAAAGGTAGAGGACATGCCA
AAGCCCCACTTCCCAGGAGCAGGCCACAGACCCCTTGTGGACAGCCTGGGCAGTGGCATTGTCTAC
TCAGCCCTTACCTGCCACCTGTGCGGCCACCTGAAACAGTGTGCATGGCCAGGAGGATGGTGGCCAGACC
CCTGTCTGGCCAGTCTTGTGCTGGCTGCTGCTGTGGAGACAGTCTCGCCCCCTACAACCCCTG
AGGGCCCGACCCCTCTCCAGTGGGGTTCCTACTGGAGGCCAGTCTGTGTCCGGCCTCCCTGGCACCC
TCGGGCATCTCAGAGAAGAGTAAATCCTCATCATCTTCCATCCTGCCCTGGCAATGCTCAGAGCTCA
AGCCAGACCCCAAAATCGTGAACCTTGTCTCCGTGGGACCCACATACATGAGGGTCTCT
ACGCGTACGCGGCCGCTCGAGCAGAACTCATCTCAGAAGAGGATCTGGCAGCAATGATATCCTGGAT
TACAAGGATGACGACGATAAGGTTAAACGGCCGGC
    
```

Protein Sequence: >Peptide sequence encoded by RC214464
Blue=ORF Red=Cloning site Green=Tag(s)

MGWLCGSLLPVVSCLVLLQVASSGNMKVLQEPTCVSDYMSISTCEWKMGPTNCSTELRLLYQLVFLLS
EAHTCIPENGGAGCVCHLLMDDVVSADNYTLDLWAGQQLLWKGSEHKPSEHVKPRAPGNLTVHTNVS
DTLLLTSWNPYPDPNYLYNHLTYAVNIWSENDPADFRIYNTYLEPSLRIAASTLKSGISYRARVRAWAQC
YNTTWSEWSPSTKWHNSYREPFEQHLLLVSVSCIVILAVCLLCYVSITKIKKEWWDQIPNPARSRLVA
IIIQDAQGSQWEKRSRQEPKCPHWKNCLTKLLPCFLEHNMKRDEDPHKAAKEMPFQSGKSAWCPVE
ISKTVLWPESISVVRVELFEAPVECEEEEEVEEEKGSFCASPESSRDDFQEGREGIVARLTESTLFDL
LGEENGFCQQDMGESCLLPPSGSTSAHMPWDEFPSAGPKEAPPWKEQPLHLEPSPPASPTQSPDNLT
CTETPLVIAGNPAYRSFNSLSQSPCPRELGPDPLLARHLEVEPEMPCVPQLSEPTTVPQPEPETWEQ
ILRRNVLQHAAAAPVSAPTSQYQEFVHAVEQGGTQASAVVGLGPPGEAGYKAFSSLLASSAVSPEKCG
FGASSGEEGYKPFQDLIPGCPGDPAPVPVPLFTFGLDREPPRSPQSSHLPSSSPEHLGLEPGEKVEDMP
KPPLPQEQAATDPLVDSLGSIVYSALTCHLCGHLKQCHGQEDGGQTPVMASPCCGCCGDRSSPTTPL
RAPDPSPGGVPLEASLCPASLAPSGISEKSKSSSFHPAPGNAQSSSQTPKIVNFVSVGPTYMRVS
TRTRPLEQKLISEEDLAANDILDYKDDDDKV

Chromatograms: https://cdn.origene.com/chromatograms/mk6237_f04.zip

Restriction Sites: Sgfl-Mlul

Cloning Scheme:

Cloning sites used for ORF Shuttling:



* The last codon before the Stop codon of the ORF

ACCN: NM_000418
ORF Size: 2475 bp

OTI Disclaimer: Due to the inherent nature of this plasmid, standard methods to replicate additional amounts of DNA in E. coli are highly likely to result in mutations and/or rearrangements. Therefore, OriGene does not guarantee the capability to replicate this plasmid DNA. Additional amounts of DNA can be purchased from OriGene with batch-specific, full-sequence verification at a reduced cost. Please contact our customer care team at custsupport@origene.com or by calling 301.340.3188 option 3 for pricing and delivery.

The molecular sequence of this clone aligns with the gene accession number as a point of reference only. However, individual transcript sequences of the same gene can differ through naturally occurring variations (e.g. polymorphisms), each with its own valid existence. This clone is substantially in agreement with the reference, but a complete review of all prevailing variants is recommended prior to use. [More info](#)

OTI Annotation: This clone was engineered to express the complete ORF with an expression tag. Expression varies depending on the nature of the gene.

Components: The ORF clone is ion-exchange column purified and shipped in a 2D barcoded Matrix tube containing 10ug of transfection-ready, dried plasmid DNA (reconstitute with 100 ul of water).

Reconstitution Method:

1. Centrifuge at 5,000xg for 5min.
2. Carefully open the tube and add 100ul of sterile water to dissolve the DNA.
3. Close the tube and incubate for 10 minutes at room temperature.
4. Briefly vortex the tube and then do a quick spin (less than 5000xg) to concentrate the liquid at the bottom.
5. Store the suspended plasmid at -20°C. The DNA is stable for at least one year from date of shipping when stored at -20°C.

RefSeq: [NM_000418.4](#)

RefSeq Size: 3678 bp

RefSeq ORF: 2478 bp

Locus ID: 3566

UniProt ID: [P24394](#)

Cytogenetics: 16p12.1

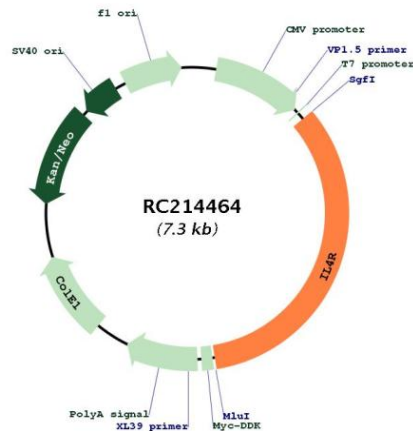
Protein Families: Druggable Genome, Secreted Protein

Protein Pathways: Cytokine-cytokine receptor interaction, Hematopoietic cell lineage, Jak-STAT signaling pathway

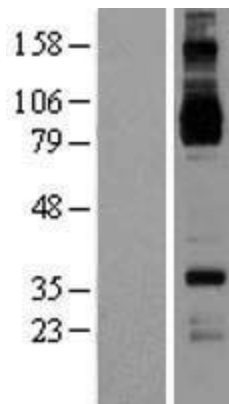
MW: 89.7 kDa

Gene Summary:

This gene encodes the alpha chain of the interleukin-4 receptor, a type I transmembrane protein that can bind interleukin 4 and interleukin 13 to regulate IgE production. The encoded protein also can bind interleukin 4 to promote differentiation of Th2 cells. A soluble form of the encoded protein can be produced by proteolysis of the membrane-bound protein, and this soluble form can inhibit IL4-mediated cell proliferation and IL5 upregulation by T-cells. Allelic variations in this gene have been associated with atopy, a condition that can manifest itself as allergic rhinitis, sinusitis, asthma, or eczema. Polymorphisms in this gene are also associated with resistance to human immunodeficiency virus type-1 infection. Alternate splicing results in multiple transcript variants. [provided by RefSeq, Apr 2012]

Product images:


Circular map for RC214464



Western blot validation of overexpression lysate (Cat# [LY424733]) using anti-DDK antibody (Cat# [TA50011-100]). Left: Cell lysates from untransfected HEK293T cells; Right: Cell lysates from HEK293T cells transfected with RC214464 using transfection reagent MegaTran 2.0 (Cat# [TT210002]).