

Product datasheet for RC214340

PPP2R4 (PTPA) (NM_178001) Human Tagged ORF Clone

Product data:

Product Type:	Expression Plasmids
Product Name:	PPP2R4 (PTPA) (NM_178001) Human Tagged ORF Clone
Tag:	Myc-DDK
Symbol:	PPP2R4
Synonyms:	PP2A; PPP2R4; PR53
Mammalian Cell Selection:	Neomycin
Vector:	pCMV6-Entry (PS100001)
E. coli Selection:	Kanamycin (25 ug/mL)
ORF Nucleotide Sequence:	>RC214340 representing NM_178001 Red=Cloning site Blue=ORF Green=Tags(s)

TTTTGTAATACGACTCACTATAGGGCGGCCGGAATTCGTCGACTGGATCCGGTACCGAGGAGATCTGCC
GCC**CGATCGCC**

ATGGCTGAGGGCGAGCGGCAGCCGCCAGATTCTTCAGAGGAGGCCCTCCAGCCACTCAGAACTTCA
TCATTCAAAAAGGAGATCCACACAGTTCAGACATGGGCAAATGGAAGCGTTCTCAGGCATACGCTGA
CTACATCGGATTCATCCTTACCCTCAACGAAGGTGTGAAGGGGAAGAAGCTGACCTTCGAGTACAGAGTC
TCCGAGATGTGGAATGAGGTTTCATGAGGAAAAGGAGCAGGCTGCAAAGCAGAGTGTCTCGCGATGAAT
GCATACCATTACCCCGCCGGGCACTGTGCACCTTCGGAGGCCATTGAGAACTAGTCGCTCTTCTCAA
CAGCTGGACAGGTGGATTGATGAGACTCTCCAGTGGACCAGCCCTCTCGGTTTGGGAATAAGGCATAC
AGGACCTGGTATGCCAACTTGATGAGGAAGCAGAAAACCTGGTGGCCACAGTGGTCCCTACCCATCTGG
CAGCTGCTGTGCCTGAGGTGGCTGTTTACCTAAAGGAGTCAGTGGGGAACCTCCACGCGCATTGACTACGG
CACAGGGCATGAGGCAGCCTTCGCTGCTTCTCTGCTGTCTCTGCAAGATTGGGGTGTCCGGGTGGAT
GACCAATAGCTATTGTCTTCAAGGTGTCAATCGGTACCTTGAGGTTATGCGGAACTCCAGAAAAACAT
ACAGGATGGAGCCAGCCGCGCAGCCAGGGAGTGTGGGTCTGGATGACTTCCAGTTTCTGCCCTTCATCTG
GGCAGTTCGAGCTGATAGACCACCCATACCTGGAGCCAGACACTTTGTGGATGAGAAGGCCGTGAAT
GAGAACCACAAGGACTACATGTTCTGGAGTGTATCCTGTTTATTACCGAGATGAAGACTGGCCATTTG
CAGAGCACTCCAACAGCTGTGGAACATCAGCGCCGTCCTTCTCGTCCAAAGTGAACCGGGTCTCAT
CCGCATGTATAAGGCCGAGTGCCTGGAGAAGTTCCTGTGATCCAGCACTTCAAGTTCGGGAGCCTGCTG
CCCATCCATCCTGTACGTCGGGC

ACGCGTACGCGGCCGCTCGAGCAGAAAACATCTCAGAAGAGGATCTGGCAGCAAATGATATCCTGGATT
ACAAGGATGACGACGATAAGGTTTAA



[View online »](#)

Protein Sequence: >RC214340 representing NM_178001
Red=Cloning site Green=Tags(s)

MAEGERQPPDSSSEEAPPATQNFIIIPKKEIHTVPDMGKWKRSQAYADYIGFILTLNEGVKGKCLTFEYRV
 SEMWNEVHEEKEQAAKQSVSCDECIPLPRAGHCAPSEAIKLVALLNLTDRWIDETPPVDQPSRFGNKAY
 RTWYAKLDDEEAENLVATVVPHTLAAAVPEVAVYLKESVGNSTRIDYGTGHEAAFAFLCCLCKIGVLRVD
 DQIAIVFKVFNRYLEVMRKLQKTYRMEPAGSQGVWGLDDFQFLPFIWGSSQLIDHPYLEPRHFVDEKAVN
 ENHKDYMFLCEILFITEMKTGPF AEHSNQLWNISAVPSWSKVNQGLIRMYKAECLEKFPVIQHFKFGSLL
 PIHPVTSG

TRTRPLEQKLISEEDLAANDILDYKDDDDKV

Chromatograms: https://cdn.origene.com/chromatograms/mk8054_c01.zip

Restriction Sites: SgfI-MluI

Cloning Scheme:



ACCN: NM_178001

ORF Size: 1074 bp

OTI Disclaimer: The molecular sequence of this clone aligns with the gene accession number as a point of reference only. However, individual transcript sequences of the same gene can differ through naturally occurring variations (e.g. polymorphisms), each with its own valid existence. This clone is substantially in agreement with the reference, but a complete review of all prevailing variants is recommended prior to use. [More info](#)

OTI Annotation: This clone was engineered to express the complete ORF with an expression tag. Expression varies depending on the nature of the gene.

Components: The ORF clone is ion-exchange column purified and shipped in a 2D barcoded Matrix tube containing 10ug of transfection-ready, dried plasmid DNA (reconstitute with 100 ul of water).

Reconstitution Method:

1. Centrifuge at 5,000xg for 5min.
2. Carefully open the tube and add 100ul of sterile water to dissolve the DNA.
3. Close the tube and incubate for 10 minutes at room temperature.
4. Briefly vortex the tube and then do a quick spin (less than 5000xg) to concentrate the liquid at the bottom.
5. Store the suspended plasmid at -20°C. The DNA is stable for at least one year from date of shipping when stored at -20°C.

RefSeq: [NM_178001.2](#), [NP_821068.1](#)

RefSeq Size: 2841 bp

RefSeq ORF: 1077 bp

Locus ID: 5524

UniProt ID: [Q15257](#)

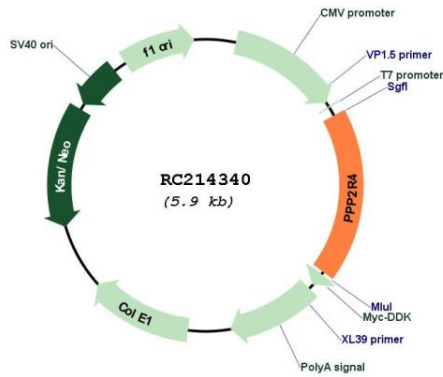
Cytogenetics: 9q34.11

Protein Families: Druggable Genome, Phosphatase

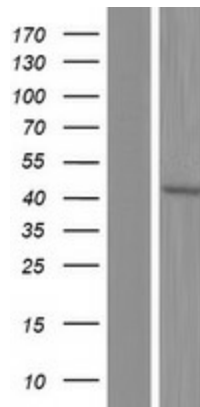
MW: 40.5 kDa

Gene Summary: Protein phosphatase 2A is one of the four major Ser/Thr phosphatases and is implicated in the negative control of cell growth and division. Protein phosphatase 2A holoenzymes are heterotrimeric proteins composed of a structural subunit A, a catalytic subunit C, and a regulatory subunit B. The regulatory subunit is encoded by a diverse set of genes that have been grouped into the B/PR55, B'/PR61, and B''/PR72 families. These different regulatory subunits confer distinct enzymatic specificities and intracellular localizations to the holoenzyme. The product of this gene belongs to the B' family. This gene encodes a specific phosphotyrosyl phosphatase activator of the dimeric form of protein phosphatase 2A. Alternative splicing results in multiple transcript variants encoding different isoforms. [provided by RefSeq, Jul 2008]

Product images:



Circular map for RC214340



Western blot validation of overexpression lysate (Cat# [LY406042]) using anti-DDK antibody (Cat# [TA50011-100]). Left: Cell lysates from untransfected HEK293T cells; Right: Cell lysates from HEK293T cells transfected with RC214340 using transfection reagent MegaTran 2.0 (Cat# [TT210002]).