

Product datasheet for **RC214298**

TM6SF2 (NM_001001524) Human Tagged ORF Clone

Product data:

Product Type:	Expression Plasmids
Product Name:	TM6SF2 (NM_001001524) Human Tagged ORF Clone
Tag:	Myc-DDK
Symbol:	TM6SF2
Mammalian Cell Selection:	Neomycin
Vector:	pCMV6-Entry (PS100001)
E. coli Selection:	Kanamycin (25 ug/mL)
ORF Nucleotide Sequence:	>RC214298 representing NM_001001524 Red=Cloning site Blue=ORF Green=Tags(s)

TTTTGTAATACGACTCACTATAGGGCGGCCGGAATTCGTCGACTGGATCCGGTACCGAGGAGATCTGCC
GCC**CGATCGCC**

ATGGACATCCCGCCGCTGGCCGGCAAGATCGCGGCGCTGTCGCTGAGCGCCCTCCCGGTGTCCTACGCGC
TCAACCACGTCTCGGCGCTCTCGACCCCTGTGGGTGGCATTGATGAGCGCCCTAATCCTGGGTCTGCT
TTTCGTGGCGGTCTACAGCTTGTCCCATGGCGAGGTCTCCTATGACCCACTCTATGCTGTCTTCGCTGTC
TTCGCCTTCACCTCGGTTGTGGACCTCATCATCGCTCTTCAGGAAGACAGCTATGTTGGTGGGCTTCATGG
AGTTCTACACCAAGGAGGAGAGCCATACCTGGCAGCAGCGCAGGAGTTCATCTGCTACTGGGATGG
CACTGTTCACTACCTCCTTACCTGGCCATGGCCGGCGCCATCTGCAGAAGGAAGAGATACCGGAATTTT
GGACTCTACTGGCTGGGTTCTTCGCCATGAGCATCCTGGTGTTCTTACAGAAACATTCTTGCAAAT
ACAGCTCCGAGATCAGGCCTGCCTTCTCCTCACCATCCCCTACCTGCTGGTGCCATGCTGGGCTGGCAT
GAAGGTCTTCAGCCAGCCCCGGGCGCTAACCCGCTGCACCGCAAACATGGTGCAAGAGGAACAAAGAAA
GGACTCCTGCAGCGTCCGGCTGACCTGGCCCTTGCATATATCTCATCCTTGCTGGCTTCTTCACTCTGT
TCCGGGGCCTGGTGGTGTGATTGCCACAGATGCCTGCTTTGTCTATATCTACCAGTATGAGCCATA
CCTGCGGGACCTGTGGCTACCCTAAGGTGCAGATGCTGATGTACATGTTTTATGCTCCTGCCTTCTGCG
GGCCTGGCTGCCTATGCTCTCACCTTCCCTGGTTGCTCCTGGCTCCAGACTGGGCTTGGTGTTTGCTG
GAGGCATCGGCCAGGCACAGTTCTCGCACATGGGGGCTTCCATGCACCTGCGCACACCTTCACCTACCG
TGTGCCTGAGGACACCTGGGGCTGCTTCTCGTGTGCAATCTGCTGTATGCGCTGGGCCCCACCTGCTG
GCCTACGTTGCCTTCAGTGGCCCGCATTCTTCCACCAGCCACCCTCCGACCCCTAGCCCTCCACA
AGAAGCAGCAT

AG**CGGACCG**ACGCGTACGCGCCGCTCGAGCAGAACTCATCTCAGAAGAGGATCTGGCAGCAAATGATATCC
TGGATTACAAGGATGACGACGATAAGGTTTAA



[View online »](#)

Protein Sequence: >RC214298 representing NM_001001524
Red=Cloning site Green=Tags(s)

MDIPPLAGKIAALSLSALPVSYALNHVSALSHPLWVALMSALILGLLFVAVVYSLSHGEVSYDPLYAVFAV
 FAFTSVVDLIIALQEDSYVVGFMFYTKEGEPYLRTAHGVFICYWDGTVHYLLYLAMAGAIARRKRYRNF
 GLYWLGSFAMSILVFLTGNILGKYSSEIRPAFFLTIPYLLVPCWAGMKVFSQPRALTRCTANMVQEEQRK
 GLLQRPADLALVIYLILAGFFTLFRGLVVLDCPTDACFVYIYQYEPYLRDPVAYPKVQMLMYMFYVLPFC
 GLAAYALTFPGCSWLPDWALVFAGGIGQAQF SHMGASMHRLRTPFTYRVPEDTWGCFVFCNLLYALGPHLL
 AYRCLQWPAFFHQPPSDPLALHKKQH

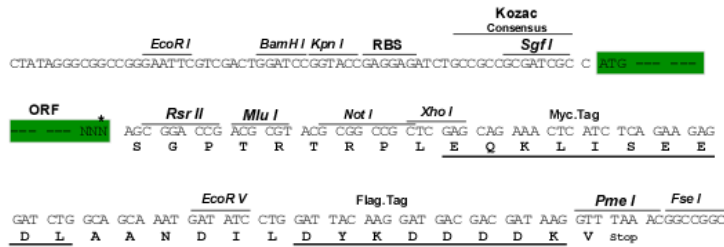
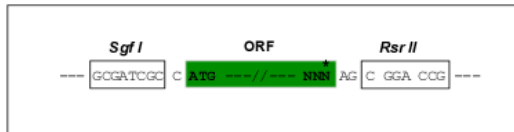
SGPTRTRRLEQKLI SEEDLAANDILDYKDDDDKV

Chromatograms: https://cdn.origene.com/chromatograms/ja1145_d05.zip

Restriction Sites: SgfI-RsrII

Cloning Scheme:

Cloning sites used for ORF Shuttling:



* The last codon before the Stop codon of the ORF

ACCN: NM_001001524

ORF Size: 1131 bp

OTI Disclaimer: The molecular sequence of this clone aligns with the gene accession number as a point of reference only. However, individual transcript sequences of the same gene can differ through naturally occurring variations (e.g. polymorphisms), each with its own valid existence. This clone is substantially in agreement with the reference, but a complete review of all prevailing variants is recommended prior to use. [More info](#)

OTI Annotation: This clone was engineered to express the complete ORF with an expression tag. Expression varies depending on the nature of the gene.

Components: The ORF clone is ion-exchange column purified and shipped in a 2D barcoded Matrix tube containing 10ug of transfection-ready, dried plasmid DNA (reconstitute with 100 ul of water).

Reconstitution Method:

1. Centrifuge at 5,000xg for 5min.
2. Carefully open the tube and add 100ul of sterile water to dissolve the DNA.
3. Close the tube and incubate for 10 minutes at room temperature.
4. Briefly vortex the tube and then do a quick spin (less than 5000xg) to concentrate the liquid at the bottom.
5. Store the suspended plasmid at -20°C. The DNA is stable for at least one year from date of shipping when stored at -20°C.

RefSeq: [NM_001001524.3](#)

RefSeq Size: 1483 bp

RefSeq ORF: 1134 bp

Locus ID: 53345

UniProt ID: [Q9BZW4](#)

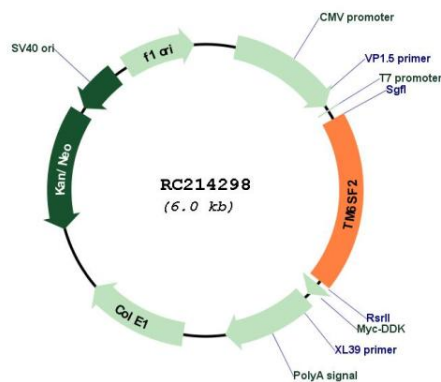
Cytogenetics: 19p13.11

Protein Families: Transmembrane

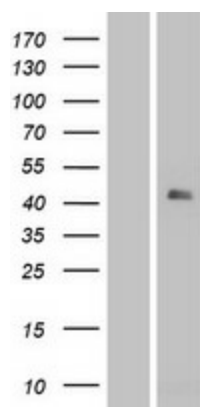
MW: 42.4 kDa

Gene Summary: Regulator of liver fat metabolism influencing triglyceride secretion and hepatic lipid droplet content (PubMed:24531328, PubMed:24927523). May function as sterol isomerase (PubMed:25566323).[UniProtKB/Swiss-Prot Function]

Product images:



Circular map for RC214298



Western blot validation of overexpression lysate (Cat# [LY424371]) using anti-DDK antibody (Cat# [TA50011-100]). Left: Cell lysates from untransfected HEK293T cells; Right: Cell lysates from HEK293T cells transfected with RC214298 using transfection reagent MegaTran 2.0 (Cat# [TT210002]).